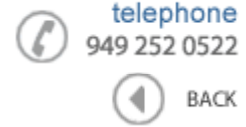




Data Sheet



Product Category: RF SAW Filter

Part Number	Package	Application	Last Modified
803-RF462.5M-B	3.8 x 3.8 SMD	CDMA450	Jan. 01, 2007

TYPE :
CDMA450, RF-Rx SAW Filter



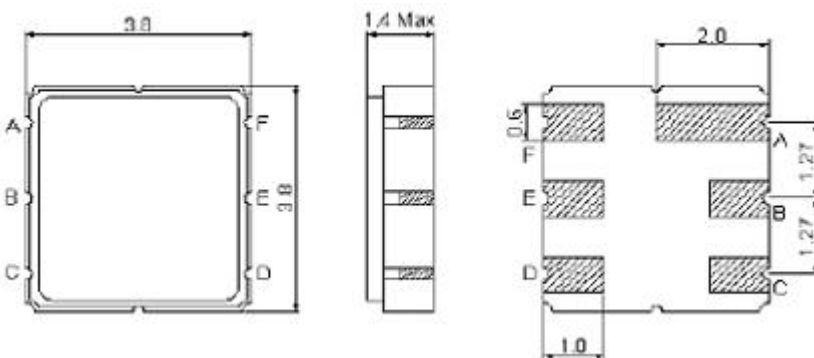
PART NUMBER :
803-RF462.5M-B

OPERATING CONDITIONS / ELECTRICAL CHARACTERISTICS

PARAMETERS	Condition	Minimum	Typical	Maximum	Units
Center Frequency (Fo)	-	-	462.5	-	MHz
Maximum Insertion Loss	460.0~ 464.8 MHz	-	2.8	4.8	dB
Stop Band Attenuation:	0.3~ 450.0 MHz	40	45	-	dB
	450.0~ 455.0 MHz	35	46	-	
	485.0~ 505.0MHz	40	50	-	
	505.0~ 1200.0 MHz	30	41	-	
	1200.0~ 2000.0 MHz	20	32	-	
Source Impedance (single ended)*	-	-	50	-	ohm
Load Impedance (single ended)*	-	-	50	-	ohm
VSWR	460.0~ 464.8 MHz	-	1.9	2.4	-
Maximum Input Power	-	-	-	27	dBm
Operating Temperature	-	-30	-	+80	°C

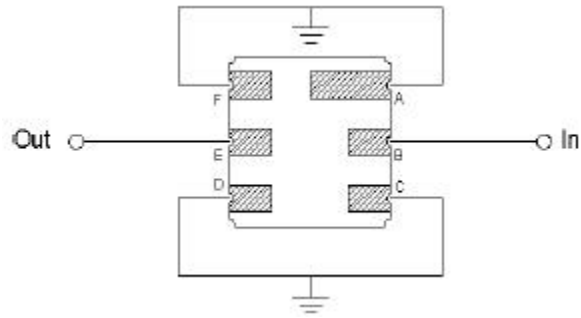
* No Matching Network

PACKAGE OUTLINE (mm)



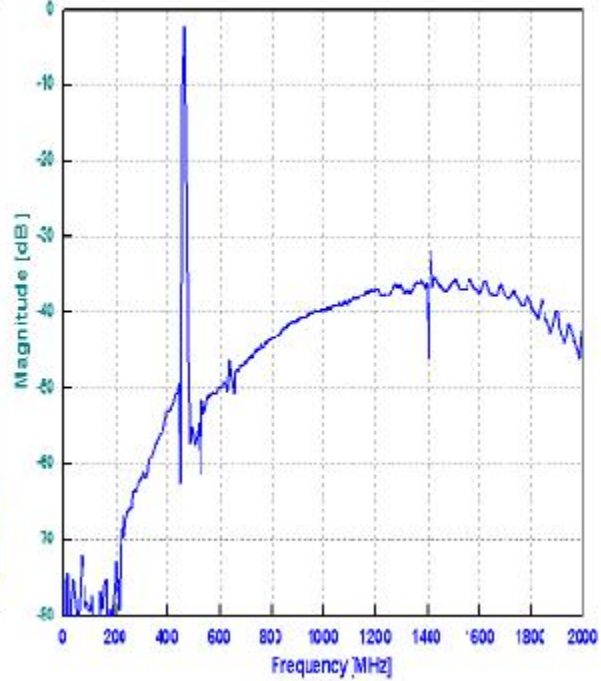
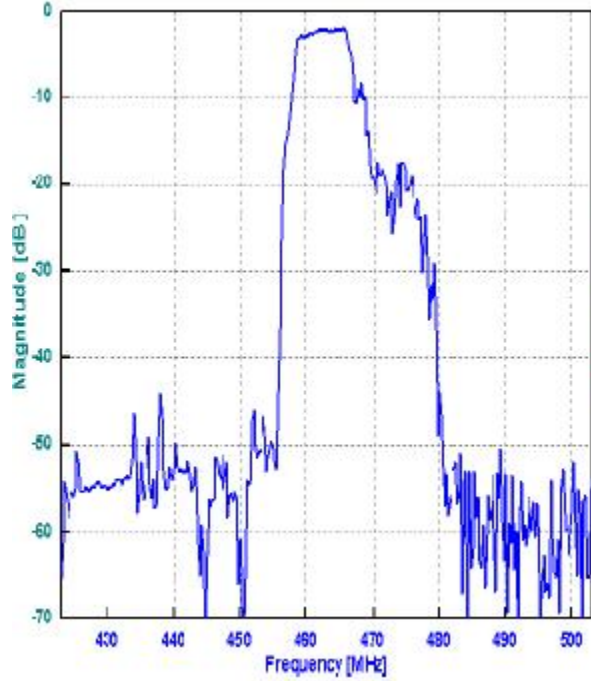
PIN LAYOUT	
A	Ground
B	In
C	Ground
D	Ground
E	Out
F	Ground

TEST FIXTURE

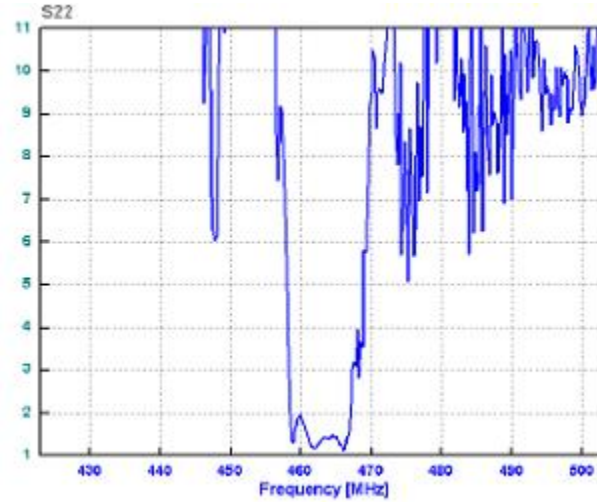
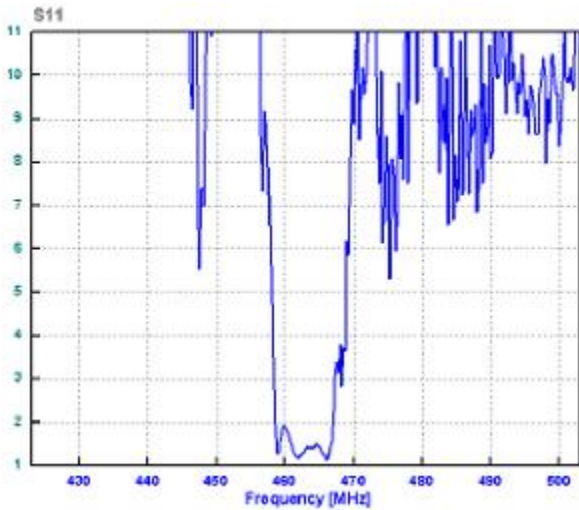


Source/ Load Impedance = 50 ohms

FREQUENCY RESPONSE

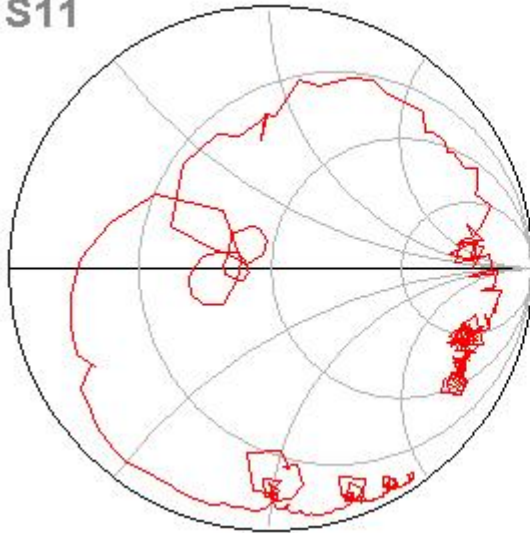


VSWR

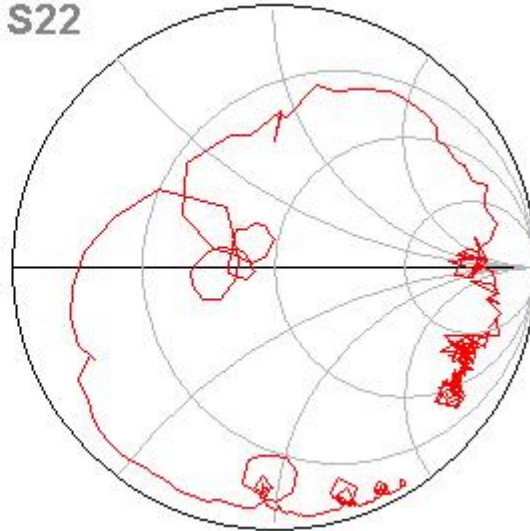


SMITH CHART

S11



S22



Oscilent Corporation - CALL **949.252.0522**

18195 East McDurrnott Street . Building D . Irvine . CA 92614 . USA
Fax: 949.252.0599 . E-Mail: Sales@Oscilent.com

Part No.: 803-RF462.5M-B