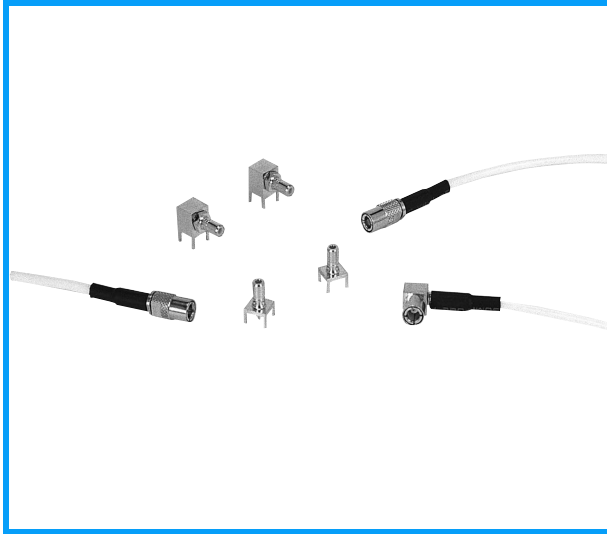


SSMB Type Connectors



- SSMB series are super mini-size low profile, push-on type coaxial cable connectors produced corresponding to minimization of communication equipment, and based on IEC-Pub.169-19 Standard.
- When fitted, the height from print base is less than 6mm(in combination of SP and LR) or less than 10mm(in combination of LP and SR).

CONFORMING STANDARD

IEC-Pub. 169-19

SPECIFICATION

Characteristic Impedance	50 Ω
Dielectric withstanding voltage	500V AC (rms) for 1 minute
Insulation resistance	1000M Ω min. at 250V DC
Contact resistance	7.5m Ω max.
VSWR	1.3max. at DC~2GHz

Specifications depends on each connector although these are basic specifications.

MATERIAL/FINISH

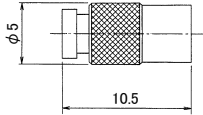
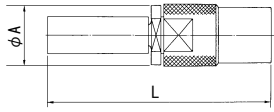
Shell (Body)	Copper alloy/Nickel plating
Contact (male)	Copper alloy/Gold plating
Contact (female)	Copper alloy/Gold plating
Insulators	PTFE

Please ask us for the cable assemblies to assure its performance.

SSMB Series

Unit : mm

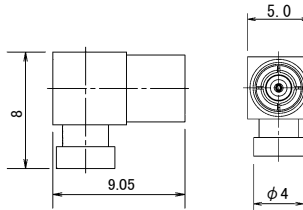
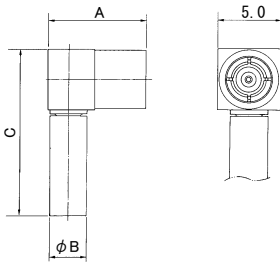
Plug



P/N	ϕA	L	Applicable Cable	Finish		Hand Crimp Tool P/N
				Shell	Contact	
SSMB-SP-0.8DV-CR	5.0	13.9	0.8D-QEV	Au	Au	CR-H-13510
SSMB-SP-196U	5.0	17.3	RG-196A/U	Au	Au	CR-H-1164
SSMB-SP-1.5QEW	5.5	15.8	1.5D-QEW	Au	Au	CR-H-1133

P/N	Applicable Cable	Finish	
		Shell	Contact
SSMB-SP-85-SO	FCCAUG1	Au	Au

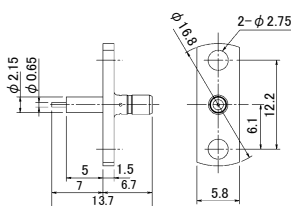
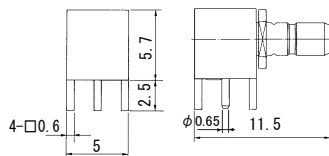
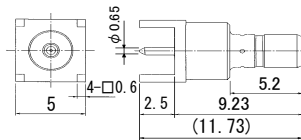
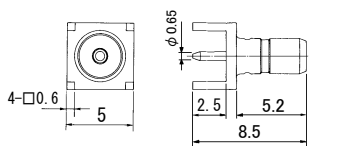
Right Angle Plug



P/N	A	B	C	Applicable Cable	Finish		Hand Crimp Tool P/N
					Shell	Contact	
SSMB-LP-0.8DQEV	7.73	3.0	13.5	0.8D-QEV	Au	Au	CR-H-1164
SSMB-LP-196U	7.73	3.0	13.5	RG-196A/U	Au	Au	CR-H-1164
SSMB-LP-1.5QEW	8.48	4.5	12.4	1.5D-QEW	Au	Au	CR-H-1133

P/N	Applicable Cable	Finish	
		Shell	Contact
SSMB-LP-85-SO	FCCAUG1	Au	Au

Receptacle



P/N	Finish	
	Shell	Contact
SSMB-SR-PC	Au	Au

P/N	Finish	
	Shell	Contact
SSMB-SR-PC-1	Au	Au

P/N	Finish	
	Shell	Contact
SSMB-LR-PC	Au	Au

P/N	Finish	
	Shell	Contact
SSMB-SR2	Au	Au

Mounting Dimensions Hole

