

# Series D (Standard D-Sub) Dual Port Solder Dip

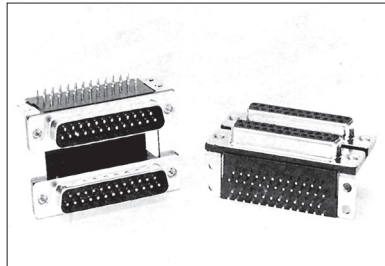
I/O  
Connectors

## Specifications

Insulation Resistance: 5,000MΩ min.  
 Withstanding Voltage: 1,000V AC  
 Contact Resistance: 10mΩ max.  
 Current Rating: 5A  
 Operating Temp. Range: -55°C to +105°C  
 Soldering Temp.: 240°C / 3 sec.

## Materials and Finish

Shell: Steel, Tin plated  
 Insulator: Polyester Resin (glass filled)  
 Fiber reinforced, UL94V-0  
 Contacts: Stamped Copper Alloy  
 Plating: Gold over Nickel



## Part Number (Details)

D DP - 01 \* \* 1

**Series**

**Connector Version:**  
DP = Dual Port

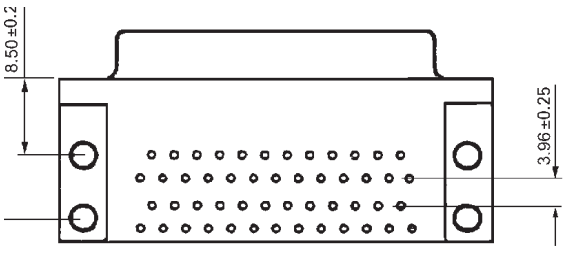
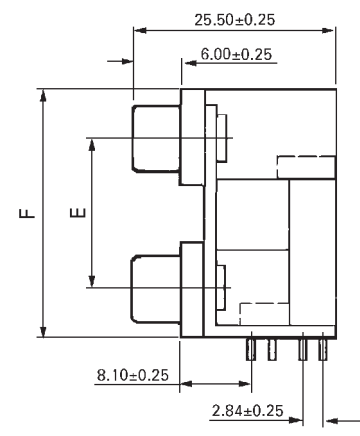
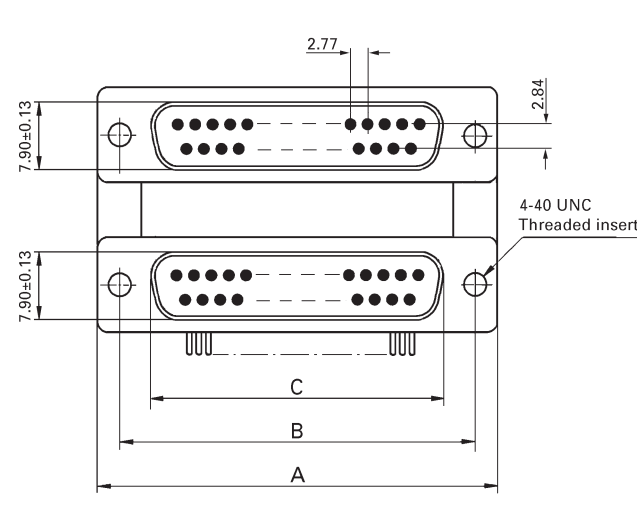
**No. of Contacts (Top/Bottom):**  
 01 = 9 / 9  
 02 = 15 / 15  
 03 = 25 / 25  
 10 = 37 / 37

**Connector Types (Top / Bottom):**  
 1 = Male / Male  
 2 = Male / Female  
 3 = Female / Male  
 4 = Female / Female

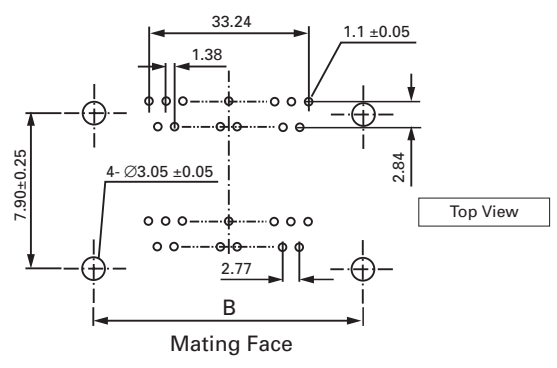
**Vertical Distance between Connectors:**  
 S = 15.88mm, M = 19.05mm, L = 22.86mm

**Assembly:**  
 1 = Snap-in + 4-40 Clinch Nut (Standard)  
 2 = 4-40 Threaded

## Outline Connector Dimensions



## Recommended PCB Layouts



Standard D-Sub

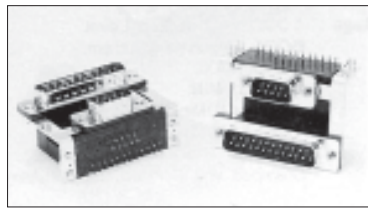
Part Number	No. of Contacts	A	B	C	Vertical Distances	E	F
DDP-01**1	9 / 9	30.81	24.99	16.33	Type S	15.88	28.42
DDP-02**1	15 / 15	39.14	33.32	24.66	Type M	19.05	31.60
DDP-03**1	25 / 25	53.04	47.04	38.38	Type L	22.86	35.41
DDP-10**1	37 / 37	69.32	63.50	54.84			

## Specifications

Insulation Resistance: 5,000MΩ min.  
 Withstanding Voltage: 1,000V AC  
 Contact Resistance: 10mΩ max.  
 Current Rating: 5A  
 Operating Temp. Range: -55°C to +105°C  
 Soldering Temp.: 240°C / 3 sec.

## Materials and Finish

Shell: Steel, Tin plated  
 Insulator: Polyester Resin (glass filled)  
 Fiber reinforced, UL94V-0  
 Contacts: Stamped Copper Alloy  
 Plating: Gold over Nickel



## Part Number (Details)

**D**      **DP - 04**    \*      \*      **1**

**Series**

**Connector Version:**  
 DP = Dual Port

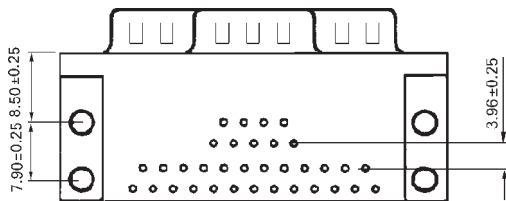
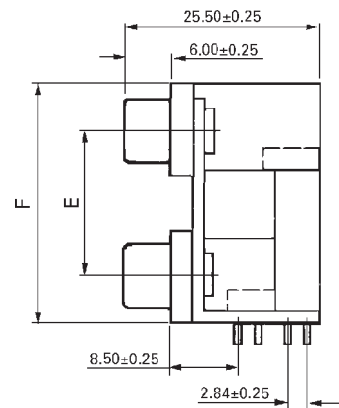
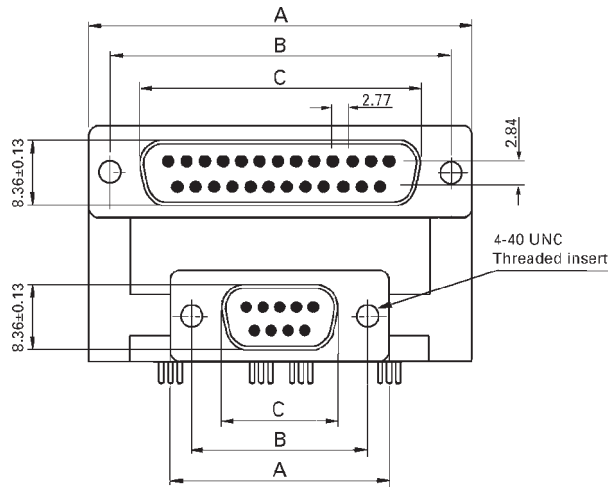
**No. of Contacts (Top / Bottom):**  
 04 = 9 / 15  
 05 = 9 / 25  
 06 = 15 / 9  
 07 = 15 / 25  
 08 = 25 / 9  
 09 = 25 / 15

**Connector Types (Top / Bottom):**  
 1 = Male / Male  
 2 = Male / Female  
 3 = Female / Male  
 4 = Female / Female

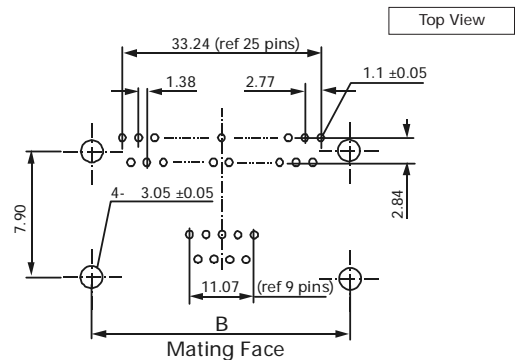
**Vertical Distance between Connectors:**  
 S = 15.88mm, M = 19.05mm, L = 22.86mm

**Assembly:** 1 = With Snap-in 4-40 Clinch Nut (Std.)  
 2 = 4-40 UNC Threaded

## Outline Connector Dimensions



## Recommended PCB Layouts



Part No.	No. of Cont.	A	B	C
DDP-04**1	9 / 15	30.81 / 39.14	24.99 / 33.32	16.33 / 24.66
DDP-05**1	9 / 25	30.81 / 53.04	24.99 / 47.04	16.33 / 38.38
DDP-06**1	15 / 9	39.14 / 30.81	33.32 / 24.99	24.66 / 16.33
DDP-07**1	15 / 25	39.14 / 53.04	33.32 / 47.04	24.66 / 38.38
DDP-08**1	25 / 9	53.04 / 30.81	47.04 / 24.99	38.38 / 16.33
DDP-09**1	25 / 15	53.04 / 39.14	47.04 / 33.32	38.38 / 24.66

Vertical Distances	E	F
Type S	15.88	28.42
Type M	19.05	31.60
Type L	22.86	35.41