



CWM-10-6G SQ DIRECTIONAL COUPLERS

REV: 002, 02/05/01

- SPACE QUALIFIED
- 2.5 - 10 GHz DIRECTIONAL COUPLER



TECHNICAL DESCRIPTION / APPLICATION

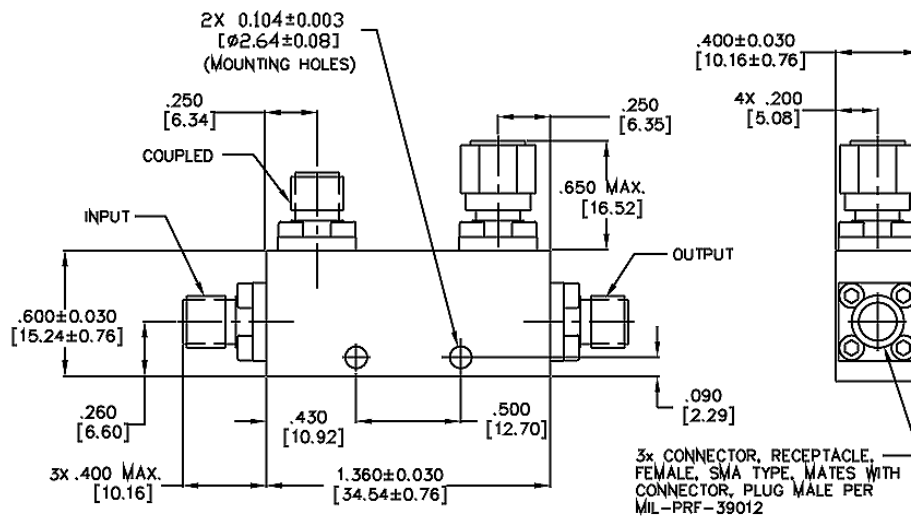
SERIES 05

The CWM-10-6G SQ Directional Coupler covers 2.5 - 10 GHz with a stripline design. This offers low transmission and excellent VSWR. This unit has been designed, manufactured and qualified per Merrimac document CENG-0001, "Standard Design Requirements for Space Qualified Devices".

GENERAL SPECIFICATIONS

MODEL NUMBER	FREQUENCY RANGE GHz	COUPLING dB	INSERTION LOSS dB MAX.	DIRECTIVITY dB MIN.	VSWR MAIN, MAX.
CWM-10-6G SQ	2.5 - 10	10 +/- 1	0.75	16	1.35:1
VSWR COUPLED, MAX.	FREQUENCY SENSITIVITY dB MAX.	CW POWER RATING MAIN LINE	OPERATING TEMPERATURE	WEIGHT	
1.35:1	+/- 0.60	10 WATTS	-55° to +85° C	1.27 oz.	

PACKAGE OUTLINE



NOTES:

1. TOLERANCE ON 3 PLACE DECIMALS ±.020 [.51mm] EXCEPT AS NOTED.
2. MAX. IS LARGEST DIMENSION ALLOWED.
3. DIMENSIONS=INCHES [mm]
4. METRIC EQUIVALENTS ARE TO THE NEAREST .01mm
5. WEIGHT: .98 OZ. [28g] MAX.