

TS15P01G - TS15P07G

Single Phase 15.0 AMPS.
Glass Passivated Bridge Rectifiers

TS-6P

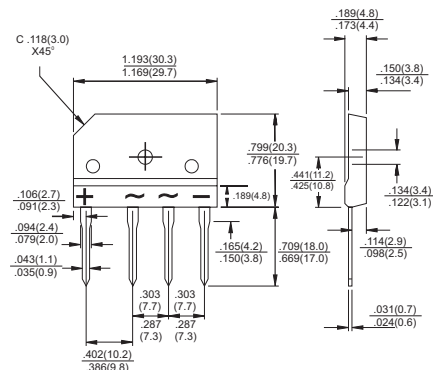


Features

- ✧ UL Recognized File # E-96005
- ✧ Glass passivated junction
- ✧ Ideal for printed circuit board
- ✧ Reliable low cost construction
- ✧ Plastic material has Underwriters Laboratory Flammability Classification 94V-0
- ✧ Surge overload rating to 200 amperes peak
- ✧ High case dielectric strength of 2000 V_{RMS}
- ✧ Isolated voltage from case to lead over 2500 volts

Mechanical Data

- ✧ Case: Molded plastic
- ✧ Terminals: Leads solderable per MIL-STD-750, Method 2026
- ✧ Weight: 0.3 ounce, 8 grams
- ✧ Mounting torque: 8.17 in. lbs. max.



Dimensions in inches and (millimeters)

Maximum Ratings and Electrical Characteristics

Rating at 25 °C ambient temperature unless otherwise specified.

Single phase, half wave, 60 Hz, resistive or inductive load.

For capacitive load, derate current by 20%

Type Number	Symbol	TS15P 01G	TS15P 02G	TS15P 03G	TS15P 04G	TS15P 05G	TS15P 06G	TS15P 07G	Units
Maximum Recurrent Peak Reverse Voltage	V_{RRM}	50	100	200	400	600	800	1000	V
Maximum RMS Voltage	V_{RMS}	35	70	140	280	420	560	700	V
Maximum DC Blocking Voltage	V_{DC}	50	100	200	400	600	800	1000	V
Maximum Average Forward Rectified Current See Fig. 1	$I_{(AV)}$	15.0							A
Peak Forward Surge Current, 8.3 ms Single Half Sine-wave Superimposed on Rated Load (JEDEC method)	I_{FSM}	240							A
Maximum Instantaneous Forward Voltage @ 7.5A @ 15A	V_F	1.0 1.1							V
Maximum DC Reverse Current @ $T_A=25^\circ\text{C}$ at Rated DC Blocking Voltage @ $T_A=125^\circ\text{C}$	I_R	10.0 500							μA μA
Typical Thermal Resistance (Note)	$R_{\theta JC}$	0.8							$^\circ\text{C/W}$
Operating Temperature Range	T_J	-55 to +150							$^\circ\text{C}$
Storage Temperature Range	T_{STG}	-55 to +150							$^\circ\text{C}$

Note: Thermal resistance from Junction to Case with Device Mounted on 300mm x 300mm x 1.6mm Cu Plate Heatsink.

RATINGS AND CHARACTERISTIC CURVES (TS15P01G THRU TS15P07G)

FIG.1- MAXIMUM NON-REPETITIVE FORWARD SURGE CURRENT PER BRIDGE ELEMENT

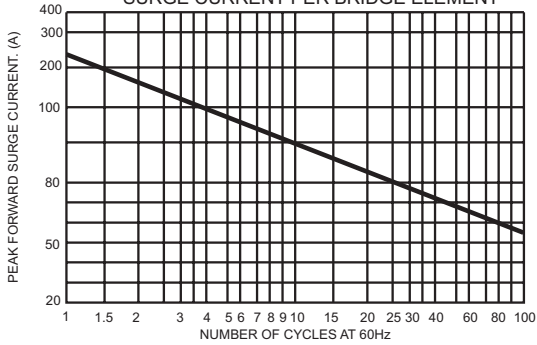


FIG.2- TYPICAL FORWARD CHARACTERISTICS PER BRIDGE ELEMENT

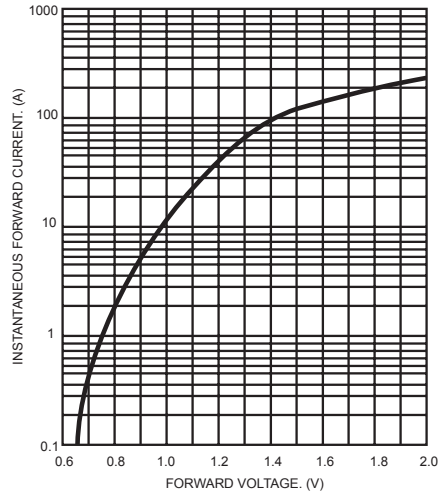


FIG.3- MAXIMUM FORWARD CURRENT DERATING CURVE

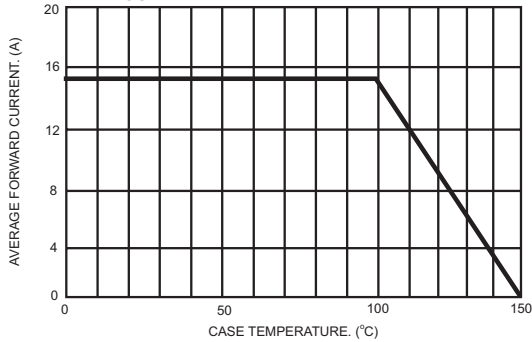


FIG.5- TYPICAL REVERSE CHARACTERISTICS PER BRIDGE ELEMENT

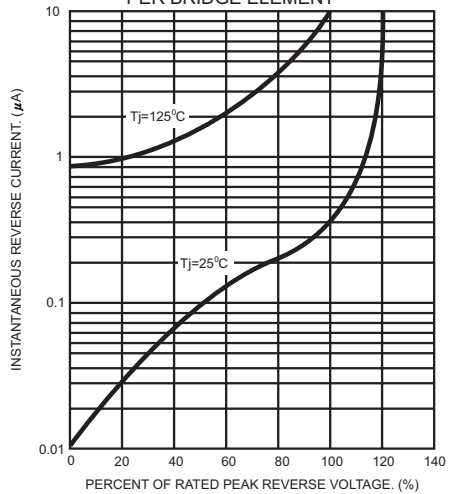


FIG.4- TYPICAL JUNCTION CAPACITANCE

