

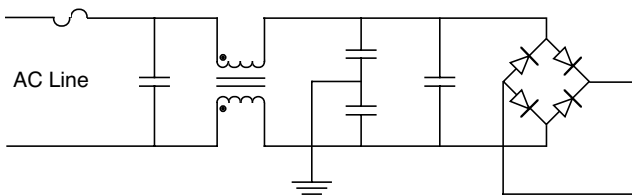
- Used as AC Power Line Filters in CTV, VTR, Audios, PC's, Facsimilies and Power Supply Applications
- Applicable Frequency : 0.1 MHz to 10 MHz
- Low Profile In Vertical Core Layout
- UL940-V Recognized Materials
- UL1446 Insulating System
- 2-Section Bobbin

Electrical Parameters @ 25° C

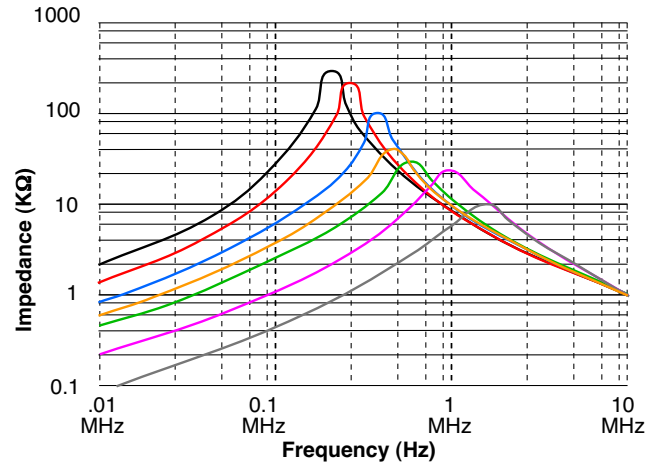
Part Number	Inductance (mH Min.) [Pins 1-2, 4-3]	Current Rating (A rms Max.)
EPZ3060LP-152	1.5	2.0
EPZ3060LP-182	1.8	1.7
EPZ3060LP-222	2.2	1.5
EPZ3060LP-302	3.0	1.3
EPZ3060LP-352	3.5	1.2
EPZ3060LP-552	5.5	1.0
EPZ3060LP-742	7.4	0.8
EPZ3060LP-103	10	0.7
EPZ3060LP-123	12	0.6
EPZ3060LP-203	20	0.5
EPZ3060LP-303	30	0.4
EPZ3060LP-433	43	0.3

• Isolation : 2000 Vrms • Temperature Rise : 60°C Max. •

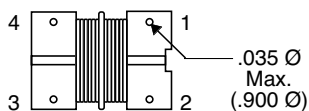
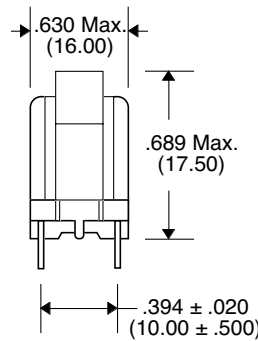
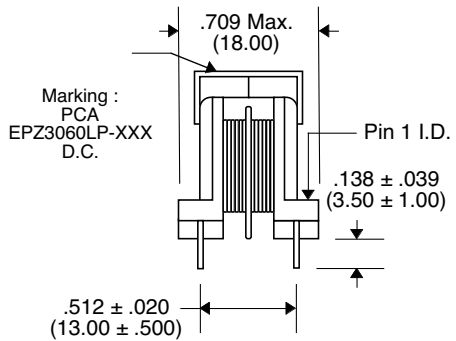
Circuit Sample



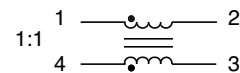
Impedance Characteristics



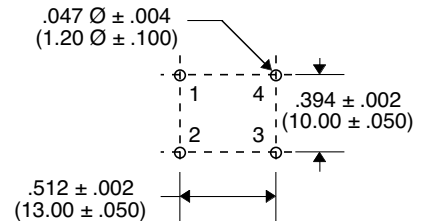
Package



Schematic



Recommended PWB Piercing Plan



Unless Otherwise Specified Dimensions are in Inches /mm ± .010 /25