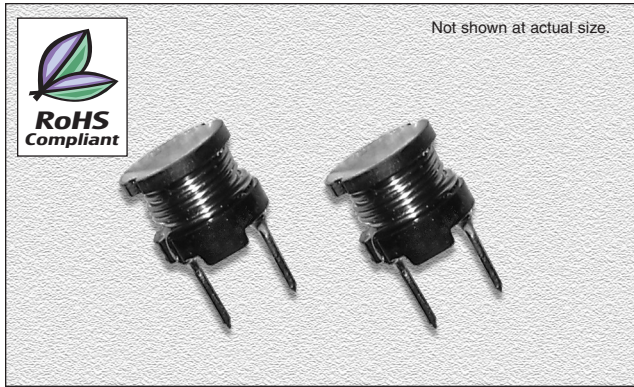


CTCH875F Series

From 10 μH to 10,000 μH

SPECIFICATIONS

Parts numbers indicate available inductance tolerance.
K = $\pm 10\%$, M = $\pm 20\%$



CHARACTERISTICS

Description: Radial leaded fixed inductor

Applications: High reliability, efficiency and saturation. Ideal for use as a power choke coil in switching power supply, TV sets, video appliances, and industrial equipment as well as use as a peaking coil in filtering applications

Inductance Tolerance: $\pm 10\%$, $\pm 20\%$

Testing: Tested on a HP4285A or HP4284A at specified frequency

Packaging: Bulk packaging

Rated Current: The rated D.C. current indicates the value of current when the inductance is 10% lower than its initial value at D.C. superposition or D.C. current when at $\Delta t=40^\circ\text{C}$ whichever is lower. ($T_a=20^\circ\text{C}$)

Miscellaneous: RoHS Compliant

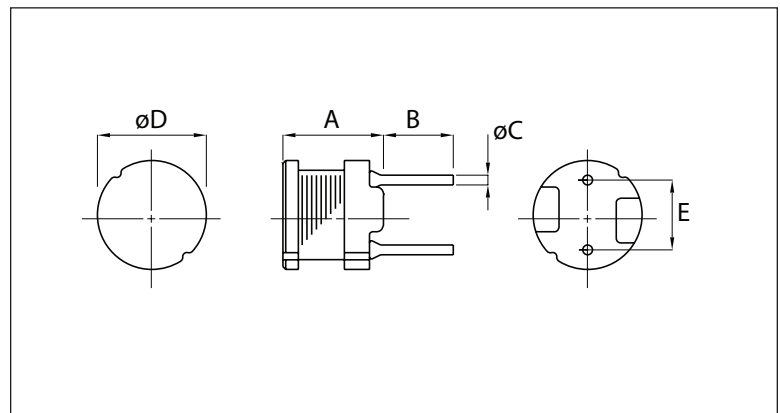
Additional Information: Additional electrical & physical information available upon request

Samples available. See website for ordering information.

Part Number	Inductance (μH)	Test Freq. (Hz)	DCR Max. (Ω)	Rated DC (A)
CTCH875F-100M	10	2.52M	0.05	2.90
CTCH875F-120M	12	2.52M	0.06	2.50
CTCH875F-150K	15	2.52M	0.07	2.20
CTCH875F-180K	18	2.52M	0.08	1.90
CTCH875F-220K	22	2.52M	0.09	1.80
CTCH875F-270K	27	2.52M	0.11	1.70
CTCH875F-330K	33	2.52M	0.13	1.50
CTCH875F-390K	39	2.52M	0.14	1.30
CTCH875F-470K	47	2.52M	0.15	1.30
CTCH875F-560K	56	2.52M	0.18	1.20
CTCH875F-680K	68	2.52M	0.20	1.10
CTCH875F-820K	82	2.52M	0.24	1.00
CTCH875F-101K	100	1.00k	0.28	0.89
CTCH875F-121K	120	1.00k	0.36	0.81
CTCH875F-151K	150	1.00k	0.42	0.72
CTCH875F-181K	180	1.00k	0.57	0.66
CTCH875F-221K	220	1.00k	0.63	0.57
CTCH875F-271K	270	1.00k	0.88	0.51
CTCH875F-331K	330	1.00k	1.05	0.46
CTCH875F-391K	390	1.00k	1.17	0.44
CTCH875F-471K	470	1.00k	1.34	0.41
CTCH875F-561K	560	1.00k	1.72	0.36
CTCH875F-681K	680	1.00k	1.96	0.33
CTCH875F-821K	820	1.00k	2.56	0.30
CTCH875F-102K	1000	1.00k	2.94	0.27
CTCH875F-122K	1200	1.00k	4.04	0.24
CTCH875F-152K	1500	1.00k	4.70	0.22
CTCH875F-182K	1800	1.00k	5.05	0.20
CTCH875F-222K	2200	1.00k	6.25	0.18
CTCH875F-272K	2700	1.00k	8.72	0.16
CTCH875F-332K	3300	1.00k	10.60	0.15
CTCH875F-392K	3900	1.00k	14.20	0.14
CTCH875F-472K	4700	1.00k	16.70	0.12
CTCH875F-562K	5600	1.00k	18.70	0.11
CTCH875F-682K	6800	1.00k	21.80	0.10
CTCH875F-822K	8200	1.00k	28.70	0.093
CTCH875F-103K	10000	1.00k	33.00	0.084

PHYSICAL DIMENSIONS

Size	A Max.	B	C	D	E
mm	7.5	5.0 \pm 1.0	0.7+0.1,-0.05	7.8 \pm 0.5	5.0 \pm 0.3
inches	0.3	0.20 \pm 0.04	0.027+0.004,-0.002	0.30 \pm 0.02	0.20 \pm 0.012



02.22.07