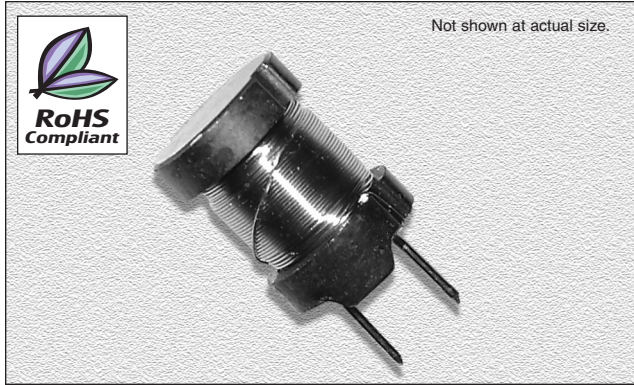


CTCH114F Series

From 6.3 μH to 39,000 μH

SPECIFICATIONS

Parts numbers indicate available inductance tolerance.
L = $\pm 15\%$, M = $\pm 20\%$



CHARACTERISTICS

Description: Radial leaded fixed inductor

Applications: High reliability, efficiency and saturation. Ideal for use as a power choke coil in switching power supply, TV sets, video appliances, and industrial equipment as well as use as a peaking coil in filtering applications

Inductance Tolerance: $\pm 15\%$, $\pm 20\%$

Testing: Tested on a HP4285A or HP4284A at specified frequency

Packaging: Bulk packaging

Rated Current: The rated D.C. current indicates the value of current when the inductance is 10% lower than its initial value at D.C. superposition or D.C. current when at $\Delta t=40^\circ\text{C}$ whichever is lower. ($T_a=20^\circ\text{C}$)

Miscellaneous: RoHS Compliant

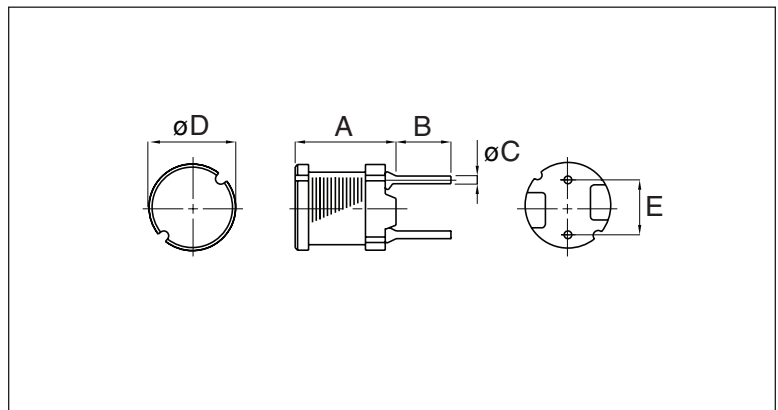
Additional Information: Additional electrical & physical information available upon request

Samples available. See website for ordering information.

| Part Number | Inductance (μH) | Test Freq. (Hz) | DCR Max. (Ω) | Rated DC (A) |
|---------------|------------------------------|-----------------|-----------------------|--------------|
| CTCH114F-6R3M | 6.3 | 2.52M | 0.026 | 4.30 |
| CTCH114F-7R5M | 7.5 | 2.52M | 0.029 | 4.20 |
| CTCH114F-8R8M | 8.8 | 2.52M | 0.030 | 4.10 |
| CTCH114F-100M | 10 | 2.52M | 0.033 | 4.00 |
| CTCH114F-120M | 12 | 2.52M | 0.035 | 3.90 |
| CTCH114F-150M | 15 | 2.52M | 0.039 | 3.70 |
| CTCH114F-180M | 18 | 2.52M | 0.047 | 3.50 |
| CTCH114F-220M | 22 | 2.52M | 0.051 | 3.30 |
| CTCH114F-270M | 27 | 2.52M | 0.057 | 3.10 |
| CTCH114F-330M | 33 | 2.52M | 0.064 | 2.90 |
| CTCH114F-390M | 39 | 2.52M | 0.074 | 2.70 |
| CTCH114F-470M | 47 | 2.52M | 0.083 | 2.50 |
| CTCH114F-560L | 56 | 2.52M | 0.104 | 2.30 |
| CTCH114F-680L | 68 | 2.52M | 0.117 | 2.10 |
| CTCH114F-820L | 82 | 2.52M | 0.130 | 1.90 |
| CTCH114F-101L | 100 | 1.00k | 0.143 | 1.70 |
| CTCH114F-121L | 120 | 1.00k | 0.195 | 1.50 |
| CTCH114F-151L | 150 | 1.00k | 0.221 | 1.40 |
| CTCH114F-181L | 180 | 1.00k | 0.260 | 1.30 |
| CTCH114F-221L | 220 | 1.00k | 0.350 | 1.20 |
| CTCH114F-271L | 270 | 1.00k | 0.390 | 1.10 |
| CTCH114F-331L | 330 | 1.00k | 0.520 | 1.00 |
| CTCH114F-391L | 390 | 1.00k | 0.570 | 0.92 |
| CTCH114F-471L | 470 | 1.00k | 0.650 | 0.84 |
| CTCH114F-561L | 560 | 1.00k | 0.790 | 0.75 |
| CTCH114F-681L | 680 | 1.00k | 0.960 | 0.69 |
| CTCH114F-821L | 820 | 1.00k | 1.220 | 0.62 |
| CTCH114F-102L | 1000 | 1.00k | 1.600 | 0.52 |
| CTCH114F-122L | 1200 | 1.00k | 2.200 | 0.46 |
| CTCH114F-152L | 1500 | 1.00k | 2.500 | 0.41 |
| CTCH114F-182L | 1800 | 1.00k | 2.900 | 0.36 |
| CTCH114F-222L | 2200 | 1.00k | 3.200 | 0.32 |
| CTCH114F-272L | 2700 | 1.00k | 3.700 | 0.29 |
| CTCH114F-332L | 3300 | 1.00k | 5.000 | 0.27 |
| CTCH114F-392L | 3900 | 1.00k | 5.600 | 0.25 |
| CTCH114F-472L | 4700 | 1.00k | 7.400 | 0.23 |
| CTCH114F-562L | 5600 | 1.00k | 8.200 | 0.21 |
| CTCH114F-682L | 6800 | 1.00k | 11.900 | 0.19 |
| CTCH114F-822L | 8200 | 1.00k | 14.000 | 0.17 |
| CTCH114F-103L | 10000 | 1.00k | 16.000 | 0.16 |
| CTCH114F-123L | 12000 | 1.00k | 21.000 | 0.15 |
| CTCH114F-153L | 15000 | 1.00k | 24.000 | 0.14 |
| CTCH114F-183L | 18000 | 1.00k | 27.000 | 0.13 |
| CTCH114F-223L | 22000 | 1.00k | 34.000 | 0.12 |
| CTCH114F-273L | 27000 | 1.00k | 39.000 | 0.11 |
| CTCH114F-333L | 33000 | 1.00k | 51.000 | 0.10 |
| CTCH114F-393L | 39000 | 1.00k | 58.000 | 0.09 |

PHYSICAL DIMENSIONS

| Size | A | B | C | D | E |
|--------|------|-----------------|--------------------|-----------------|------------------|
| | Max. | | | | |
| mm | 14.4 | 5.0 \pm 1.0 | 0.7+0.1,-0.05 | 10.0 \pm 0.5 | 5.0 \pm 0.3 |
| inches | 0.57 | 0.20 \pm 0.04 | 0.027+0.004,-0.002 | 0.40 \pm 0.02 | 0.20 \pm 0.012 |



02.22.07