

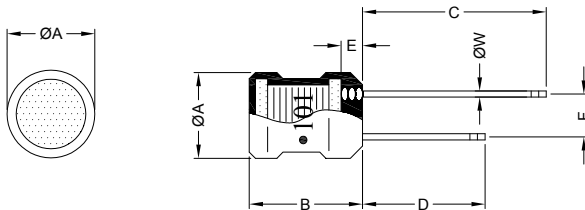
# RADIAL CHOKE COIL

RCB0710 SERIES

## 1. PART NO. EXPRESSION :

R	C	B	0	7	1	0	4	7	0	K	Z	F
(a)	(b)	(c)	(d)(e)(f)				(a) Series code				(d) Tolerance code : K = ±10%	
							(b) Dimension code				(e) X, Y, Z : Standard part	
							(c) Inductance code : 470 = 47uH				(f) F : Lead Free	

## 2. CONFIGURATION & DIMENSIONS :

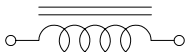


Marking :  
" ● " : Start

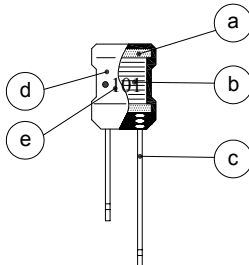
Unit:m/m

ØA	B	C	D	E	F	ØW
6.70±0.5	10.00±1.0	25.00±5.0	18.00±5.0	2.50 Max.	3.00±0.5	0.65 Ref.

## 3. SCHEMATIC :



## 4. MATERIALS :

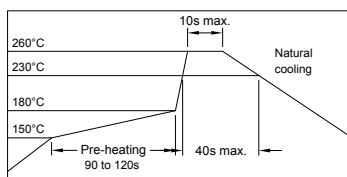


- (a) Core : DR Ferrite Core
- (b) Wire : Enamelled Copper Wire
- (c) Lead : Tinned Copper Wire
- (d) Tube : Shrinkable Tube
- (e) Ink : Bon Margue

## 5. GENERAL SPECIFICATION :

- a) Temp. rise : 20°C Max. at rated current
- b) Storage temp. : -40°C to +125°C
- c) Operating temp. : -40°C to +105°C

RECOMMENDED SOLDERING CONDITIONS  
REFLOW SOLDERINGS



NOTE : Specifications subject to change without notice. Please check our website for latest information.



RoHS Compliant

22.04.2008



SUPERWORLD ELECTRONICS (S) PTE LTD

### 6. ELECTRICAL CHARACTERISTICS :

Part No.	Inductance ( $\mu$ H )	Q Min.	Test Frequency ( MHz )	SRF ( MHz ) Min.	RDC ( $\Omega$ ) Max.	IDC ( mA ) Max.
RCB0710470KZF	47 $\pm$ 10%	30	2.52	6.00	0.40	450
RCB0710560KZF	56 $\pm$ 10%	30	2.52	5.50	0.45	400
RCB0710680KZF	68 $\pm$ 10%	30	2.52	5.00	0.50	360
RCB0710820KZF	82 $\pm$ 10%	30	2.52	4.50	0.50	340
RCB0710101KZF	100 $\pm$ 10%	45	0.796	4.20	0.60	320
RCB0710121KZF	120 $\pm$ 10%	45	0.796	3.60	0.70	300
RCB0710151KZF	150 $\pm$ 10%	45	0.796	3.40	0.90	280
RCB0710181KZF	180 $\pm$ 10%	45	0.796	3.20	1.00	260
RCB0710221KZF	220 $\pm$ 10%	45	0.796	3.00	1.20	240
RCB0710271KZF	270 $\pm$ 10%	45	0.796	2.80	1.40	220
RCB0710331KZF	330 $\pm$ 10%	45	0.796	2.50	1.60	200
RCB0710391KZF	390 $\pm$ 10%	45	0.796	2.30	1.80	180
RCB0710471KZF	470 $\pm$ 10%	45	0.796	2.20	2.00	160
RCB0710561KZF	560 $\pm$ 10%	45	0.796	2.00	2.50	150
RCB0710681KZF	680 $\pm$ 10%	45	0.796	1.70	2.90	140
RCB0710821KZF	820 $\pm$ 10%	45	0.796	1.50	3.10	130
RCB0710102KZF	1000 $\pm$ 10%	45	0.252	1.40	3.90	120
RCB0710122KZF	1200 $\pm$ 10%	60	0.252	1.10	4.40	110
RCB0710152KZF	1500 $\pm$ 10%	60	0.252	0.90	6.00	100
RCB0710182KZF	1800 $\pm$ 10%	60	0.252	0.80	7.00	90
RCB0710222KZF	2200 $\pm$ 10%	60	0.252	0.75	8.00	80
RCB0710272KZF	2700 $\pm$ 10%	60	0.252	0.70	9.00	70
RCB0710332KZF	3300 $\pm$ 10%	60	0.252	0.60	12.00	60
RCB0710392KZF	3900 $\pm$ 10%	60	0.252	0.55	14.00	55
RCB0710472KZF	4700 $\pm$ 10%	60	0.252	0.50	16.00	50
RCB0710562KZF	5600 $\pm$ 10%	60	0.252	0.48	18.00	45
RCB0710682KZF	6800 $\pm$ 10%	60	0.252	0.44	24.00	40
RCB0710822KZF	8200 $\pm$ 10%	60	0.252	0.40	30.00	36
RCB0710103KZF	10000 $\pm$ 10%	60	0.0796	0.36	39.00	34
RCB0710123KZF	12000 $\pm$ 10%	60	0.0796	0.32	46.00	32
RCB0710153KZF	15000 $\pm$ 10%	60	0.0796	0.30	54.00	30
RCB0710183KZF	18000 $\pm$ 10%	60	0.0796	0.28	76.00	27
RCB0710223KZF	22000 $\pm$ 10%	60	0.0796	0.24	92.00	25
RCB0710273KZF	27000 $\pm$ 10%	60	0.0796	0.20	102.00	22
RCB0710333KZF	33000 $\pm$ 10%	60	0.0796	0.16	140.00	20
RCB0710393KZF	39000 $\pm$ 10%	60	0.0796	0.13	150.00	18
RCB0710473KZF	47000 $\pm$ 10%	60	0.0796	0.10	162.00	16



**RoHS Compliant**

NOTE : Specifications subject to change without notice. Please check our website for latest information.

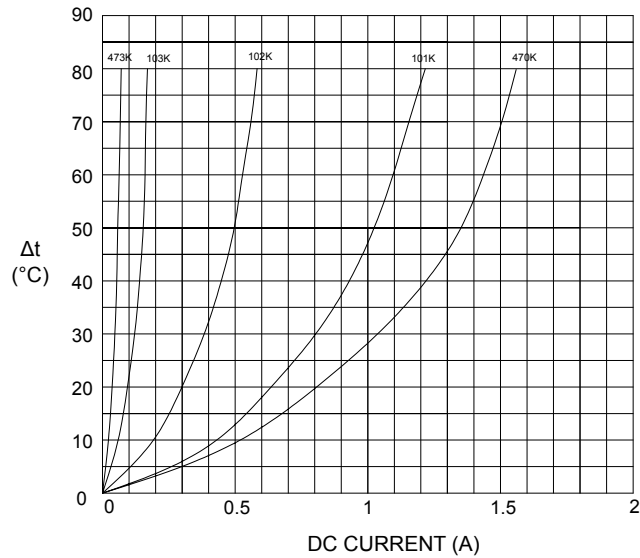
22.04.2008



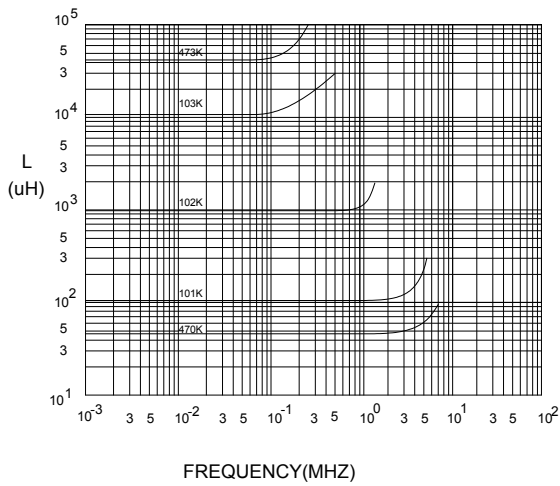
**SUPERWORLD ELECTRONICS (S) PTE LTD**

### 7. CHARACTERISTICS CURVES :

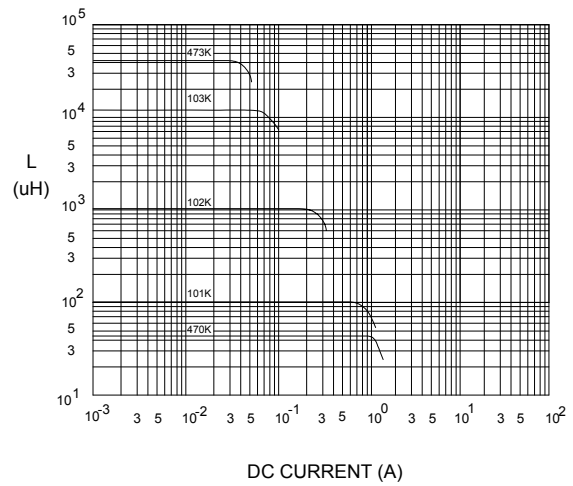
@ TEMP. RISE VS. DC SUPERPOSITION RESPONSE CURVE



@ INDUCTANCE VS. FREQUENCY RESPONSE CURVE



@ INDUCTANCE VS. DC SUPERPOSITION RESPONSE CURVE



NOTE : Specifications subject to change without notice. Please check our website for latest information.



**RoHS Compliant**

22.04.2008



**SUPERWORLD ELECTRONICS (S) PTE LTD**

# RADIAL CHOKE COIL

RCB0710 SERIES

8. UL CARD :

**OBMW2** **November 30, 2000**  
**Magnet Wire - Component**  
**PACIFIC ELECTRIC WIRE & CABLE (SHENZHEN) CO LTD** **E201757**  
 607 BAOLONG INDUSTRIAL ESTATE LONGGANG, SHENZHEN  
 GUANGDONG CHINA

Mtl Dsg	Coating Type		ANSI	TI
	BC	TC	Type	
UEW/U	Polyurethane	—	—	130
PEW/U	Polyester	—	MW5-C	155°C
PEWH/U	Modified Polyester	—	MW30-C	180
PEW-NY/U	Polyester	Polyamide	MW24-C	155
HAI/U	Polyester(Amide)(Imide)	Polyamideimide	MW35,73	200
UEW-NY/U	Polyurethane	Polyamide	MW80-C	155
			MW28-C	130

**Marking: Company name and material designation or marked designation on package or reel, and Recognized Component Mark.**

See General Information Preceding These Recognitions

1/3/2001 Underwriters Laboratories Inc. Card 1 of 2

**YDPU8** **August 18, 1999**  
**Tubing Extruded Insulating Certified For Canada - Component**  
**SHENZHEN CHANGBAO SPECIAL PLASTIC PRODUCTS CO LTD** **E180908**  
 SHENZHEN SCIENCE & INDUSTRY PARK NAN SHAN  
 SHENZHEN, GUANGDONG 518057 CHINA

Cat. No.	Max V	Max Temp C	Col Recognized	Max Temp Rated Oil Resistance *C	OFT Rated #
<b>Polyolefin heat shrinkable tubing.</b> Changbao 102	600	125	All	—	Yes

**#Tubing is considered to comply with the optional OFT flammability requirements only if it is so marked.**

**Marking: Company name, catalog number and temperature rating in degrees C appears on tubing, tags attached to both ends of the tubing or on the shipping spool label or smallest unit container and the Recognized Component Mark for Canada .**

See General Information Preceding These Recognitions  
 For use only in equipment where the acceptability of the combination is determined by Underwriters Laboratories Inc.

8/31/1999 Underwriters Laboratories Inc. Card 1 of 1



**RoHS Compliant**

NOTE : Specifications subject to change without notice. Please check our website for latest information.

22.04.2008