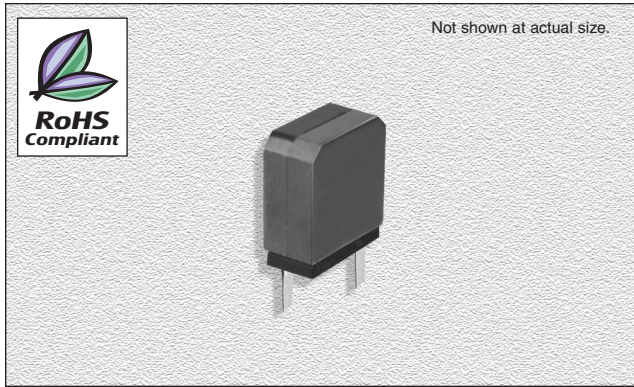


CTDA13AF Series

From 10 μH to 33 μH



CHARACTERISTICS

Description: Inductor for digital amplifier LPF

Applications: Suitable as choke coil for digital amplifier. Audio, DVD 5.1ch home theater, AV amplifier, LCD, PDP. Usable as a choke coil for power supplies, etc.

Features: Compact and low-profile. Output 85W. Magnetically shielded structure and low DC resistance. High sound quality. Low electromagnetic interference. Low resistance and high current.

Inductance Tolerance: $\pm 20\%$

Testing: Tested on a HP4284A at 1.0 KHz

Packaging: Bulk

Marking: Parts are marked with inductance code

Miscellaneous: **RoHS Compliant**

Additional Information: Additional electrical & physical information available upon request

Samples available. See website for ordering information.

SPECIFICATIONS

Parts are available in $\pm 20\%$ tolerance only.

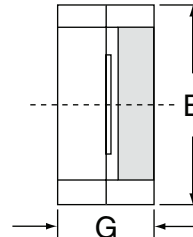
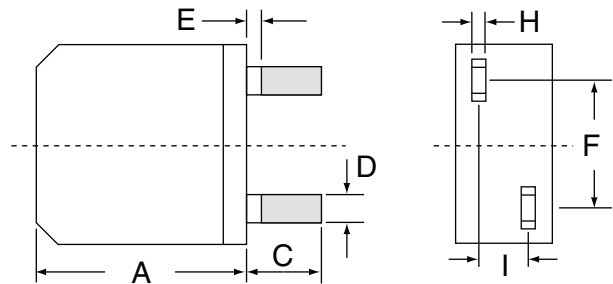
* Rated DC Current: Inductance drift is within -25% at the superposition

** Allowable Current: A rise in temp. of surface core within 40°C.

Part Number	Inductance ($\mu\text{H} \pm 20\%$)	L Test Freq. (KHz)	DCR Max. (m Ω)	*Rated DC Current (A)	**Allowable DC Current (A)
CTDA13AF-100M	10	1.0	5.4	6.0	8.0
CTDA13AF-150M	15	1.0	6.8	5.0	7.5
CTDA13AF-220M	22	1.0	8.1	4.2	7.0
CTDA13AF-270M	27	1.0	13.5	3.8	5.6
CTDA13AF-330M	33	1.0	14.7	3.4	5.3

PHYSICAL DIMENSIONS

Size	A Max.	B	C	D	E Max.	F
mm	15.0	13.0 \pm 0.5	5.0 \pm 1.0	1.8 \pm 0.5	1.0	8.4 \pm 0.5
inches	0.59	0.51 \pm 0.02	0.2 \pm 0.039	0.071 \pm 0.02	0.039	0.33 \pm 0.02



Tolerance: $\pm 0.5\text{mm}$

L(μH)	G	I	H
10	6.4	3.3	0.5/0.33
15	8.4	4.0	0.5
22	8.4	4.8	0.5
27	8.4	4.0	0.33
33	8.4	4.8	0.33

06.29.07