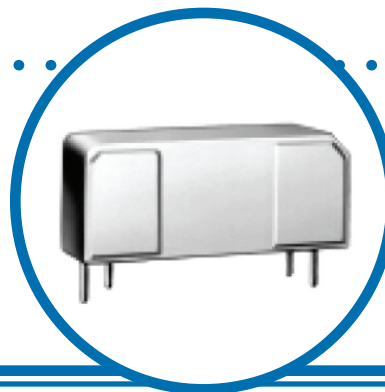


# Telecommunications Line Feed Resistors



## ALFR-2B Series

- 1% tolerance
- Auto-insertable, small size
- Withstands lightning surges
- 4.8 ohm to 1600 ohm range
- Opens safely under power cross
- Flameproof inorganic construction
- Meets all test and specifications of GR-1089 & UL-497A
- Meets FCC and EIA requirements and is UL-497A approved



## Environmental Data

Characteristics	Limits-ALFR-2B
Wattage	2 watts
Temperature Coefficient	50 ppm/°C
Tolerance	1% and 5%
Load Life (1000 hours)	1%ΔR maximum
Temperature Cycling	1%ΔR maximum
Short Time Overload (5x RW for 10 sec.)	1%ΔR maximum
Moisture Load	1%ΔR maximum
Resistance Range	4.8 to 1600 ohms
Lightning Surge (1000V-10/1000μsec.) 25 negative & 25 positive surges (2 minute intervals)	No failures

### DESIGN & CONSTRUCTION:

The Line Feed Resistor is a tight tolerance, stable resistor which has the additional capability to withstand both in rush currents and certain lightning pulse surges but would fuse safely when exposed to overload conditions such as the 600 volt power cross specified in GR-1089.

#### General Note

IRC reserves the right to make changes in product specification without notice or liability.  
All information is subject to IRC's own data and is considered accurate at time of going to print.

Wire and Film Technologies Division • 4222 South Staples Street • Corpus Christi Texas 78411 USA  
Telephone: 361 992 7900 • Facsimile: 361 992 3377 • Website: [www.irc-tt.com](http://www.irc-tt.com)



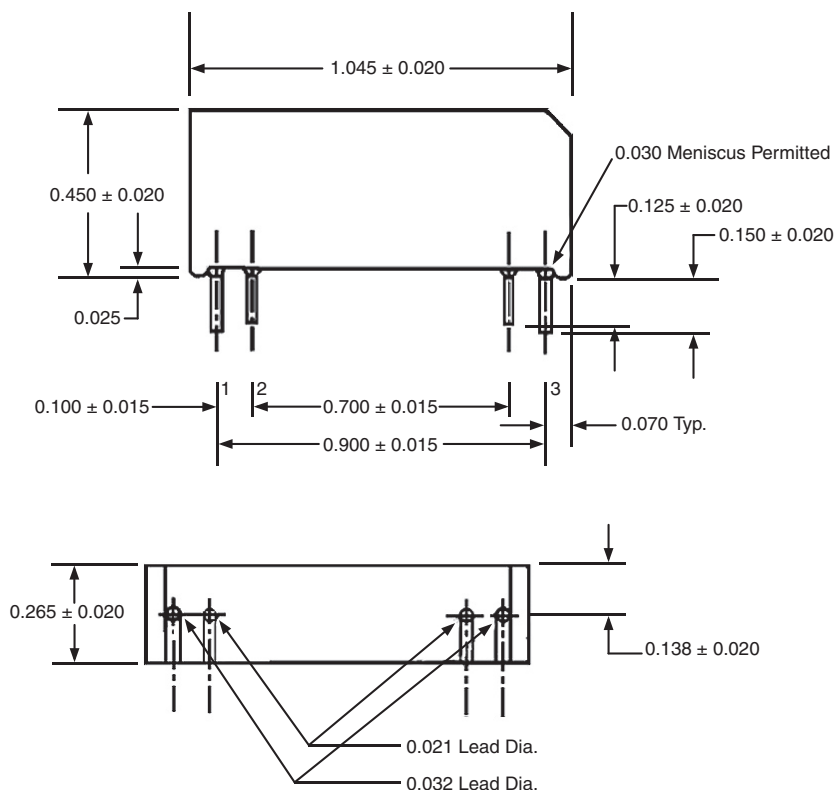
A subsidiary of  
TT electronics plc

# Telecommunications Line Feed Resistors



## Physical Data

The four (4) terminal leads shall be in the line to a tolerance to  $\pm 0.015$  inch. The lead spacing dimensions as specified, shall be measures from the tip of the lead. The leads may have a  $15^\circ$  draft relative to the protector body.



## Ordering Data

Sample Part No. .... **ALFR** - **2B** **1000** **F**

IRC Type .....  
ALFR

Power .....  
2B = 2 watts

Resistance Value .....

Tolerance .....  
F =  $\pm 1\%$ , J =  $\pm 5\%$

**How to use the ALFR-2B:**  
Leads 1 & 2 can be interchanged with leads 3 & 4. The part can then be inserted into the circuit in either orientation.