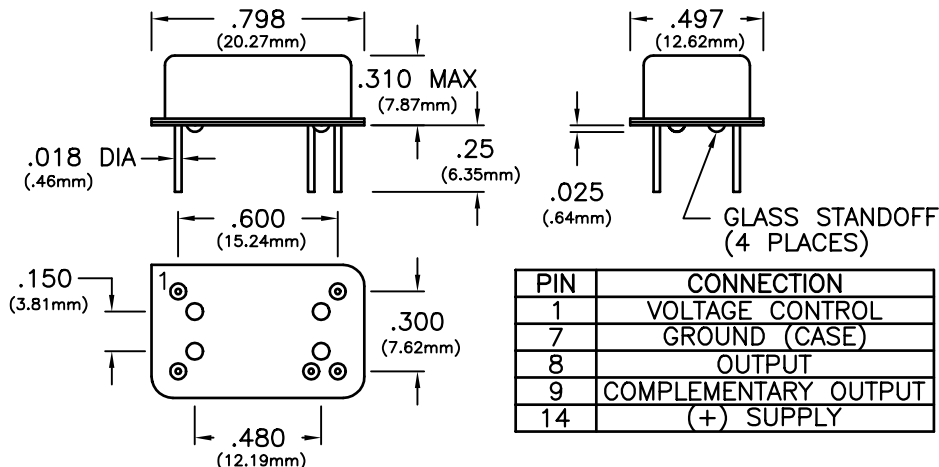


DIFFERENTIAL OUTPUT 14 PIN PECL VCXO

| SPECIFICATIONS | PV52-120 |
|-------------------------------|--|
| Nominal Frequency (Fo) | 125MHz |
| Frequency Stability | ±50ppm |
| (Referenced to nominal freq.) | (Inclusive of calibration, operating temperature range, supply voltage change, load change, aging, shock and vibration.) |
| Temperature Range | 0°C to +70°C |
| Waveform | PECL Squarewave |
| Load | 50 Ohms |
| Voltage | Voh 3.96 Minimum |
| | Vol 3.40 Maximum |
| Duty Cycle | 45/55 Maximum (Both outputs) |
| Rise/Fall Time | 1.5nS Typical, 2.0nS Maximum |
| Jitter | 10pS (RMS) Maximum |
| SSB Phase Noise (Typical) | -80dBc/Hz @ 100Hz , -130dBc/Hz @ 10KHz |
| Frequency Control | |
| Pullability @25°C | ±60ppm Minimum |
| (Referenced to 2.5V freq.) | ±150ppm Maximum |
| Transfer Function | Positive |
| Control Voltage | 0.5 to +4.5Vdc |
| Center Frequency | ±15ppm |
| (@25°C, 2.5Vdc pin 1) | |
| Linearity | ±10% Maximum |
| Freq Modulation Bandwidth | ≥ 10KHz (3dB cutoff) |
| Supply Voltage | +5Vdc ±10% |
| Supply Current | 85mA Maximum |
| Package | All metal, hermetically sealed, welded package |



ORDERING INFORMATION

PV52-120 - 125 MHz

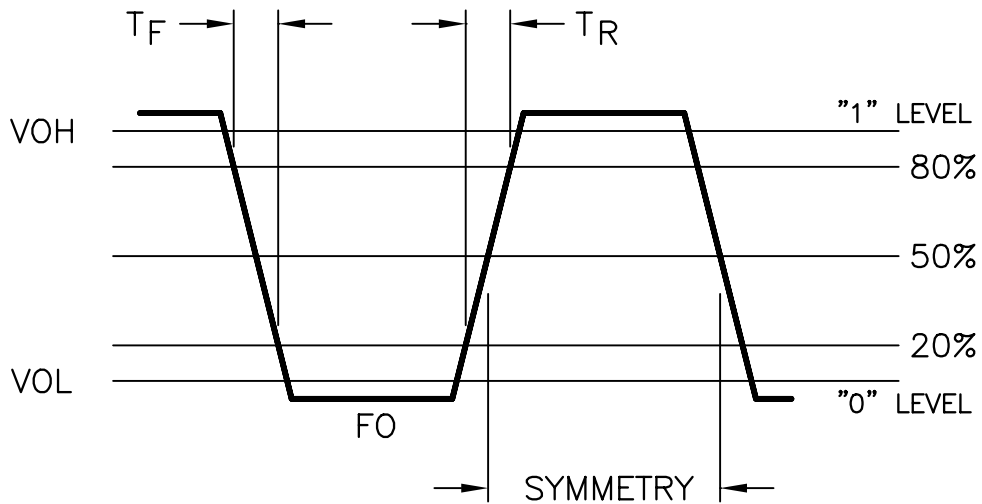
VCXO
SERIES

CENTER
FREQUENCY

| PIN | CONNECTION |
|-----|----------------------|
| 1 | VOLTAGE CONTROL |
| 7 | GROUND (CASE) |
| 8 | OUTPUT |
| 9 | COMPLEMENTARY OUTPUT |
| 14 | (+) SUPPLY |

DIFFERENTIAL OUTPUT 14 PIN PECL VCXO

OUTPUT WAVEFORM



TEST CIRCUIT

