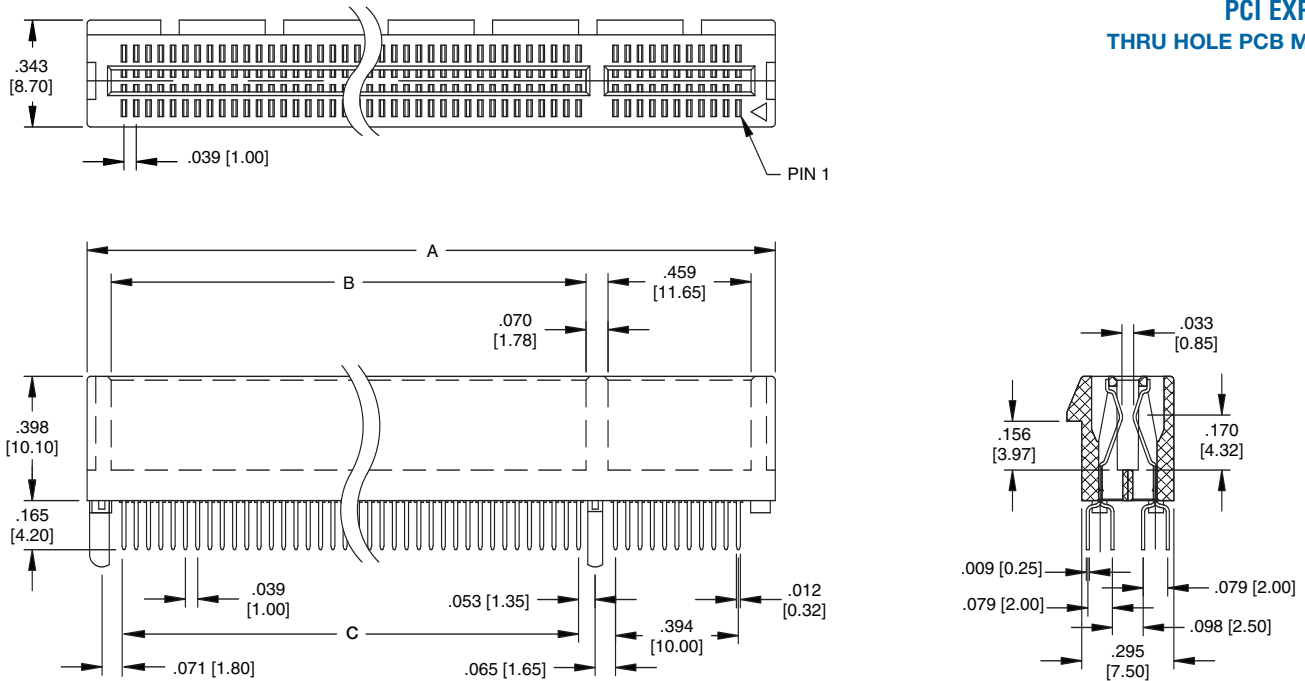
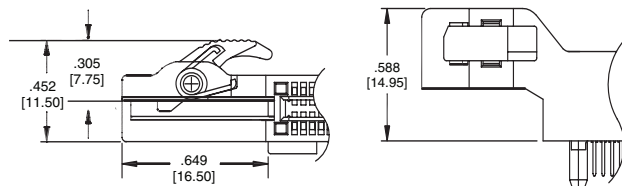


PCI EXPRESS THRU HOLE PCB MOUNT

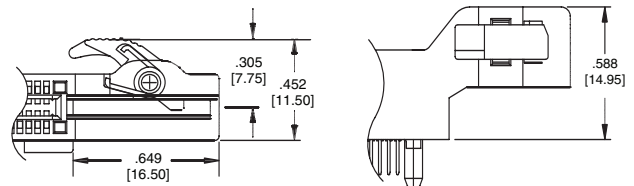


PART NO. & POSITIONS	DIMENSIONS			
	A	B	C	D
PCIE-36-1	.984 [25.00]	.301 [7.65]	.236 [6.00]	.321 [8.15]
PCIE-64-1	1.535 [39.00]	.852 [21.65]	.787 [20.00]	.872 [22.15]
PCIE-98-1	2.205 [56.00]	1.522 [38.65]	1.457 [37.00]	1.541 [39.15]
PCIE-164-1	3.504 [89.00]	2.821 [71.65]	2.756 [70.00]	2.840 [72.15]

PCI LATCHING OPTIONS

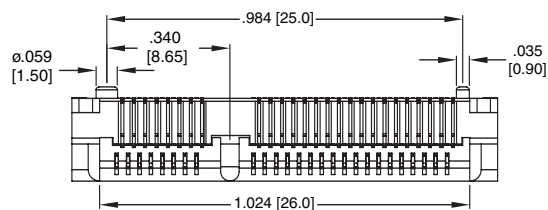


PCI Express Latch Option - Left Side

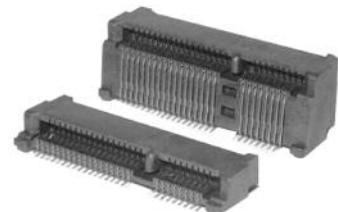
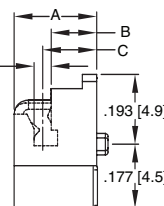
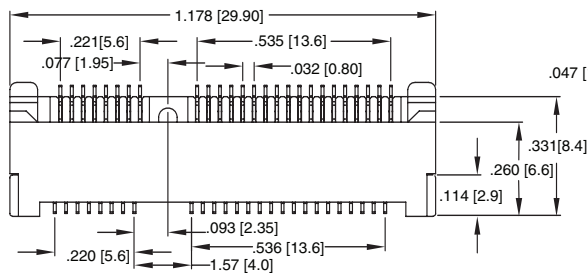


PCI Express Latch Option - Right Side

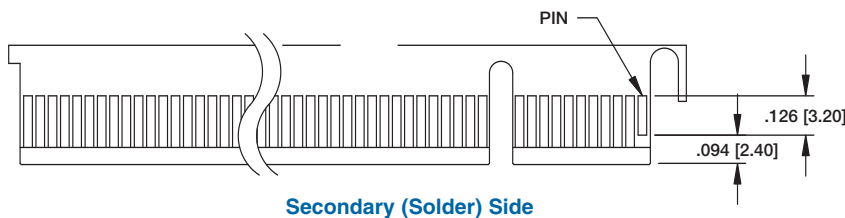
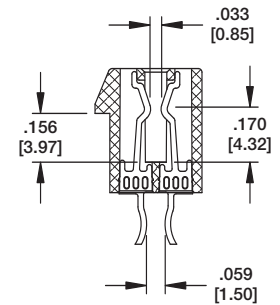
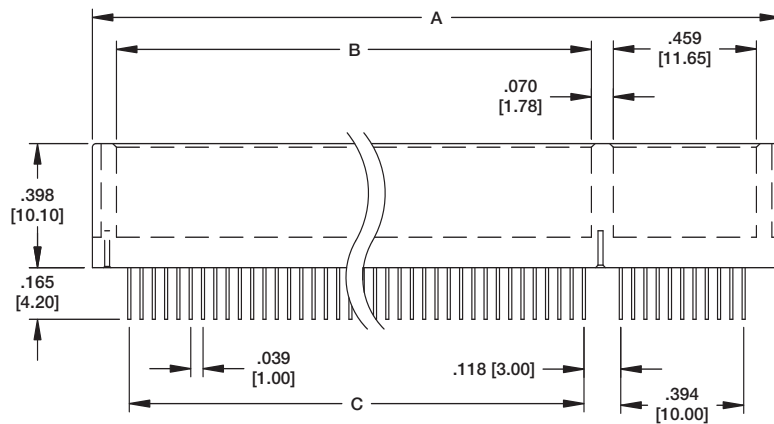
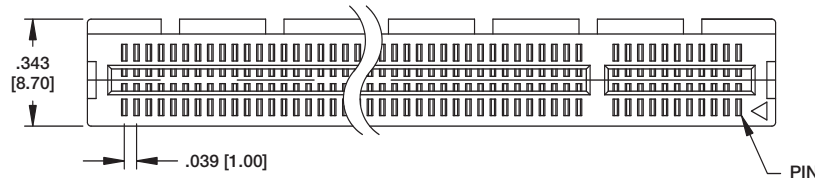
MINI PCI EXPRESS



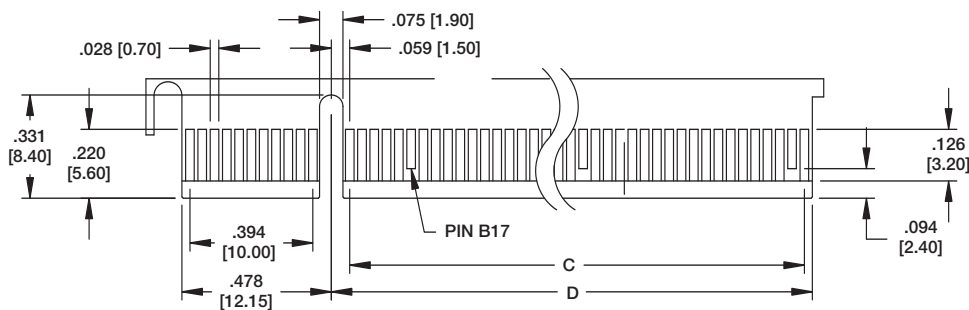
/	A	B	C
522.0	4.0	1.4	2.00
523.2	5.2	2.6	3.20
523.8	5.6	3.2	3.80
523.8A	5.8	3.2	3.80
524.95	6.7	4.35	4.95
526.25	8.0	5.65	6.25
527.0	9.0	6.4	7.0
529.0	9.9	7.4	8.0



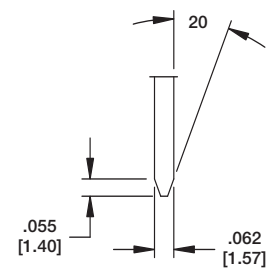
PCI EXPRESS STRADDLE MOUNT



Secondary (Solder) Side



Primary (Component) Side



PART NO. & POSITIONS	DIMENSIONS			
	A	B	C	D
PCIE-36-SM	.984 [25.00]	.301 [7.65]	.236 [6.00]	.321 [8.15]
PCIE-64-SM	1.535 [39.00]	.852 [21.65]	.787 [20.00]	.872 [22.15]
PCIE-98-SM	2.205 [56.00]	1.522 [38.65]	1.457 [37.00]	1.541 [39.15]
PCIE-164-SM	3.504 [89.00]	2.821 [71.65]	2.756 [70.00]	2.840 [72.15]