

## M3T-DIRECT100S

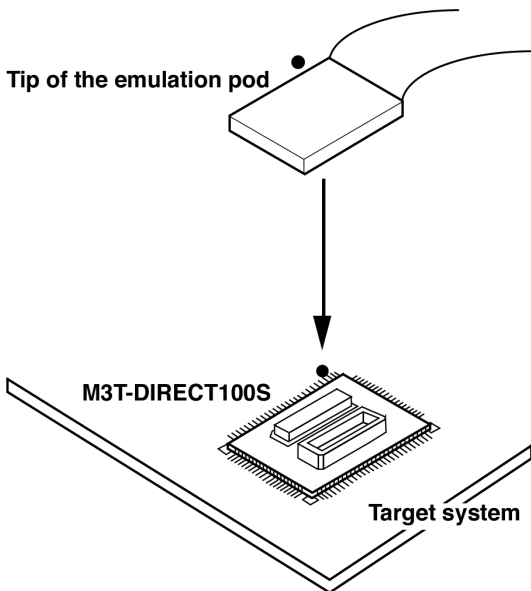
Direct Dummy IC for 100-pin 0.65mm-pitch QFP

### Function

This accessory tool connects an emulation pod and the target. It can be mounted on the same foot pattern as the MCU housed in the 100-pin 0.65mm-pitch QFP (100P6S-A or 100P6S-E) package.

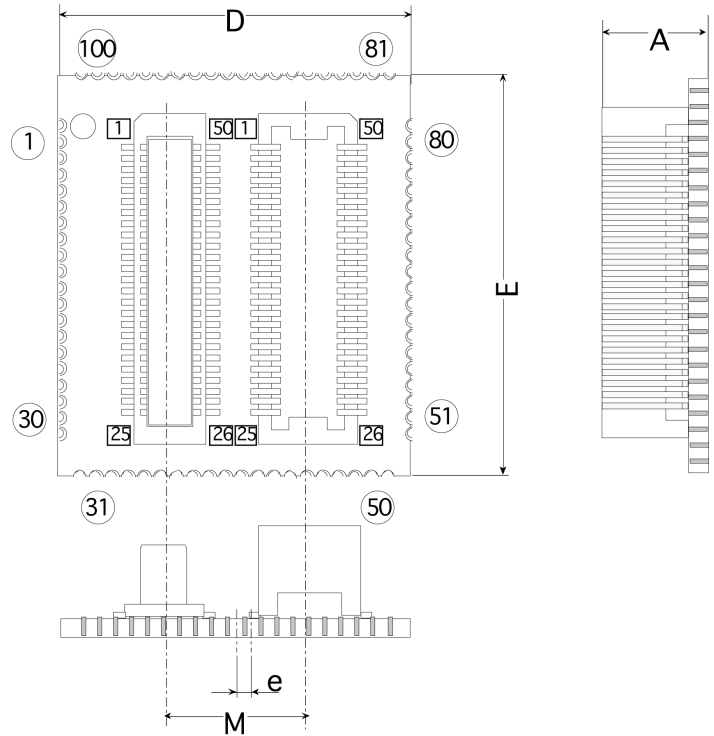
### Attaching Procedure

Mount this dummy IC on the foot pattern on the target. Then connect the emulation pod to the connector provided at the top of this dummy IC.



\* ● : Position of No. 1 pin

### Dimensions



denotes pin numbers on the M3T-DIRECT100S.

1 denotes pin numbers of the top of a connector.

Symbol	Term	Dimensions [mm]
A	Fitting height	5.4
D	Package length	17.0
E	Package width	23.0
e	Interval in row of pins	0.65
M	Mount pad size	6.3

### Foot Pattern Reference Dimensions

See Appendix C "Reference Dimensional Drawings for Common 100-pin 0.65mm-pitch QFP Foot Pattern".

[Ordering Information] See Appendix H "Ordering Information".