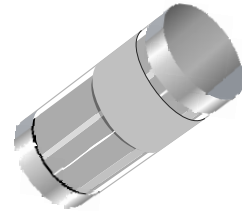


Surface Mount Switching Diode

Features

- Fast Switching Speed
- Surface Mount Package Ideally Suited for Automatic Insertion
- General Purpose Rectification
- Silicon Epitaxial Planar Construction
- RoHS compliant



**MiniMELF
(SOD-80C)**



Mechanical Data

Case:	MiniMelf (SOD-80C), Glass Case
Terminals:	Solderable per MIL-STD-202, Method 208
Weight:	0.05 grams

Maximum Ratings & Electrical Characteristics ($T_{Ambient}=25^{\circ}C$ unless noted otherwise)

Symbol	Description	LL4148	LL4448	Unit	Conditions
VRM	Reverse Voltage	75		V	
VRRM	Peak Reverse Voltage	100		V	
IF(AV)	Forward Average Current	150		mA	Valid provided that electrodes are kept at ambient temperature
IFSM	Peak Forward Surge Current, Pulse Width=1.0us	2.0		A	
PD	Power Dissipation above 25°C	500		mW	
VF	Forward Voltage	Min	---	0.62 @ 5mA	V
		Max	1.0 @ 10mA	0.72 @ 5mA	
				1.0 @ 100mA	
IR	Max. Reverse Current	0.025	0.025	μA	VR=20V
		5.0	5.0		VR=75V
CD	Diode Capacitance	4.0		pF	VR=0V, f=1MHz
Trr	Reverse Recovery Time	4.0		ns	IF= 10mA,IR=1mA, VR=6V,RL=100Ω
TJ,TSTG	Operating Junction and Storage Temperature Range	-65 to +175		°C	

Surface Mount Switching Diode

LL4148 LL4448

Typical Characteristics Curves

Fig.1- Power Derating Curve

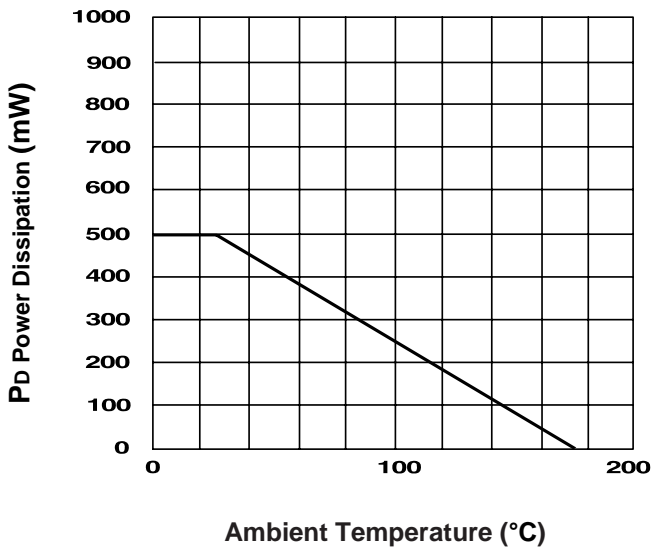


Fig.2- Typical Forward Characteristics

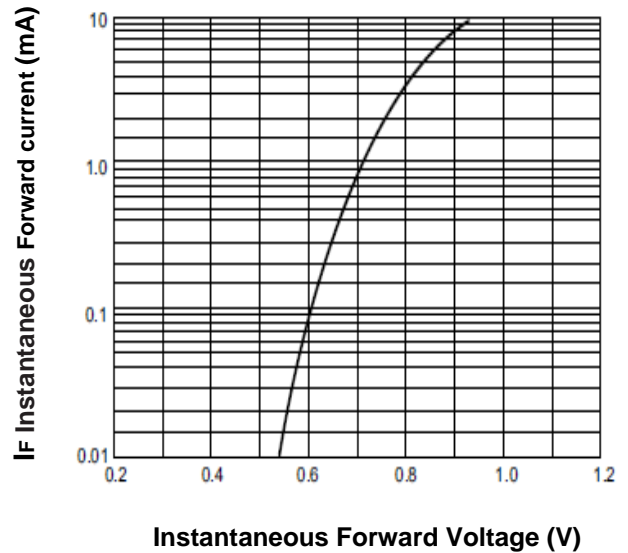


Fig.3- Typical junction capacitance

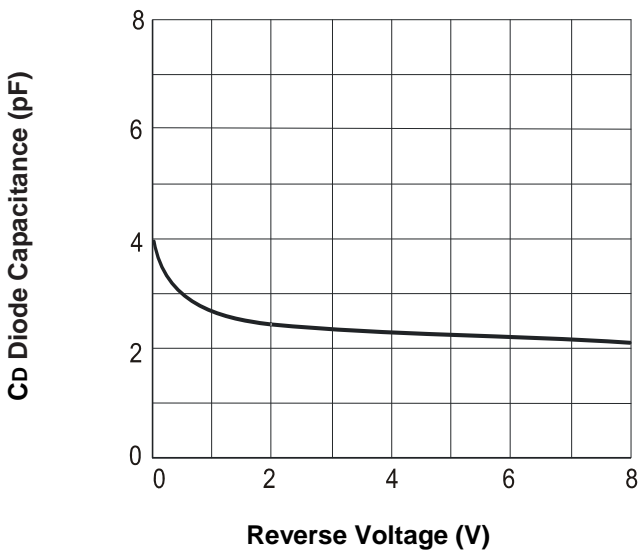
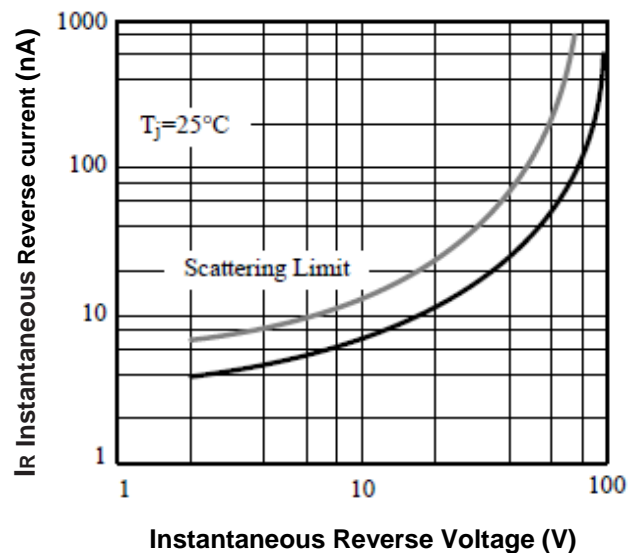


Fig.4- Typical Reverse Characteristics

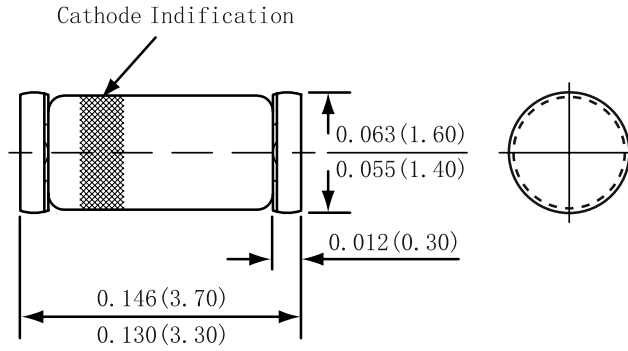


Surface Mount Switching Diode

LL4148 LL4448

Dimensions in inches (mm)

MiniMELF
(SOD-80C)



Surface Mount Switching Diode

LL4148 LL4448

How to contact us:

US HEADQUARTERS

28040 WEST HARRISON PARKWAY, VALENCIA, CA 91355-4162

Tel: (800) TAITRON (800) 824-8766 (661) 257-6060

Fax: (800) TAITFAX (800) 824-8329 (661) 257-6415

Email: taitron@taitroncomponents.com

Http://www.taitroncomponents.com

TAITRON COMPONENTS MEXICO, S.A .DE C.V.

BOULEVARD CENTRAL 5000 INTERIOR 5 PARQUE INDUSTRIAL ATITALAQUIA, HIDALGO C.P.
42970 MEXICO

Tel: +52-55-5560-1519

Fax: +52-55-5560-2190

TAITRON COMPONENTS INCORPORATED REPRESENTAÇÕES DO BRASIL LTDA

RUA DOMINGOS DE MORAIS, 2777, 2.ANDAR, SALA 24 SAÚDE - SÃO PAULO-SP 04035-001 BRAZIL

Tel: +55-11-5574-7949

Fax: +55-11-5572-0052

TAITRON COMPONENTS INCORPORATED, SHANGHAI REPRESENTATIVE OFFICE

CROSS REGION PLAZA, 899 LINGLING ROAD, SUITE 18C, SHANGHAI, 200030, CHINA

Tel: +86-21-5424-9942

Fax: +86-21-5424-9931