

# FRAF1601G - FRAF1607G

Isolated 16.0 AMPS. Glass Passivated  
Fast Recovery Rectifiers  
**ITO-220AC**

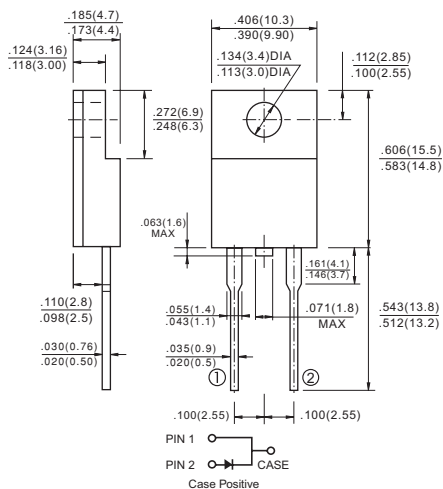


## Features

- ✧ Glass passivated chip junction.
- ✧ High efficiency, Low VF
- ✧ High current capability
- ✧ High reliability
- ✧ High surge current capability
- ✧ Low power loss

## Mechanical Data

- ✧ Cases: ITO-220AC molded plastic
- ✧ Epoxy: UL 94V-0 rate flame retardant
- ✧ Terminals: Pure tin plated, Lead free. Leads solderable per MIL-STD-202, Method 208 guaranteed
- ✧ Polarity: As marked
- ✧ High temperature soldering guaranteed: 260 °C /10 seconds 0.25", (6.35mm) from case.
- ✧ Mounting position: Any
- ✧ Weight: 2.24 grams
- ✧ Mounting torque: 5 in – 1bs. max.



Dimensions in inches and (millimeters)

## Maximum Ratings and Electrical Characteristics

Rating at 25 °C ambient temperature unless otherwise specified.

Single phase, half wave, 60 Hz, resistive or inductive load.

For capacitive load, derate current by 20%

Type Number	Symbol	FRAF 1601G	FRAF 1602G	FRAF 1603G	FRAF 1604G	FRAF 1605G	FRAF 1606G	FRAF 1607G	Units
Maximum Recurrent Peak Reverse Voltage	$V_{RRM}$	50	100	200	400	600	800	1000	V
Maximum RMS Voltage	$V_{RMS}$	35	70	140	280	420	560	700	V
Maximum DC Blocking Voltage	$V_{DC}$	50	100	200	400	600	800	1000	V
Maximum Average Forward Rectified Current See Fig. 1	$I_{(AV)}$	16.0							A
Peak Forward Surge Current, 8.3 ms Single Half Sine-wave Superimposed on Rated Load (JEDEC method )	$I_{FSM}$	250							A
Maximum Instantaneous Forward Voltage @ 16.0A	$V_F$	1.3							V
Maximum DC Reverse Current @ $T_C=25^\circ\text{C}$ at Rated DC Blocking Voltage @ $T_C=125^\circ\text{C}$	$I_R$	5.0 100							uA uA
Maximum Reverse Recovery Time ( Note 1)	$T_{rr}$	150			250	500		nS	
Typical Junction Capacitance (Note 3)	$C_j$	70							pF
Typical Thermal Resistance $R_{\theta JC}$ (Note 2)	$R_{\theta JC}$	4.5							°C/W
Operating and Storage Temperature Range	$T_J, T_{STG}$	-65 to +150							°C

- Notes:
1. Reverse Recovery Test Conditions:  $I_F=0.5A$ ,  $I_R=1.0A$ ,  $I_{RR}=0.25A$ .
  2. Thermal Resistance from Junction to Case Per Leg Mounted on Heatsink Size 2" x 3" x 0.25" Al-Plate.
  3. Measured at 1MHz and Applied Reverse Voltage of 4.0 Volts D.C.

## RATINGS AND CHARACTERISTIC CURVES (FRAF1601G THRU FRAF1607G)

FIG.1- MAXIMUM FORWARD CURRENT DERATING CURVE

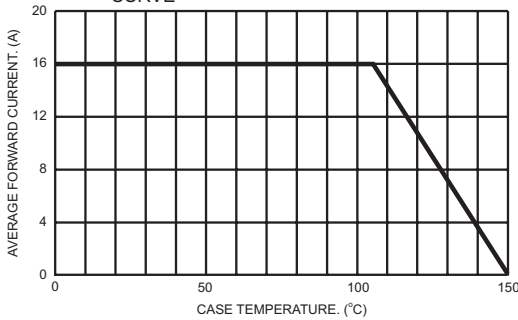


FIG.2- TYPICAL REVERSE CHARACTERISTICS PER LEG

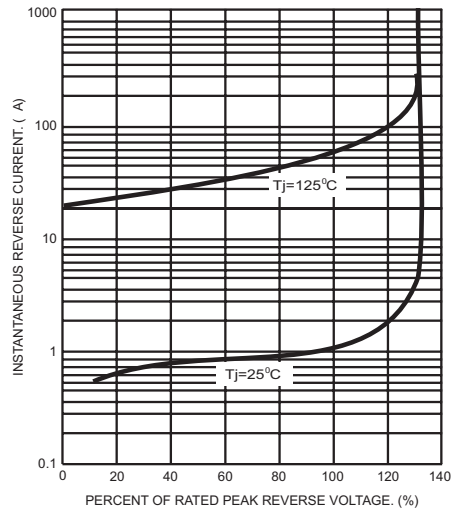


FIG.3- MAXIMUM NON-REPETITIVE FORWARD SURGE CURRENT

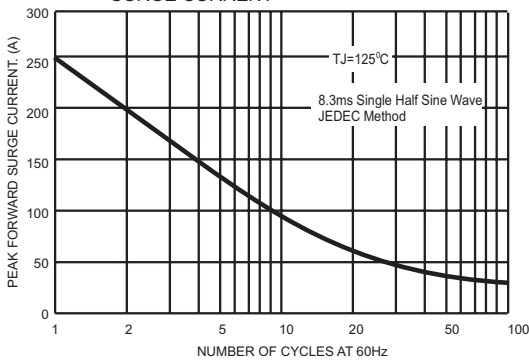


FIG.5- TYPICAL INSTANTANEOUS FORWARD CHARACTERISTICS PER LEG

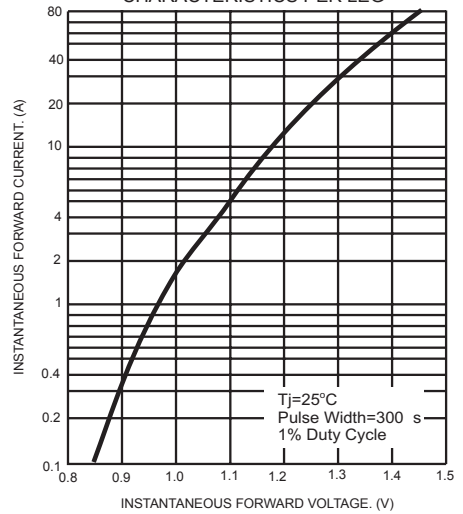


FIG.4- TYPICAL JUNCTION CAPACITANCE

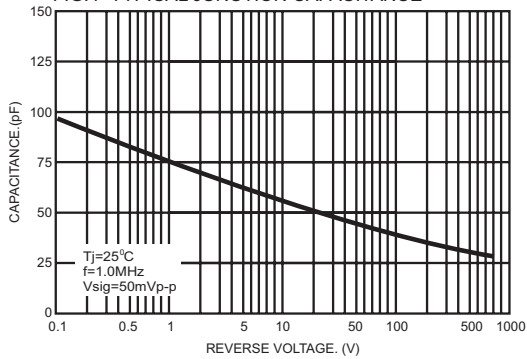
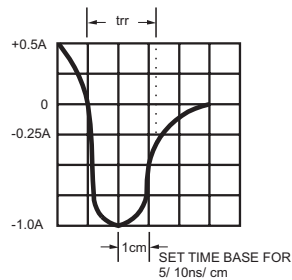
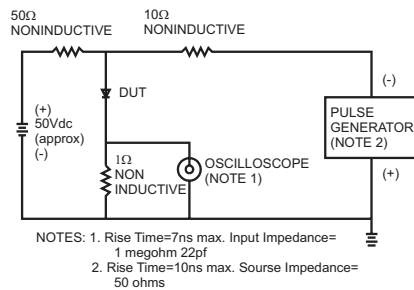


FIG.6- REVERSE RECOVERY TIME CHARACTERISTIC AND TEST CIRCUIT DIAGRAM



NOTES: 1. Rise Time=7ns max. Input Impedance= 1 megohm 22pf  
2. Rise Time=10ns max. Source Impedance= 50 ohms