

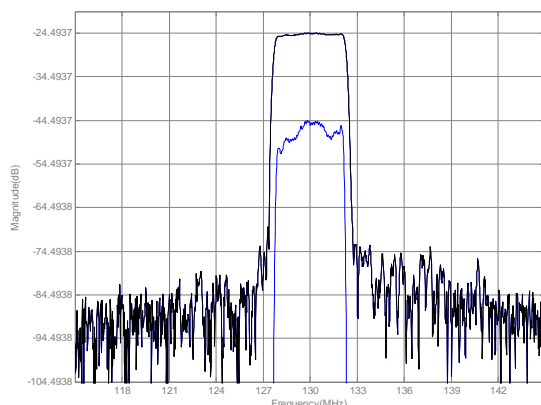


LBS13004 SAW Filter Electrical Characteristic

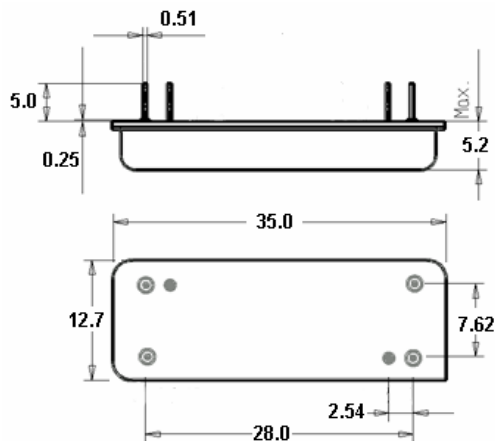
Specifications

| Parameter | Unit | Minimum | Typical | Maximum |
|------------------------------|------|---|---------|---------|
| Center Frequency | MHz | 129.95 | 130 | 130.05 |
| Insertion Loss | dB | - | 24.50 | 28 |
| 3 dB Bandwidth | MHz | 4.4 | 4.49 | - |
| 28 dB Bandwidth | MHz | - | 5.09 | 5.2 |
| 38 dB Bandwidth | MHz | - | 5.21 | 5.6 |
| 43 dB Bandwidth | MHz | - | 5.27 | 5.8 |
| Passband Variation | dB | - | 0.7 | 1.0 |
| Group Delay Variation | nesc | - | 80 | 180 |
| Absolute Delay | usec | - | 3.73 | - |
| Ultimate Rejection | dB | 45 | 50 | - |
| Substrate Material | | Quartz | | |
| Ambient Temperature | °C | 25 | | |
| Package Size | | DIP3512 (35.0x12.7x5.2mm ³) | | |

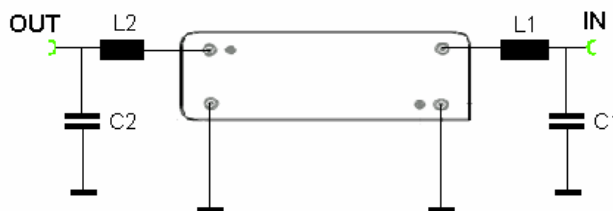
Typical Performance



Package Outline



Matching Configuration



$$L1 = 120\text{nH} \quad L2 = 100\text{nH}$$

$$C1 = C2 = 51\text{pF}$$

Source/Load Impedance = 50 ohm

Notes - Component values may change depending on board layout.