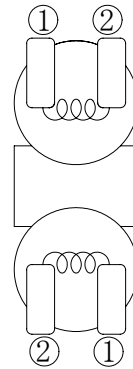
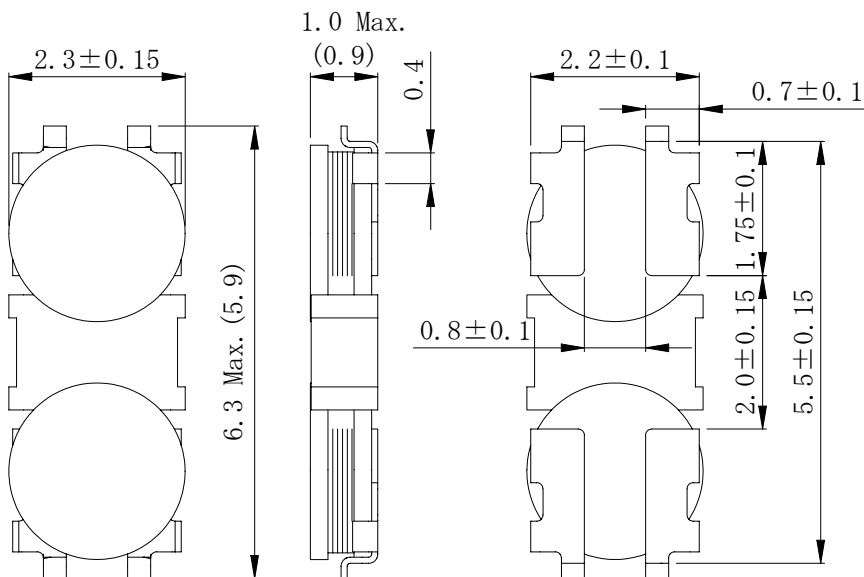
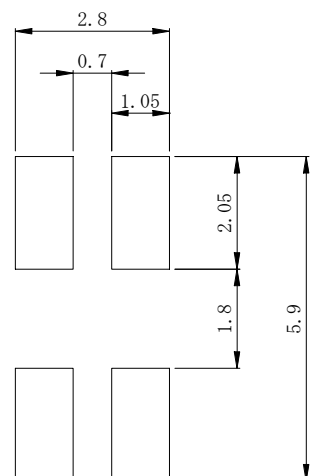


Type: WCDRH23D09/HP, WCDRH23D09
◆ Product Description

- 6.3×2.45mm Max.(L×W), 1.0mm Max. Height.
- Both High Power WCDRH23D09/HP and Standard type WCDRH23D09 are available.
- Inductance Range: 1.1~6.8μH (WCDRH23D09/HP) ;2.2~10μH (WCDRH23D09)
- Rated current range: 0.52~1.36A(WCDRH23D09/HP) ;0.36~0.84A(WCDRH23D09)
- Custom design is available.


◆ Feature

- Magnetically shielded construction.
- 2-in-1 package inductor for Apple iPod project.
- RoHS Compliance.

◆ Schematics (Bottom)

◆ Dimensions(mm)

◆ Land Pattern (mm)


Type: WCDRH23D09/HP, WCDRH23D09
◆ Specification (WCDRH23D09/HP)

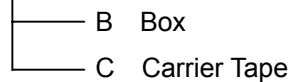
Part Name ※	Stamp	Inductance 100kHz/1V	D.C.R.(mΩ) (at 20°C)	Saturation Current (A) ※ 1	Temperature Rise Current (A)※2
WCDRH23D09HPNP-1R1N□	A	1.1 μH ± 30%	79 ± 25%	1.35	1.36
WCDRH23D09HPNP-1R5N□	B	1.5 μH ± 30%	92 ± 25%	1.15	1.18
WCDRH23D09HPNP-2R2N□	C	2.2 μH ± 30%	138 ± 20%	0.95	0.95
WCDRH23D09HPNP-3R3N□	D	3.3 μH ± 30%	200 ± 20%	0.75	0.74
WCDRH23D09HPNP-4R7N□	E	4.7 μH ± 30%	290 ± 20%	0.65	0.56
WCDRH23D09HPNP-6R8N□	F	6.8 μH ± 30%	375 ± 20%	0.55	0.52

◆ Specification (WCDRH23D09)

Part Name ※	Stamp	Inductance 100kHz/1V	D.C.R.(mΩ) (at 20°C)	Saturation Current (A) ※ 1	Temperature Rise Current (A)※2
WCDRH23D09NP-2R2N□	B	2.2 μH ± 30%	125 ± 20%	0.84	1.12
WCDRH23D09NP-3R3N□	D	3.3 μH ± 30%	155 ± 20%	0.64	0.84
WCDRH23D09NP-4R7N□	F	4.7 μH ± 30%	210 ± 20%	0.54	0.72
WCDRH23D09NP-6R8N□	H	6.8 μH ± 30%	275 ± 20%	0.44	0.60
WCDRH23D09NP-100N□	K	10 μH ± 30%	430 ± 20%	0.36	0.48

※ Description of part name

WCDRH23D09HPNP-1R1N□



※1. Saturation current: The DC current at which the inductance decreases to 65% of its nominal value.

 ※2. Temperature rise current: The DC current at which the temperature rise is $\Delta t = 40^\circ\text{C}$ ($T_a = 20^\circ\text{C}$).