

FEATURES

Tri-axis gyroscope with digital range scaling

$\pm 75, \pm 150, \pm 300^\circ/s$ settings
14-bit resolution

Tri-axis accelerometer

$\pm 10 g$ measurement range
14-bit resolution

350 Hz bandwidth

Factory calibrated sensitivity, bias, and alignment

ADIS16350: $+25^\circ\text{C}$, ADIS16355: -40°C to $+85^\circ\text{C}$

Digitally controlled bias calibration

Digitally controlled sample rate

Digitally controlled filtering

Programmable condition monitoring

Auxiliary digital input/output

Digitally activated self-test

Programmable power management

Embedded temperature sensor

SPI-compatible serial interface

Auxiliary 12-bit ADC input and DAC output

Single-supply operation: 4.75 V to 5.25 V

2000 g shock survivability

APPLICATIONS

Guidance and control

Platform control and stabilization

Motion control and analysis

Inertial measurement units

General navigation

Image stabilization

Robotics Functional Block Diagram

GENERAL DESCRIPTION

The ADIS16350/5 *iSensor*TM is a complete triple axis gyroscope and triple axis accelerometer inertial sensing system. This sensor combines the Analog Devices Inc. *iMEMS*[®] and mixed signal processing technology to produce a highly integrated solution, providing calibrated, digital inertial sensing. An SPI interface and simple output register structure allow for easy system interface and programming. The ADIS16355 provides calibration over a temperature range of -40°C to $+85^\circ\text{C}$.

The SPI port provides access to the following embedded sensors: X, Y, and Z axis angular rates; X, Y, and Z axis linear acceleration; internal temperature; power supply; and auxiliary analog input. The inertial sensors are precision aligned across axes, and are calibrated for offset and sensitivity. An embedded controller dynamically compensates for all major influences on

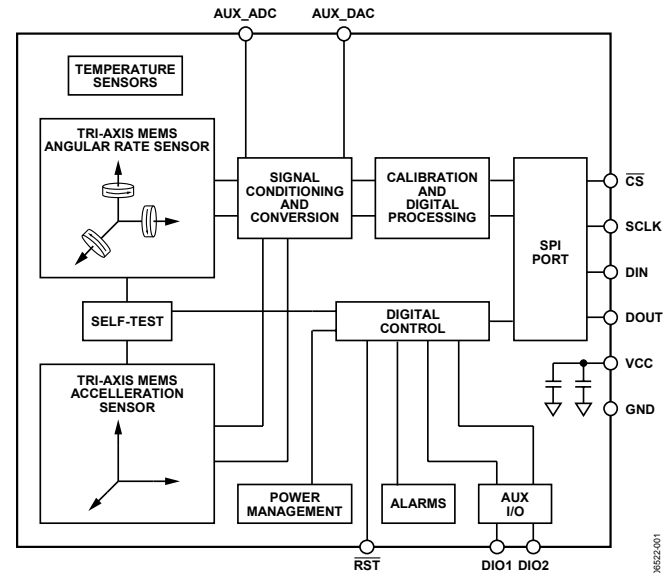


Figure 1.

the MEMS sensors; thus maintaining highly accurate sensor outputs without further testing, circuitry, or user intervention. System integration is simplified with the following additional programmable features:

- In-system auto bias calibration
- Digital filtering and sample rate
- Self test
- Power management
- Condition monitoring
- Auxiliary digital input/output

This compact module is approximately 23 mm \times 23 mm \times 23 mm and provides a convenient flex-based connector system.

Rev. PrG

Information furnished by Analog Devices is believed to be accurate and reliable. However, no responsibility is assumed by Analog Devices for its use, nor for any infringements of patents or other rights of third parties that may result from its use. Specifications subject to change without notice. No license is granted by implication or otherwise under any patent or patent rights of Analog Devices. Trademarks and registered trademarks are the property of their respective owners.

TABLE OF CONTENTS

| | | | |
|---|----|---|----|
| Features | 1 | Control Register Structure | 12 |
| Applications | 1 | Auxiliary ADC Function | 12 |
| Functional Block Diagram | 1 | Basic Operation | 13 |
| General Description | 1 | Serial Peripheral Interface (SPI) | 13 |
| Revision History | 2 | Data Output Register Access | 14 |
| Specifications | 3 | Programming and Control | 16 |
| Timing Specifications | 5 | Control Register Overview | 16 |
| Timing Diagrams | 5 | Control Register Structure | 16 |
| Absolute Maximum Ratings | 6 | Calibration | 17 |
| ESD Caution | 6 | Global Commands | 17 |
| Pin Configuration and Function Descriptions | 7 | Operational Control | 18 |
| Typical Performance Characteristics | 8 | Status and Diagnostics | 20 |
| Theory of Operation | 12 | Applications Information | 23 |
| Overview | 12 | Installation Guidelines | 23 |
| Gyroscope Sensor | 12 | Outline Dimensions | 25 |
| Accelerometer Sensor | 12 | Ordering Guide | 25 |
| Factory Calibration | 12 | | |

REVISION HISTORY

10/31—Revision PrG: Document performance, pending release

ADIS16355

SPECIFICATIONS

Table 1. $T_A = -40^{\circ}\text{C}$ to $+85^{\circ}\text{C}$, $V_{CC} = 5.0\text{ V}$, angular rate = $0^{\circ}/\text{s}$, dynamic range $300^{\circ}/\text{sec}$, $\pm 1\text{ g}$, unless otherwise noted

| Parameter | Conditions | Min | Typ | Max | Unit | | |
|----------------------------------|--|--|------------|------------|--|-------------------------------|-------------------------------|
| GYROSCOPE SENSITIVITY | Each axis 25°C, dynamic range = $\pm 300^{\circ}/\text{s}$ 25°C, dynamic range = $\pm 150^{\circ}/\text{s}$ 25°C, dynamic range = $\pm 75^{\circ}/\text{s}$ | 0.0725 | 0.07326 | 0.0740 | $^{\circ}/\text{s}/\text{LSB}$ | | |
| | | | 0.03663 | | $^{\circ}/\text{s}/\text{LSB}$ | | |
| | | | 0.01832 | | $^{\circ}/\text{s}/\text{LSB}$ | | |
| | Temperature Coefficient | ADIS16350, See Figure 5 | | 600 | | $\text{ppm}/^{\circ}\text{C}$ | |
| | | ADIS16355, See TBD | | 40 | | $\text{ppm}/^{\circ}\text{C}$ | |
| | Gyro Axis Nonorthogonality | 25°C, difference from 90° ideal | | ± 0.05 | | Degree | |
| Gyro Axis Misalignment | 25°C, relative to base -plate and guide pins | | ± 0.5 | | Degree | | |
| Nonlinearity | Best fit straight line | | 0.1 | | % of FS | | |
| GYROSCOPE BIAS | | | | | | | |
| In Run Bias Stability | 25°C, 1σ | | 0.015 | | $^{\circ}/\text{s}$ | | |
| Angular Random Walk | 25°C | | 4.2 | | $^{\circ}/\sqrt{\text{hr}}$ | | |
| Temperature Coefficient | ADIS16350, See Figure 6 | | 0.1 | | $^{\circ}/\text{s}/^{\circ}\text{C}$ | | |
| | ADIS16355, See | | 0.01 | | $^{\circ}/\text{s}/^{\circ}\text{C}$ | | |
| Linear Acceleration Effect | Any axis, 1σ , (linear acceleration bias compensation enabled) | | 0.05 | | $^{\circ}/\text{s}/\text{g}$ | | |
| Voltage Sensitivity | $V_{CC} = 4.75\text{ V}$ to 5.25 V | | 0.25 | | $^{\circ}/\text{s}/\text{V}$ | | |
| GYROSCOPE NOISE PERFORMANCE | | | | | | | |
| Output Noise | 25°C, $\pm 300^{\circ}/\text{s}$ range, no filtering | | 0.60 | | $^{\circ}/\text{s}$ rms | | |
| | 25°C, $\pm 150^{\circ}/\text{s}$ range, 4-tap filter setting | | 0.35 | | $^{\circ}/\text{s}$ rms | | |
| | 25°C, $\pm 75^{\circ}/\text{s}$ range, 16-tap filter setting | | 0.17 | | $^{\circ}/\text{s}$ rms | | |
| Rate Noise Density | 25°C, $f = 25\text{ Hz}$, $\pm 300^{\circ}/\text{s}$, no filtering | | 0.05 | | $^{\circ}/\text{s}/\sqrt{\text{Hz}}$ rms | | |
| GYROSCOPE FREQUENCY RESPONSE | | | | | | | |
| 3 dB Bandwidth | | | 350 | | Hz | | |
| Sensor Resonant Frequency | | | 14 | | kHz | | |
| GYROSCOPE SELF-TEST STATE | | | | | | | |
| Change for Positive Stimulus | $\pm 300^{\circ}/\text{s}$ range setting | 432 | 723 | 1105 | LSB | | |
| Change for Negative Stimulus | $\pm 300^{\circ}/\text{s}$ range setting | -432 | -723 | -1105 | LSB | | |
| Internal Self-Test Cycle Time | | | 25 | | ms | | |
| ACCELEROMETER SENSITIVITY | | | | | | | |
| Dynamic Range | Each axis 25°C | 2.471 | ± 8 | ± 10 | 2.572 | g | |
| | | | 2.471 | 2.522 | | 2.572 | mg/LSB |
| | | | | 100 | | | $\text{ppm}/^{\circ}\text{C}$ |
| Temperature Coefficient | ADIS16350 | | 40 | | $\text{ppm}/^{\circ}\text{C}$ | | |
| Axis Nonorthogonality | 25°C, difference from 90° ideal | | ± 0.25 | | Degree | | |
| Axis Misalignment | 25°C, relative to base-plate and guide pins | | ± 0.5 | | Degree | | |
| Nonlinearity | Best fit straight line | | ± 0.2 | | % of FS | | |
| ACCELEROMETER BIAS | | | | | | | |
| In-Run Bias Stability | 25°C, 1σ | | 0.7 | | mg | | |
| Velocity Random Walk | 25°C | | 2.0 | | $\text{m}/\text{s}/\sqrt{\text{hr}}$ | | |
| Temperature Coefficient | ADIS16350 | | 4 | | $\text{mg}/^{\circ}\text{C}$ | | |
| | ADIS16355 | | 0.5 | | $\text{mg}/^{\circ}\text{C}$ | | |
| ACCELEROMETER NOISE PERFORMANCE | | | | | | | |
| Output Noise | 25°C, no filtering | | 35 | | mg rms | | |
| Noise Density | 25°C, no filtering | | 1.85 | | $\text{mg}/\sqrt{\text{Hz}}$ rms | | |
| ACCELEROMETER FREQUENCY RESPONSE | | | | | | | |
| 3 dB Bandwidth | | | 350 | | Hz | | |
| Sensor Resonant Frequency | | | 10 | | kHz | | |
| ACCELEROMETER SELF-TEST STATE | | | | | | | |
| Output Change When Active | | 73 | 146 | 219 | LSB | | |

| Parameter | Conditions | Min | Typ | Max | Unit |
|--|---|--------|----------|------|--------|
| TEMPERATURE SENSOR | | | | | |
| Output at 25°C | | | 0 | | LSB |
| Scale Factor | | | 6.88 | | LSB/°C |
| ADC INPUT | | | | | |
| Resolution | | | 12 | | Bits |
| Integral Nonlinearity | | | ±2 | | LSB |
| Differential Nonlinearity | | | ±1 | | LSB |
| Offset Error | | | ±4 | | LSB |
| Gain Error | | | ±2 | | LSB |
| Input Range | | 0 | | 2.5 | V |
| Input Capacitance | During acquisition | | 20 | | pF |
| DAC OUTPUT | 5 kΩ/100 pF to GND | | | | |
| Resolution | | | 12 | | Bits |
| Relative Accuracy | For Code 101 to Code 4095 | | ±4 | | LSB |
| Differential Nonlinearity | | | ±1 | | LSB |
| Offset Error | | | ±5 | | mV |
| Gain Error | | | ±0.5 | | % |
| Output Range | | | 0 to 2.5 | | V |
| Output Impedance | | | 2 | | Ω |
| Output Settling Time | | | 10 | | μs |
| LOGIC INPUTS | | | | | |
| Input High Voltage, V _{INH} | | 2.0 | | | V |
| Input Low Voltage, V _{INL} | | | | 0.8 | V |
| | For –CS signal when used to wake up from sleep mode | | | 0.55 | V |
| Logic 1 Input Current, I _{INH} | V _{IH} = 3.3 V | | ±0.2 | ±10 | μA |
| Logic 0 Input Current, I _{INL} | V _{IL} = 0 V | | | | |
| All except RST | | | –40 | –60 | μA |
| RST | | | –1 | | mA |
| Input Capacitance, C _{IN} | | | 10 | | pF |
| DIGITAL OUTPUTS | | | | | |
| Output High Voltage, V _{OH} | I _{SOURCE} = 1.6 mA | 2.4 | | | V |
| Output Low Voltage, V _{OL} | I _{SINK} = 1.6 mA | | | 0.4 | V |
| SLEEP TIMER | | | | | |
| Timeout Period ¹ | | 0.5 | | 128 | Sec |
| FLASH MEMORY | | | | | |
| Endurance ² | | 10,000 | | | Cycles |
| Data Retention ³ | T _J = 85°C | 20 | | | Years |
| CONVERSION RATE | | | | | |
| Maximum Sample Rate | SMPL_PRD = 0x01 | | 819.2 | | SPS |
| Minimum Sample Rate | SPML_PRD = 0xFF | | 0.413 | | SPS |
| START-UP TIME ⁴ | | | | | |
| Initial Power Up | | | 150 | | ms |
| Sleep Mode Recovery | | | 3 | | ms |
| POWER SUPPLY | | | | | |
| Operating Voltage Range, V _{CC} | | 4.75 | 5.0 | 5.25 | V |
| Power Supply Current | Normal mode at 25°C | | 33 | | mA |
| | Fast mode at 25°C | | 57 | | mA |
| | Sleep mode at 25°C | | 500 | | μA |

¹ Guaranteed by design

² Endurance is qualified as per JEDEC Standard 22 Method A117 and measured at –40°C, +25°C, +85°C, and +125°C.

³ Retention lifetime equivalent at junction temperature (T_J) 85°C as per JEDEC Standard 22 Method A117. Retention lifetime decreases with junction temperature.

⁴ This is defined as the time from wake-up to the first conversion. This time does not include sensor settling time, which is dependent on the filter settings

TIMING SPECIFICATIONS

T_A = 25°C, V_{CC} = 5.0 V, angular rate = 0°/s, unless otherwise noted.

Table 2.

| Parameter | Description | Min ¹ | Typ | Max ¹ | Unit |
|------------------------|--|------------------|-----|------------------|------------|
| f _{SCLK} | Fast mode, SMPL_PRD ≤ 0x09 (f _s ≥ 164 Hz) Normal mode, SMPL_PRD ≥ 0x0A (f _s ≤ 149 Hz) | 0.01 10 | | 2 300 | MHz kHz |
| t _{DATARATE} | Data rate time, fast mode, SMPL_PRD ≤ 0x09 (f _s ≥ 164 Hz) | 40 | | | μs |
| | Data rate time, normal mode, SMPL_PRD ≥ 0x0A (f _s ≤ 149 Hz) | 160 | | | μs |
| t _{DATASTALL} | Data stall time, fast mode SMPL_PRD ≤ 0x09 (f _s ≥ 164 Hz) | 9 | | | μs |
| | Data stall time, normal mode SMPL_PRD ≥ 0x0A (f _s ≤ 149 Hz) | 75 | | | μs |
| t _{CS} | Chip select to clock edge | 48.8 | | | ns |
| t _{DAV} | Data output valid after SCLK falling edge ² | | | 100 | ns |
| t _{DSU} | Data input setup time before SCLK rising edge | 24.4 | | | ns |
| t _{DHD} | Data input hold time after SCLK rising edge | 48.8 | | | ns |
| t _{DF} | Data output fall time | | 5 | 12.5 | ns |
| t _{DR} | Data output rise time | | 5 | 12.5 | ns |
| t _{SFS} | \overline{CS} high after SCLK edge ³ | 5 | | | ns |

¹ Guaranteed by design, not production tested.

² The MSB presents an exception to this parameter. The MSB clocks out on the falling edge of \overline{CS} . The rest of the DOUT bits are clocked after the falling edge of SCLK and are governed by this specification.

³ This parameter may need to be expanded to allow for proper capture of the LSB. After \overline{CS} goes high, the DOUT line goes into a high impedance state.

TIMING DIAGRAMS

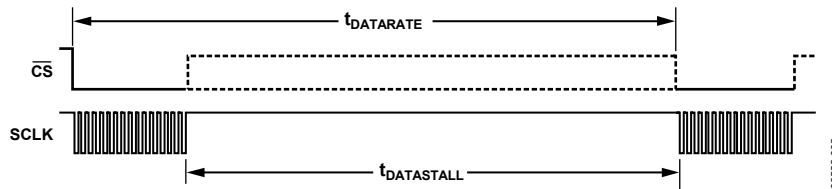


Figure 2. SPI Chip Select Timing

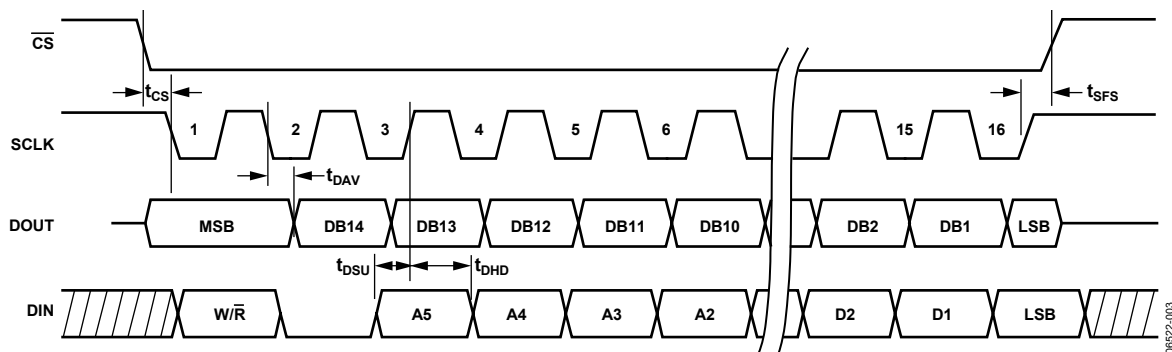


Figure 3. SPI Timing, Utilizing SPI Settings Typically Identified as Phase = 1, Polarity = 1

ABSOLUTE MAXIMUM RATINGS

Table 3.

| Parameter | Rating |
|-------------------------------------|---------------------------------|
| Acceleration | |
| Any Axis, Unpowered | 2000 <i>g</i> |
| Any Axis, Powered | 2000 <i>g</i> |
| VCC to COM | −0.3 V to +6.0 V |
| Digital Input/Output Voltage to COM | −0.3 V to +5.3 V |
| Analog Inputs to COM | −0.3 V to 3.6 V |
| Operating Temperature Range | −40°C to +85°C |
| Storage Temperature Range | −65°C to +125°C ^{1, 2} |

¹ Extended exposure to temperatures outside of the specified temperature range of −40°C to +85°C can adversely affect the accuracy of the factory calibration. For best accuracy, store the parts within the specified operating range of −40°C to +85°C.

² Although the device is capable of withstanding short-term exposure to +150°C, long-term exposure threatens internal mechanical integrity.

Stresses above those listed under Absolute Maximum Ratings may cause permanent damage to the device. This is a stress rating only; functional operation of the device at these or any other conditions above those indicated in the operational section of this specification is not implied. Exposure to absolute maximum rating conditions for extended periods may affect device reliability.

Table 4. Package Characteristics

| Package Type | θ_{JA} | θ_{JC} | Device Weight |
|----------------|---------------|---------------|---------------|
| 24-Lead Module | 39.8°C/W | 14.2°C/W | 16 grams |

ESD CAUTION



ESD (electrostatic discharge) sensitive device. Charged devices and circuit boards can discharge without detection. Although this product features patented or proprietary protection circuitry, damage may occur on devices subjected to high energy ESD. Therefore, proper ESD precautions should be taken to avoid performance degradation or loss of functionality.

PIN CONFIGURATION AND FUNCTION DESCRIPTIONS

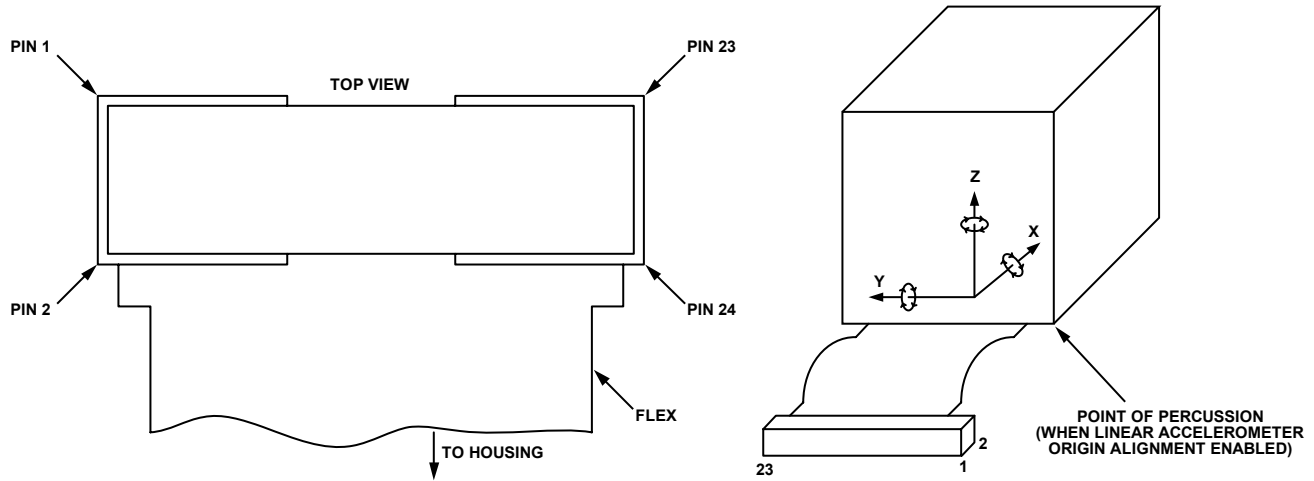


Figure 4. Pin Configuration, Connector Top View

Table 5. Pin Function Descriptions

| Pin No. | Mnemonic | Type ¹ | Description |
|---------|------------------|-------------------|-------------------------------|
| 1 | DNC | N/A | Do not connect |
| 2 | DNC | N/A | Do not connect |
| 3 | SCLK | I | SPI serial clock |
| 4 | DOUT | O | SPI data output |
| 5 | DIN | I | SPI data input |
| 6 | \overline{CS} | I | SPI chip select |
| 7 | DIO1 | I/O | Digital input/output |
| 8 | \overline{RST} | I | Reset |
| 9 | DIO2 | I/O | Digital input/output |
| 10 | VCC | S | Power supply |
| 11 | VCC | S | Power supply |
| 12 | VCC | S | Power supply |
| 13 | GND | S | Power ground |
| 14 | GND | S | Power ground |
| 15 | GND | S | Power ground |
| 16 | DNC | N/A | Do not connect |
| 17 | DNC | N/A | Do not connect |
| 18 | DNC | N/A | Do not connect |
| 19 | DNC | N/A | Do not connect |
| 20 | AUX_DAC | O | Auxiliary, 12-bit, DAC output |
| 21 | AUX_ADC | I | Auxiliary, 12-bit, ADC input |
| 22 | DNC | N/A | Do not connect |
| 23 | DNC | N/A | Do not connect |
| 24 | DNC | N/A | Do not connect |

¹ S = supply, O = output, I = input.

TYPICAL PERFORMANCE CHARACTERISTICS

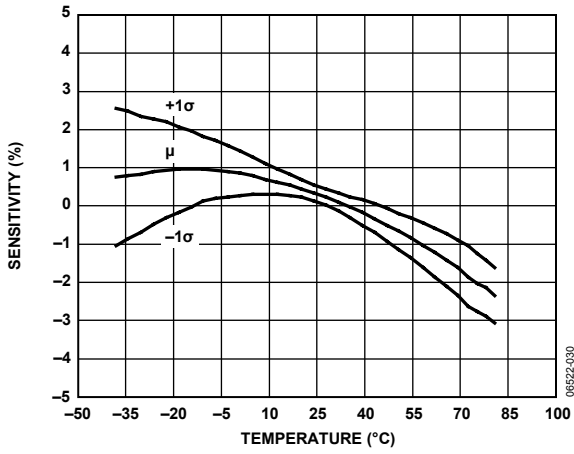


Figure 5. ADIS16350 Gyroscope Sensitivity vs. Temperature

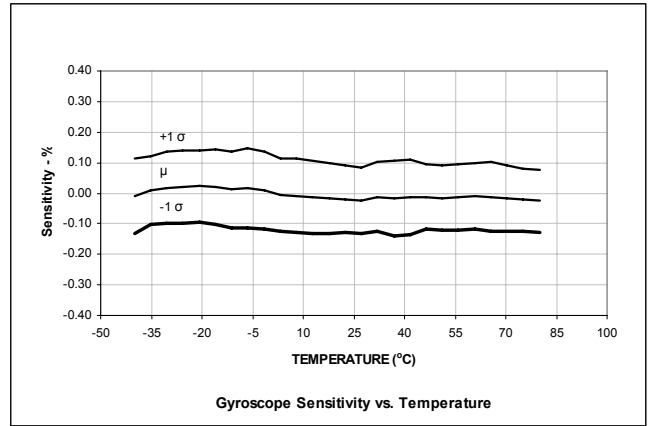


Figure 8. ADIS16355 Gyroscope Sensitivity vs. Temperature

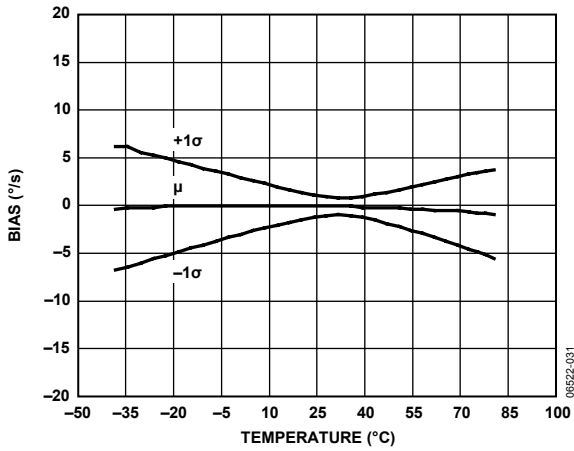


Figure 6. ADIS16350 Gyroscope Bias vs. Temperature

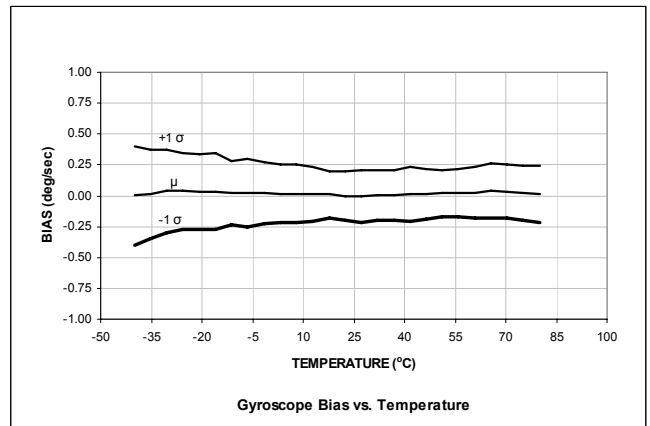


Figure 9. ADIS16350 Gyroscope Bias vs. Temperature

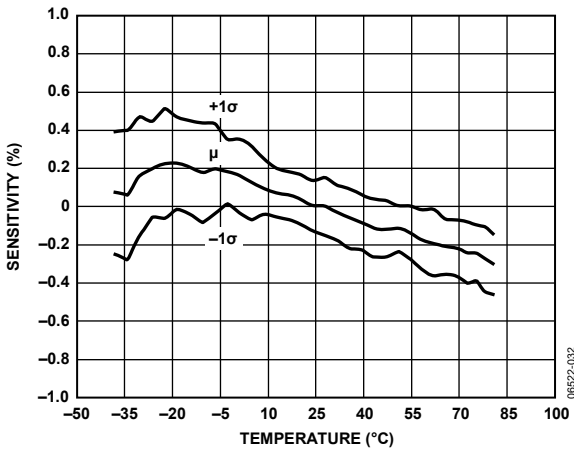


Figure 7. ADIS16350 Accelerometer Sensitivity vs. Temperature

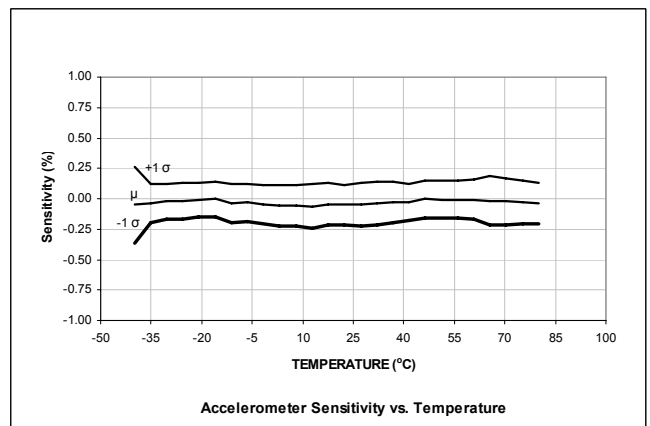


Figure 10. ADIS16350 Accelerometer Sensitivity vs. Temperature

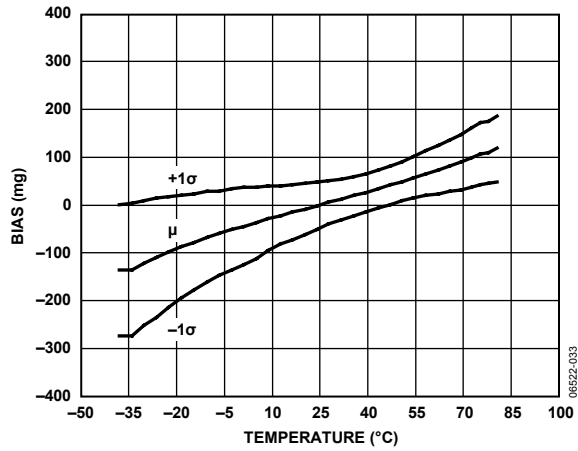


Figure 11. ADIS16350 Accelerometer Bias vs. Temperature

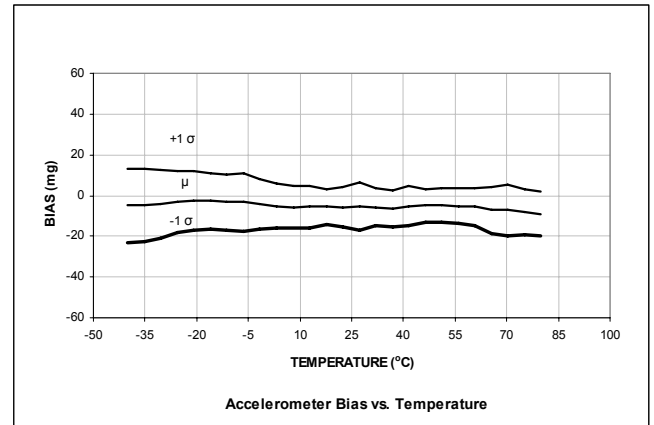


Figure 14. ADIS16350 Accelerometer Bias vs. Temperature

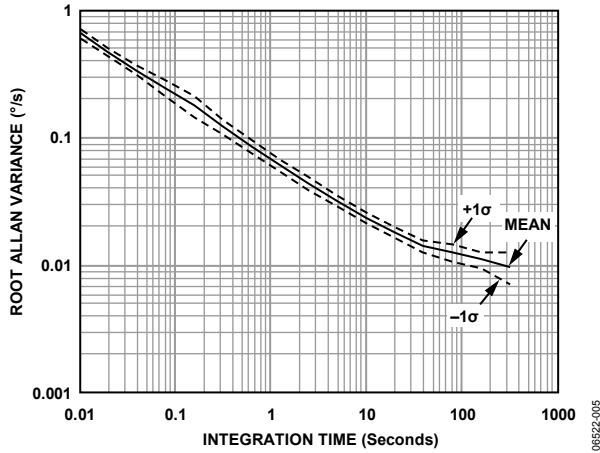


Figure 12. Gyroscope Root Allan Variance

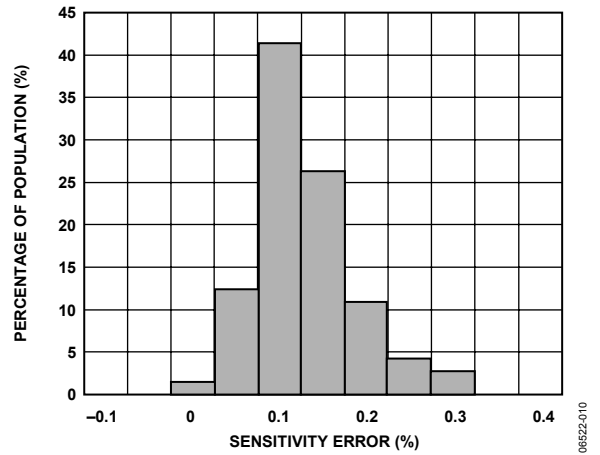


Figure 15. Gyroscope Sensitivity Error, +25°C

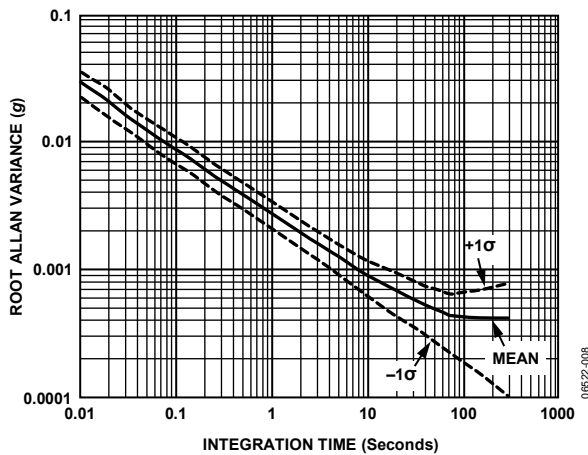


Figure 13. Accelerometer Root Allan Variance

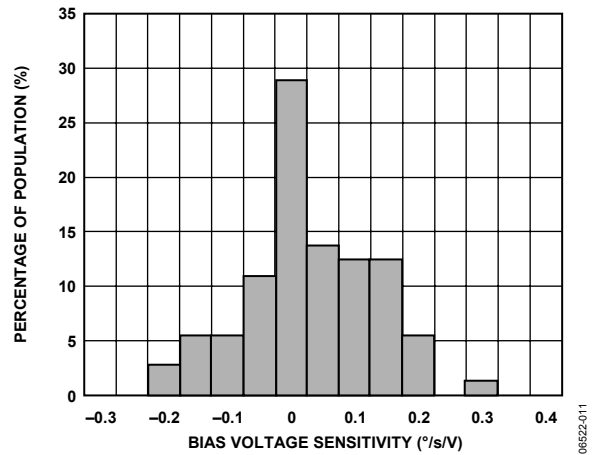


Figure 16. Gyroscope Bias Voltage Power Supply Sensitivity, +25°C

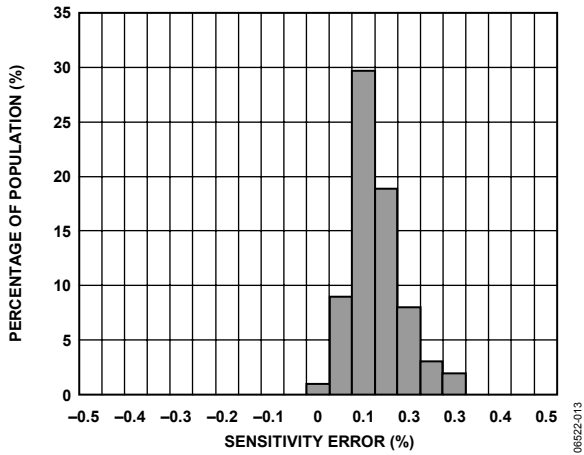


Figure 17. Accelerometer Sensitivity Error Distribution, +25°C

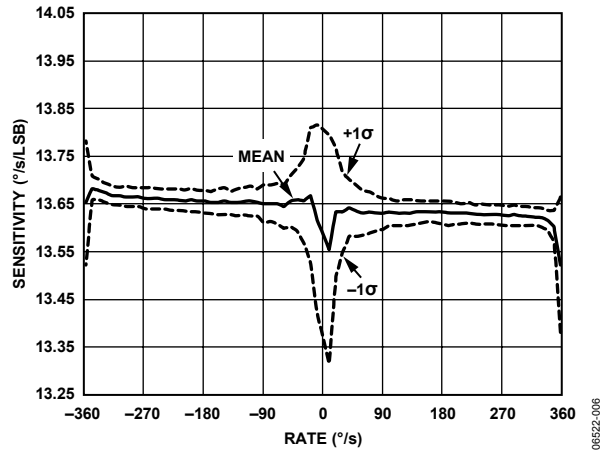


Figure 20. Gyroscope Linearity

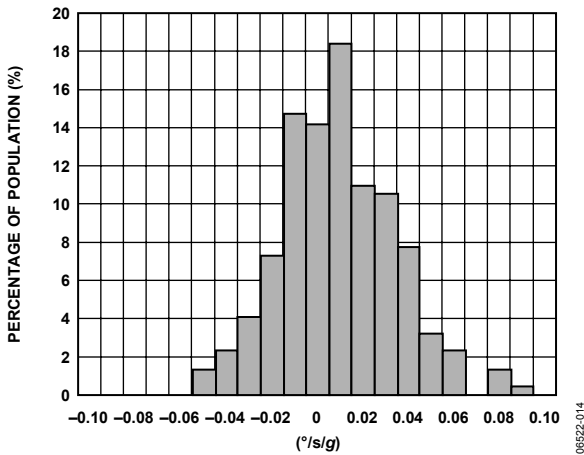


Figure 18. Gyroscope Bias Sensitivity to Linear Acceleration, +25°C

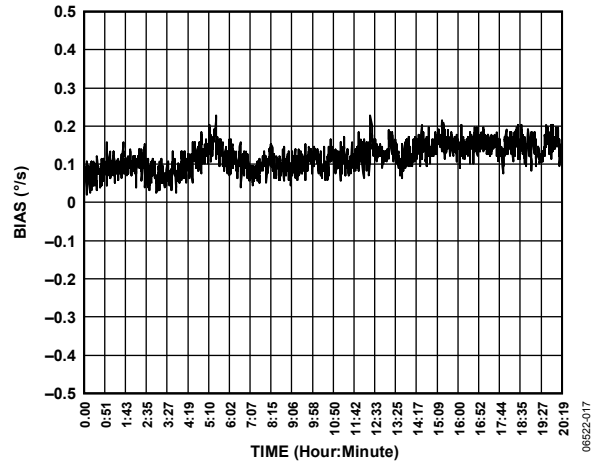


Figure 21. Long-Term Bias Stability, +25°C

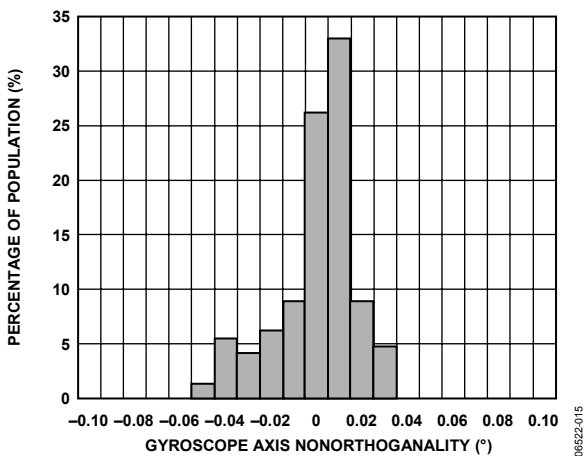


Figure 19. Gyroscope Alignment Distribution, +25°C

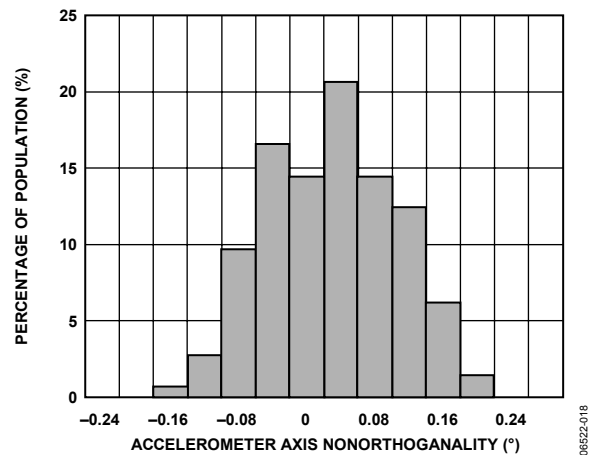


Figure 22. Accelerometer Alignment Distribution, +25°C

Figure 23. Normal Mode Power Supply Current Distribution, +25°C

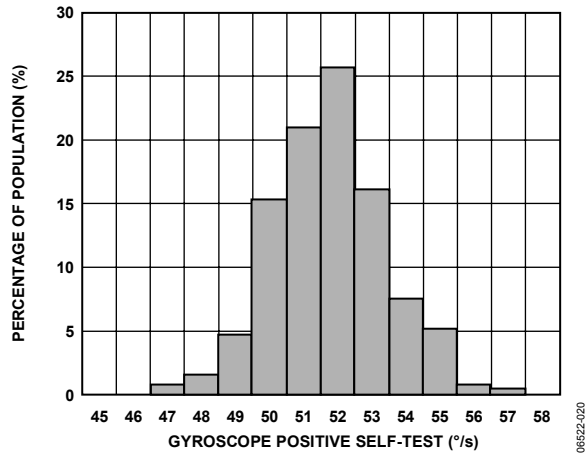


Figure 24. Gyroscope Positive Self-Test Distribution, +25°C

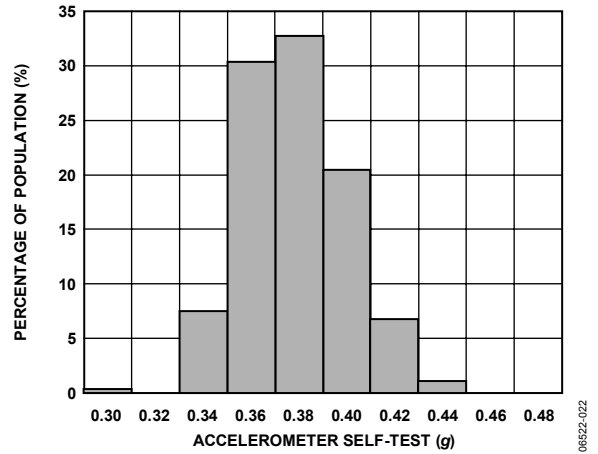


Figure 26. Accelerometer Self-Test Distribution, +25°C

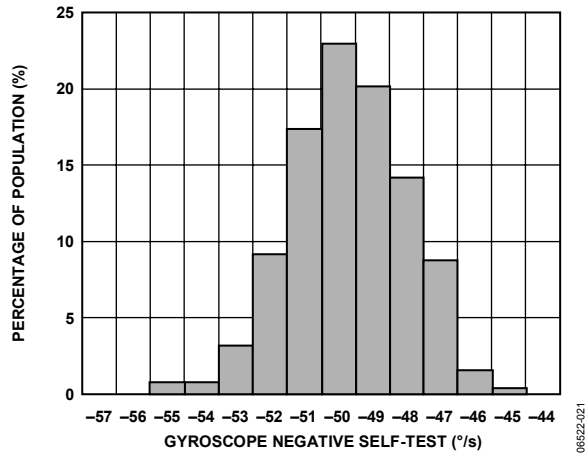


Figure 25 Gyroscope Negative Self-Test Distribution, +25°C

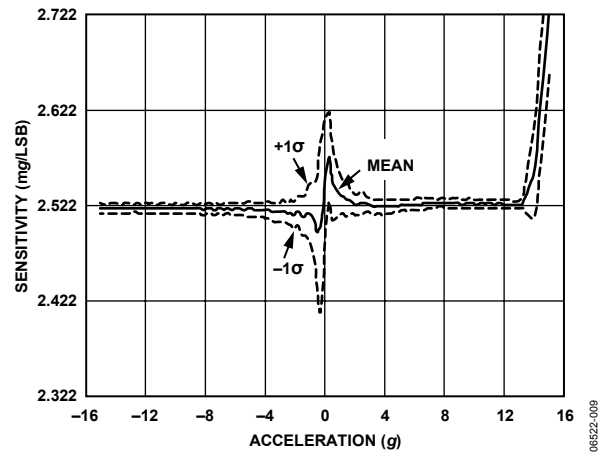


Figure 27. Accelerometer Linearity

THEORY OF OPERATION

OVERVIEW

The ADIS16350 integrates three orthogonal axes of gyroscope sensors with three orthogonal axes of accelerometer sensors, creating the basic six degrees of freedom (6DOF) in a single package. The accelerometers are oriented along the axis of rotation for each gyroscope. These six sensing elements are held together by a mechanical structure that provides tight force and motion coupling. Each sensor's output signal is sampled using an ADC, and then the digital data is fed into a proprietary digital processing circuit. The digital processing circuit applies the correction tables to each sensor's output, manages the input/output function using a simple register structure and serial interface, and provides many other features that simplify system-level designs.

GYROSCOPE SENSOR

The core angular rate sensor (gyroscope) used in the ADIS16350 operates on the principle of a resonator gyroscope. Two polysilicon sensing structures each contain a dither frame, which is electrostatically driven to resonance. This provides the necessary velocity element to produce a Coriolis force during rotation. At two of the outer extremes of each frame, orthogonal to the dither motion, are movable fingers placed between fixed fingers to form a capacitive pickoff structure that senses Coriolis motion. The resulting signal is fed to a series of gain and demodulation stages that produce the electrical rate signal output.

ACCELEROMETER SENSOR

The core acceleration sensor used in the ADIS16350 is a surface micromachined polysilicon structure built on top of the silicon wafer. Polysilicon springs suspend the structure over the surface of the wafer and provide a resistance against acceleration forces. Deflection of the structure is measured using a differential capacitor that consists of independent fixed plates and central plates attached to the moving mass. Acceleration deflects the beam and unbalances the differential capacitor, resulting in a differential output that is fed to a series of gain and demodulation stages that produce the electrical rate signal output.

FACTORY CALIBRATION

The ADIS16350 provides a factory calibration that simplifies the process of integrating it into system level designs. This calibration provides correction for initial sensor bias and sensitivity, power supply variation, axial alignment, and linear acceleration (gyroscopes). An extensive, three-dimensional characterization, provides the basis for generating correction tables for each individual sensor. The ADIS16355 provides the same calibration, over temperature.

CONTROL REGISTER STRUCTURE

The ADIS16350 provides configuration control to many critical operating parameters by using a dual-memory register structure. The volatile SRAM register locations control operation of the part while the nonvolatile flash memory locations preserve the configuration settings. Updating a register's contents only affects its SRAM location. Preserving the updates in its corresponding flash memory location requires initiation of the flash update command. This helps reduce the number of write cycles to the flash memory and consequently increases the endurance of the flash memory. During startup and reset-recovery sequences, the flash memory contents are automatically loaded into the SRAM register locations.

AUXILIARY ADC FUNCTION

The auxiliary ADC function integrates a standard 12-bit ADC into the ADIS16350 to digitize other system-level analog signals. The output of the ADC can be monitored through the AUX_ADC register, as defined in Table 7. The ADC is a 12-bit successive approximation converter. The output data is presented in straight binary format with the full-scale range extending from 0 V to 2.5 V.

Figure 28 shows the equivalent circuit of the analog input structure of the ADC. The input capacitor (C1) is typically 4 pF and can be attributed to parasitic package capacitance. The two diodes provide ESD protection for the analog input. Care must be taken to ensure that the analog input signals are never outside the range of -0.3 V to $+3.5$ V. This causes the diodes to become forward-biased and to start conducting. The diodes can handle 10 mA without causing irreversible damage. The resistor is a lumped component that represents the on resistance of the switches. The value of this resistance is typically 100 Ω . Capacitor C2 represents the ADC sampling capacitor and is typically 16 pF.

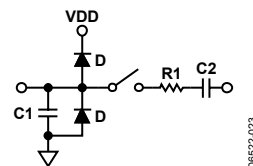


Figure 28. Equivalent Analog Input Circuit
Conversion Phase: Switch Open
Track Phase: Switch Closed

For ac applications, removing high frequency components from the analog input signal is recommended by the use of a low-pass filter on the analog input pin.

In applications where harmonic distortion and signal-to-noise ratios are critical, the analog input must be driven from a low impedance source. Large source impedances significantly affect the ac performance of the ADC. This can necessitate the use of an input buffer amplifier. When no input amplifier is used to drive the analog input, the source impedance should be limited to values lower than 1 k Ω .

BASIC OPERATION

The ADIS16350 is designed for simple integration into system designs, requiring only a 5.0 V power supply and a four-wire, industry standard serial peripheral interface (SPI). All outputs and user-programmable functions are handled by a simple register structure. Each register is 16 bits in length and has its own unique bit map. The 16 bits in each register consist of an upper byte (D8 to D15) and a lower byte (D0 to D7), each with its own 6-bit address.

SERIAL PERIPHERAL INTERFACE (SPI)

The ADIS16350 serial peripheral interface (SPI) port includes four signals: chip select (\overline{CS}), serial clock (SCLK), data input (DIN), and data output (DOUT). The \overline{CS} line enables the ADIS16350 SPI port and frames each SPI event. When this signal is high, the DOUT line is in a high impedance state and the signals on DIN and SCLK have no impact on operation. A complete data frame contains 16 clock cycles. Because the SPI port operates in full duplex mode, it supports simultaneous, 16-bit receive (DIN) and transmit (DOUT) functions during the same data frame. This enables one to configure the next read cycle, while at the same time, receiving the data associated with the previous configuration.

Refer to Table 2, Figure 2, and Figure 3 for detailed information regarding timing and operation of the SPI port.

Writing to Registers

Figure 29 displays a typical data frame for writing a command to a control register. In this case, the first bit of the DIN sequence is a 1, followed by a 0, the 6-bit address of the target register, and the 8-bit data command. Because each write command covers a single byte of data, two data frames are required when writing the entire 16-bit space of a register.

Reading from Registers

Reading the contents of a register requires a modification to the sequence illustrated in Figure 29. In this case, the first two bits in the DIN sequence are 0, followed by the address of the register. Each register has two addresses (an upper address and a lower address), but either one can be used to access the entire 16 bits of data. The final 8 bits of the DIN sequence are irrelevant and can be counted as “don’t cares” during a read command. During the next data frame, the DOUT sequence contains the register’s 16-bit data, as shown in Figure 30. Although a single read command requires two separate data frames, the full duplex mode minimizes this overhead, requiring only one extra data frame when continuously sampling.

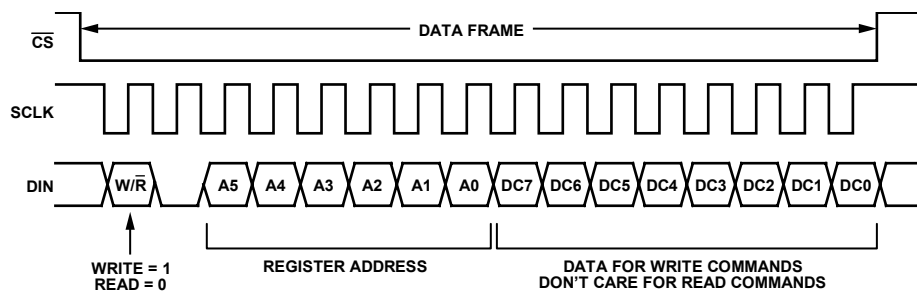


Figure 29. DIN Bit Sequence

08522-024

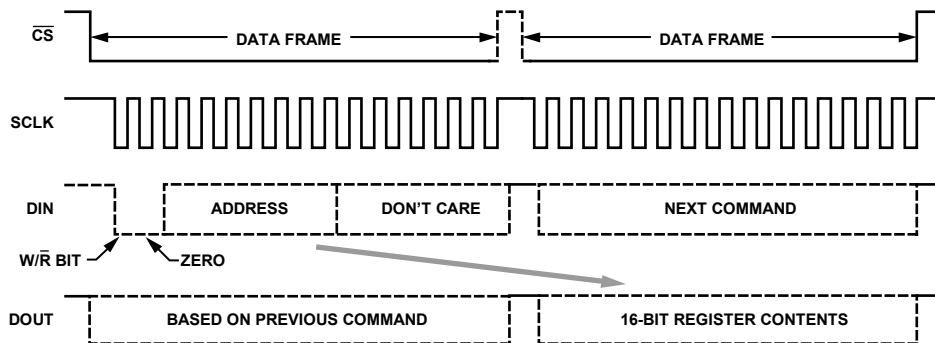


Figure 30. SPI Sequence for Read Commands

08522-025

DATA OUTPUT REGISTER ACCESS

The ADIS16350 provides access to a full 6DOF set of calibrated motion measurements, power supply measurements, temperature measurements, and an auxiliary 12-bit ADC channel. This output data is continuously updating internally, regardless of user read rates. Table 6 describes the structure of all ADIS16350 output data registers.

Table 6. Output Register Bit Map

| | | | | | | | |
|------------|----|-----|-----|------------|-----|----|----|
| MSB | | | | LSB | | | |
| ND | EA | D13 | D12 | D11 | D10 | D9 | D8 |
| D7 | D6 | D5 | D4 | D3 | D2 | D1 | D0 |

The MSB holds the new data (ND) indicator. When the output registers are updated with new data, the ND bit goes to a 1 state. After the output data is read, it returns to a 0 state. The EA bit

indicates a system error or an alarm condition that can result from various conditions, such as a power supply out of range condition. See the Status and Diagnostics section for more details. The output data is either 12 bits or 14 bits in length. For the 12-bit output data, Bit D13 and Bit D12 are assigned “don’t-care” status.

The output data register map is located in Table 7 and provides all of the necessary details for accessing each register’s data. Table 8 displays the output coding for the gyroscope output registers and Table 9 provides output coding for the acceleration registers. Figure 31 provides an example of an SPI read cycle for the XGYRO_OUT register.

Table 7. Data Output Register Information

| Name | Function | Addresses | Data Length | Data Format | Scale Factor (per LSB) |
|------------------------|---|------------|-------------|-----------------|--------------------------|
| SUPPLY_OUT | Power Supply Measurement | 0x03, 0x02 | 12 bits | Binary | 1.8315 mV |
| XGYRO_OUT | X-axis Gyroscope Output Measurement | 0x05, 0x04 | 14 bits | Twos Complement | 0.07326 °/s ¹ |
| YGYRO_OUT | Y-axis Gyroscope Output Measurement | 0x07, 0x06 | 14 bits | Twos Complement | 0.07326 °/s ¹ |
| ZGYRO_OUT | Z-axis Gyroscope Output Measurement | 0x09, 0x08 | 14 bits | Twos Complement | 0.07326 °/s ¹ |
| XACCL_OUT | X-axis Acceleration Output Measurement | 0x0B, 0x0A | 14 bits | Twos Complement | 2.522 mg |
| YACCL_OUT | Y-axis Acceleration Output Measurement | 0x0D, 0x0C | 14 bits | Twos Complement | 2.522 mg |
| ZACCL_OUT | Z-axis Acceleration Output Measurement | 0x0F, 0x0E | 14 bits | Twos Complement | 2.522 mg |
| XTEMP_OUT ² | X-axis Gyroscope Sensor Temperature Measurement | 0x11, 0x10 | 12 bits | Twos Complement | 0.1453°C |
| YTEMP_OUT ² | Y-axis Gyroscope Sensor Temperature Measurement | 0x13, 0x12 | 12 bits | Twos Complement | 0.1453°C |
| ZTEMP_OUT ² | Z-axis Gyroscope Sensor Temperature Measurement | 0x15, 0x14 | 12 bits | Twos Complement | 0.1453°C |
| AUX_ADC | Auxiliary Analog Input Data | 0x17, 0x16 | 12 bits | Binary | 0.6105 mV |

¹ Assumes that the scaling is set to 300°/s.

² Typical condition, 25°C = 0 LSB

Table 8. Output Coding Example, XGYRO_OUT, YGYRO_OUT, and ZGYRO_OUT^{1,2}

| Rate of Rotation | | | Binary Output | Hex Output | Decimal |
|------------------|---------------|--------------|-------------------|------------|---------|
| ±300°/s Range | ±150°/s Range | ±75°/s Range | | | |
| 80°/s | 40°/s | 20°/s | 00 0100 0100 0100 | 0x0444 | 1092 |
| 40°/s | 20°/s | 10°/s | 00 0010 0010 0010 | 0x0222 | 546 |
| 0.07326°/s | 0.03663°/s | 0.018315°/s | 00 0000 0000 0001 | 0x0001 | 1 |
| 0°/s | 0°/s | 0°/s | 00 0000 0000 0000 | 0x0000 | 0 |
| -0.07326°/s | -0.03663°/s | -0.018315°/s | 11 1111 1111 1111 | 0x3FFF | -1 |
| -40°/s | -20°/s | -10°/s | 11 1101 1101 1110 | 0x3DDE | -546 |
| -80°/s | -40°/s | -20°/s | 11 1011 1011 1100 | 0x3BBC | -1092 |

¹ Two MSBs have been masked off and are not considered in the coding.

² Zero offset null performance are assumed.

ADIS16355

Table 9. Output Coding Example, XACCL_OUT, YACCL_OUT, and ZACCL_OUT^{1,2}

| Acceleration (g) | Binary Output | Hexadecimal Output | Decimal |
|------------------|-------------------|--------------------|---------|
| 2.522 | 00 0011 1110 1000 | 0x03E8 | 1000 |
| 1 | 00 0001 1000 1101 | 0x018D | 397 |
| 0.002522 | 00 0000 0000 0001 | 0x0001 | 1 |
| 0 | 00 0000 0000 0000 | 0x0000 | 0 |
| -0.002522 | 11 1111 1111 1111 | 0x3FFF | -1 |
| -1 | 11 1110 0111 0011 | 0x3E73 | -397 |
| -2.522 | 11 1100 0001 1000 | 0x3C18 | -1000 |

¹ Two MSBs have been masked off and are not considered in the coding.

² Zero offset null performance are assumed.

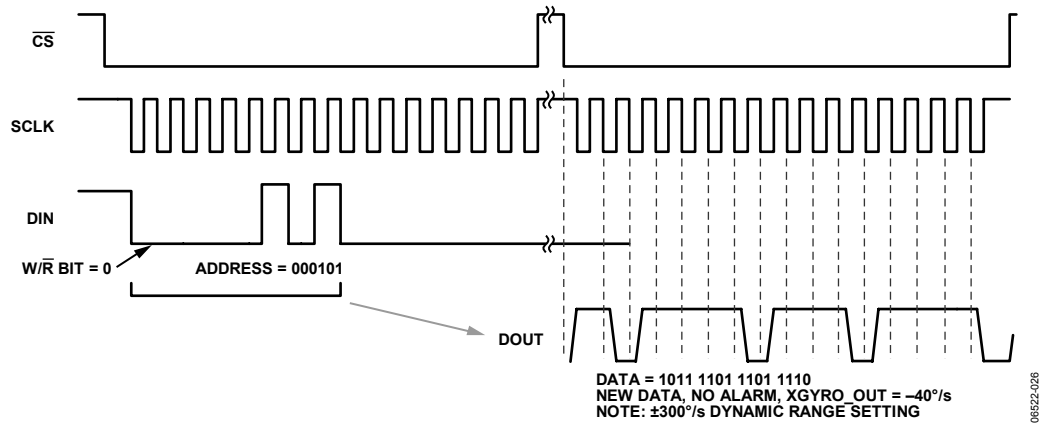


Figure 31. Example Read Cycle

PROGRAMMING AND CONTROL

CONTROL REGISTER OVERVIEW

The ADIS16350 offers many programmable features controlled by writing commands to the appropriate control registers using the SPI. The following sections describe these controls and specify each function, along with the corresponding register configuration. The features available for configuration in this register space are:

- Calibration
- Global commands
- Operational control
 - Sample rate
 - Power management
 - Digital filtering
 - Dynamic range
 - DAC output
 - Digital input/output
- Operational status and diagnostics
 - Self test
 - Status conditions
 - Alarms

CONTROL REGISTER STRUCTURE

The ADIS16350 uses a temporary, RAM-based memory structure to facilitate the control registers displayed in Table 10. The operational configuration is stored in a flash memory structure that automatically loads into the control registers during the start-up sequence. Each nonvolatile register has a corresponding flash memory location for storing the latest configuration contents. The contents of each nonvolatile register must be stored to flash manually.

Note that the contents of the control register are only nonvolatile when they are stored to flash. The flash update command, made available in the COMMAND register, provides this function. The endurance register provides a counter, which allows for reliability management against the flash memory's write cycle specification.

Table 10. Control Register Mapping

| Register Name | Type | Volatility | Addresses | Bytes | Function | Reference Tables |
|---------------|------|--------------------------|--------------|-------|--|--------------------|
| ENDURANCE | R | Nonvolatile | 0x00, 0x01 | 2 | Flash memory write count | Table 30 |
| | | | 0x02 to 0x17 | 22 | Output data | Table 7 |
| | | | 0x18, 0x019 | 2 | Reserved | |
| XGYRO_OFF | R/W | Nonvolatile | 0x1A, 0x1B | 2 | X-axis gyroscope bias offset factor | Table 11, Table 12 |
| YGYRO_OFF | R/W | Nonvolatile | 0x1C, 0x1D | 2 | Y-axis gyroscope bias offset factor | Table 11, Table 12 |
| ZGYRO_OFF | R/W | Nonvolatile | 0x1E, 0x1F | 2 | Z-axis gyroscope bias offset factor | Table 11, Table 12 |
| XACCL_OFF | R/W | Nonvolatile | 0x20, 0x21 | 2 | X-axis acceleration bias offset factor | Table 13, Table 14 |
| YACCL_OFF | R/W | Nonvolatile | 0x22, 0x23 | 2 | Y-axis acceleration bias offset factor | Table 13, Table 14 |
| ZACCL_OFF | R/W | Nonvolatile | 0x24, 0x25 | 2 | Z-axis acceleration bias offset factor | Table 13, Table 14 |
| ALM_MAG1 | R/W | Nonvolatile | 0x26, 0x27 | 2 | Alarm 1 amplitude threshold | Table 33, Table 34 |
| ALM_MAG2 | R/W | Nonvolatile | 0x28, 0x29 | 2 | Alarm 2 amplitude threshold | Table 33, Table 34 |
| ALM_SMPL1 | R/W | Nonvolatile | 0x2A, 0x2B | 2 | Alarm 1 sample period | Table 35, Table 36 |
| ALM_SMPL2 | R/W | Nonvolatile | 0x2C, 0x2D | 2 | Alarm 2 sample period | Table 35, Table 36 |
| ALM_CTRL | R/W | Nonvolatile | 0x2E, 0x2F | 2 | Alarm control | Table 37, Table 38 |
| AUX_DAC | R/W | Volatile | 0x30, 0x31 | 2 | Auxiliary DAC data | Table 23, Table 24 |
| GPIO_CTRL | R/W | Volatile | 0x32, 0x33 | 2 | Auxiliary digital input/output control | Table 25, Table 26 |
| MSC_CTRL | R/W | Nonvolatile ¹ | 0x34, 0x35 | 2 | Miscellaneous control | Table 28, Table 29 |
| SMPL_PRD | R/W | Nonvolatile | 0x36, 0x37 | 2 | Internal sample period (rate) control | Table 17, Table 18 |
| SENS/AVG | R/W | Nonvolatile | 0x38, 0x39 | 2 | Dynamic range/digital filter control | Table 21, Table 22 |
| SLP_CNT | R/W | Volatile | 0x3A, 0x3B | 2 | Sleep mode control | Table 19, Table 20 |
| STATUS | R | Volatile | 0x3C, 0x3D | 2 | System status | Table 31, Table 32 |
| COMMAND | W | N/A | 0x3E, 0x3F | 2 | System command | Table 15, Table 16 |

¹ The contents of the lower byte are nonvolatile; the contents of the upper byte are volatile.

ADIS16355

CALIBRATION

For applications that require point of use calibration, the ADIS16355 provides bias correction registers for all six sensors. Table 11, Table 12, Table 13, and Table 14 provide the details required for using these registers to calibrate the ADIS16355 sensors.

Table 11. Gyroscope Bias Correction Registers

| Register | Addresses | Common Parameters |
|-----------|------------|-----------------------------|
| XGYRO_OFF | 0x1B, 0x1A | Default value = 0x0000 |
| YGYRO_OFF | 0x1D, 0x1C | Scale = 0.018315°/s per LSB |
| ZGYRO_OFF | 0x1F, 0x1E | Twos complement, read/write |

Table 12. Gyroscope Bias Correction Register Bits

| Bits | Description |
|---------|--|
| [15:13] | Not used |
| [12:0] | Data bits, typical adjustment range = $\pm 75^\circ$ |

Table 13. Accelerometer Bias Correction Registers

| Register | Addresses | Common Parameters |
|-----------|------------|-----------------------------|
| XACCL_OFF | 0x21, 0x20 | Default value = 0x0000 |
| YACCL_OFF | 0x23, 0x22 | Scale = 2.522 mg per LSB |
| ZACCL_OFF | 0x25, 0x24 | Twos complement, read/write |

Table 14. Accelerometer Bias Correction Register Bits

| Bits | Description |
|---------|---|
| [15:12] | Not used |
| [11:0] | Data bits, typical adjustment range = $\pm 5.16\text{ g}$ |

Manual Bias Calibration

Since each offset bias register has read/write access, the bias of each sensor is adjustable. For example, if an output offset of 0.18 °/s is observed in the Z-axis gyroscope, the ZGYRO_OFF register provides the calibration factor necessary to improve the accuracy. Using its sensitivity of 0.018315°/s, an adjustment of -10 LSBs is required. The twos complement, hexadecimal code of -10 LSBs is 0x1FF6.

To implement this calibration factor, use the following pseudo code:

```
Write 0xF6 to Address 0x1E, then write 0x1F to
Address 0x1F
```

This step reduces the 0.18°/s error to 0.00315°/s.

Automatic Bias Null Calibration

The ADIS16355 provides a single-command, automatic bias calibration for all three-gyroscope sensors. The COMMAND register provides this function, which measures all three gyroscope output registers, then loads the three bias correction registers with values that return their outputs to zero (null). A single register write command starts this process (see Table 16).

```
Write 0x01 to Address 0x3E
```

Precision Automatic Bias Null Calibration

The ADIS16355 also provides a single-command function that incorporates the optimal averaging time for generating the appropriate bias correction factors for all three gyroscope sensors. This command requires approximately 30 seconds. For optimal calibration accuracy, the device should be stable (no motion) for this entire period. Once it has started, a reset command is required to stop it prematurely, if required. The following sequence starts this calibration option (See Table 16):

```
Write 0x10 to Address 0x3E
```

Restoring Factory Calibration

The ADIS16355 factory calibration can be restored by returning the contents of each bias correction register to their default value of zero. This command also flushes all of the data from the digital filter taps. To accomplish this function for all six-sensor signal paths (see Table 16):

```
Write 0x02 to Address 0x3E
```

Linear Acceleration Bias Compensation (Gyroscopes)

The ADIS16355 provides compensation for acceleration influences on the gyroscopes' bias behavior, using the MSC_CTRL register.

```
Set Bit 7 of Address 0x34 to 1 (see Table 29)
```

Linear Acceleration Origin Alignment

The ADIS16355 provides origin alignment for the accelerometers, to the point of percussion (see Figure 4), using the MSC_CTRL register.

```
Set Bit 6 of Address 0x34 to 1 (see Table 29)
```

GLOBAL COMMANDS

The ADIS16355 provides global commands for common operations such as calibration, flash update, auxiliary DAC latch, and software reset. Each of these global commands has a unique control bit assigned to it in the COMMAND register and is initiated by writing a 1 to its assigned bit.

The flash update command writes the contents of each non-volatile register into flash memory for storage. This process takes approximately 100 ms and requires the power supply voltage to be within specification for the duration of the event. Note that this operation also automatically follows the auto null, precision auto null, and factory reset commands. After waiting the appropriate time for the flash update to complete, verify successful completion by reading the STATUS register (flash update error = zero, if successful).

The DAC latch command loads the contents of AUX_DAC into the DAC latches. Since the AUX_DAC contents must be updated one byte at a time, this command ensures a stable DAC output voltage during updates. Finally, the software reset command sends the ADIS16355 digital processor into a restart sequence, effectively accomplishing the same tasks as the RST line.

Table 15. COMMAND Register Definition

| Address | Default | Format | Access |
|------------|---------|--------|------------|
| 0x3F, 0x3E | N/A | N/A | Write only |

Table 16. COMMAND Bit Descriptions

| Bits | Description |
|--------|-------------------------------------|
| [15:8] | Not used |
| [7] | Software reset command |
| [6:5] | Not used |
| [4] | Precision auto null command |
| [3] | Flash update command |
| [2] | Auxiliary DAC data latch |
| [1] | Factory calibration restore command |
| [0] | Auto null command |

OPERATIONAL CONTROL

Internal Sample Rate

The internal sample rate defines how often data output variables are updated, independent of the rate at which they are read out on the SPI port. The SMPL_PRD register controls the ADIS16350 internal sample rate and has two parts: a time base and a multiplier. The sample period can be calculated using the following equation:

$$T_s = T_B \times (N_s + 1)$$

where:

T_s is the sample period.

T_B is the time base.

N_s is the multiplier.

The default value is the minimum register setting, 0x01, which corresponds to the maximum sample rate of 819.2 samples per second. The contents of this register are nonvolatile.

Table 17. SMPL_PRD Register Definition

| Address | Default | Format | Access |
|------------|---------|--------|--------|
| 0x37, 0x36 | 0x0001 | N/A | R/W |

Table 18. SMPL_PRD Bit Descriptions

| Bits | Description |
|--------|--|
| [15:8] | Not used |
| [7] | Time base, 0 = 0.61035 ms, 1 = 18.921 ms |
| [6:0] | Multiplier (add 1 before multiplying by the time base) |

An example calculation of the sample period for the device is

$$\text{If } SMPL_PRD = 0x0007, \text{ Bits}[7:0] = 00000111$$

$$\text{Bit } 7 = 0 \rightarrow T_B = 0.61035 \text{ ms}$$

$$\text{Bits}[6:0] = 000000111 = 7 = N_s$$

$$T_s = T_B \times (N_s + 1) = 0.61035 \text{ ms} \times (7 + 1) = 4.8828 \text{ ms}$$

$$f_s = 1/T_s = 204.8 \text{ SPS}$$

The sample rate setting has a direct impact on the SPI data rate capability. For SMPL_PRD settings less than, or equal to 0x09 (fast mode), the SPI SCLK can run at a rate up to 2.0 MHz. For SMPL_PRD settings greater than 0x09 (normal mode), the SPI SCLK can run at a rate up to 300 kHz.

The sample rate setting also affects the power dissipation.

The normal mode power dissipation is approximately 67% less than the fast mode power dissipation. The two different modes of operation offer a system-level trade-off between performance (sample rate, serial transfer rate) and power dissipation.

Power Management

In addition to offering two different performance modes for power optimization, the ADIS16350 offers a programmable shutdown period. Writing the appropriate sleep time to the SLP_CNT register shuts the device down for the specified time. The following example illustrates this relationship:

$$\text{Bits}[7:0] = 00000110 = 6 \text{ codes} = 3 \text{ seconds}$$

After completing the sleep period, the ADIS16350 returns to normal operation. If measurements are required before sleep period completion, the ADIS16350 can be awakened by pulling the CS line to down to a 0 state, then returning it back to a 1 state. Otherwise, the CS line must be kept in a 1 (high) state to maintain sleep mode.

When writing a sleep time to the SLP_CNT register, the time between the 16th SCLK edge and the CS rising edge must be less than 10 μs in fast mode and 80 μs on normal mode.

Table 19. SLP_CNT Register Definition

| Address | Scale ¹ | Default | Format | Access |
|------------|--------------------|---------|--------|--------|
| 0x3B, 0x3A | 0.5 sec | 0x0000 | Binary | R/W |

¹ Scale is the weight of each LSB.

Table 20. SLP_CNT Bit Descriptions

| Bits | Description |
|--------|-------------|
| [15:8] | Not used |
| [7:0] | Data bits |

Digital Filtering

Each sensor's signal conditioning circuit has an analog bandwidth of approximately 350 Hz. The ADIS16350 provides a Bartlett Window FIR filter for additional noise reduction on all of the output data registers. The SENS/AVG register stores the number of taps in this filter in seven, power-of-two step sizes (that is, $N = 2^M = 1, 2, 4, 16, 32, \text{ and } 64$).

Filter setup requires one simple step: write the appropriate M factor to the assigned bits in the SENS/AVG register. The bit assignments are listed in Table 22. The frequency response relationship for this filter is:

$$H_B(f) = H_A^2(f) \quad H_A(f) = \frac{\sin(\pi \times N \times f \times t_s)}{N \times \sin(\pi \times f \times t_s)}$$

ADIS16355

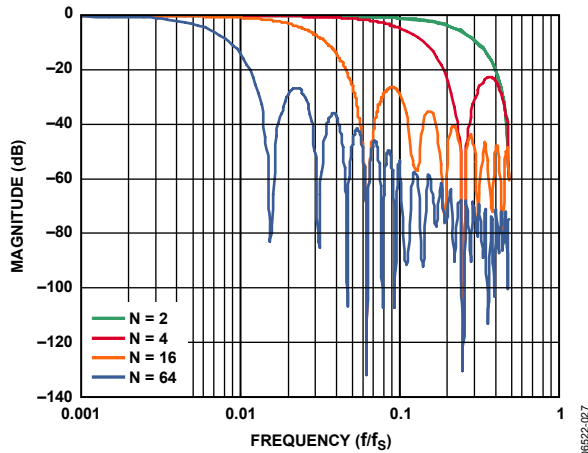


Figure 32. Bartlett Window FIR Frequency Response

Dynamic Range

The ADIS16350 provides three dynamic range settings: $\pm 75^\circ/\text{s}$, $\pm 150^\circ/\text{s}$, and $\pm 300^\circ/\text{s}$. The lower dynamic range settings (75, 150) limit the minimum filter tap sizes in order to maintain the resolution as the measurement range decreases. The recommended order for programming the SENS/AVG register is upper byte (sensitivity) followed by lower byte (filtering). The contents of the SENS/AVG register are nonvolatile.

Table 21. SENS/AVG Register Definition

| Address | Default | Format | Access |
|------------|---------|--------|--------|
| 0x39, 0x38 | 0x0402 | N/A | R/W |

Table 22. SENS/AVG Bit Descriptions

| Bits | Value | Description |
|---------|-------|---|
| [15:11] | | Not used |
| [10:8] | | Measurement range (sensitivity) selection |
| | 100 | 300°/s (default condition) |
| | 010 | 150°/s, filter taps ≥ 4 (Bit 2:0 $\geq 0x02$) |
| | 001 | 75°/s, filter taps ≥ 16 (Bit 2:0 $\geq 0x04$) |
| [7:3] | | Not used |
| [2:0] | | Filter tap setting, $M = \text{decimal of these bits}$ (number of taps, $N = 2^M$) |

Auxiliary DAC

The auxiliary DAC provides a 12-bit level adjustment function. The AUX_DAC register controls the operation of this feature. It offers a rail-to-rail buffered output that has a range of 0 V to 2.5 V. The DAC can drive its output to within 5 mV of the ground reference when it is not sinking current. As the output approaches ground, the linearity begins to degrade (100 LSB beginning point). As the sink current increases, the nonlinear range increases. The DAC output latch function, contained in the COMMAND register, provides continuous operation while writing each byte of this register. The contents of this register are volatile, which means that the desired output level must be set after every reset and power cycle event.

Table 23. AUX_DAC Register Definition

| Address | Default | Format | Access |
|------------|---------|--------|--------|
| 0x31, 0x30 | 0x0000 | Binary | R/W |

Table 24. AUX_DAC Bit Descriptions

| Bits | Description |
|---------|---|
| [15:12] | Not used |
| [11:0] | Data bits 0x0000 – 0 V output, 0x0FFF – 2.5 V output |

General-Purpose Input/Output

The ADIS16350 provides two general-purpose pins that enable digital input/output control using the SPI. The GPIO_CTRL control register establishes the configuration of these pins and handles the SPI-to-pin controls. Each pin provides the flexibility of both input (read) and output (write) operations.

The contents of this register are volatile. For example, writing a 0x0202 to this register establishes Line 2 as an output and sets its level as a 1. Writing 0x0000 to this register establishes both lines as inputs, and their status can be read through Bit 8 and Bit 9 of this register.

The digital input/output lines are also available for data-ready and alarm/error indications. In the event of conflict, the following priority structure governs the digital input/output configuration:

1. MSC_CTRL
2. ALM_CTRL
3. GPIO_CTRL

Table 25. GPIO_CTRL Register Definition

| Address | Default | Format | Access |
|------------|---------|--------|--------|
| 0x33, 0x32 | 0x0000 | N/A | R/W |

Table 26. GPIO_CTRL Bit Descriptions

| Bits | Description |
|---------|--|
| [15:10] | Not used |
| [9] | General-purpose input/output line 2 data level 1 = high, 0 = low |
| [8] | General-purpose input/output line 1 data level 1 = high, 0 = low |
| [7:2] | Not used |
| [1] | General-purpose input/output line 2, data direction control 1 = output, 0 = input |
| [0] | General-purpose input/output line 1, data direction control 1 = output, 0 = input |

STATUS AND DIAGNOSTICS

The ADIS16350 provides a number of status and diagnostic functions. Table 27 provides a summary of these functions, along with their appropriate control registers.

Table 27. Status and Diagnostic Functions

| Function | Register |
|--|--|
| Data-ready input/output indicator | MSC_CTRL |
| Self-test, mechanical check for sensor element | MSC_CTRL |
| Status: Check for predefined error conditions | STATUS |
| Flash memory endurance | ENDURANCE |
| Alarms: Configure and check for user-specific conditions | ALM_MAG1 ALM_MAG2 ALM_SMPL1 ALM_SMPL2 ALM_CTRL |

Data-Ready Input/Output Indicator

The data-ready function provides an indication of updated output data. The MSC_CTRL register provides the opportunity to configure either of the general-purpose input/output pins (DIO1 and DIO2) as a data-ready indicator signal.

Table 28. MSC_CTRL Register Definition

| Address | Default | Format | Access |
|------------|---------|--------|--------|
| 0x35, 0x34 | 0x0000 | N/A | R/W |

Table 29. MSC_CTRL Bit Descriptions

| Bits | Description |
|---------|---|
| [15:11] | Not used |
| [10] | Internal self-test enable (clears on completion) 1 = enabled, 0 = disabled |
| [9] | Manual self-test, negative stimulus 1 = enabled, 0 = disabled |
| [8] | Manual self-test, positive stimulus 1 = enabled, 0 = disabled |
| [7] | Linear acceleration bias compensation for gyroscopes 1 = enabled, 0 = disabled |
| [6] | Linear accelerometer origin alignment 1 = enabled, 0 = disabled |
| [5:3] | Not used |
| [2] | Data-ready enable 1 = enabled, 0 = disabled |
| [1] | Data-ready polarity 1 = active high, 0 = active low |
| [0] | Data-ready line select 1 = DIO2, 0 = DIO1 |

Self Test

The MSC_CTRL register also provides a self-test function, which verifies the MEMS sensor’s mechanical integrity. There are two different self-test options: (1) internal self-test and (2) external self-test.

The internal test provides a simple, two-step process for checking the MEMS sensor:

1. Start the process by writing a 1 to Bit 10 in the MSC_CTRL register.
2. Check the result by reading Bit 5 of the STATUS register.

If a failure is indicated, then Bit 10 to Bit 15 of the STATUS register indicates which of the six sensors it is associated with.

The entire cycle takes approximately 35 ms and the output data is not available during this time. The external self-test is a static condition that can be enabled and disabled. In this test, both positive and negative gyroscope MEMS sensor movements are available. For the accelerometers, only positive MEMS sensor movement is available.

After writing to the appropriate control bit, the output registers reflect the changes after a delay that reflects the response time associated with the sensor/signal conditioning circuit. For example, the standard 350 Hz bandwidth reflects an exponential response with a time constant of 0.45 ms. Note that the digital filtering impacts this delay as well. The appropriate bit definitions for self-test are listed in Table 28 and Table 29.

Flash Memory Endurance

The ENDURANCE register maintains a running count of writes to the flash memory. It provides up to 32,768 counts. Note that if this count is exceeded, the register wraps around, and goes back to zero, before beginning to increment again.

Table 30. ENDURANCE Register Definition

| Address | Default | Format | Access |
|------------|---------|--------|-----------|
| 0x01, 0x00 | N/A | Binary | Read only |

ADIS16355

Status Conditions

The STATUS register contains the following error condition flags: alarm conditions, self-test status, overrange, SPI communication failure, control register update failure, and power supply out of range. See Table 31 and Table 32 for the appropriate register access and bit assignment for each flag.

The bits assigned for checking power supply range and sensor overrange automatically reset to zero when the error condition no longer exists. The remaining error flag bits in the STATUS register require a read in order to return them to zero. Note that a STATUS register read clears all of the bits to zero. If any error conditions remain, the bits revert to 1 during the next internal output register update cycle.

Table 31. STATUS Register Definition

| Address | Default | Format | Access |
|------------|---------|--------|-----------|
| 0x3D, 0x3C | 0x0000 | N/A | Read only |

Table 32. STATUS Bit Descriptions

| Bits | Description |
|-------|---|
| [15] | Z-axis accelerometer self diagnostic error flag 1 = failure, 0 = passing |
| [14] | Y-axis accelerometer self diagnostic error flag 1 = failure, 0 = passing |
| [13] | X-axis accelerometer self diagnostic error flag 1 = failure, 0 = passing |
| [12] | Z-axis gyroscope self diagnostic error flag 1 = failure, 0 = passing |
| [11] | Y-axis gyroscope self diagnostic error flag 1 = failure, 0 = passing |
| [10] | X-axis gyroscope self diagnostic error flag 1 = failure, 0 = passing |
| [9] | Alarm 2 status 1 = active, 0 = inactive |
| [8] | Alarm 1 status 1 = active, 0 = inactive |
| [7:6] | Not used |
| [5] | Self-test diagnostic error flag 1 = error condition, 0 = normal operation |
| [4] | Sensor over range (any of the six) 1 = error condition, 0 = normal operation |
| [3] | SPI communications failure 1 = error condition, 0 = normal operation |
| [2] | Control register update failed 1 = error condition, 0 = normal operation |
| [1] | Power supply in range above 5.25 V 1 = above 5.25 V, 0 = below 5.25 V (normal) |
| [0] | Power supply below 4.75 V 1 = below 4.75 V, 0 = above 4.75 V (normal) |

Alarms

The ADIS16350 provides two independent alarm options for event detection. Event detections occur when output register data meets the configured conditions. Configuration options are:

- All output data registers are available for monitoring as the source data.
- The source data can be filtered or unfiltered.
- Comparisons can be static or dynamic (rate of change).
- The threshold levels and times are configurable.
- Comparison can be greater than or less than.

The ALM_MAG1 register and the ALM_MAG2 register both establish the threshold level for detecting events. These registers take on the format of the source data and provide a bit for establishing the greater than/less than comparison direction.

When making dynamic comparisons, the ALM_SMPL1 register and the ALM_SMPL2 register establish the number of averages taken for the source data as a reference for comparison. In this configuration, each subsequent source data sample is subtracted from the previous one, establishing an instantaneous delta. The ALM_CTRL register controls the source data selection, static/dynamic selection, filtering selection, and digital input/output usage for the alarms.

The rate of change calculation is

$$Y_C = \frac{1}{N_{DS}} \sum_{n=1}^{N_{DS}} y(n+1) - y(n)$$

Rate of change alarm is determined by comparing Y_C with M_C according to ALM_MAG1 / 2 settings

where:

N_{DS} is the number of samples in ALM_SMPL1 and ALM_SMPL2.

$y(n)$ is the sampled output data.

M_C is the magnitude for comparison in ALM_MAG1 and ALM_MAG2.

Y_C is the factor to compare with M_C .

Table 33. ALM_MAG1 and ALM_MAG2 Register Definitions

| Register | Addresses | Default | Format | Access |
|----------|------------|---------|--------|--------|
| ALM_MAG1 | 0x27, 0x26 | 0x0000 | N/A | R/W |
| ALM_MAG2 | 0x29, 0x28 | 0x0000 | N/A | R/W |

Table 34. ALM_MAG1 and ALM_MAG2 Bit Designations

| Bits | Description |
|--------|--|
| [15] | Comparison polarity: 1 = greater than, 0 = less than |
| [14] | Not used |
| [13:0] | Data bits, format matches source data format |

Table 35. ALM_SMPL1 and ALM_SIMPL2 Register Definitions

| Registers | Addresses | Default | Format | Access |
|-----------|------------|---------|--------|--------|
| ALM_SMPL1 | 0x2B, 0x2A | 0x0000 | Binary | R/W |
| ALM_SMPL2 | 0x2D, 0x2C | 0x0000 | Binary | R/W |

Table 36. ALM_SMPL1 and ALM_SIMPL2 Bit Designations

| Bit | Description |
|--------|-------------|
| [15:8] | Not used |
| [7:0] | Data bits |

Table 37. ALM_CTRL Register Definition

| Addresses | Default | Format | Access |
|------------|---------|--------|--------|
| 0x2F, 0x2E | 0x0000 | N/A | R/W |

Table 38. ALM_CTRL Bit Designations

| Bits | Value | Description |
|---------|-------|---|
| [15:12] | | Alarm 2 source selection |
| | 0000 | Disable |
| | 0001 | Power supply output |
| | 0010 | X-axis gyroscope output |
| | 0011 | Y-axis gyroscope output |
| | 0100 | Z-axis gyroscope output |
| | 0101 | X-axis accelerometer output |
| | 0110 | Y-axis accelerometer output |
| | 0111 | Z-axis accelerometer output |
| | 1000 | X-axis gyroscope temperature output |
| | 1001 | Y-axis gyroscope temperature output |
| | 1010 | Z-axis gyroscope temperature output |
| | 1011 | Auxiliary ADC output |
| [11:8] | | Alarm 1 source selection (same as Alarm 2) |
| [7] | | Rate of change (ROC) enable for Alarm 2 1 = rate of change, 0 = static level |
| [6] | | Rate of change (ROC) enable for Alarm 1 1 = rate of change, 0 = static level |
| [5] | | Not used |
| [4] | | Comparison data filter setting 1 = filtered data, 0 = unfiltered data |
| [3] | | Not used |
| [2] | | Alarm output enable 1 = enabled, 0 = disabled |
| [1] | | Alarm output polarity 1 = active high, 0 = active low |
| [0] | | Alarm output line select 1 = DIO2, 0 = DIO1 |

APPLICATIONS INFORMATION

INSTALLATION GUIDELINES

Installing the ADIS16350 requires two steps: mechanical attachment of the body followed by the electrical connection. This device is designed for post-solder reflow installation. It is not designed to survive the temperatures associated with normal solder reflow processes.

Mechanical Attachment

The ADIS16350 is designed for simple mechanical attachment. The open mounting tabs on each side of the body provide enough room for 2 mm (or 2-56) machine screws. Note that 316 stainless steel and aluminum screws are available for use in this attachment.

When planning the installation process, the primary tradeoff to consider is the attachment strength advantage of stainless steel against the nonmagnetic properties of aluminum for systems that employ magnetic sensors. In addition, the ADIS16350 provides 1.5 mm alignment pinholes, one on each side.

Location accuracy of the mating holes may force the use of a smaller pin. Figure 33 provides a graphical display of the mechanical attachment and Figure 34 provides a recommendation for the physical layout of all the holes required for attaching the ADIS16350.

Electrical Connections

The electrical interface for the ADIS16350 is a single connector, which is attached to a flexible circuit extension, and strengthened by a rigid 0.7 mm thick PCB (FR4 equivalent material).

This connector is a dual-row, 2-12, 1 mm male header, which mates to Samtec part number CLM-112-02-L-D-A or the equivalent. The flexible circuit has stress relief points to absorb environmental stresses, such as temperature cycling and vibration. Figure 34 provides the alignment hole locations for designs that employ the suggested connector mate. This connection is held by friction only.

Proper Removal

The flexible circuit interface can tear under excessive force conditions. An example of excessive force is attempting to break the electrical connection by pulling on the ADIS16350's body, placing all of the stress on the flexible circuit.

The electrical connector must be broken by an appropriate tool, which is designed to apply even pressure to each side of the rigid part of the flex cable. The recommended extraction sequence is to break the mate between the electrical interface, and then to remove the mechanical attachment hardware.

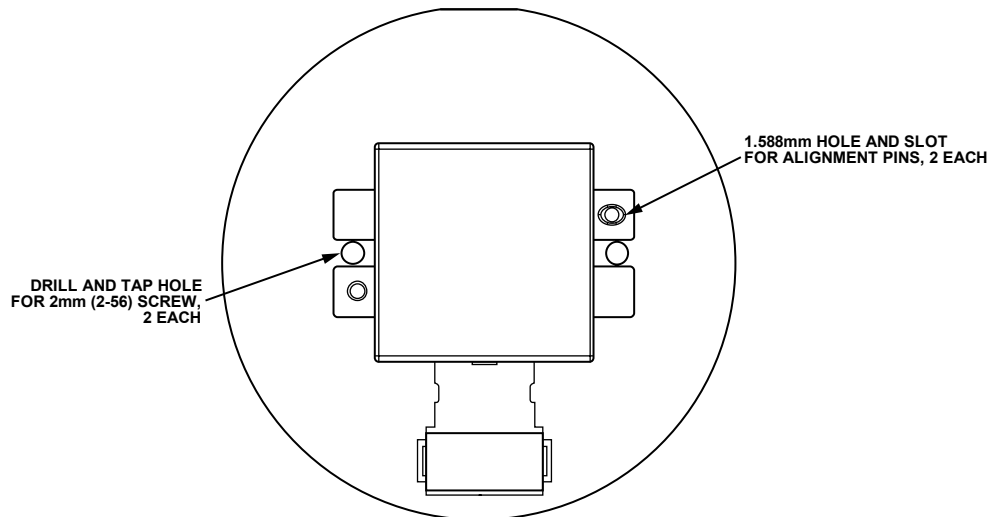


Figure 33. Mechanical Attachment

06522-028

ADIS16355

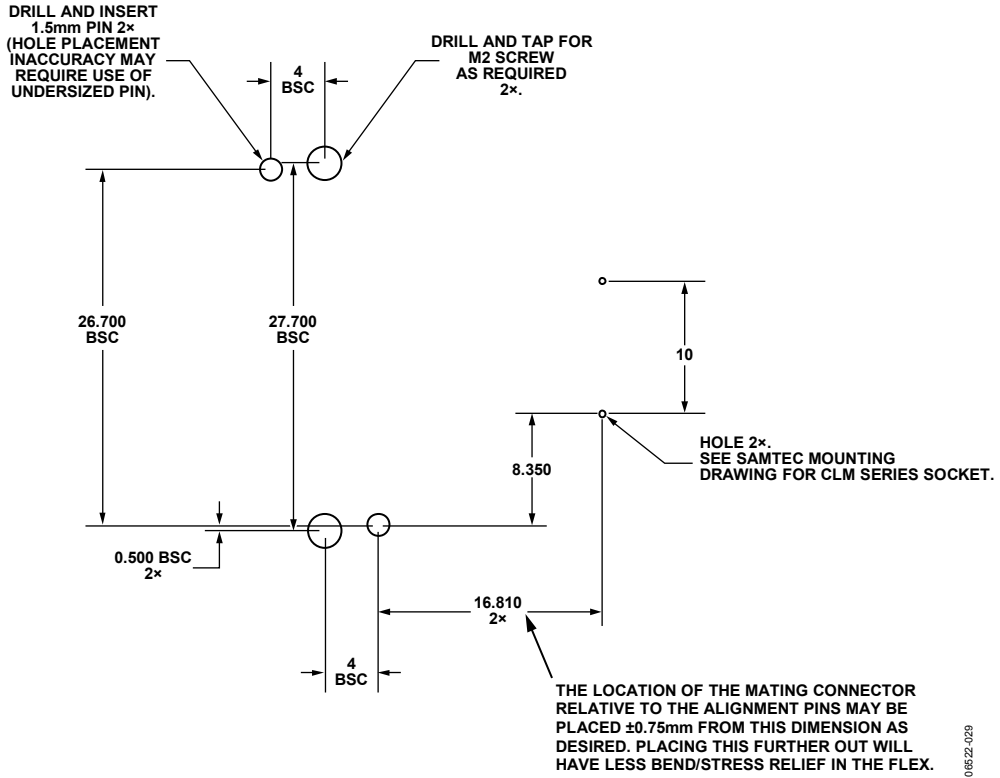


Figure 34. Hole Locations

ADIS16355

OUTLINE DIMENSIONS

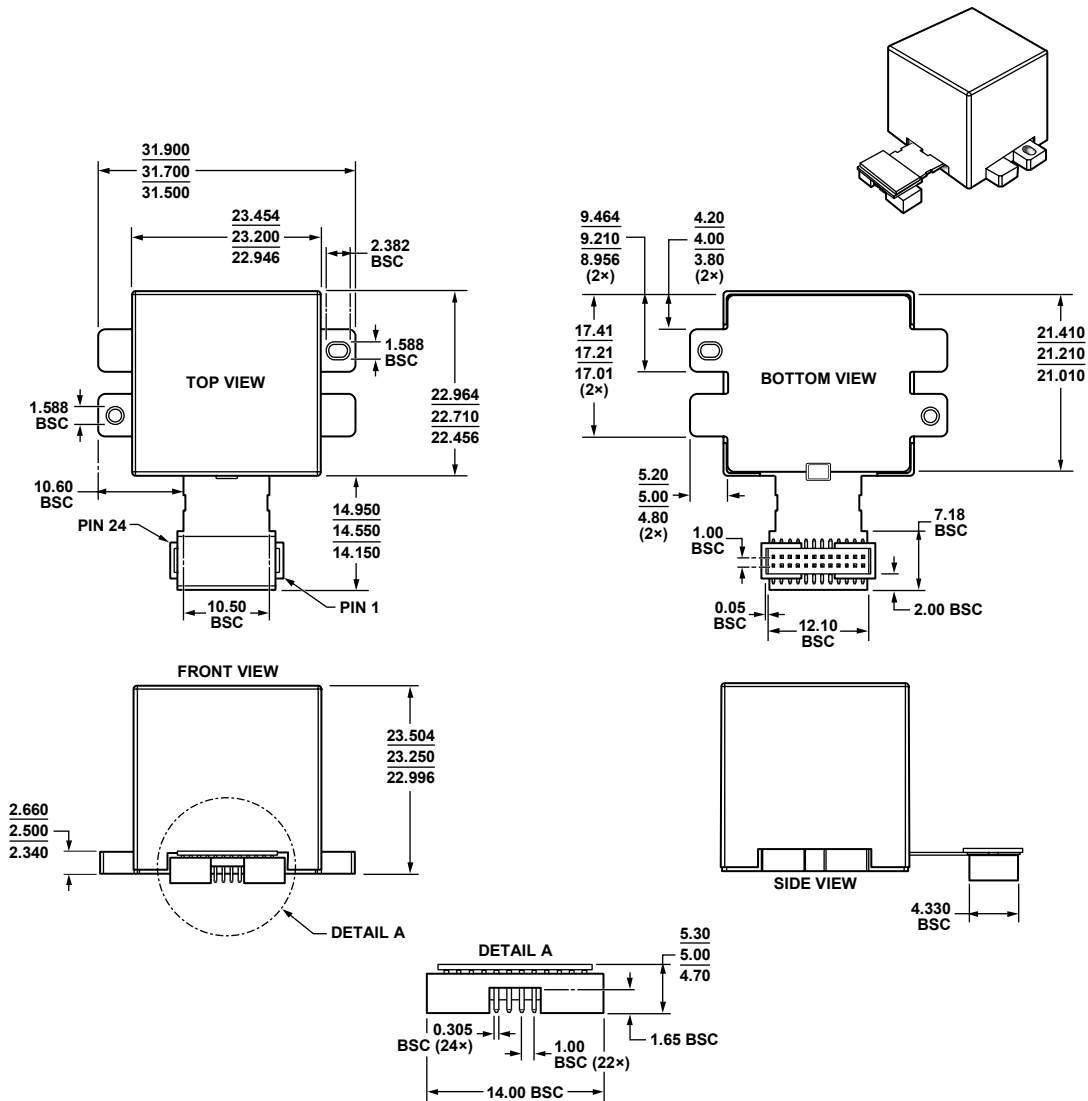


Figure 35. ADIS16355 Module with Connector Interface (ML-24-2)
Dimensions shown in millimeters

081507-5

ORDERING GUIDE

| Model | Temperature Range | Package Description | Package Option |
|------------------------------|-------------------|---|----------------|
| ADIS16350AMLZ ¹ | -40°C to +85°C | 24-Lead Module with Connector Interface | ML-24-2 |
| ADIS16350/PCBZ ¹ | | Interface Board | |
| ADIS16350/EVALZ ¹ | | PC Evaluation System | |
| ADIS16355AMLZ ¹ | -40°C to +85°C | 24-Lead Module with Connector Interface | ML-24-2 |
| ADIS16355/PCBZ ¹ | | Interface Board | |
| ADIS16355/EVALZ ¹ | | PC Evaluation System | |

¹ Z = RoHS Compliant Part.

ADIS16355

NOTES

ADIS16355

NOTES

ADIS16355

NOTES