



# SAW Components

Data Sheet X 6933 D





**SAW Components**

**X 6933 D**

**Bandpass Filter**

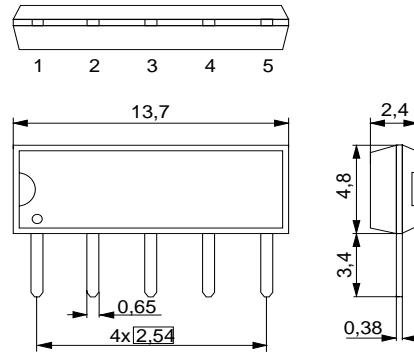
**57,00 MHz**

Data Sheet

Duroplast package **SIP5D**

**Features**

- IF filter for digital terrestrial TV
- Constant group delay
- Optimized for cascade of two devices
- Standard IC package



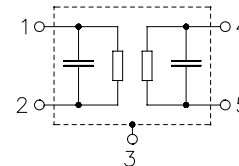
**Terminals**

- Tinned CuFe alloy

Dimensions in mm, approx. weight 0,5 g

**Pin configuration**

- 1 Input
- 2 Input - ground
- 3 Chip carrier - ground
- 4 Output
- 5 Output



Type	Ordering code	Marking and package according to	Packing according to
X 6933 D	B39570-X6933-N201	C61157-A1-A21	F61074-V8049-Z000

**Maximum ratings**

Operable temperature range	$T_A$	-25/+65	°C	
Storage temperature range	$T_{stg}$	-40/+85	°C	
DC voltage	$V_{DC}$	5	V	between any terminals
AC voltage	$V_{pp}$	10	V	between any terminals



**SAW Components**

**X 6933 D**

**Bandpass Filter**

**57,00 MHz**

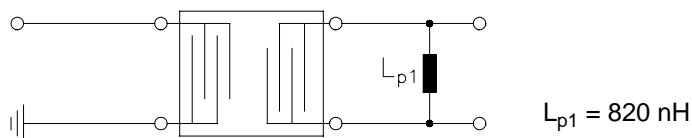
**Data Sheet**

**Characteristics**

Reference temperature:  $T_A = 25 (45) \text{ }^\circ\text{C}$   
 Terminating source impedance:  $Z_S = 50 \text{ } \Omega$   
 Terminating load impedance:  $Z_L = 2 \text{ k}\Omega \parallel 3 \text{ pF}$  and matching network

		<b>min.</b>	<b>typ.</b>	<b>max.</b>	
<b>Insertion attenuation</b>	$\alpha$				
Reference level for the following data	57,02 (57,00) MHz	14,5	16,0	17,5	dB
<b>Amplitude ripple (p-p)</b>	$\Delta\alpha$				
54,52 ... 59,52 (54,50 ... 59,50) MHz		—	0,5	—	dB
<b>Relative attenuation</b>	$\alpha_{rel}$				
52,77 (52,75) MHz		40,0	46,0	—	dB
53,52 (53,50) MHz		—	27,0	—	dB
54,21 (54,19) MHz		-0,1	0,9	1,9	dB
59,83 (59,81) MHz		0,3	1,3	2,3	dB
60,27 (60,25) MHz		—	13,0	—	dB
62,40 (62,38) MHz		42,0	48,0	—	dB
64,77 (64,75) MHz		43,0	49,0	—	dB
Lower sidelobe					
45,02 ... 50,02 (45,00 ... 50,00) MHz		39,0	45,0	—	dB
50,02 ... 52,77 (50,00 ... 52,75) MHz		36,0	40,0	—	dB
Upper sidelobe					
62,40 ... 70,02 (62,38 ... 70,00) MHz		38,0	45,0	—	dB
<b>Reflected wave signal suppression</b>					
1,5 $\mu\text{s}$ ... 6,0 $\mu\text{s}$ after main pulse (test pulse 250 ns, carrier frequency 57,02 MHz)		42,0	52,0	—	dB
<b>Group delay ripple (p-p)</b>	$\Delta\tau$				
54,21 ... 59,83 (54,19 ... 59,81) MHz		—	40	—	ns
<b>Impedance at 57,02 MHz</b>					
Input: $Z_{IN} = R_{IN} \parallel C_{IN}$		—	1,3 $\parallel$ 21,9	—	k $\Omega$ $\parallel$ pF
Output: $Z_{OUT} = R_{OUT} \parallel C_{OUT}$		—	4,0 $\parallel$ 6,5	—	k $\Omega$ $\parallel$ pF
<b>Temperature coefficient of frequency</b>	$TC_f$	—	-18	—	ppm/K

Matching network:





SAW Components

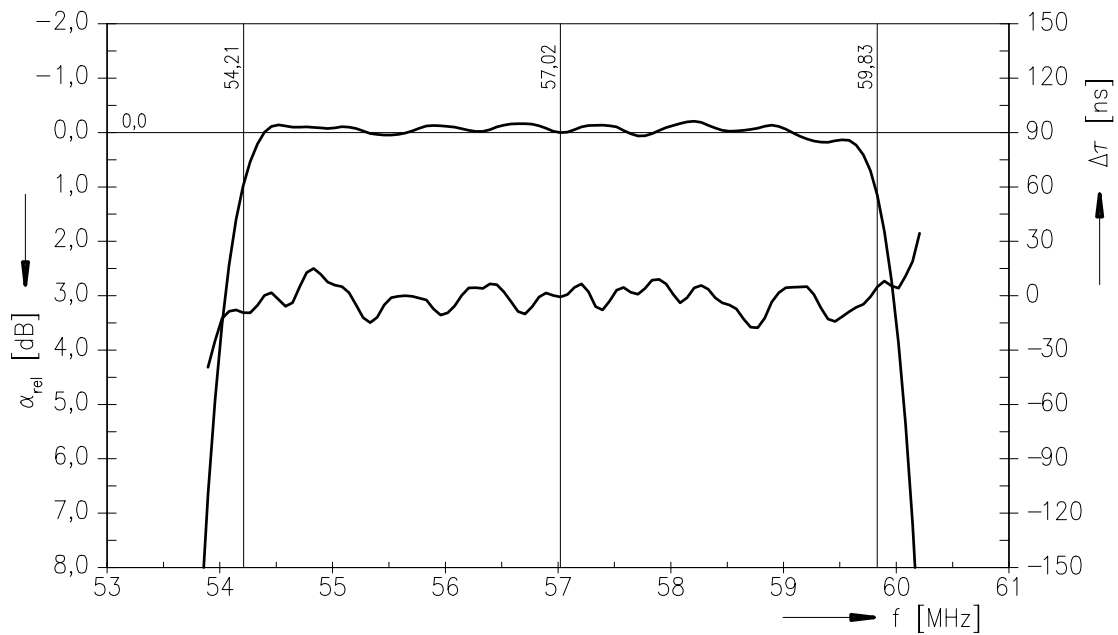
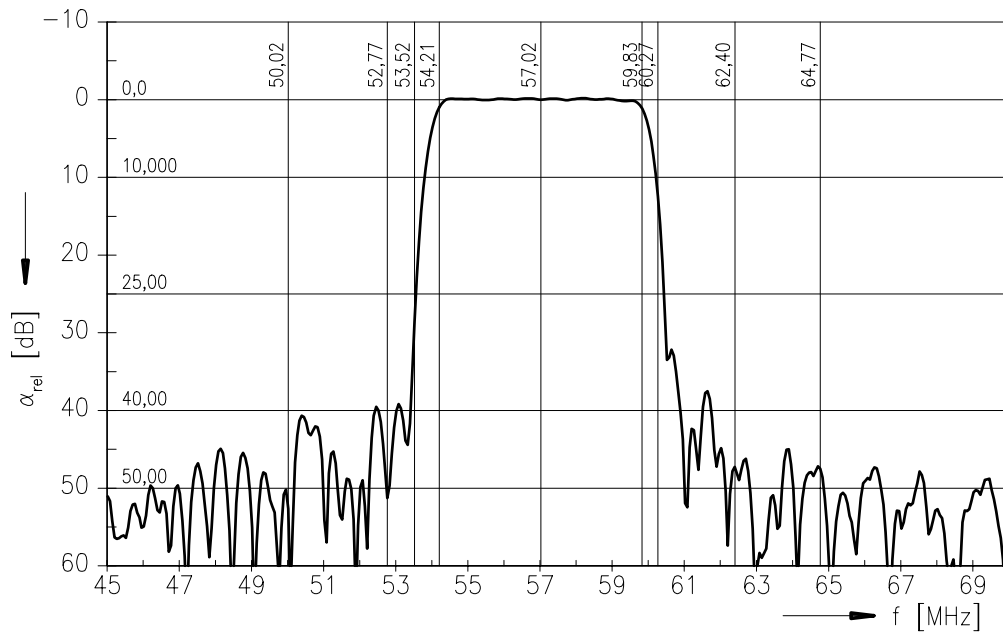
X 6933 D

Bandpass Filter

57,00 MHz

Data Sheet

Frequency response





SAW Components

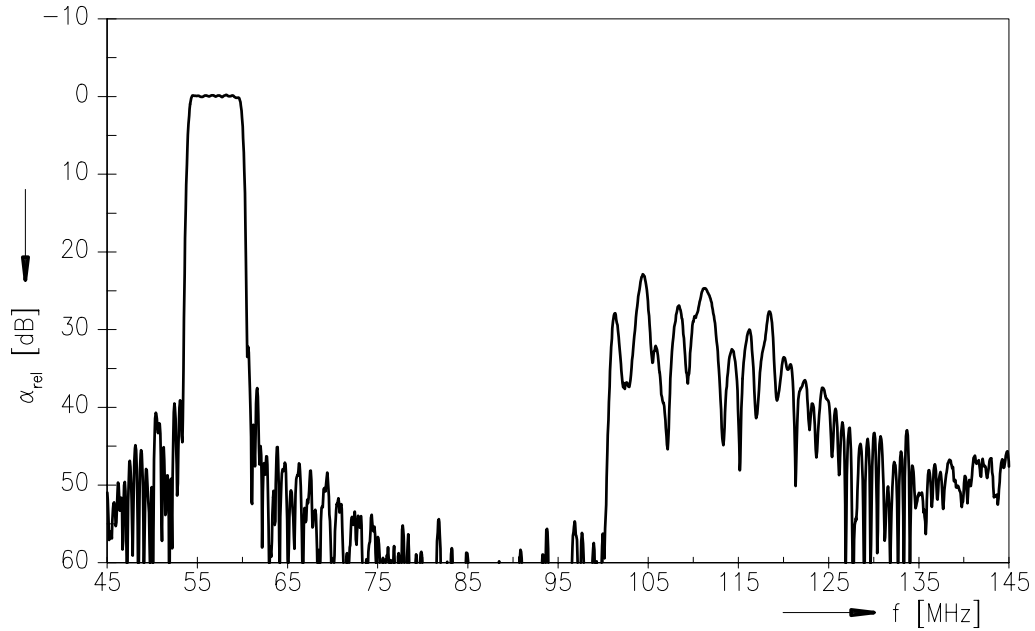
X 6933 D

Bandpass Filter

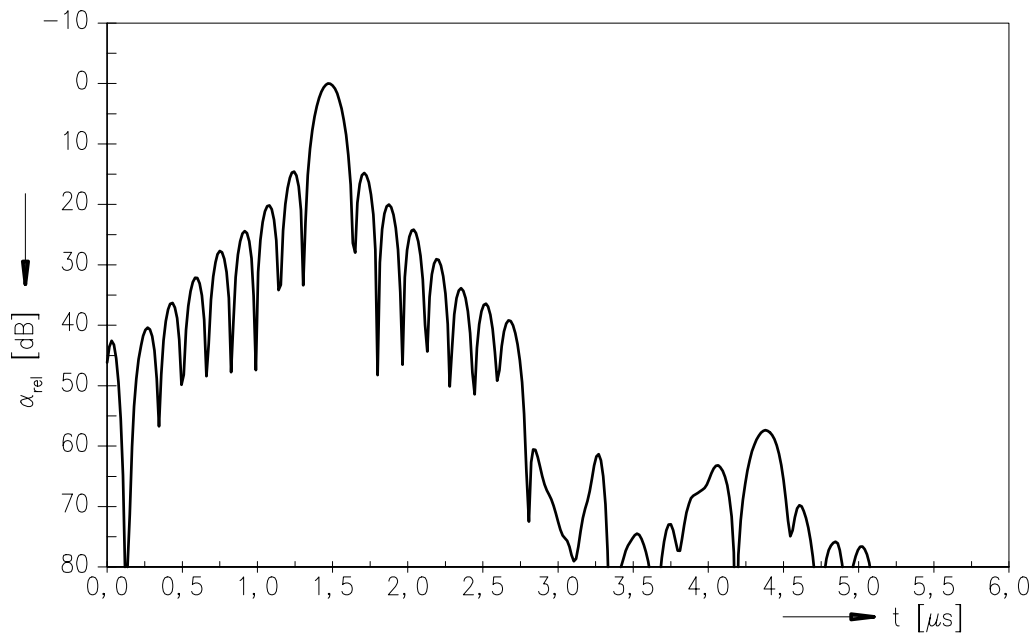
57,00 MHz

Data Sheet

### Frequency response



### Time domain response





**SAW Components**

**X 6933 D**

**Bandpass Filter**

**57,00 MHz**

Data Sheet

**Published by EPCOS AG**

**Surface Acoustic Wave Components Division, SAW CE MM PD**

**P.O. Box 80 17 09, D-81617 München**

© EPCOS AG 2004. Reproduction, publication and dissemination of this brochure and the information contained therein without EPCOS' prior express consent is prohibited.

Purchase orders are subject to the General Conditions for the Supply of Products and Services of the Electrical and Electronics Industry recommended by the ZVEI (German Electrical and Electronic Manufacturers' Association), unless otherwise agreed.

This brochure replaces the previous edition.

For questions on technology, prices and delivery please contact the Sales Offices of EPCOS AG or the international Representatives.

Due to technical requirements components may contain dangerous substances. For information on the type in question please also contact one of our Sales Offices.