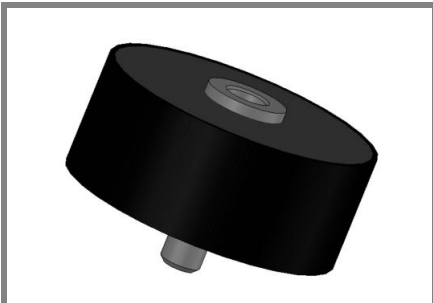


Si-E 8000_3600-1,8



High voltage rectifiers

Si-E 8000_3600-1,8

Forward Current: 1,8 A

Reverse Voltage: to 24000 V

Features

- Simple mounting
- Epoxy material has UL classification 94V-0
- Use in oil
- Standard packing : bulk

Typical Applications

- X-ray equipment
- Electrostatic dust precipitators
- Lasers
- HV welding
- HV test equipment
- Wood dry equipment
- Plasma equipment
- HV power supply

Mechanical Data

- Epoxy potting
- Weight approx. : 110g
- Plastic case : $\Phi 55 \times 36$ (mm)

Type	Repetitive peak reverse voltage V_{RRM} V	Alternate input voltage V_{VRMS} V	Rated DC voltage V_{RD} V	Max. forward voltage V_F V
Si-E 8000/3600-1,8	24000	8000	3600	15 at I_{FAV}

Absolute Maximum Ratings		$T_C = 25^\circ\text{C}$ unless otherwise specified	
Symbol	Conditions	Values	Units
I_{FAV}	Max. averaged fwd. current, R-load, $T_A = 45^\circ\text{C}$	1,8	A
I_{FSM}	Surge forw. current 50 Hz half sin-wave, $T_A = 45^\circ\text{C}$	100	A
I_t^2	Rating for fusing, $t < 10$ ms	50	A ² s
I_R	Maximum reverse current, $T_J = 25^\circ\text{C}$, $V_R = V_{RRM}$	10	μA
I_R	Maximum reverse current, $T_J = 150^\circ\text{C}$, $V_R = V_{RRM}$	1	mA
T_J	Operating junction temperature	-40 ... +150	$^\circ\text{C}$
T_s	Storage temperature	-40 ... +150	$^\circ\text{C}$

