

# Monolithic crystal filter

## MQF21.4-1500/09



### Application

- 6 pol filter
- i.f.- filter
- use in mobile and stationary transceivers

### Limiting values

		Unit	Value
Center frequency	$f_0$	MHz	21.4
Insertion loss		dB	$\leq 3.0$
Pass band at 3.0 dB		kHz	$\pm 7.50$
Ripple in pass band	$f_0 \pm 6.00$ kHz	dB	$\leq 2.0$
Stop band attenuation	$f_0 \pm 17.5$ kHz	dB	$\geq 45$
	$f_0 \pm 25$ kHz	dB	$> 65$
Alternate attenuation	$f_0 \pm 50...500$ kHz	dB	$> 80$ except spurious

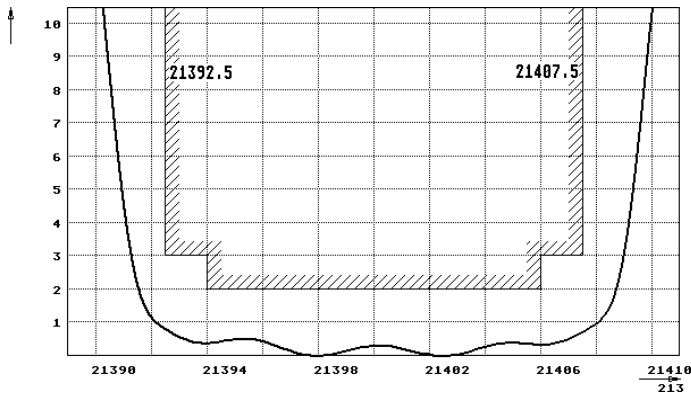
### Terminating impedance Z

R1    C1	Ohm/pF	1500    2
R2    C2	Ohm/pF	1500    2

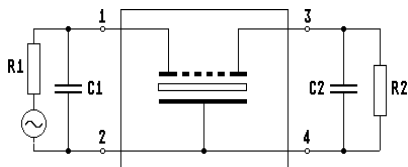
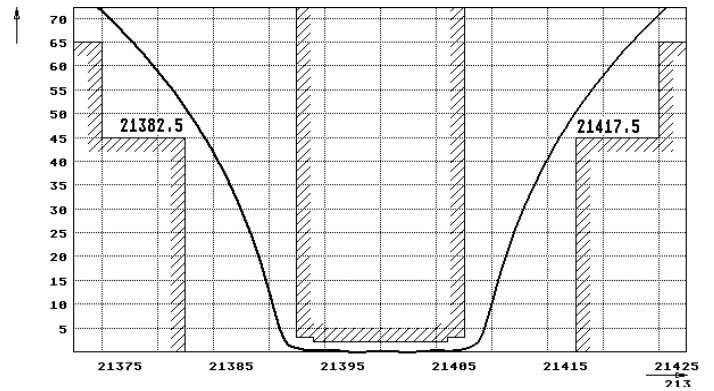
Operating temp. range	° C	-20... +70
-----------------------	-----	------------

### Characteristics MQF21.4-1500/09

#### Pass band



#### Stop band



Pin connections: 1 Input  
2 Input-E  
3 Output  
4 Output-E

