



Design Example Report

Title	<i>2W Non-isolated Power Supply using LNK305P</i>
Specification	Input: 85-265V _{AC} Output: 15V/130mA (220mA _{pk})
Application	Motor Control
Author	Power Integrations Applications Department
Document Number	DER-47
Date	April 20, 2005
Revision	1.0

Summary and Features

- Highly integrated solution
- Lowest possible component count
- No optocoupler or zener diode required for regulation
- Thermal overload protection with automatic recovery
- Less than 300mW no-load consumption
- Very high efficiency at full load

The products and applications illustrated herein (including circuits external to the products and transformer construction) may be covered by one or more U.S. and foreign patents or potentially by pending U.S. and foreign patent applications assigned to Power Integrations. A complete list of Power Integrations' patents may be found at www.powerint.com

Table Of Contents

1	Introduction	3
2	Power Supply Specification.....	3
3	Schematic	4
4	Circuit Description	4
4.1	Bill Of Materials.....	5
5	Performance Data	5
5.1	Efficiency.....	6
5.2	Regulation.....	6
5.2.1	Line regulation	6
5.2.2	Load regulation	7
5.2.3	No-load input power.....	7
6	Output noise measurements	8
7	Revision History	8

Important Note:

This board is designed to be non-isolated. Please take necessary safety precautions.

Design Reports contain a power supply design specification, schematic, bill of materials, and transformer documentation. Performance data and typical operation characteristics are included. Typically only a single prototype has been built.



1 Introduction

This document is a prototype engineering report describing a 15V, 130mA non-isolated power supply using a LNK305P from Power Integrations.

This document contains the power supply specification, schematic, bill of materials and measurements results.

2 Power Supply Specification

Description	Symbol	Min	Typ	Max	Units	Comment
Input						
Voltage	V_{IN}	85		265	V_{AC}	
Frequency	f_{LINE}	47	50/60	63	Hz	
Outputs						
Output Voltage	V_{OUT}		15		V	[±3%]
Output Ripple Voltage	V_{RIPPLE}			150	mV	20 MHz Bandwidth
Output Current	I_{OUT}		130	220	mA	
Total Output Power						
Continuous Output Power	P_{OUT}		1.95		W	
Peak Output Power	P_{OUT_PEAK}			3.3	W	
Ambient Temperature	T_{AMB}	0		70	°C	Open frame

Table 1 - Power Supply Specification



3 Schematic

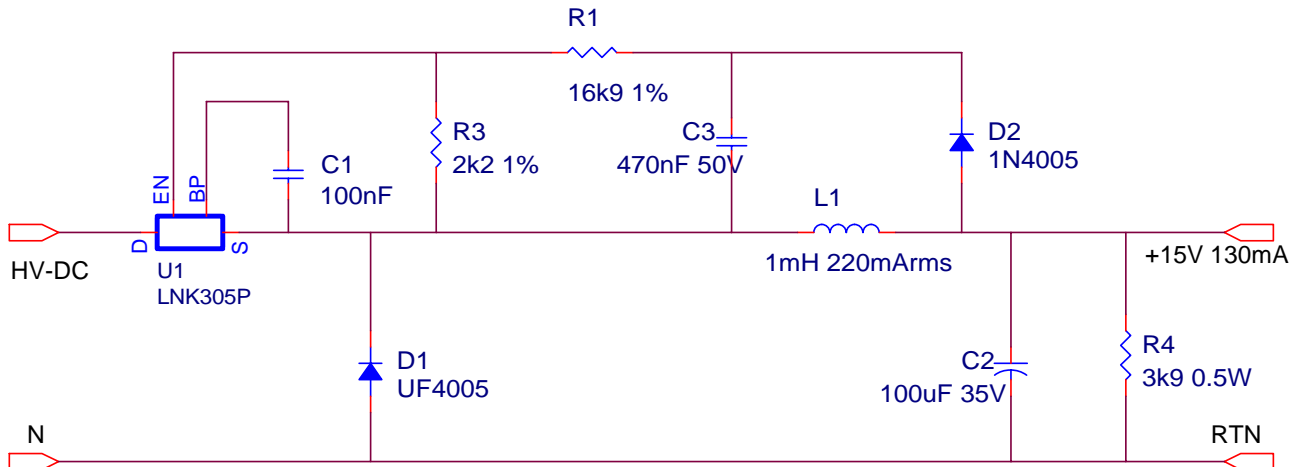


Figure 1 - Schematic after AC rectification

4 Circuit Description

The tested power supply had an input stage including one diode for the rectification and a π filter (4.7uF, 1mH, 4.7uF), but this stage is not included in the schematic, and may not be needed in other systems if EMI filtering is present.

The voltage across L1 is rectified and smoothed by D1 and C2 during U1's off-time. To a first order, the forward voltage drop of D2 (slow diode used in the tests) and D1 (must be an ultrafast) can be considered similar. Therefore the voltage across C4 tracks the output voltage. The voltage across C3 is sensed and regulated via the resistor divider R1-R3 connected to U1's EN-pin. Resistor R4 provides a small pre-load current (3.8mA) for operation down to 0mA output current.



4.1 Bill Of Materials

Item	Reference	Description/part number	Manufacturer
1	R1	16k9, 1%, 0.25W	
2	R3	2k2, 1%, 0.25W	
3	R4	3k9, 5%, 0.5W	
4	L1	1mH, 220mArms	Token
5	C1	100nF	
6	C2	100uF, 35V, low ESR	
7	C3	0.47uF, 50V	
8	D1	UF4005 (ultrafast diode)	Vishay
9	D2	1N4005 (normal p/n diode)	Vishay
10	U1	LNK305	Power Integrations

Table 2 - SMPS Bill of Materials

5 Performance Data

All measurements performed at room temperature, 50 Hz input frequency.



5.1 Efficiency

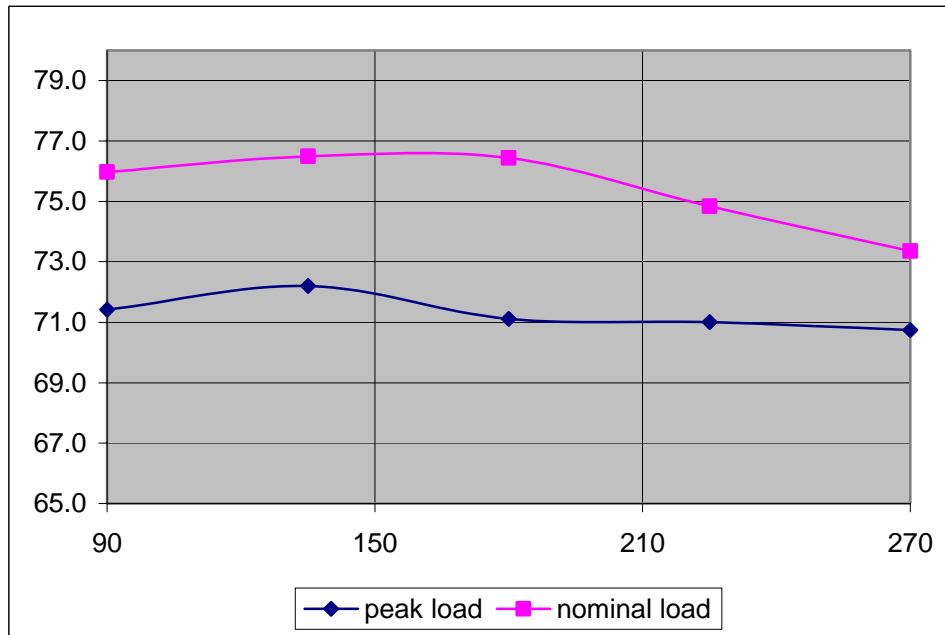


Figure 2 – Efficiency measurements vs input voltage (@130mA and 220mA load)

5.2 Regulation

5.2.1 Line regulation

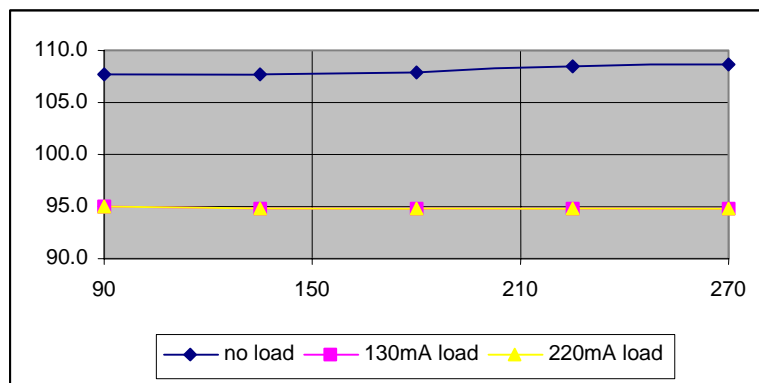


Figure 3 – Output voltage tolerance (in % of the nominal output voltage level) vs input voltage,
@ 0, 130mA and 220mA load



5.2.2 Load regulation

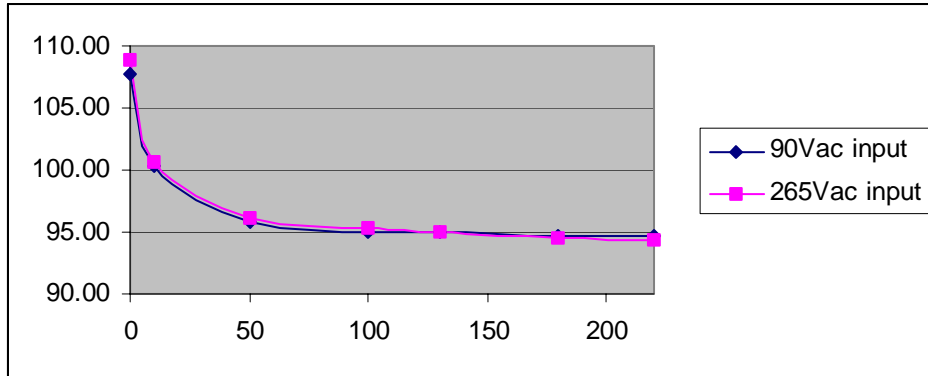


Figure 4 - Load regulation (in % of the nominal output voltage level)

5.2.3 No-load input power

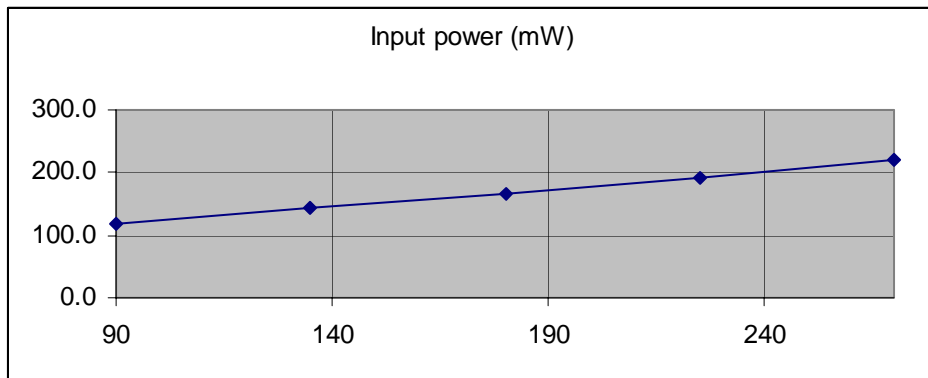


Figure 5 - No-load input power vs input voltage



6 Output noise measurements

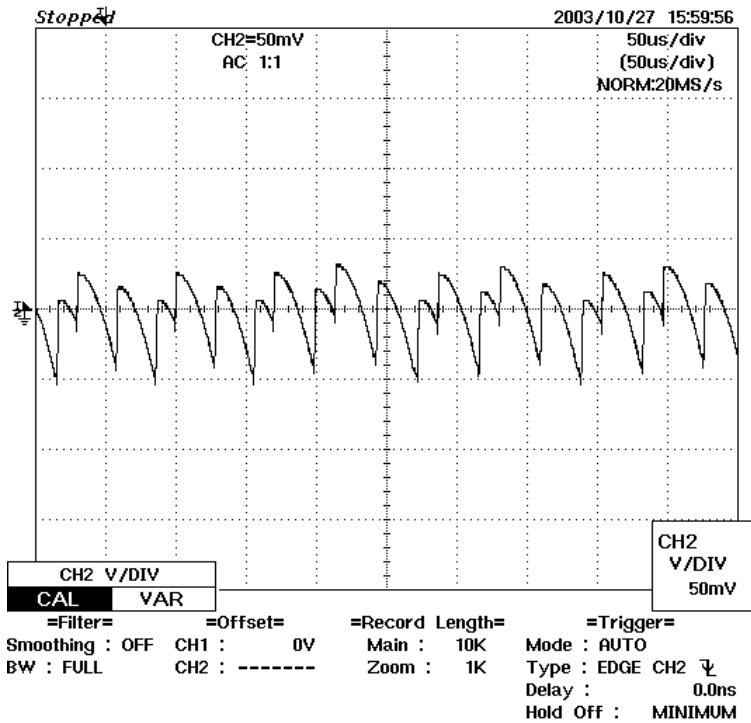


Figure 6 - Output ripple @ 230Vac input and 130mA load

7 Revision History

Date	Author	Revision	Description & changes	Reviewed
April 20, 2005	TP	1.0	Initial release	VC/JC / AM



For the latest updates, visit our Web site: www.powerint.com

PATENT INFORMATION

Power Integrations reserves the right to make changes to its products at any time to improve reliability or manufacturability. Power Integrations does not assume any liability arising from the use of any device or circuit described herein, nor does it convey any license under its patent rights or the rights of others.

The products and applications illustrated herein (including circuits external to the products and transformer construction) may be covered by one or more U.S. and foreign patents or potentially by pending U.S. and foreign patent applications assigned to Power Integrations. A complete list of Power Integrations' patents may be found at www.powerint.com.

The PI Logo, **TOPSwitch**, **TinySwitch**, **LinkSwitch**, and **EcoSmart** are registered trademarks of Power Integrations. **PI Expert** and **DPA-Switch** are trademarks of Power Integrations.
© Copyright 2003, Power Integrations.

WORLD HEADQUARTERS

Power Integrations
5245 Hellyer Avenue,
San Jose, CA 95138, USA
Main: +1-408-414-9200
Customer Service:
Phone: +1-408-414-9665
Fax: +1-408-414-9765
e-mail:
usasales@powerint.com

AMERICAS

Power Integrations, Inc.
4335 South Lee Street,
Suite G,
Buford, GA 30518, USA
Phone: +1-678-714-6033
Fax: +1-678-714-6012
e-mail:
usasales@powerint.com

CHINA (SHANGHAI)

Power Integrations
International Holdings, Inc.
Rm 807, Pacheer,
Commercial Centre,
555 Nanjing West Road,
Shanghai, 200041, China
Phone: +86-21-6215-5548
Fax: +86-21-6215-2468
e-mail:
chinasales@powerint.com

CHINA (SHENZHEN)

Power Integrations
International Holdings, Inc.
Rm# 1705, Bao Hua Bldg.
1016 Hua Qiang Bei Lu,
Shenzhen, Guangdong,
518031, China
Phone: +86-755-8367-5143
Fax: +86-755-8377-9610
e-mail: chinasales@powerint.com

GERMANY

Power Integrations, GmbH
Rueckerstrasse 3,
D-80336, Munich, Germany
Phone: +49-895-527-3910
Fax: +49-895-527-3920
e-mail: eurossales@powerint.com

INDIA (TECHNICAL SUPPORT)

Innovatech
261/A, Ground Floor
7th Main, 17th Cross,
Sadashivanagar
Bangalore, India, 560080
Phone: +91-80-5113-8020
Fax: +91-80-5113-8023
e-mail: indiasales@powerint.com

ITALY

Power Integrations s.r.l.
Via Vittorio Veneto 12,
Bresso, Milano,
20091, Italy
Phone: +39-028-928-6001
Fax: +39-028-928-6009
e-mail:
eurossales@powerint.com

JAPAN

Power Integrations, K.K.
Keihin-Tatemono 1st Bldg.
12-20 Shin-Yokohama,
2-Chome,
Kohoku-ku, Yokohama-shi,
Kanagawa 222-0033, Japan
Phone: +81-45-471-1021
Fax: +81-45-471-3717
e-mail:
japansales@powerint.com

KOREA

Power Integrations
International Holdings, Inc.
8th Floor, DongSung Bldg.
17-8 Yoido-dong,
Yongdeungpo-gu,
Seoul, 150-874, Korea
Phone: +82-2-782-2840
Fax: +82-2-782-4427
e-mail:
koreasales@powerint.com

SINGAPORE (ASIA PACIFIC HEADQUARTERS)

Power Integrations, Singapore
51 Newton Road,
#15-08/10 Goldhill Plaza,
Singapore, 308900
Phone: +65-6358-2160
Fax: +65-6358-2015
e-mail:
singaporesales@powerint.com

TAIWAN

Power Integrations
International Holdings, Inc.
17F-3, No. 510,
Chung Hsiao E. Rd., Sec. 5,
Taipei, Taiwan 110, R.O.C.
Phone: +886-2-2727-1221
Fax: +886-2-2727-1223
e-mail:
taiwansales@powerint.com

UK (EUROPE & AFRICA HEADQUARTERS)

1st Floor, St. James's House
East Street
Farnham, Surrey GU9 7TJ
United Kingdom
Phone: +44-1252-730-140
Fax: +44-1252-727-689
e-mail: eurossales@powerint.com

APPLICATIONS HOTLINE

World Wide +1-408-414-9660

APPLICATIONS FAX

World Wide +1-408-414-9760



Power Integrations

Tel: +1 408 414 9660 Fax: +1 408 414 9760
www.powerint.com