



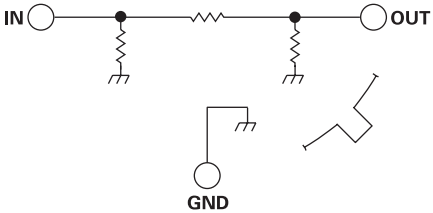
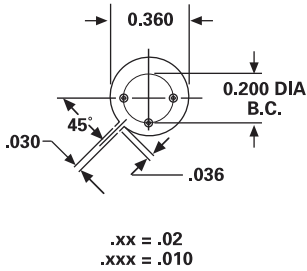
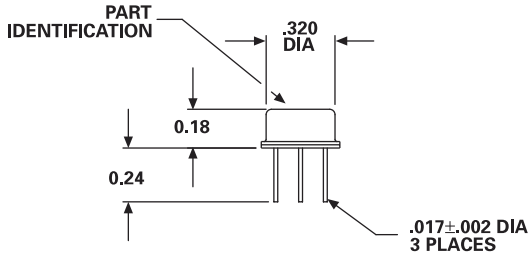
**MODEL NUMBER  
DA0960**

**Fixed Attenuator**

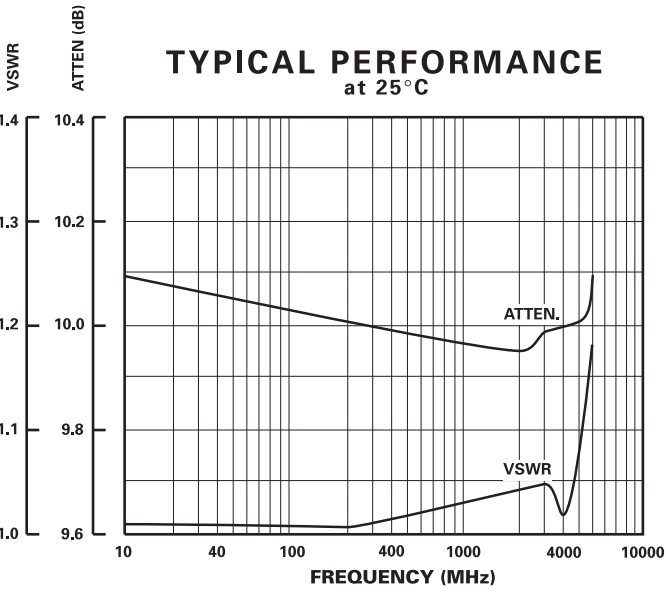
**FEATURES**

- DC-3000 MHz
- Fixed Attenuation Values
- Excellent VSWR
- 1 Watt CW
- Small Hermetic TO-5 Package

**Fixed**



PART NUMBER CHART	
PART NUMBER	FIXED ATTEN VALUE
DA0960-1	1 dB
DA0960-2	2 dB
DA0960-3	3 dB
DA0960-5	5 dB
DA0960-10	10 dB
DA0960-20	20 dB



**GUARANTEED PERFORMANCE**

Parameter	Min	Typ	Max	Units	Conditions
Operating Frequency	DC		3000	MHz	
Attenuation				dB	See Table
				dB	± (0.25 dB + 2% of Atten. Setting in dB)
VSWR		1.05/1	1.2/1		
Impedance		50		OHMS	
RF Power			+30	dBm	0.1 dB Compression
			+33	dBm	No Damage
Operating Temperature	-55	+25	+125	°C	TA