

## CEFA201 Thru CEFA203

Reverse Voltage: 50 - 400 Volts  
Forward Current: 2.0 Amp



### Features

- Ideal for surface mount applications
- Easy pick and place
- Plastic package has Underwriters Lab. flammability classification 94V-0
- Super fast recovery time for high efficient
- Built-in strain relief
- Low forward voltage drop

### Mechanical Data

- Case: JEDEC DO-214AC molded plastic
- Terminals: solderable per MIL-STD-750, method 2026
- Polarity: Color band denotes cathode end
- Mounting position: Any
- Approx. Weight: 0.063 gram



### Maximum Ratings and Electrical Characteristics

Parameter	Symbol	CEFA 201	CEFA 202	CEFA 203	Unit
Max. Repetitive Peak Reverse Voltage	V <sub>RRM</sub>	50	100	200	V
Max. DC Blocking Voltage	V <sub>DC</sub>	50	100	200	V
Max. RMS Voltage	V <sub>RMS</sub>	35	70	140	V
Peak Surge Forward Current 8.3ms single halfsine-wave superimposed on rate load ( JEDEC method)	I <sub>FSM</sub>	50			A
Max. Average Forward Current	I <sub>o</sub>	2.0			A
Max. Instantaneous Forward Current at 1.0 A	V <sub>F</sub>	0.92			V
Reverse recovery time	T <sub>rr</sub>	25			nS
Max. DC Reverse Current at Rated DC Blocking Voltage Ta=25°C Ta=100°C	I <sub>R</sub>	5.0 250			uA
Max. Thermal Resistance (Note 1)	R <sub>θJL</sub>	20			°C/W
Operating Junction Temperature	T <sub>j</sub>	-55 to +150			°C
Storage Temperature	T <sub>STG</sub>	-55 to +150			°C

Note 1: Thermal resistance from junction to lead P.C.B. Mounted on 8.0x8.0 mm copperpad areas.

## Rating and Characteristic Curves (CEFA201 Thru CEFA203)

Fig. 1 - Reverse Characteristics

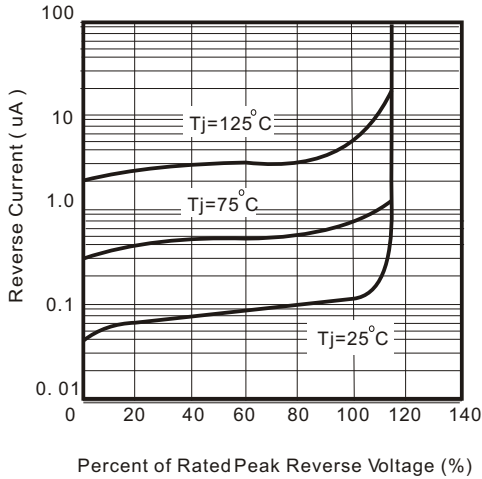


Fig.2 - Forward Characteristics

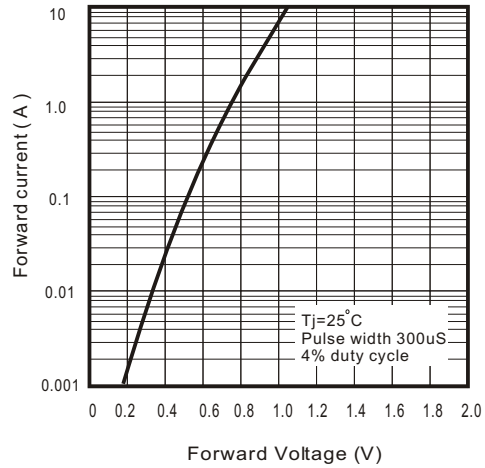


Fig. 3 - Current Derating Curve

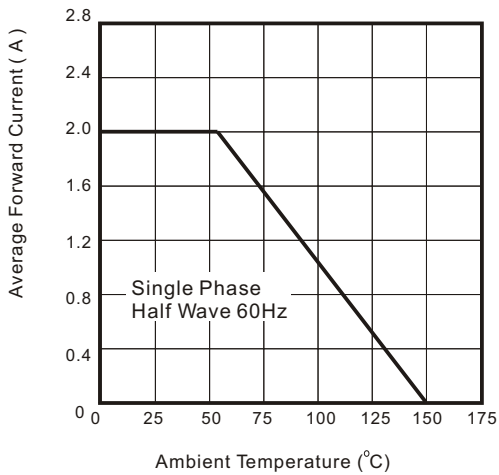


Fig. 4 - Non Repetitive Forward Surge Current

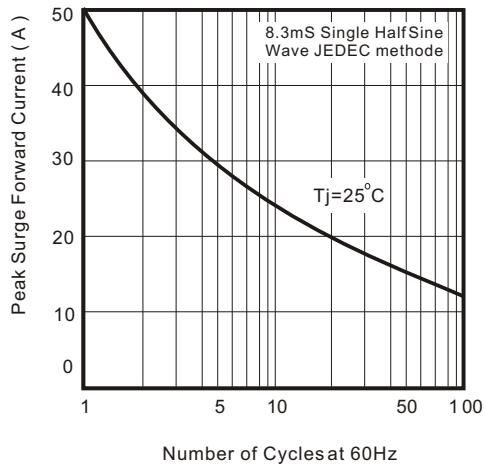
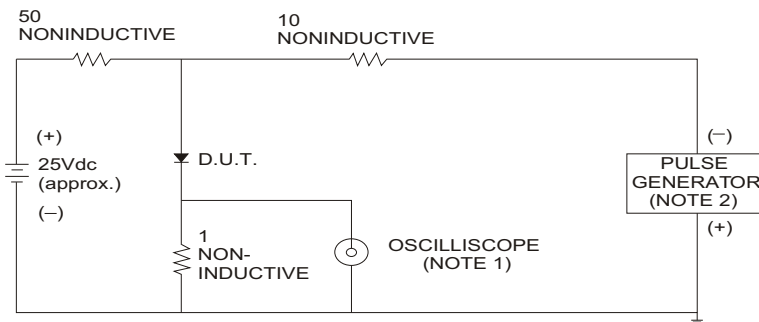


Fig. 5 - Test Circuit Diagram and Reverse Recovery Time Characteristics



- NOTES: 1. Rise Time= 7ns max., Input Impedance= 1 megohm.22pF.  
2. Rise Time= 10ns max., Source Impedance= 50 ohms.

