

LITHIUM/ SULFUR DIOXIDE PRIMARY BATTERY SYSTEM

BA-5112/U

NSN: 6135-01-235-4168

Physical Specifications

Weight:	.4 lbs; 183 gr.
Weight of Li:	3.2 gr.
Dimensions:	Figure 1
Battery Case:	Plastic

Electrical Specifications

Construction:	4 cells connected in series.	
Voltage:	Nominal OCV:	12.0 volts
	Max. OCV:	12.2 volts
	Nominal:	11.2 volts
	Cut-off:	8.0 volts
Rated Capacity (at 240 ma discharge):	70 F (21 C):	2.3 Ah
	-20 F (-29 C):	1.15 Ah
Fuse:	A slow blow .80 Amp non-replaceable fuse is incorporated in the negative leg.	
High Temperature Switch:	A normally closed high temperature switch or thermal fuse is incorporated in the negative leg. It will open at 91 ± 4 C (189 -196 F) and is non-resetable and non-replaceable.	
Diode:	A diode is incorporated in the negative leg to prevent charging or flow of current into the battery.	
CDD (Optional)	A device consisting of a manually activated switch and resistor designed to completely discharge the battery to 0 volts is built into the battery.	
Specifications:	SAFT Specifications	

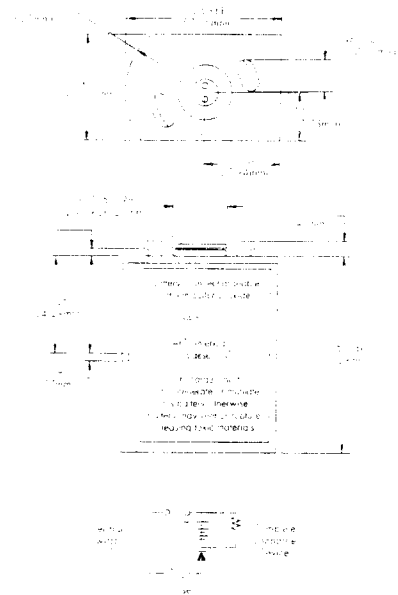
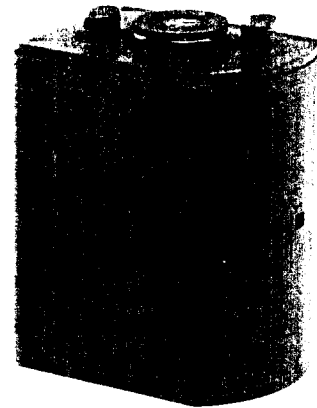


Figure 1. Overall Dimensions



BA-5112

Typical Application

AN/PRC-112

Radio

Figure 2: Typical Discharge Curves at 21°C

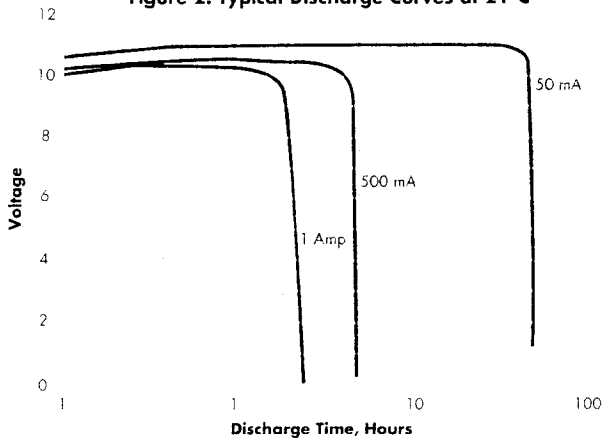


Figure 3: Typical 500mA Over Temperature Range

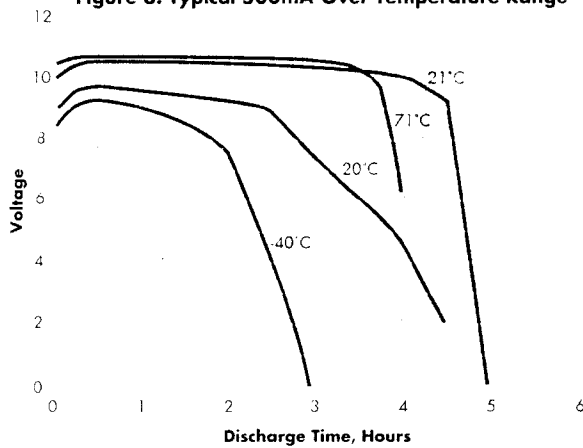


Figure 4: Typical Drain Rate vs Capacity

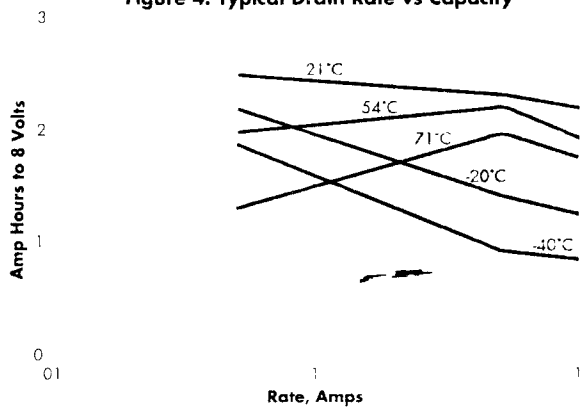
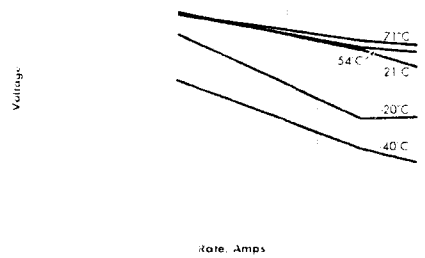


Figure 5: Typical Drain Rate vs Mid Life Voltage



SAFT America, Inc.
Lithium Battery Division
1000 West Greer • Irvine, CA 92614
714.261.1000 • Fax 714.261.1001