

Ring Core Chokes with Iron Powder Core

Rated voltage 250 Vac / 350 Vdc

Rated current 0,3 A to 3 A

Rated inductance 0,033 to 1,2 mH

Construction

- Ring core double choke with iron powder core
- Plastic case
- Complete resin potting


Features

- Case and potting flame-retardant as per UL 94 V-0
- High differential-mode attenuation
- Low stray inductance

Applications

- Attenuation of differential-mode interference
 - in entertainment electronics
 - in industrial machines


Terminals

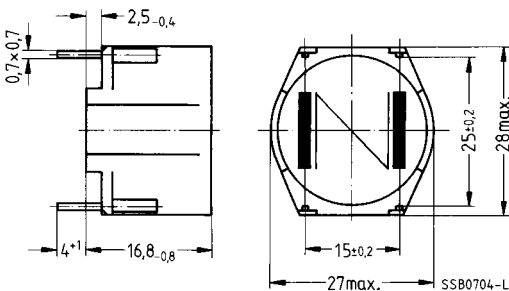
- Pins fitting standard PCB grid

Marking

Ordering code, rated inductance, rated voltage, rated current, dc resistance, manufacturer, date of manufacture

Approvals

Approval marks	Standards
	VDE 0565-2 UL 1283

Dimensional drawing


General technical data

Inductance tolerance	$\pm 20\%$
Rated current I_R	Referred to 50 Hz and + 40 °C ambient temperature
DC resistance R_{typ}	Typical value, measured at 20 °C ambient temperature
Climatic category	In accordance with IEC 60068-1 40/125/56 (- 40 °C/+ 125 °C/56 days damp heat test)
Weight	Approx. 15 g

For further technical data [see page 315](#)

Characteristics and ordering codes

I_R A	L_R μH	R_{typ} Ω	Ordering code
0,3	1200	2,1	B82623-G1-A3
0,5	1000	1,2	B82623-G1-A5
1	330	0,44	B82623-G1-A8
2	82	0,11	B82623-G1-A10
3	33	0,04	B82623-G1-A11

Impedance $|Z|$

versus frequency f

B82623-G1-

