



## PM/P/P Cores Halves/EP/TT/PR Cores

**Series/Type:** P 30 x 19

The following products presented in this data sheet are being withdrawn.

Ordering Code	Substitute Product	Date of Withdrawal	Deadline Last Orders	Last Shipments
B65702A50000000		2004-10-18	2005-03-31	2005-09-30
B65701D0000R026	B65701D0000R048	2002-08-02	2002-12-31	2003-03-31

For further information please contact your nearest EPCOS sales office, which will also support you in selecting a suitable substitute. The addresses of our worldwide sales network are presented at [www.epcos.com/sales](http://www.epcos.com/sales).

**P 30 × 19**

**Core**

**B65701**

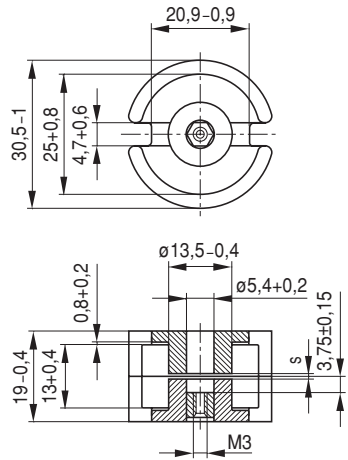
- In accordance with IEC 60133
- Pot cores are supplied in sets

**Magnetic characteristics (per set)**

	with center hole	without center hole	
$\Sigma I/A$	0,33	0,32	mm <sup>-1</sup>
$l_e$	45	46	mm
$A_e$	136	145	mm <sup>2</sup>
$A_{min}$	—	117	mm <sup>2</sup>
$V_e$	6 100	6 670	mm <sup>3</sup>

**Approx. weight (per set)**

<i>m</i>	36	37	g



**Gapped**

Material	$A_L$ value nH	<i>s</i> approx. mm	$\mu_e$	Ordering code <sup>1)</sup> -D with center hole -T with threaded sleeve
N48	250 ± 2 %	0,72	66	B65701-+250-G48
	400 ± 2 %	0,40	105	B65701-+400-A48
	630 ± 3 %	0,22	166	B65701-+630-A48
	1000 ± 3 %	0,12	263	B65701-+1000-A48
	2000 ± 5 %	0,05	525	B65701-D2000-J48

**Ungapped**

Material	$A_L$ value nH	$\mu_e$	$A_{L1min}$ nH	$P_V$ W/set	Ordering code -D with center hole -W without center hole
N26	6200 + 30/- 20 %	1630			B65701-D-R26
N87	6400 + 30/- 20 %	1630	3800	< 2,5 (200 mT, 100 kHz, 100 °C)	B65701-W-R87
N30	11500 + 30/- 20 %	2930			B65701-W-R30
T38	28000 + 40/- 30 %	7130			B65701-W-Y38

1) Replace the + by the code letter "D" or "T" for the required version.

**Coil former**

Standard: to IEC 60133

Material: GFR polyterephthalate (UL 94 V-0, insulation class to IEC 60085:

F  $\triangleq$  max. operating temperature 155 °C), color code black

Winding: see “Processing Notes”, page 155

**Insulating washer 1** between core and coil former

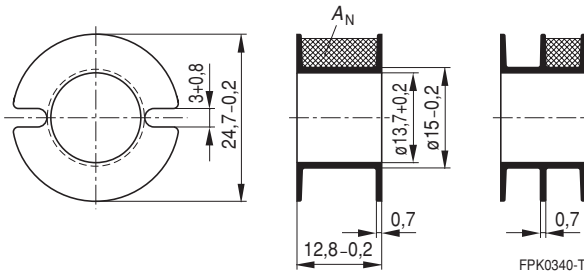
- For tolerance compensation and for insulation
- Polycarbonate spring washer (UL 94 V-0, insulation class to IEC 60085: E  $\triangleq$  120°C), 0,06 mm thick

**Insulating washer 2** between core and terminal carrier

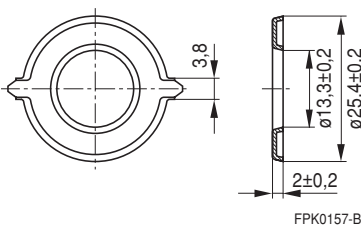
- For increased dielectric strength
- Made of polycarbonate (UL 94 V-0, insulation class to IEC 60085: E  $\triangleq$  120°C), 0,08 mm thick

Coil former				Ordering code
Sections	$A_N$ mm <sup>2</sup>	$l_N$ mm	$A_R$ value $\mu\Omega$	
1	48	60	46	B65702-B-T1
2	45	60	49	B65702-B-T2
Insulating washer 1 (reel packing, PU = 1 reel)				B65702-A5000
Insulating washer 2 (bulk)				B65702-A5002

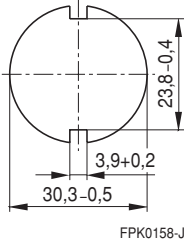
**Coil former**



**Insulating washer 1**



**Insulating washer 2**



### Mounting assembly for printed circuit boards

- The set comprises a terminal carrier and a yoke
- For snap-in connection

#### Terminal carrier

Material: GFR polyterephthalate (UL 94 V-0, insulation class to IEC 85: F  $\triangleq$  max. operating temperature 155 °C), color code gray

Solderability: to IEC 68-2-20, test Ta, method 1 (aging 3): 235 °C, 2 s

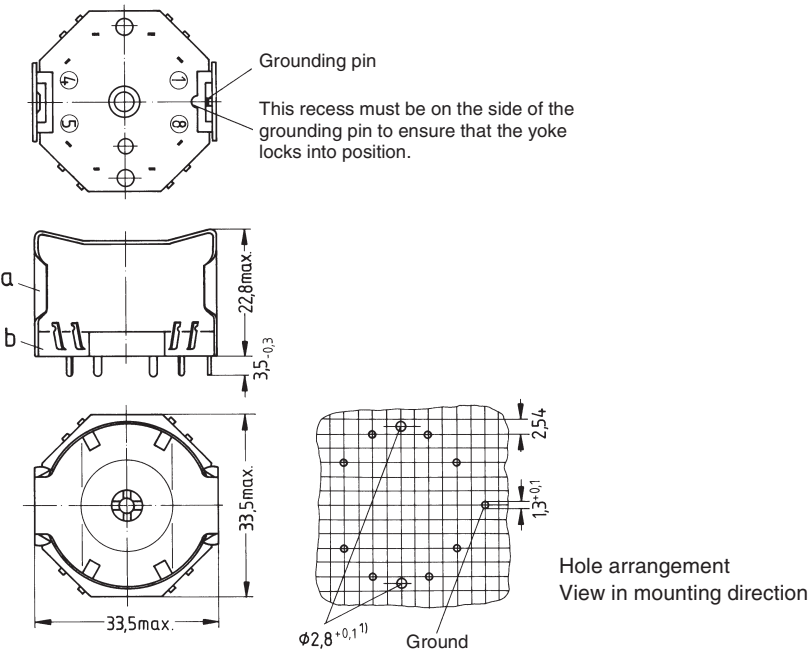
Resistance to soldering heat: to IEC 68-2-20, test Tb, method 1B: 350 °C, 3,5 s

#### Yoke

Spring yoke, made of tinned nickel silver (0,5 mm), with ground terminal

Complete mounting assembly (8 solder terminals)

Ordering code: B65705-B3



FPK0159-S

- 1) The 2,8 mm hole is only necessary for additional fixing with M 2,5 screw.
- a) Yoke
- b) Terminal carrier with 8 solder terminals

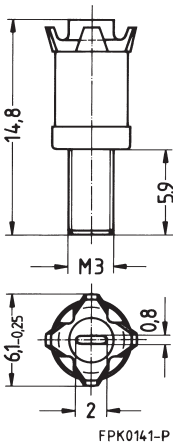
<b>P 30 × 19</b>	<b>B63399</b>
<b>Accessories</b>	<b>B65679</b>

### Adjusting screw

- Tube core with thread and core brake made of GFR polyterephthalate
- Plastic **adjusting screwdriver** (not shown)
- Plastic **handle** for adjusting screwdriver (not shown)

Core P 30 × 19		Adjusting screw			Min. adjusting range %	Ordering code
Material	A <sub>L</sub> value nH	Tube core ∅ × length mm	Material	Color code		
N 48	250	4,55 × 6,3	N 22	red	16	B65679-E3-X22
	400	4,98 × 6,3	N 22	black	18	B65679-E2-X22
	630	5,15 × 6,3	N 22	white	11	B65679-E1-X22
	1000				10	
<b>Adjusting screwdriver</b>						B63399-B1
<b>Handle</b>						B63399-B5

### Adjusting screw <sup>1)</sup>



1) Due to the limited distance between adjusting screw and internal borehole, the entire assembly must be accurately centered.

**Herausgegeben von EPCOS AG**

**Marketing Kommunikation, Postfach 80 17 09, 81617 München, DEUTSCHLAND**

© EPCOS AG 2000. Alle Rechte vorbehalten. Vervielfältigung, Veröffentlichung, Verbreitung und Verwertung dieser Broschüre und ihres Inhalts ohne ausdrückliche Genehmigung der EPCOS AG nicht gestattet.

Mit den Angaben in dieser Broschüre werden die Bauelemente spezifiziert, keine Eigenschaften zugesichert. Bestellungen unterliegen den vom ZVEI empfohlenen Allgemeinen Lieferbedingungen für Erzeugnisse und Leistungen der Elektroindustrie, soweit nichts anderes vereinbart wird.

Diese Broschüre ersetzt die vorige Ausgabe.

Fragen über Technik, Preise und Liefermöglichkeiten richten Sie bitte an den Ihnen nächstgelegenen Vertrieb der EPCOS AG oder an unsere Vertriebsgesellschaften im Ausland.

Bauelemente können aufgrund technischer Erfordernisse Gefahrstoffe enthalten. Auskünfte darüber bitten wir unter Angabe des betreffenden Typs ebenfalls über die zuständige Vertriebsgesellschaft einzuholen.

**Published by EPCOS AG**

**Marketing Communications, P.O. Box 80 17 09, 81617 Munich, GERMANY**

© EPCOS AG 2000. All Rights Reserved. Reproduction, publication and dissemination of this brochure and the information contained therein without EPCOS' prior express consent is prohibited.

The information contained in this brochure describes the type of component and shall not be considered as guaranteed characteristics. Purchase orders are subject to the General Conditions for the Supply of Products and Services of the Electrical and Electronics Industry recommended by the ZVEI (German Electrical and Electronic Manufacturers' Association), unless otherwise agreed.

This brochure replaces the previous edition.

For questions on technology, prices and delivery please contact the Sales Offices of EPCOS AG or the international Representatives.

Due to technical requirements components may contain dangerous substances. For information on the type in question please also contact one of our Sales Offices.