

SWITCHING  
N-CHANNEL POWER MOS FET  
INDUSTRIAL USE

## DESCRIPTION

The 2SK1749 is N-channel MOS Field Effect Transistor designed for solenoid, motor and lamp driver.

## FEATURES

- Low On-state Resistance  
 $R_{DS(on)} \leq 18 \text{ m}\Omega$  ( $V_{GS} = 10 \text{ V}$ ,  $I_D = 25 \text{ A}$ )  
 $R_{DS(on)} \leq 25 \text{ m}\Omega$  ( $V_{GS} = 4 \text{ V}$ ,  $I_D = 25 \text{ A}$ )
- Low  $C_{iss}$   $C_{iss} = 5.400 \text{ pF TYP.}$
- Built-in G-S Gate Protection Diode

## QUALITY GRADE

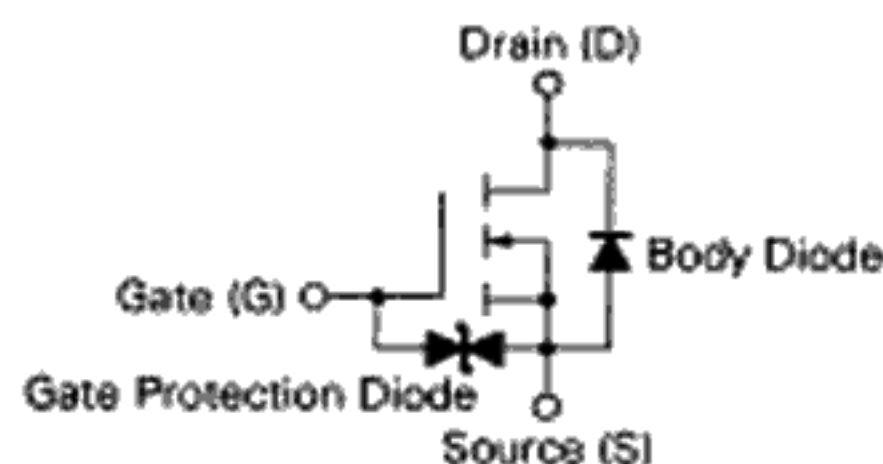
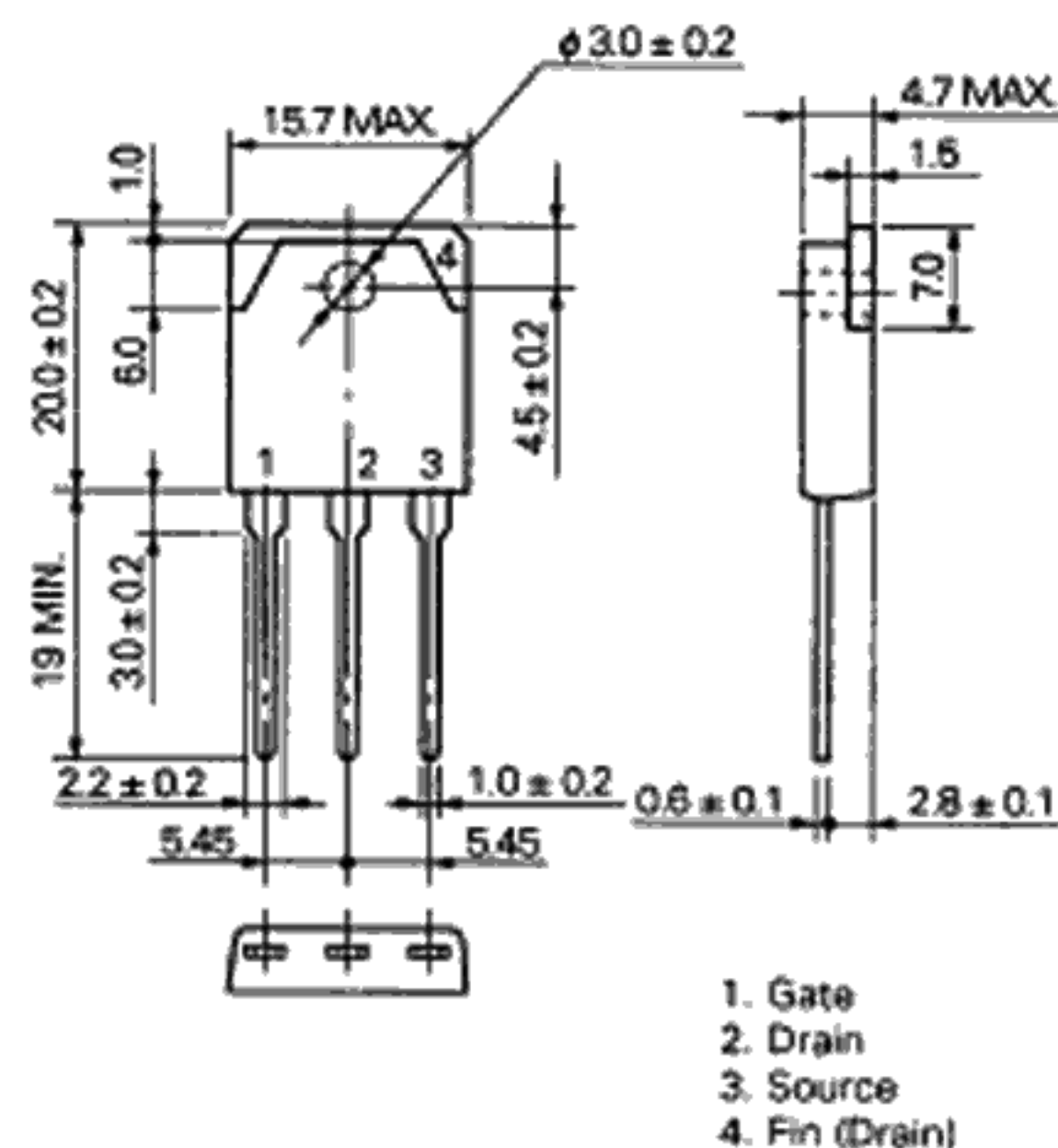
Standard

Please refer to "Quality grade on NEC Semiconductor Devices" (Document number IEI-1209) published by NEC Corporation to know the specification of quality grade on the devices and its recommended applications.

ABSOLUTE MAXIMUM RATINGS ( $T_a = 25^\circ\text{C}$ )

Drain to Source Voltage	$V_{DSS}$	60	V
Gate to Source Voltage	$V_{GSS(AC)}$	$\pm 20$	V
Drain Current (DC)	$I_{D(DC)}$	$\pm 50$	A
Drain Current (pulse)	$I_{D(pulse)}$ *	$\pm 200$	A
Total Power Dissipation ( $T_c = 25^\circ\text{C}$ )	$PT_1$	150	W
Total Power Dissipation ( $T_a = 25^\circ\text{C}$ )	$PT_2$	3.0	W
Channel Temperature	$T_{ch}$	150	$^\circ\text{C}$
Storage Temperature	$T_{stg}$	-55 to +150	$^\circ\text{C}$

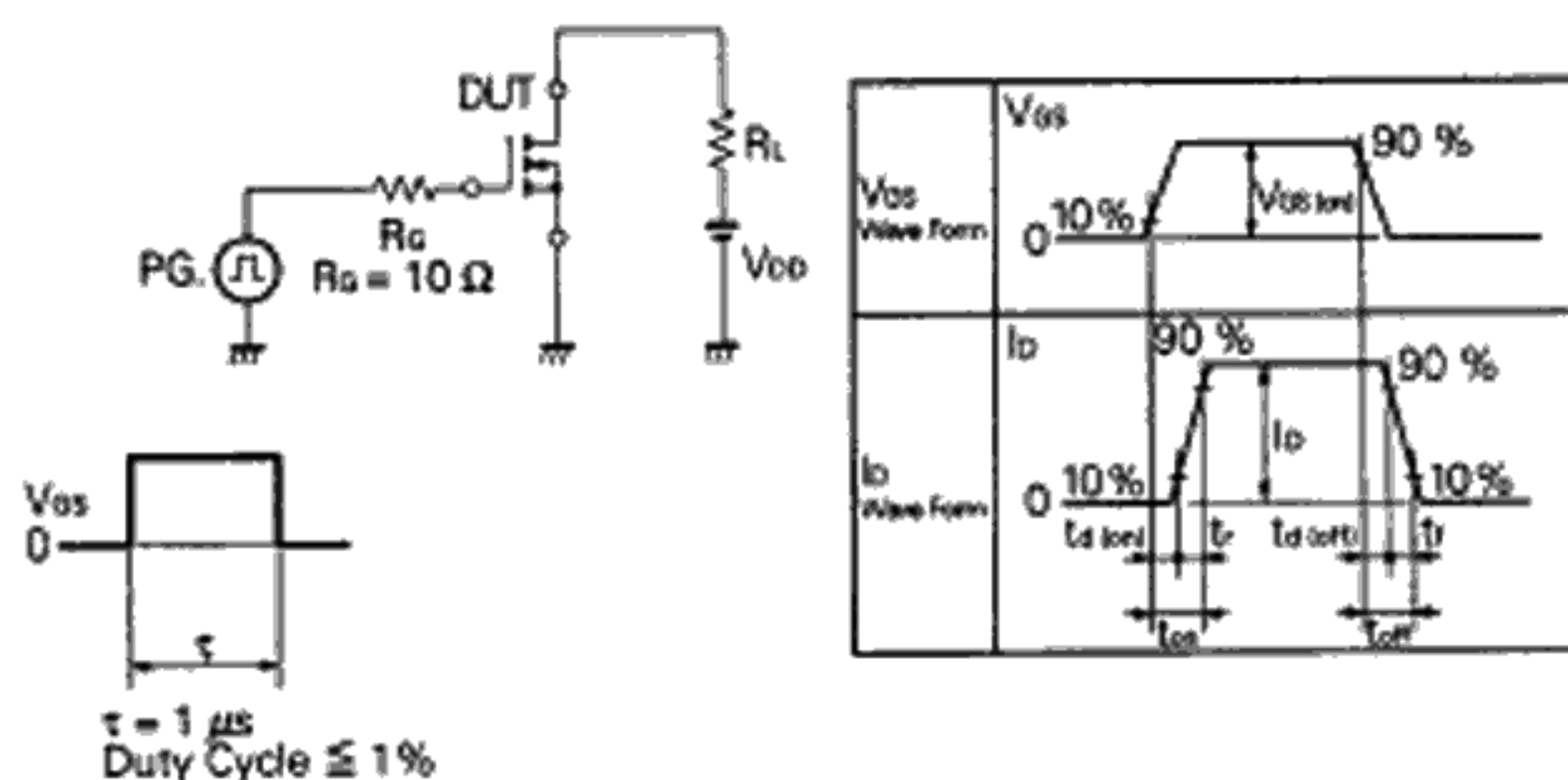
\*  $PW \leq 10 \mu\text{s}$ , Duty Cycle  $\leq 1\%$

PACKAGE DIMENSIONS  
(in millimeters)

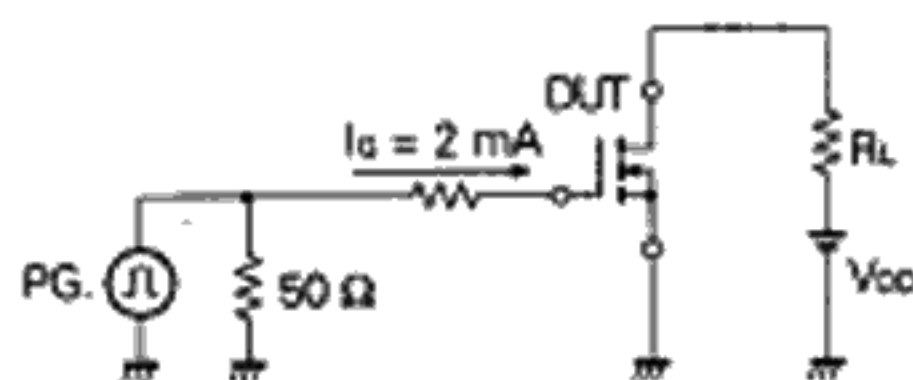
**ELECTRICAL CHARACTERISTICS (T<sub>a</sub> = 25 °C)**

CHARACTERISTIC	SYMBOL	MIN.	TYP.	MAX.	UNIT	TEST CONDITIONS
Drain to Source On-state Resistance	R <sub>DS(on)</sub>		15	18	mΩ	V <sub>GS</sub> = 10 V, I <sub>D</sub> = 25 A
Drain to Source On-state Resistance	R <sub>DS(on)</sub>		20	25	mΩ	V <sub>GS</sub> = 4 V, I <sub>D</sub> = 25 A
Gate to Source Cutoff Voltage	V <sub>GS(off)</sub>	1.0		2.5	V	V <sub>DS</sub> = 10 V, I <sub>D</sub> = 1 mA
Forward Transfer Admittance	y <sub>fs</sub>	20			S	V <sub>DS</sub> = 10 V, I <sub>D</sub> = 25 A
Drain Leakage Current	I <sub>DSS</sub>			10	μA	V <sub>GS</sub> = 60 V, V <sub>DS</sub> = 0
Gate to Source Leakage Current	I <sub>GSS</sub>			±10	μA	V <sub>GS</sub> = ±20 V, V <sub>DS</sub> = 0
Input Capacitance	C <sub>iss</sub>		5 500		pF	V <sub>DS</sub> = 10 V V <sub>GS</sub> = 0 f = 1 MHz
Output Capacitance	C <sub>oss</sub>		2 600		pF	
Reverse Transfer Capacitance	C <sub>res</sub>		1 100		pF	
Turn-On Delay Time	t <sub>d(on)</sub>		80		ns	V <sub>GS(boot)</sub> = 10 V V <sub>DS</sub> = 30 V I <sub>D</sub> = 25 A, R <sub>G</sub> = 10 Ω R <sub>L</sub> = 1.2 Ω
Rise Time	t <sub>r</sub>		500		ns	
Turn-Off Delay Time	t <sub>d(off)</sub>		450		ns	
Fall Time	t <sub>f</sub>		380		ns	
Diode Forward Voltage	V <sub>SD</sub>		1.5		V	I <sub>F</sub> = 50 A, V <sub>GS</sub> = 0
Reverse Recovery Time	t <sub>rr</sub>		150		ns	I <sub>F</sub> = 50 A, V <sub>GS</sub> = 0
Reverse Recovery Charge	Q <sub>rr</sub>		280		nC	di/dt = 50 A/μs

**Test Circuit 1: Switching Time**

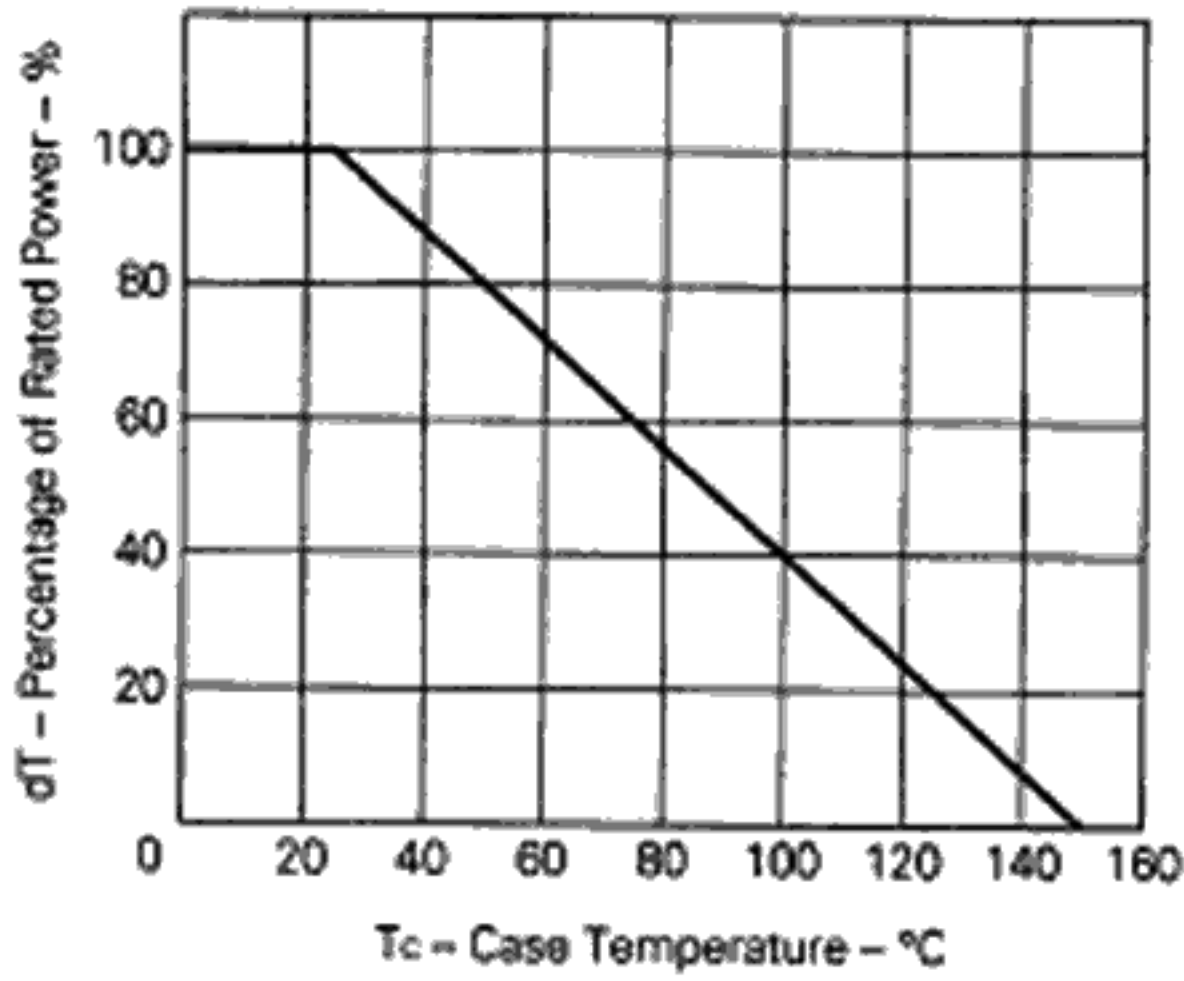


**Test Circuit 2: Gate Charge**

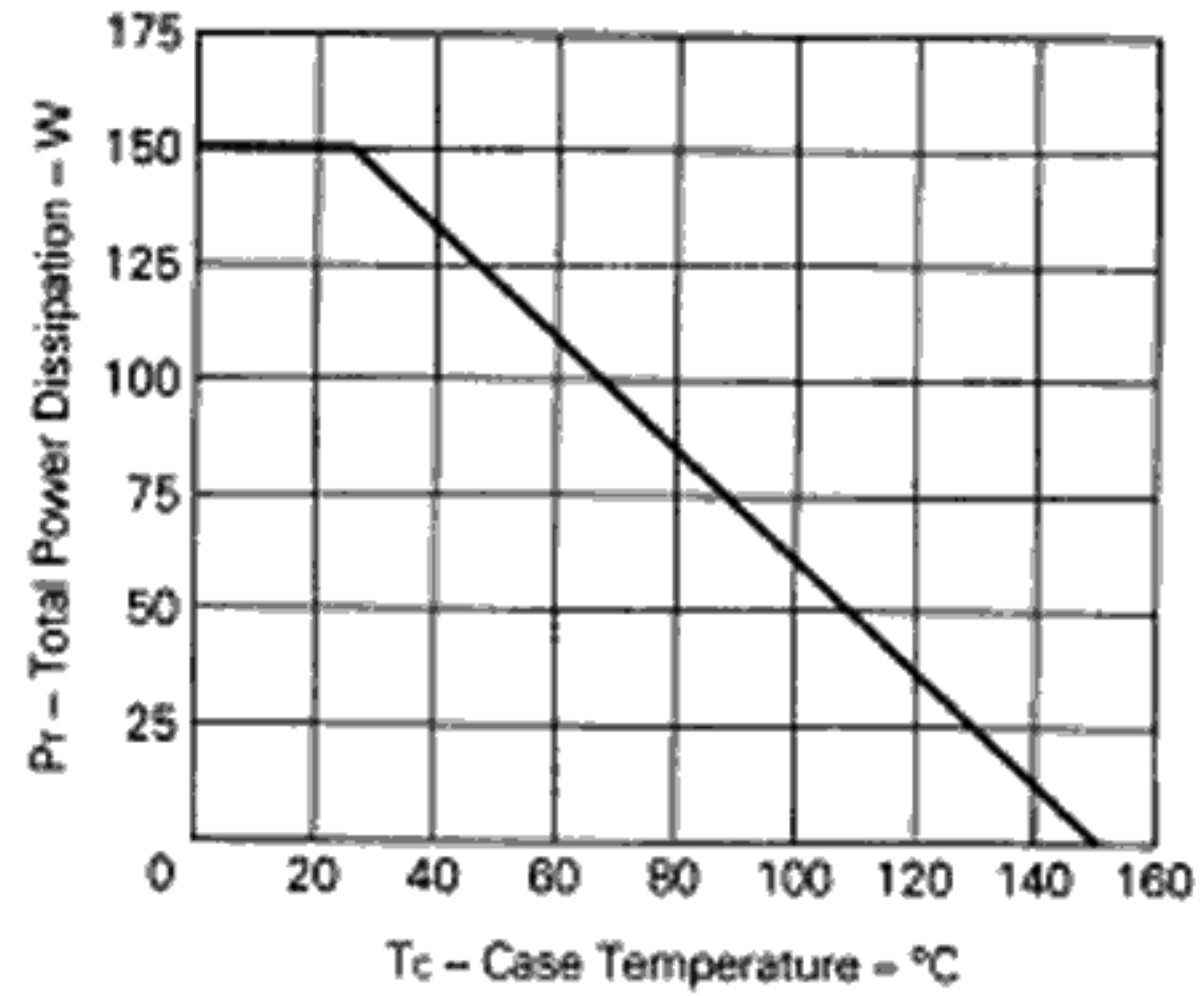


TYPICAL CHARACTERISTICS ( $T_a = 25^\circ\text{C}$ )

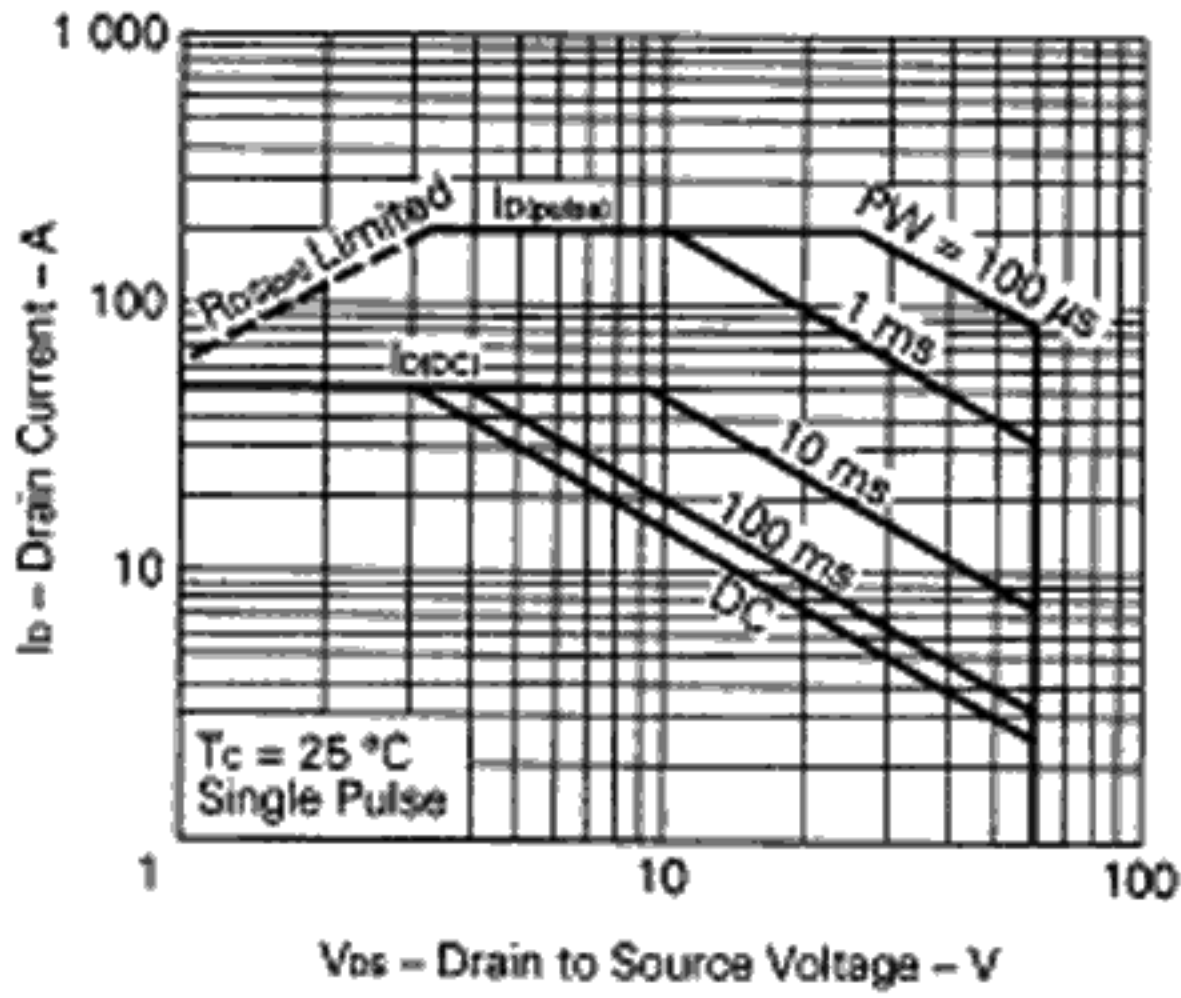
DERATING FACTOR OF FORWARD BIAS SAFE OPERATING AREA



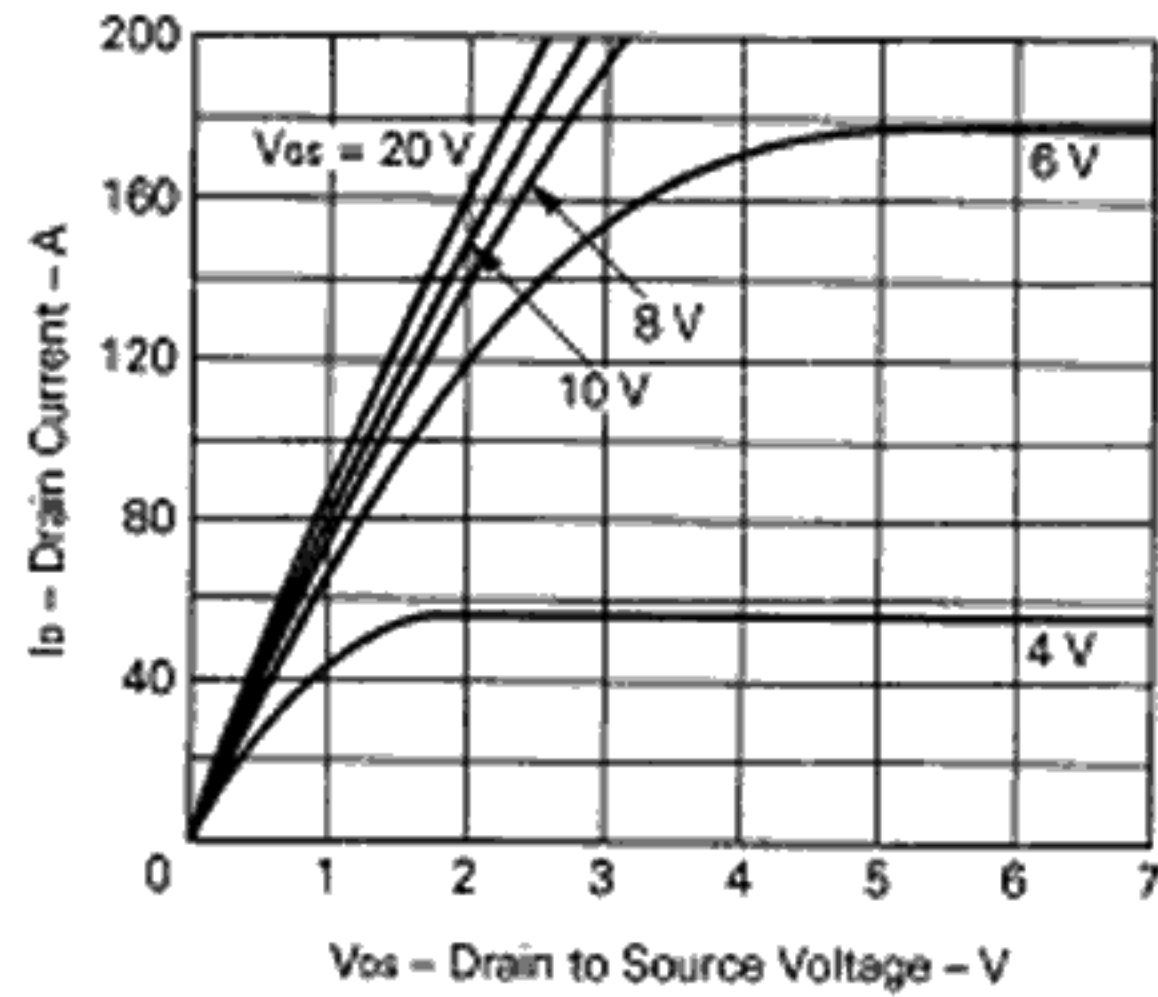
TOTAL POWER DISSIPATION vs. CASE TEMPERATURE



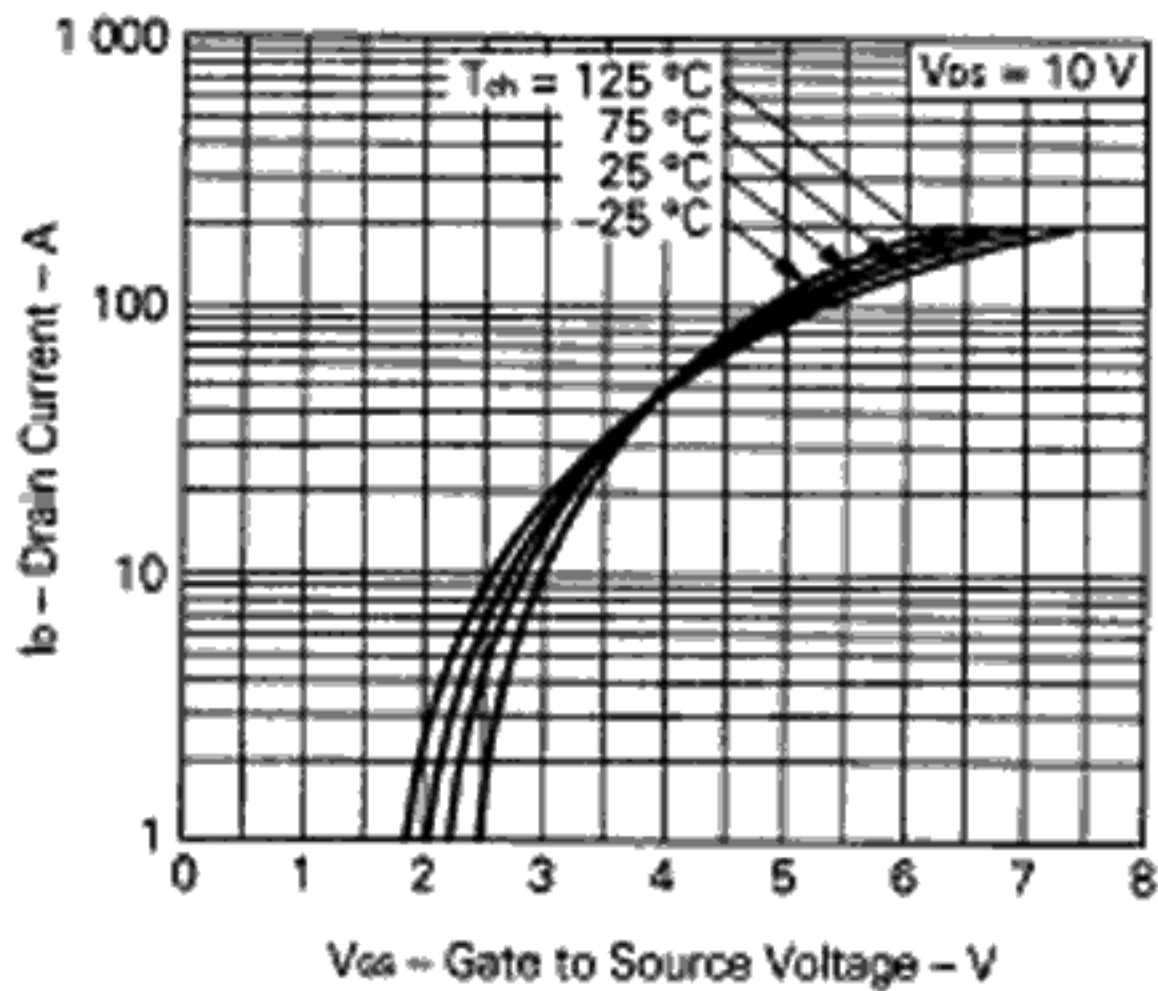
FORWARD BIAS SAFE OPERATING AREA



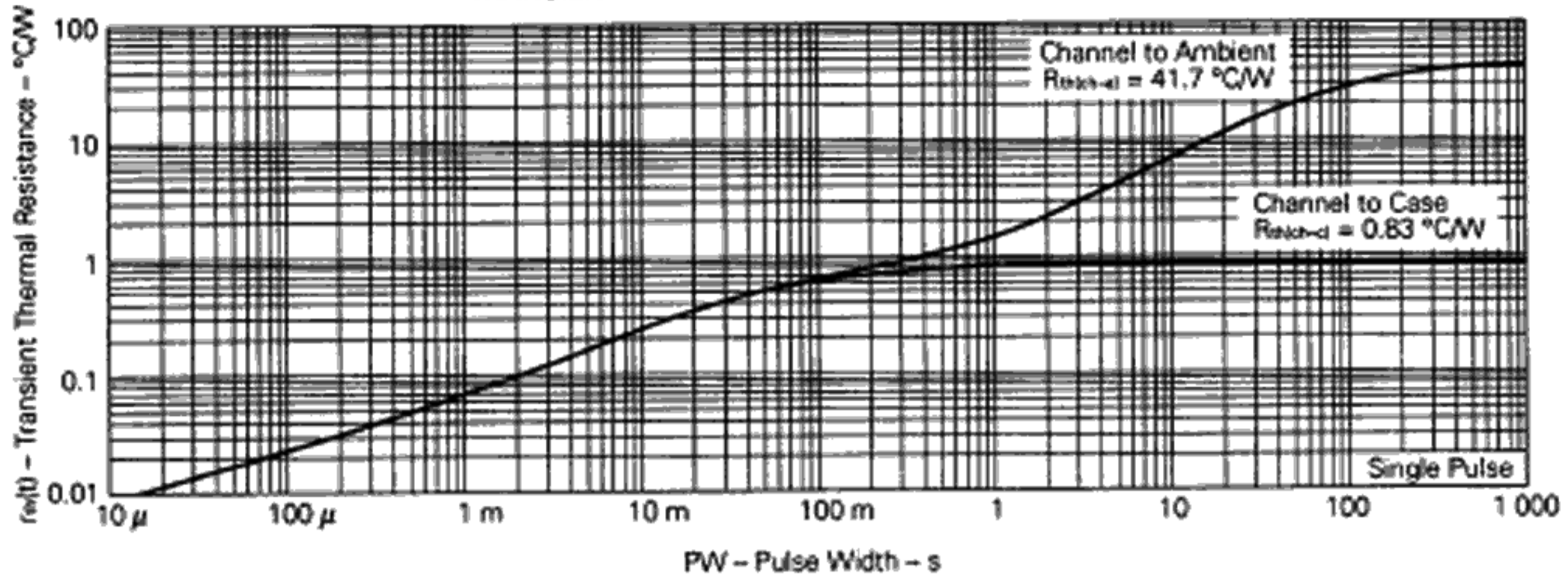
DRAIN CURRENT vs. DRAIN TO SOURCE VOLTAGE



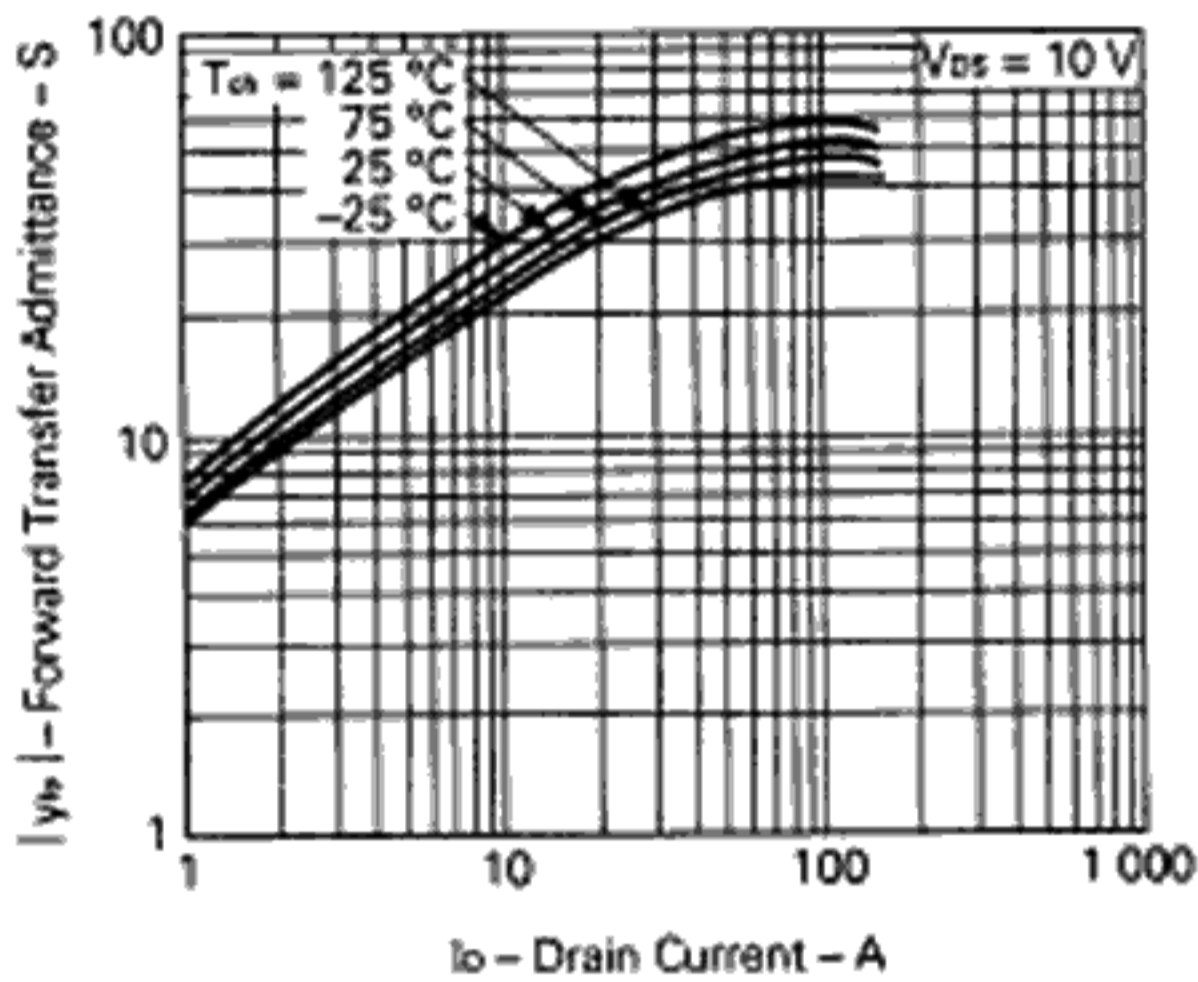
TRANSFER CHARACTERISTICS



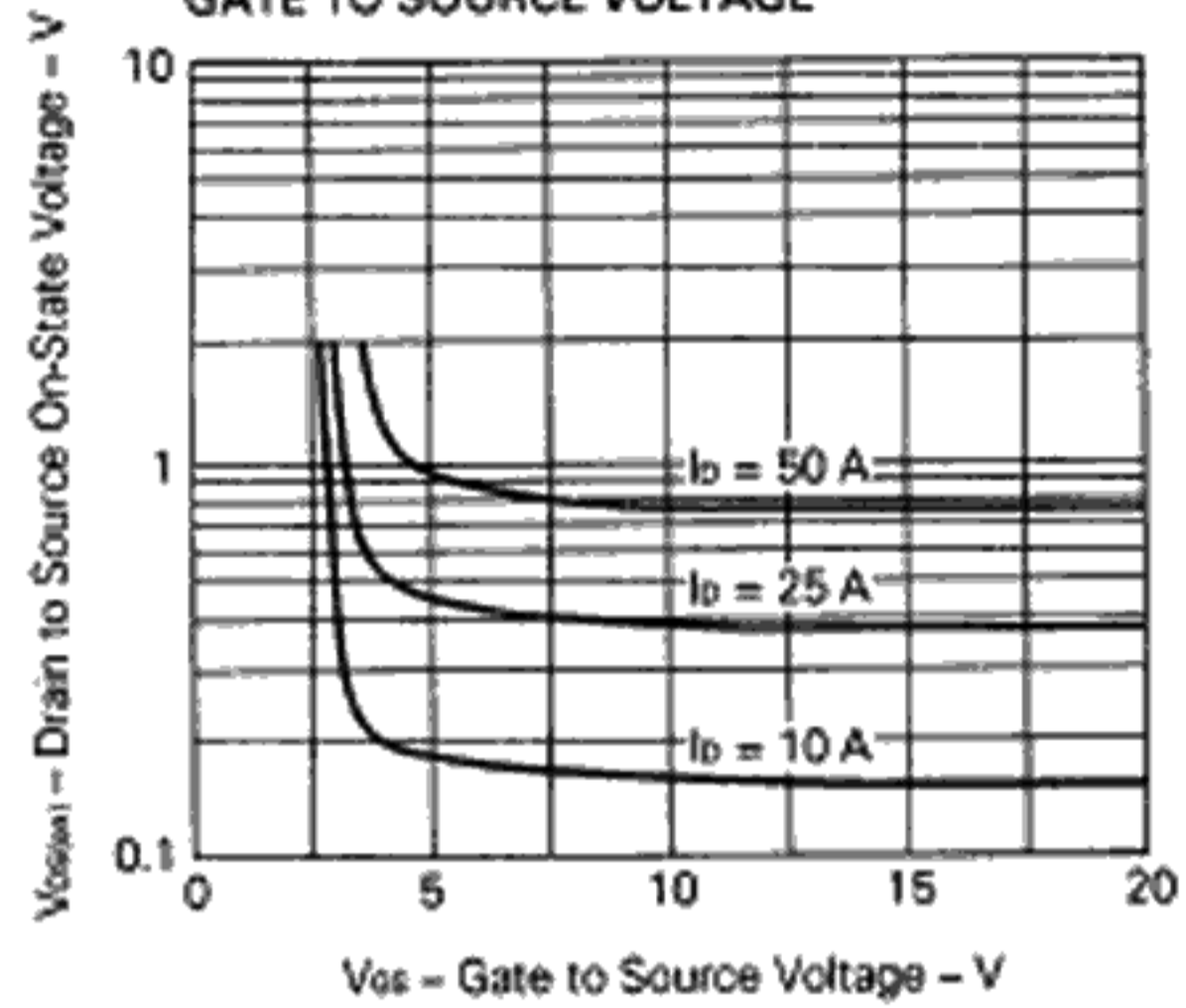
TRANSIENT THERMAL RESISTANCE vs. PULSE WIDTH



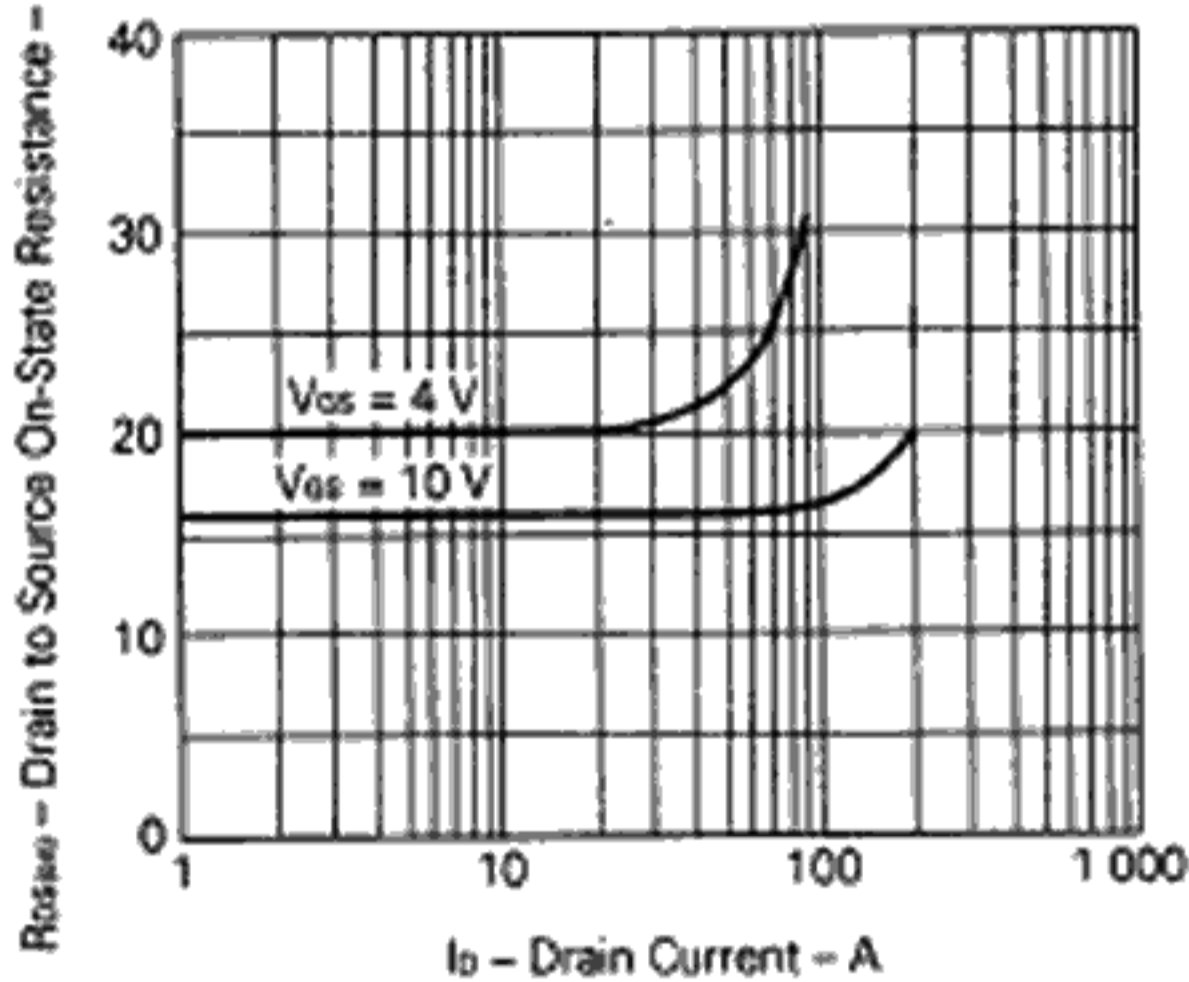
FORWARD TRANSFER ADMITTANCE vs. DRAIN CURRENT



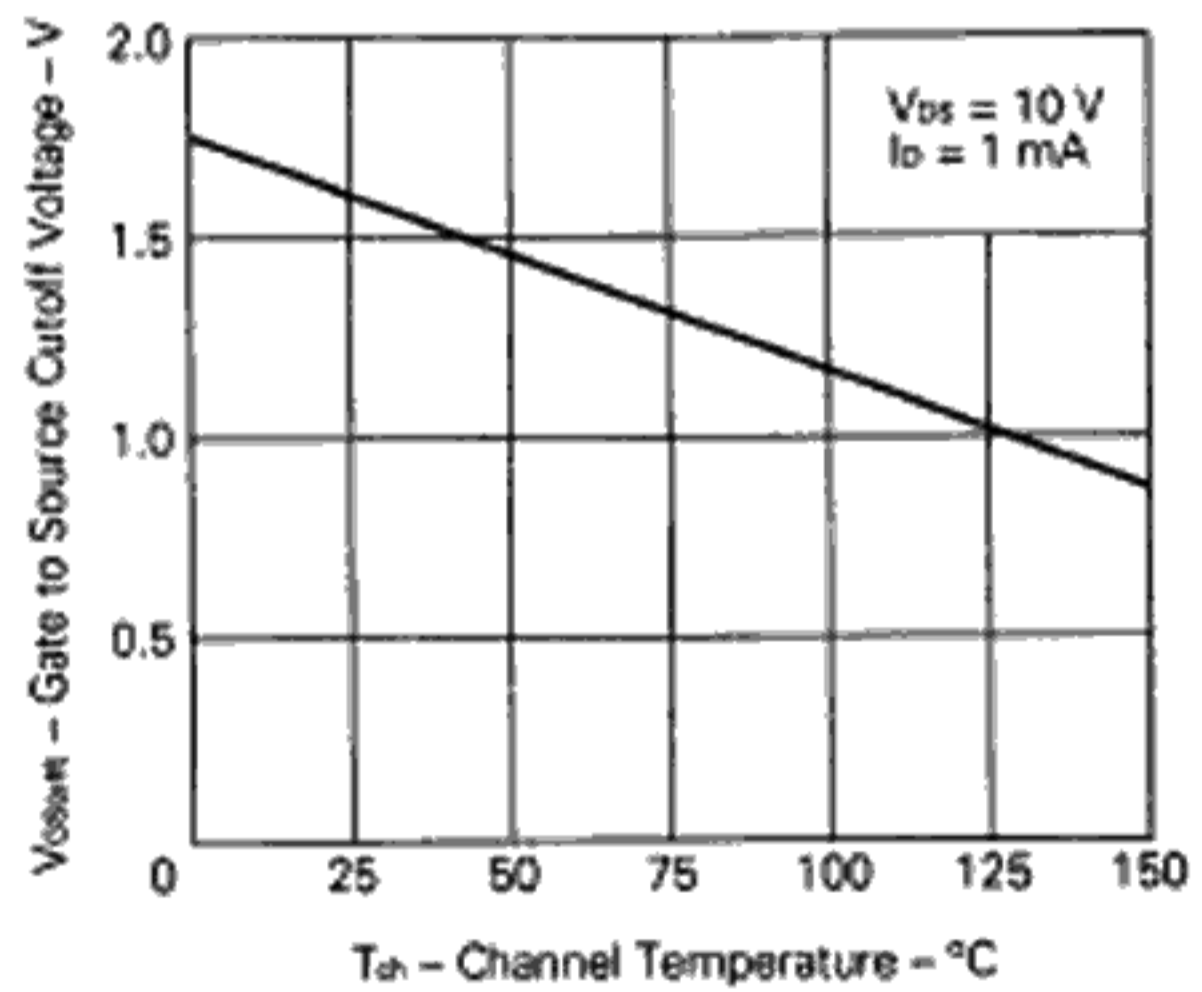
DRAIN TO SOURCE ON-STATE VOLTAGE vs. GATE TO SOURCE VOLTAGE

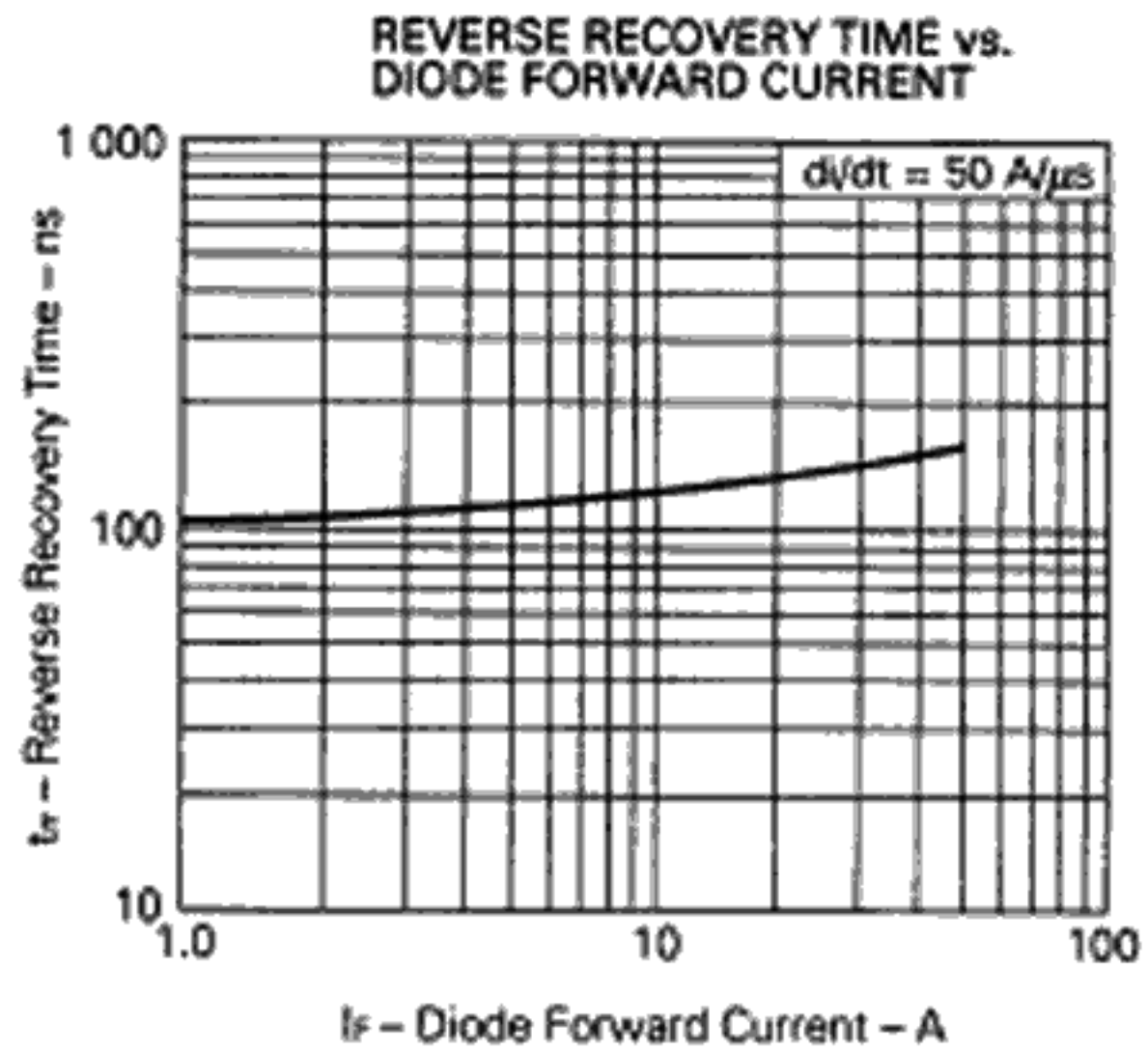
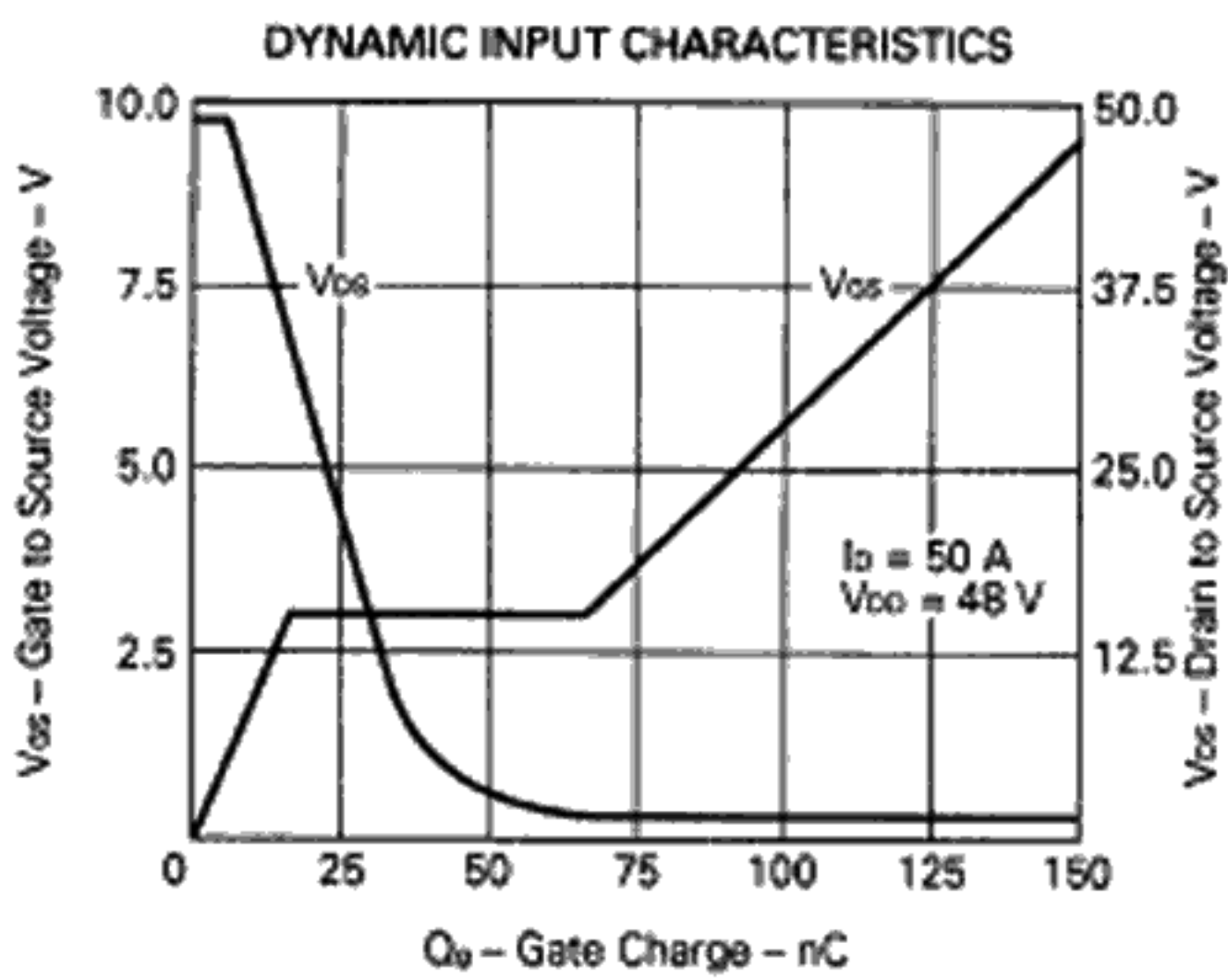
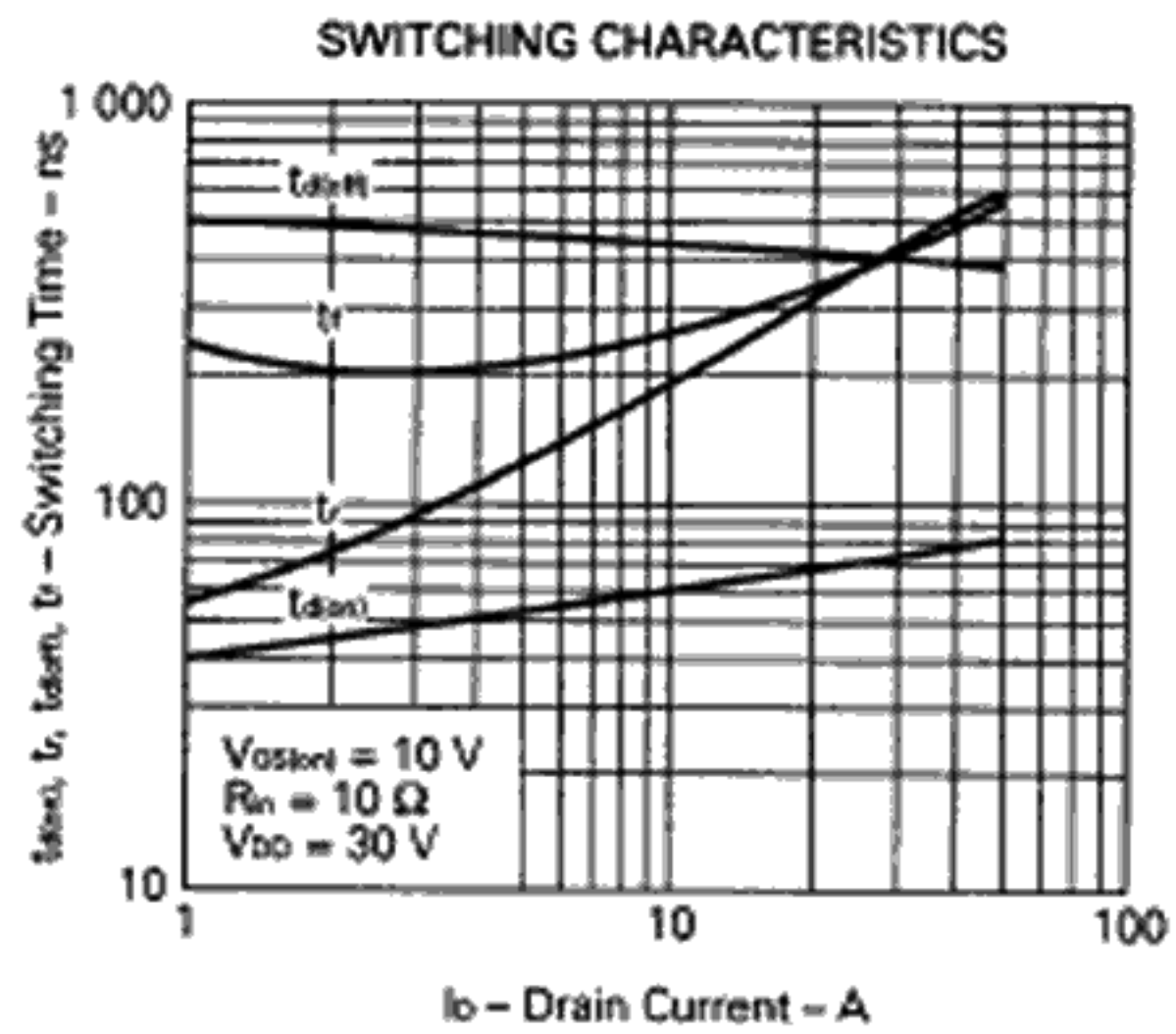
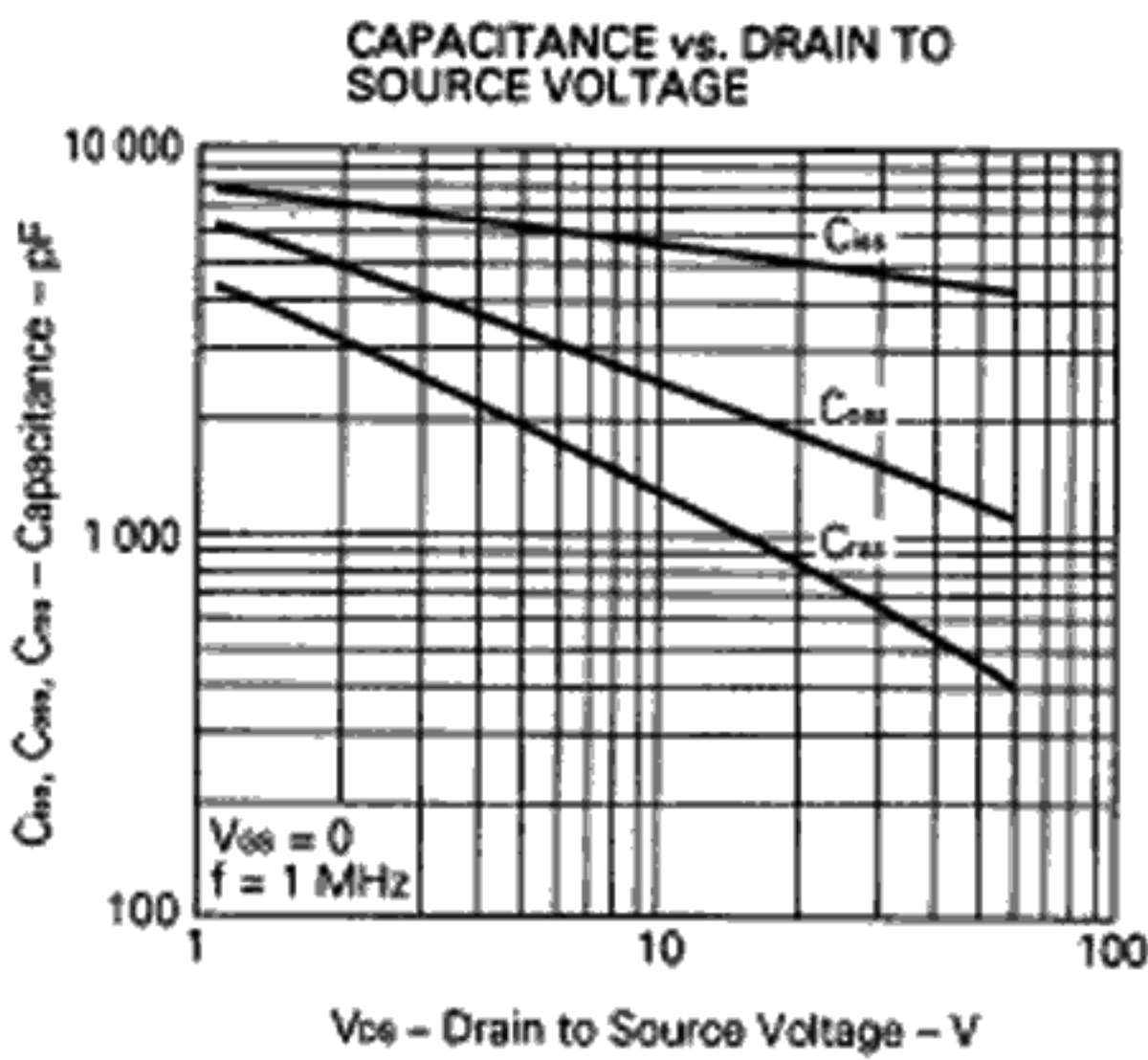
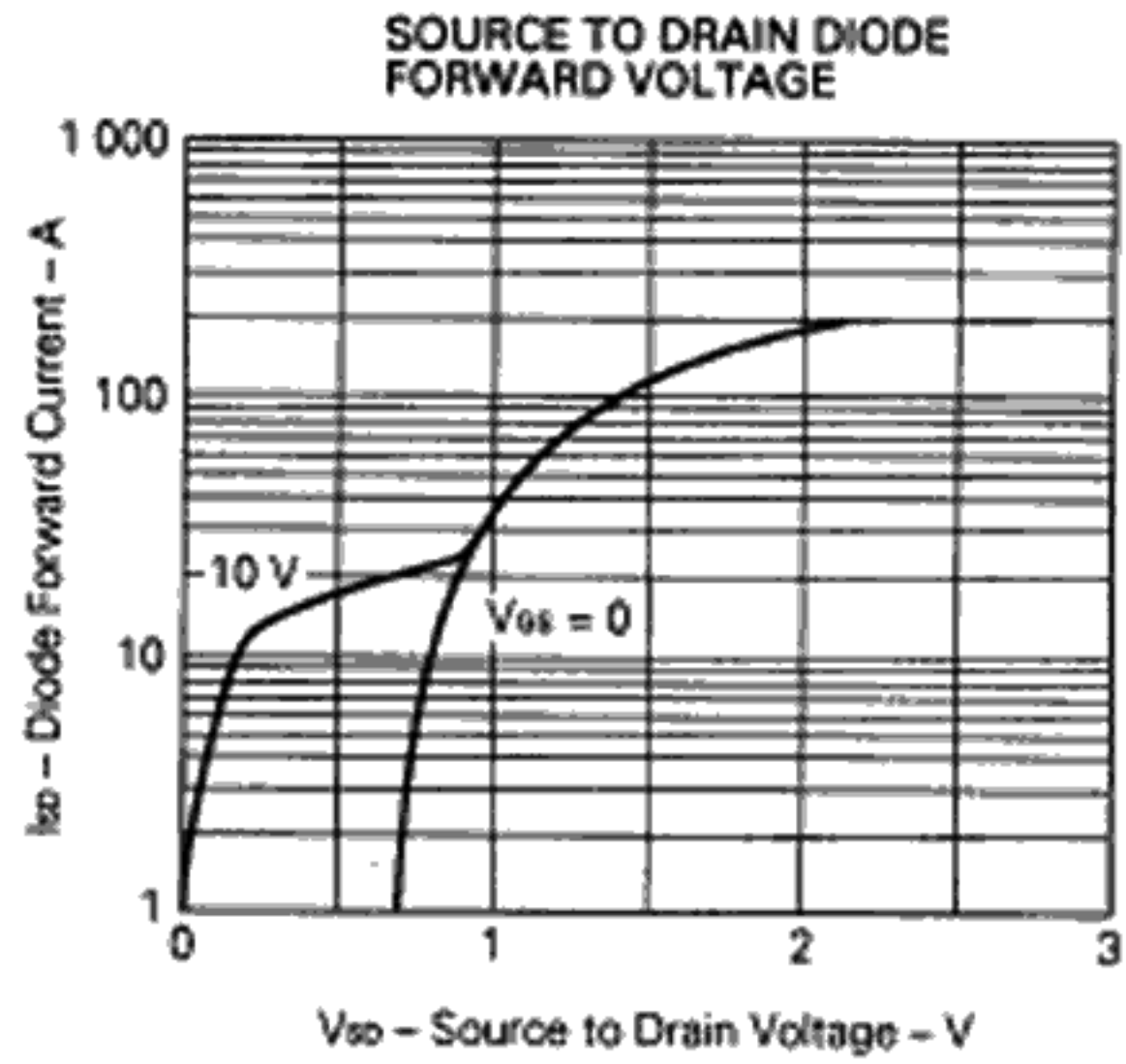
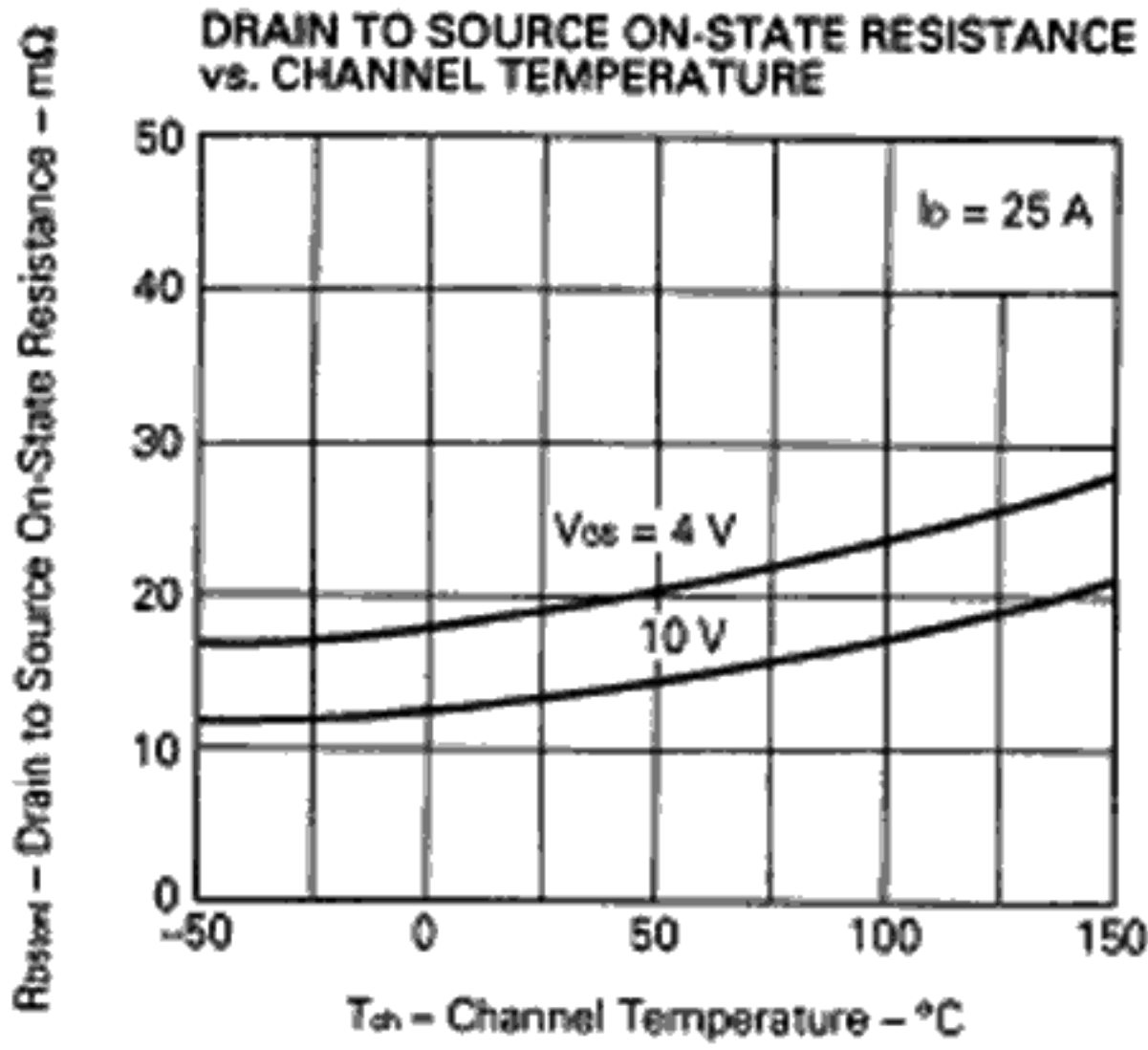


DRAIN TO SOURCE ON-STATE RESISTANCE vs. DRAIN CURRENT



GATE TO SOURCE CUTOFF VOLTAGE vs. CHANNEL TEMPERATURE





**Reference**

Application note name	No.
Safe operating area of Power MOS FET.	TEA-1034
Application circuit using Power MOS FET.	TEA-1035
Quality control of NEC semiconductors devices.	TEI-1202
Quality control guide of semiconductors devices.	MEI-1202
Assembly manual of semiconductors devices.	IEI-1207

No part of this document may be copied or reproduced in any form or by any means without the prior written consent of NEC Corporation. NEC Corporation assumes no responsibility for any errors which may appear in this document.

NEC Corporation does not assume any liability for infringement of patents, copyrights or other intellectual property rights of third parties by or arising from use of a device described herein or any other liability arising from use of such device. No license, either express, implied or otherwise, is granted under any patents, copyrights or other intellectual property rights of NEC Corporation or others.

The devices listed in this document are not suitable for use in aerospace equipment, submarine cables, nuclear reactor control systems and life support systems. If customers intend to use NEC devices for above applications or they intend to use "Standard" quality grade NEC devices for applications not intended by NEC, please contact our sales people in advance.

Application examples recommended by NEC Corporation.

Standard: Computer, Office equipment, Communication equipment, Test and Measurement equipment, Machine tools, Industrial robots, Audio and Visual equipment, Other consumer products, etc.

Special: Automotive and Transportation equipment, Traffic control systems, Antidisaster systems, Anticrime systems, etc.