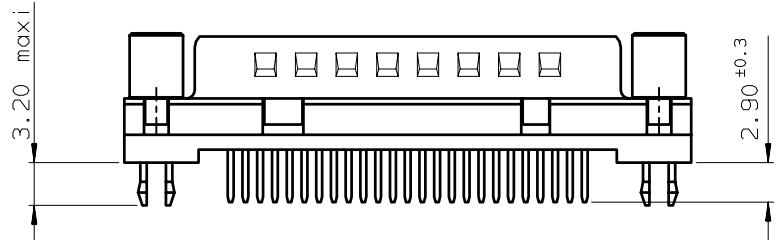
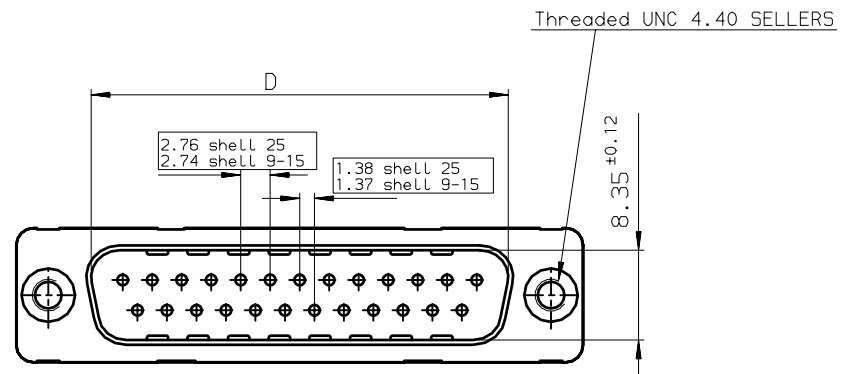
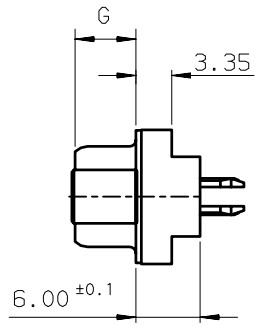
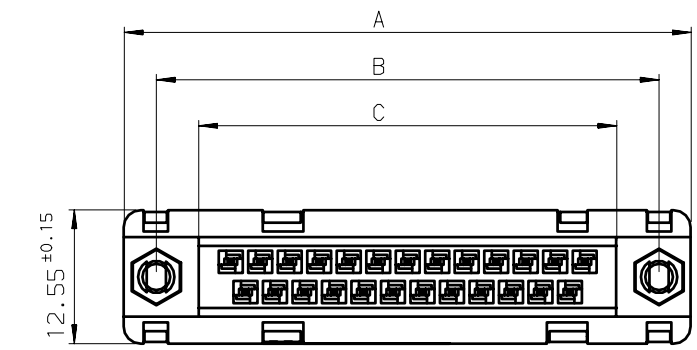


Tous droits strictement réservés. Reproduction ou communication a des tiers interdite sous quelque forme que ce soit sans autorisation écrite du propriétaire. Propriété de c FCI. Droits de reproduction FCI.



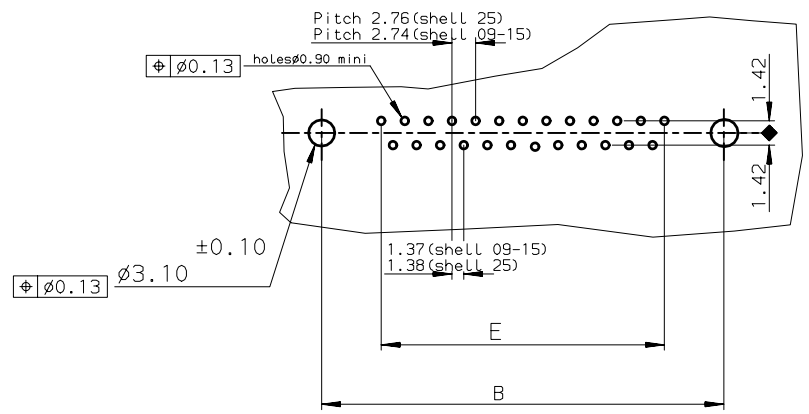
ALL rights strictly reserved. Reproduction or issue to third parties in any form whatever is not permitted without written authority from the proprietor. Property of FCI. Copyright FCI.



SHELL	A±0.38	B±0.12	C±0.10	D±0.25	E±0.07	G±0.25
09	30.81	24.99	16.96	16.79	10.96	5.90
15	39.14	33.32	25.18	25.12	19.18	5.90
25	53.03	47.04	39.12	38.84	33.12	5.70

Core range			
SHELL	TIN LEAD P/N	LEAD FREE P/N	DESIGNATIONS
09	D09P24A4GV00	D09P24A4GV00LF	HEADER 9 CTS STRAIGHT -SOLDER TO BOARD-PCB HARPOON-SCREWLOCK UNC 4.40-ELEC.CONTIN.-PERFORM. LEVEL PL3
15	D15P24A4GV00	D15P24A4GV00LF	HEADER 15 CTS STRAIGHT-SOLDER TO BOARD-PCB HARPOON-SCREWLOCK UNC 4.40-ELEC.CONTIN.-PERFORM. LEVEL PL3
25	D25P24A4GV00	D25P24A4GV00LF	HEADER 25 CTS STRAIGHT-SOLDER TO BOARD-PCB HARPOON-SCREWLOCK UNC 4.40-ELEC.CONTIN.-PERFORM. LEVEL PL3

PC card drilling dimensions(after plating)
(thickness 1.60±0.20mm)



**GENERAL CHARACTERISTICS AND ROHS INFORMATIONS:
SEE DRAWING C01-8646-0000**

European view

www.fciconnect.com ISO 1302	tolerance ISO 406 ISO 1101	projection 	mm
	Dr JARRY 11/08/95 Product family D-SUB size A3 Scale 2 Eng PESSON 11/08/95 Spec ref - Chr LEGARE 11/08/95 Material SEE NOTES ECN LS05-00056 Appr LEGARE 11/08/95	title HDR DELTA D STD EUROPE straight, solder type for PCB 1.6mm	
catalog no - CUSTOMER COPY		sheet 1 of 1	

ltr	ecn no	dr	date
D	-	SBA	16/04/03
E	LS05-0056	L60	07/07/05
-	-	-	-
-	-	-	-
-	-	-	-
-	-	-	-