

# Networking Components

■ SPLITTER MODULES FOR ISDN / POTS / SMART-PHONE

■ APPLICATION :

1. 120K ISDN SPLITTER
2. G.993.1 ISDN SPLITTER
3. SMART PHONE SPLITTER
4. POTS SPLITTER
5. VIOS800G-C IS A SMALL SIZE FILTER COMBINED COMMON MODE CHOKE FOR BETTER EMI
6. VIES2842A IS SMALL SIZE TWO SOLUTIONS FOR POTS SPLITTER
7. VIES4822/VIES4832B ARE SMALL SIZE QUAD SOLUTION FOR DIGITAL-PHONE/120K-ISDN SPLITTER



## SPLITTER SOLUTIONS

Part NO.	Description	PASS BAND	STOP BAND	Impedance	Form
		Freq(KHz)	Freq(KHz)	(OHM)	TYPE
VIOS800G	ISDN SPLITTER	DC~120	600~12,000	150	O
VIOS800G-C	ISDN SPLITTER WITH C.M.C.	DC~120	600~12,000	150	O
VICS803D	DIGITAL PHONE SPLITTER.	DC~640	950~12,000	150	C
VIES805A	POTS SPLITTER	DC~4.0	400~8,000	600	E
VIET805B	POTS SPLITTER	DC~4.0	138~12,000	600	E
VIOS816B	JAPAN_ISDN SPLITTER	DC~320	640~12,000	110/600	O
VIKS816B	JAPAN_ISDN SPLITTER	DC~320	640~12,000	110/600	K
VIET819A	ISDN SPLITTER	4.0~80	150~12,000	135/150	F
VIES620A	ISDN SPLITTER	DC~120	200~12,000	150	E
VIWT820B	POTS SPLITTER	DC~4.0	25~12,000	600	W
VIES2842A	TWO POTS SPLITTER	DC~4.0	138~12,000	600	E
VIES4822A	QUAD DIGITAL_PHONE SPLITTER	DC~630	950~12,000	150	E
VIES4832B	QUAD ISDN SPLITTER	DC~120	600~12,000	150	E
VIZT823A	ISDN SPLITTER (FOR ETSI TS 101 952-1-3)	DC~80	150~1,104	135/150	Z
VIET824A	POTS SPLITTER (FOR ETSI TS 101 728 V1.2.1)	DC~4.0	32~1,100	600/270 120/82	Z
VIWT826A	ISDN SPLITTER	DC~80	138~12,000	220/150	W1
VIET829A	ETSI British Telecom BT-SIN-346	DC~4.0	32~12,000	20	Z
VIET832A	POTS SPLITTER (FOR ETSI TS 101 952-1-1 OPTION B)	DC~4.0	32~12,000	70	Z

**DELTA ELECTRONICS, INC.**

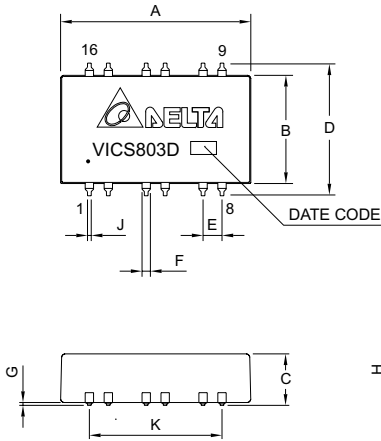
(TAOYUAN PLANT CPBG) 252, SAN YING ROAD, KUEI SAN INDUSTRIAL ZONE, TAOYUAN SHIEN, TAIWAN, R.O.C.

TEL: 886-3-3591968; FAX: 886-3-3591991

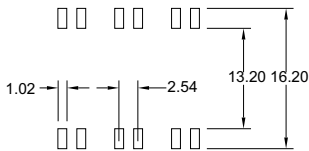
[Http://www.deltaww.com/products/networking](http://www.deltaww.com/products/networking)

## MECHANICAL CONSTRUCTION

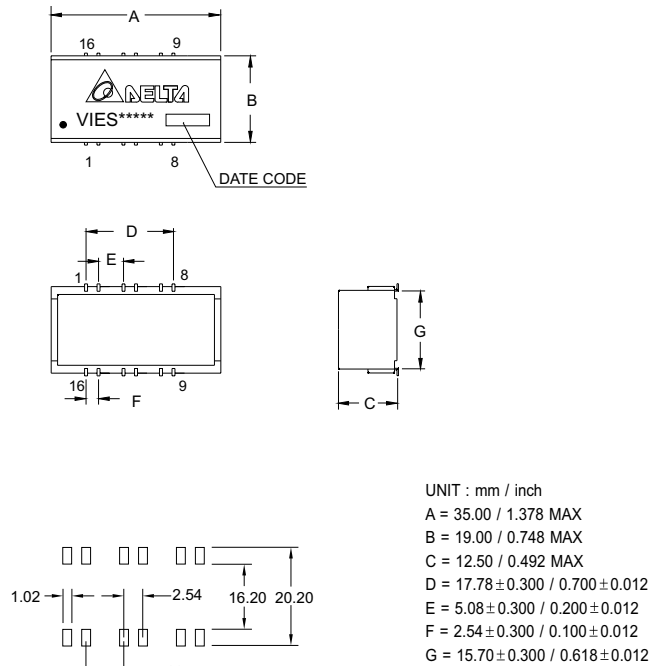
### C TYPE



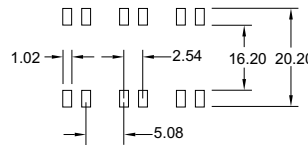
UNIT : mm / inch  
 A =  $23.80 \pm 0.254 / 0.937 \pm 0.010$   
 B =  $14.50 \pm 0.254 / 0.571 \pm 0.010$   
 C =  $7.15 \pm 0.254 / 0.281 \pm 0.010$   
 D =  $18.30 \pm 0.254 / 0.720 \pm 0.010$   
 E =  $2.54 / 0.100$  (TYP)  
 F =  $1.12 \pm 0.127 / 0.044 \pm 0.005$   
 G =  $0.254 \pm 0.127 / 0.010 \pm 0.005$   
 H =  $0.254 / 0.010$  (TYP)  
 I =  $1.00 \pm 0.254 / 0.039 \pm 0.010$   
 J =  $0.50 \pm 0.127 / 0.020 \pm 0.005$   
 K =  $17.78 / 0.700$  (TYP)



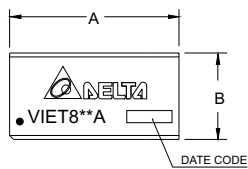
### E TYPE



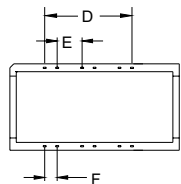
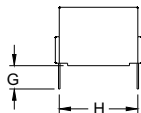
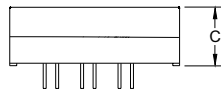
UNIT : mm / inch  
 A =  $35.00 / 1.378$  MAX  
 B =  $19.00 / 0.748$  MAX  
 C =  $12.50 / 0.492$  MAX  
 D =  $17.78 \pm 0.300 / 0.700 \pm 0.012$   
 E =  $5.08 \pm 0.300 / 0.200 \pm 0.012$   
 F =  $2.54 \pm 0.300 / 0.100 \pm 0.012$   
 G =  $15.70 \pm 0.300 / 0.618 \pm 0.012$



### F TYPE

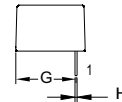
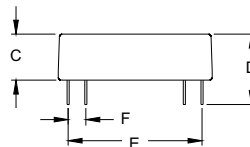
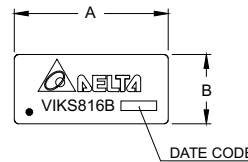


PIN	ALLOCATION
1	LINE+
2	LINE-
9	POTS+
10	POTS-
4,5,7,8	NC
12,13,15,16	NC



UNIT : mm / inch  
 A =  $35.00 / 1.378$  MAX  
 B =  $19.00 / 0.748$  MAX  
 C =  $12.50 / 0.492$  MAX  
 D =  $17.78 \pm 0.300 / 0.700 \pm 0.012$   
 E =  $5.08 \pm 0.300 / 0.200 \pm 0.012$   
 F =  $2.54 \pm 0.300 / 0.100 \pm 0.012$   
 G =  $3.40 \pm 0.300 / 0.134 \pm 0.012$   
 H =  $15.70 \pm 0.300 / 0.618 \pm 0.012$

### K TYPE



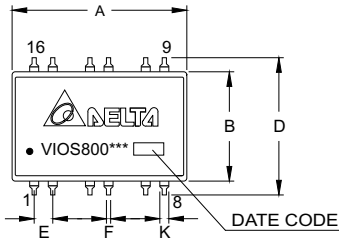
UNIT : mm / inch  
 A =  $22.76 \pm 0.254 / 0.896 \pm 0.010$   
 B =  $10.17 \pm 0.254 / 0.400 \pm 0.010$   
 C =  $8.53 \pm 0.254 / 0.336 \pm 0.010$   
 D =  $11.53 \pm 0.254 / 0.454 \pm 0.010$   
 E =  $19.60 \pm 0.254 / 0.772 \pm 0.010$   
 F =  $2.54 / 0.100$  (TYP)  
 G =  $8.64 / 0.340$  (REF)  
 H =  $0.50 / 0.197$  (REF)

## DELTA ELECTRONICS, INC.

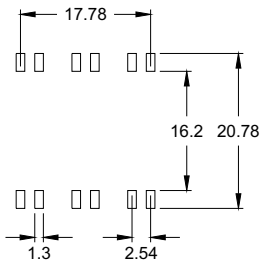
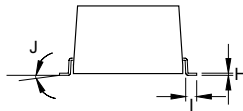
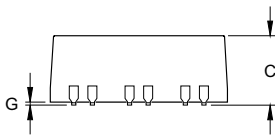
(TAOYUAN PLANT CPBG) 252, SAN YING ROAD, KUEI SAN INDUSTRIAL ZONE, TAOYUAN SHIEN, TAIWAN, R.O.C.  
 TEL: 886-3-3591968; FAX: 886-3-3591991  
[Http://www.deltaww.com/products/networking](http://www.deltaww.com/products/networking)

## MECHANICAL CONSTRUCTION

### O TYPE

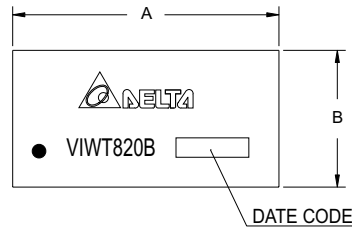


PIN	ALLOCATION
1	LINE+
2	LINE-
7	POTS+
8	POTS-
3-6	NC
9-12	NC

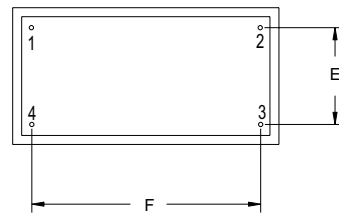
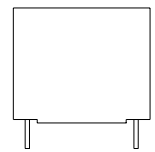
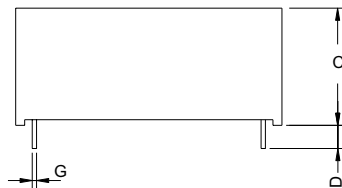


UNIT : mm/inch  
 A = 24.00 ± 0.300 / 0.945 ± 0.012  
 B = 14.60 ± 0.300 / 0.575 ± 0.012  
 C = 10.00 ± 0.300 / 0.394 ± 0.012  
 D = 18.15 ± 0.300 / 0.715 ± 0.012  
 E = 2.54 / 0.100 (TYP)  
 F = 0.76 ± 0.127 / 0.030 ± 0.005  
 G = 0.30 ± 0.127 / 0.010 ± 0.005  
 H = 0.254 ± 0.127 / 0.010 ± 0.005  
 I = 1.00 ± 0.254 / 0.039 ± 0.010  
 J = 0° ~ 8°  
 K = 1.32 ± 0.127 / 0.052 ± 0.005

### W TYPE

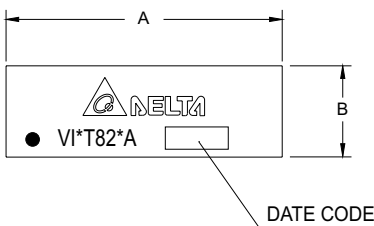


PIN	ALLOCATION
1	LINE+
2	POTS+
3	POTS-
4	LINE-

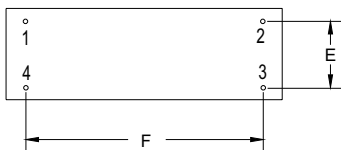
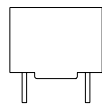
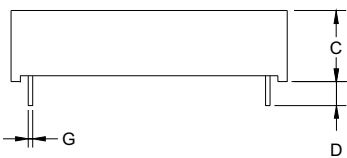


UNIT : mm / inch  
 A = 37.00 / 1.457 (TYP)  
 B = 20.00 / 0.787 (TYP)  
 C = 18.00 / 0.708 (TYP)  
 D = 4.00 / 0.157 (TYP)  
 E = 10.16 ± 0.300 / 0.400 ± 0.012  
 F = 31.8 ± 0.3 / 0.400 ± 0.012  
 G = 0.60 / 0.023 (REF)

### Z TYPE

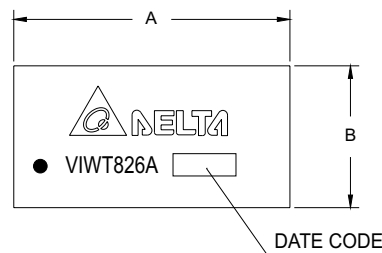


PIN	ALLOCATION
1	LINE+
2	ISDN+
3	ISDN-
4	LINE-

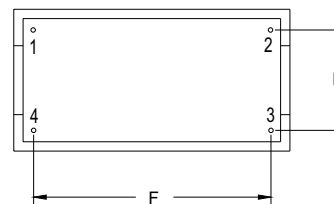
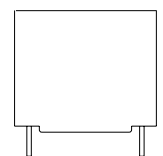
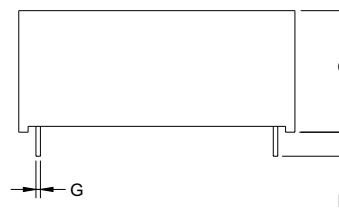


UNIT : mm / inch  
 A = 49.00 / 1.93 MAX  
 B = 13.00 / 0.511 MAX  
 C = 12.00 / 0.472 MAX  
 D = 3.50 ± 0.500 / 0.137 ± 0.019  
 E = 10.00 ± 0.254 / 0.394 ± 0.010  
 F = 44.70 ± 0.254 / 1.760 ± 0.010  
 G = 0.65 / 0.026 (REF)

### W1 TYPE



PIN	ALLOCATION
1	LINE+
2	ISDN+
3	ISDN-
4	LINE-



UNIT : mm / inch  
 A = 37.00 / 1.457 (TYP)  
 B = 20.00 / 0.787 (TYP)  
 C = 16.00 / 0.630 MAX  
 D = 4.00 / 0.157 (TYP)  
 E = 15.00 ± 0.300 / 0.590 ± 0.012  
 F = 32.9 ± 0.300 / 0.129 ± 0.012  
 G = 0.52 / 0.020 (REF)

### DELTA ELECTRONICS, INC.

(TAOYUAN PLANT CPBG) 252, SAN YING ROAD, KUEI SAN INDUSTRIAL ZONE, TAOYUAN SHIEN, TAIWAN, R.O.C.

TEL: 886-3-3591968; FAX: 886-3-3591991  
[Http://www.deltaww.com/products/networking](http://www.deltaww.com/products/networking)