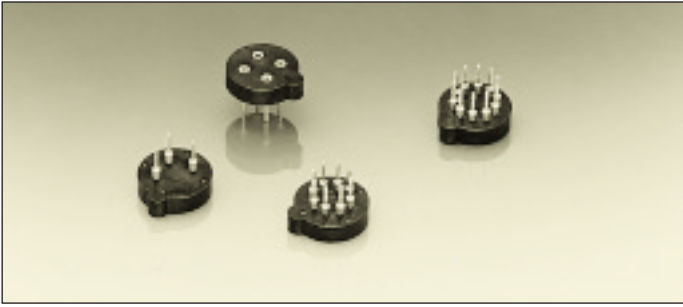




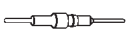
Series 917

TO sockets
Solder tail



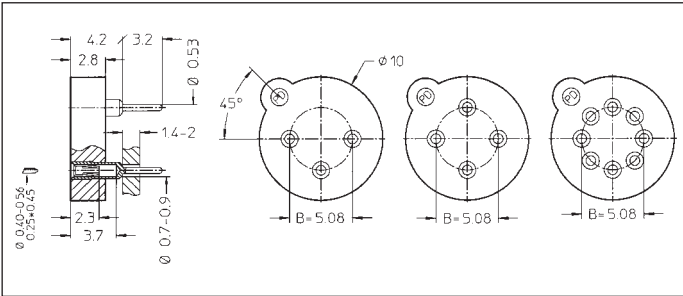
Series 917 TO package sockets exist with 3, 4, 8 and 10 contacts. Two 8 pin versions feature pin centers either on a 5.08 mm or a 5.84 mm circle

Insertion characteristics:
4-finger standard

Platings	Sleeve 	Clip 	Pin 
91 B	5 µm Sn Pb	0.25 µm Au	
93	5 µm Sn Pb	0.75 µm Au	
97 B	5 µm Sn Pb	Goldflash	
99 B	5 µm Sn Pb	5 µm Sn Pb	

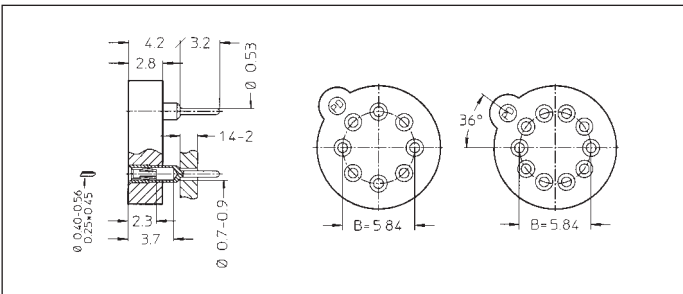
Ordering information

Replace **xx** with code of required plating, e.g.
917-xx-103-41-005 becomes: 917-**99**-103-41-005 with 5 µm tin on sleeve and clip



- 917-xx-103-41-005
- 917-xx-104-41-005
- 917-xx-108-41-005

Series 917 sockets for TO 5 package
Contacts arranged on 5.08 mm circle diameter



- 917-xx-208-41-005
- 917-xx-210-41-005

Series 917 sockets for TO 100 package
Contacts arranged on 5.84 mm circle diameter

This datasheet has been download from:

www.datasheetcatalog.com

Datasheets for electronics components.