

C&K PM Series 5 Tumbler Miniature Snap-in Switchlocks

Features/Benefits

- International agency listings
- Snap-in mounting
- Wire lead terminations available
- 5 Tumbler lock with positive detent

Typical Applications

- Computers
- Point-of-sale terminals
- Marine equipment



Specifications

CONTACT RATING: Q contact material: 4 AMPS @ 125 V AC or 28 V DC; 2 AMPS @ 250 V AC (UL/CSA); 4 AMPS @ 125 V AC, 2 AMPS @ 250 V AC, T65 (VDE). See page M-33 for additional ratings.

ELECTRICAL LIFE: 10,000 make-and-break cycles at full load.

CONTACT RESISTANCE: Below 10 m Ω typ. initial @ 2-4 V DC, 100 mA, for both silver and gold plated contacts.

INSULATION RESISTANCE: 10⁹ Ω min.

DIELECTRIC STRENGTH: 1,000 Vrms min. @ sea level.

INDEXING: 90°:2 positions.

Materials

LOCK: 6/6 nylon with matte finish (UL 94V-2), color black, 5 tumbler, single bitted lock with integral detent mechanism.

KEYS: Two nickel plated brass keys with black plastic head, other colors available.

SWITCH HOUSING: 6/6 nylon (UL 94V-2).

CONTACTS & TERMINALS: Q contact material: Copper, silver plated. See page M-33 for additional contact materials.

NOTE: Any models supplied with Q or B contact material are RoHS compliant. For the latest information regarding RoHS compliance, please go to: www.itcannon.com/rohs.

NOTE: Specifications and materials listed above are for switchlocks with standard options. For information on specific and custom switchlocks, consult Customer Service Center.

Build-A-Switch

To order, simply select desired option from each category and place in the appropriate box. Available options are shown and described on pages M-32 and M-33. For additional options not shown in catalog, consult Customer Service Center.

| | | | | | | | | |
|---|---|--|--|--|---|--|--|---|
| <p>Switch and lock Function</p> <p>PM0613 SP, 90°, Index, keypull pos. 1</p> <p>PM061U SP, 90° Index, keypull pos. 1 & 3</p> | <p>Keying</p> <p>E Two nickel plated brass keys with insert molded plastic head</p> | <p>Lock Type</p> <p>B 5 Tumbler lock with detent</p> | <p>Lock Finish</p> <p>M Plastic lock with matte finish</p> | <p>Terminations</p> <p>05 Quick connect</p> <p>WC Wire lead</p> | <p>Lock Style</p> <p>K Cone shaped facing</p> | <p>Contact Material</p> <p>Q Silver</p> <p>B Gold</p> | <p>Lock Color</p> <p>2 Black</p> | <p>Key Color</p> <p>2 Black</p> |
|---|---|--|--|--|---|--|--|---|



Switchlock



Dimensions are shown: Inch (mm)
Specifications and dimensions subject to change

C&K PM Series 5 Tumbler Miniature Snap-in Switchlocks

SWITCH AND LOCK FUNCTION



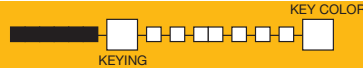
| NO. POLES | MODEL NO. | SWITCH FUNCTION | | KEY PULL POSITIONS | LOCK CONFIGURATION | INDEXING |
|--|---------------|-----------------|--------|--------------------|--------------------|----------|
| | | POS. 1 | POS. 2 | | | |
| SP | PM0613 | OFF | ON | Positions 1, 2 & 3 | | 90° |
| | PM061U | | | Positions 1 & 2 | | |
| SP <p>Part number shown: PM0613EBM05KQ22</p> | | | | | | |

All models with all options when ordered with 'Q' contact material.

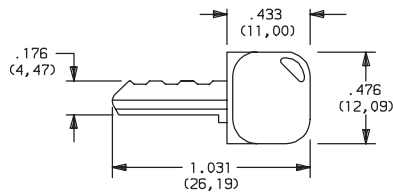
LEGEND

- = Detent Position (90°)
- ⊙ = Key pull possible in these positions.
- ⊙ = Stop Positions

KEYING



E TWO NICKEL PLATED BRASS KEYS WITH INSERT MOLDED PLASTIC HEAD

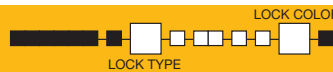


Key part number: 334C1004102

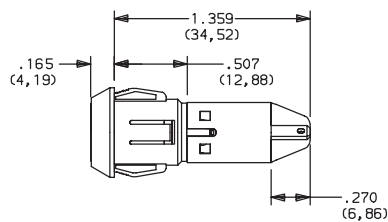
| OPTION CODE | KEY COLOR |
|-------------|-----------|
| 2 | BLACK |

NOTE: Molded plastic head color is black, standard. For more than one key code, replacement keys, or other special features, consult Customer Service Center.

LOCK TYPE



B 5 TUMBLER LOCK WITH DETENT



| OPTION CODE | LOCK COLOR |
|-------------|------------|
| 2 | BLACK |



Third Angle Projection
Dimensions are shown: Inch (mm)
Specifications and dimensions subject to change



C&K PM Series 5 Tumbler Miniature Snap-in Switchlocks

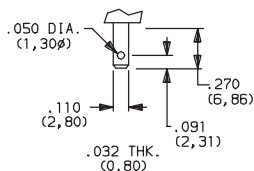
LOCK FINISH

M PLASTIC LOCK WITH MATTE FINISH

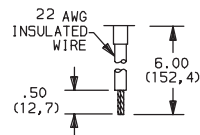


TERMINATIONS

05 QUICK CONNECT



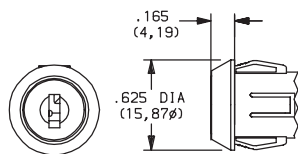
WC WIRE LEAD



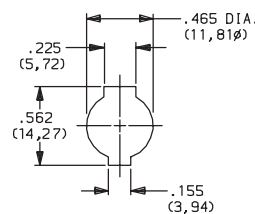
UL style 1015.
Black wire standard, other colors and lengths available,
consult Customer Service Center.

LOCK STYLE

K CONE SHAPED FACING



PANEL MOUNTING



Panel thickness:
.050-.080 (1,27-2,03)

CONTACT MATERIAL

| OPTION CODE | RoHS COMPLIANT* | RoHS COMPATIBLE* | CONTACT AND TERMINAL MATERIAL | RATING | |
|-------------|-----------------|------------------|-------------------------------|-----------------------|--|
| | | | | | |
| Q | YES | YES | SILVER ² | POWER | 4 AMPS @ 125 V AC or 28 V DC; 2 AMPS @ 250 V AC (UL/CSA), 4 AMPS @ 125 V AC; or 2 AMPS @ 250 V AC; T65 (VDE). |
| B | YES | YES | GOLD ¹ | LOW LEVEL/DRY CIRCUIT | 0.4 VA MAX. @ 20 V AC or DC MAX. |

* Note: See Technical Data section of this catalog for RoHS compliant and compatible definitions and specifications.

¹ CONTACTS & TERMINALS: Copper, with gold plate over nickel plate.

² CONTACTS & TERMINALS: Copper, silver plated (standard with all termination options).

All models with all options when ordered with 'Q' contact material.

AVAILABLE HARDWARE

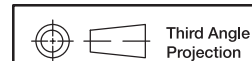


Key Code: 041

PART NO. (ONE KEY)

334C1004102 BLACK

Material: Brass
Finish: Nickel plate
6/6 Nylon insert molded head



Dimensions are shown: Inch (mm)
Specifications and dimensions subject to change



M

Switchlock