

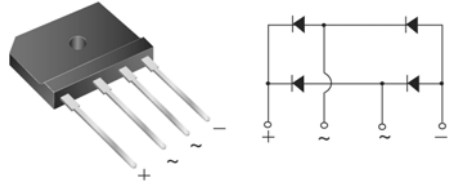


GBJ15A thru GBJ15M

Glass Passivated Single-Phase Bridge Rectifiers
Reverse Voltage 50 to 1000 Volts Forward Current 15.0 Amperes

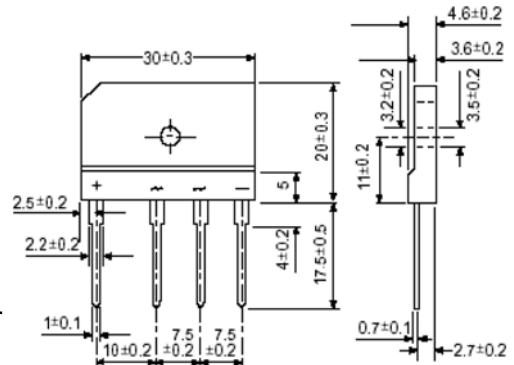
Features

- ◆ Thin Single In-Line package
- ◆ Ideal for printed circuit boards
- ◆ Glass passivated chip junction
- ◆ High surge current capability
- ◆ High case dielectric strength of 2500 V_{RMS}
- ◆ Plastic package has Underwriters Laboratory Flammability Classification 94V-0



Mechanical Data

- ◆ Case: GBJ(5S)
Epoxy meets UL-94V-0 Flammability rating
- ◆ Terminals: Plated leads solderable per MIL-STD-750, Method 2026
- ◆ High temperature soldering guaranteed:
260°C/10 seconds, 0.375 (9.5mm) lead length,
5lbs.(2.3kg) tension
- ◆ Polarity: As marked on body
- ◆ Mounting Torque: 10 cm-kg (8.8 inches-lbs) max.
- ◆ Recommended Torque: 5.7cm-kg (5 inches-lbs)



Package outline dimensions in millimeters

Typical Applications

General purpose use in ac-to-dc bridge full wave rectification for Switching Power Supply, Home Appliances, Office Equipment, Industrial Automation applications

Maximum Ratings and Electrical Characteristics

Rating at 25°C ambient temperature unless otherwise specified.

Parameter	Symbols	GBJ15A	GBJ15B	GBJ15D	GBJ15G	GBJ15J	GBJ15K	GBJ15M	Units
Maximum repetitive peak reverse voltage	V_{RRM}	50	100	200	400	600	800	1000	Volts
Maximum RMS voltage	V_{RMS}	35	70	140	280	420	560	700	Volts
Maximum DC blocking voltage	V_{DC}	50	100	200	400	600	800	1000	Volts
Maximum average forward rectified output current at $T_C=107^\circ\text{C}$ $T_A=25^\circ\text{C}$	$I_{F(AV)}$				15 ⁽¹⁾ 3.5 ⁽²⁾				Amps
Peak forward surge current, 8.3ms single half sine-wave superimposed on rated load (JEDEC Method)	I_{FSM}				200				Amps
Rating for fusing (t<8.3ms)	I^2t				166				A ² sec
Maximum instantaneous forward voltage drop per leg at 7.5A	V_F				1.0				Volt
Maximum DC reverse current at rated DC blocking voltage per leg $T_A=25^\circ\text{C}$ $T_A=125^\circ\text{C}$	I_R				5 250				uA
Typical thermal resistance per leg	$R_{\theta JA}$ $R_{\theta JC}$				22 ⁽²⁾ 1.5 ⁽¹⁾				°C/W
Dielectric strength (Terminals to case, AC 1 minute)	V_{ISO}				2500				Volts
Operating junction and storage temperature range	T_J, T_{STG}				-55 to +150				°C

- Notes:**
1. Unit case mounted on 18.5x18.5x0.15cm thick Al plate heatsink
 2. Units mounted on P.C.B. without heatsink
 3. Recommended mounting position is to bolt down on heatsink with silicone thermal compound for maximum heat transfer with #6 screw

RATINGS AND CHARACTERISTIC CURVES

($T_A = 25^\circ\text{C}$ unless otherwise noted)

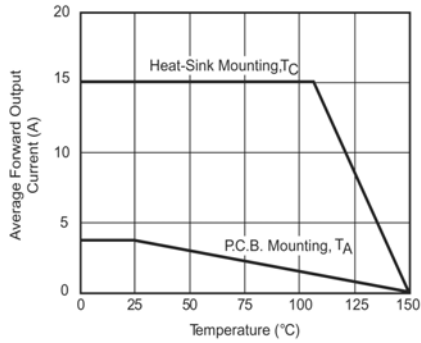


Figure 1. Derating Curve Output Rectified Current

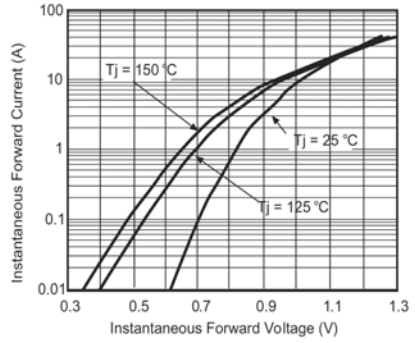


Figure 3. Typical Forward Characteristics Per Leg

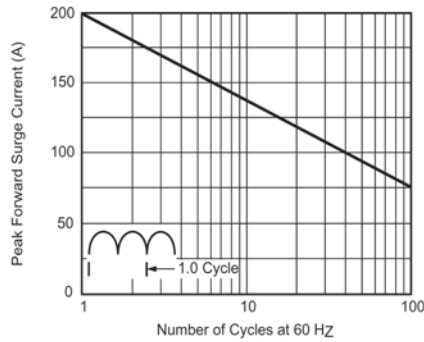


Figure 2. Maximum Non-Repetitive Peak Forward Surge Current Per Leg

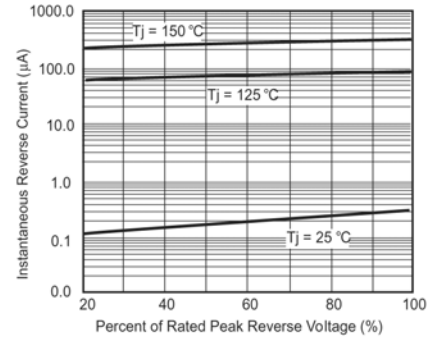


Figure 4. Typical Reverse Characteristics Per Leg

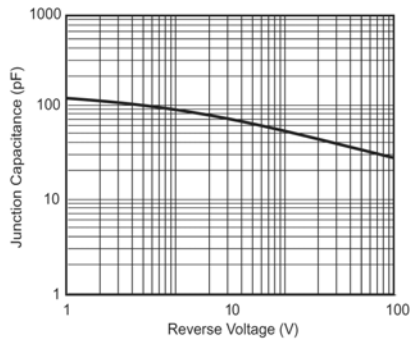


Figure 5. Typical Junction Capacitance Per Leg

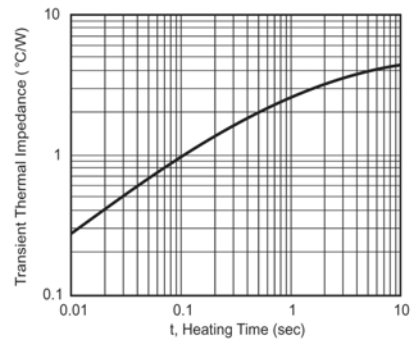


Figure 6. Typical Transient Thermal Impedance