

B31

FEMALE HEADER PROFILE : 6.4mm STRAIGHT

PITCH: 2.0mm

SPECIFICATIONS

Material

Insulator : Nylon 6T, glass reinforced, rated UL 94V-0

Contact : Phosphor Bronze

Electrical

Current Rating : 1 Amp DC

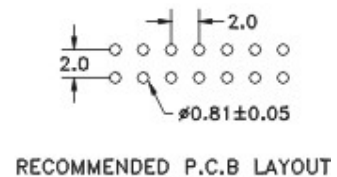
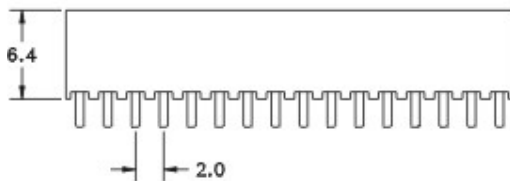
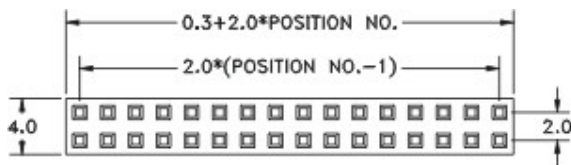
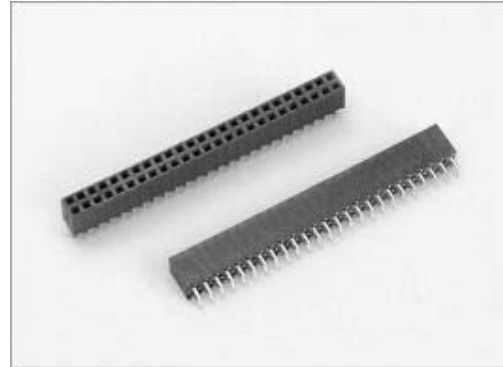
Contact Resistance : 30 mΩ max.

Insulation Resistance : 3000 MΩ min.

Dielectric Withstanding Voltage : 500V AC for 1minute

Operating Temperature : -40°C to +105°C

• Mating Suggestion : C29, C30 series.



HOW TO ORDER:

B31 - 1 - 2 - 3 - 4

| 1.NO. OF CONTACT | 2.CONTACT MATERIAL | 3.CONTACT PLATING | 4.INSULATOR COLOR |
|------------------------|--------------------|---|-------------------|
| DUAL ROW 2*2 - 2*40 | B: PHOSPHOR BRONZE | T: TIN PLATED S: SELECTIVE G: GOLD FLASH A: 5μ" INCH GOLD B: 10μ" INCH GOLD C: 15μ" INCH GOLD D: 30μ" INCH GOLD | 1. BLACK |