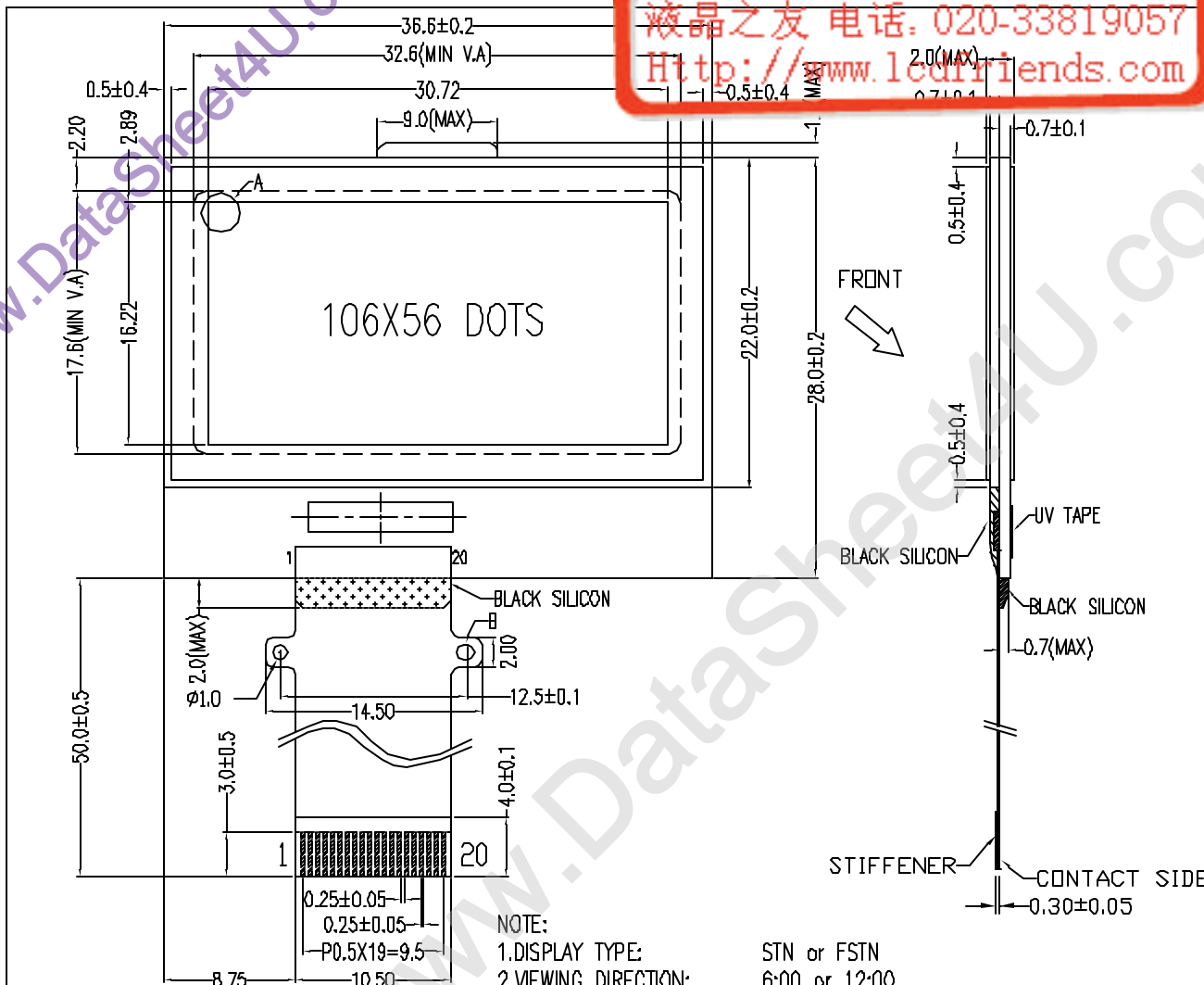
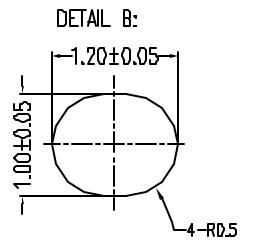
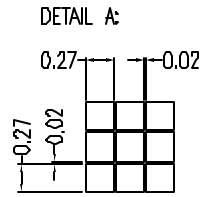



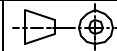
液晶之友 电话: 020-33819057  
 Http://www.lcdfriends.com



NO.	SYMBOL
1	N/C
2	V0
3	V4
4	V3
5	V2
6	V1
7	C2-
8	C2+
9	C1+
10	C1-
11	C3+
12	V <sub>OUT</sub>
13	V <sub>SS</sub>
14	V <sub>DD</sub>
15	SID
16	SCLK
17	RS
18	/RESET
19	/CS1
20	N/C



- NOTE:
- DISPLAY TYPE: STN or FSTN
  - VIEWING DIRECTION: 6:00 or 12:00
  - POLARIZER MODE: REFLECTIVE or TRANSFLECTIVE/POSITIVE
  - LCD OPERATING VOLTAGE: 9.5V
  - V<sub>DD</sub>=3.0V
  - DRIVE METHOD: 1/65 DUTY 1/9 BIAS
  - OPERATING TEMP.: NORMAL or WIDE
  - STORAGE TEMP.: NORMAL or WIDE
  - CONTROLLER: S6B0724A01-B0CY (available optionally)
  - WITHOUT BACKLIGHT
  - UNMARKED TOLERANCE: ±0.3mm

 <b>TIAN-MA MICROELECTRONICS CO.</b> 6/F., CASTIC Building, Shennan Road, Central, Shenzhen, China			
			TITLE: TM10656A series
DRAWN BY:	CHECKED BY:	DWG NO: G-1	SCALE:
APPROVED BY:	CONFIRMED BY:	DWG NAME: TM10656ACIG1G-1	SHEET NO: 01