

## Features

### General

- High-performance, Low-power secureAVR™ RISC Architecture
  - 133 Powerful Instructions (Most Executed in a Single Clock Cycle)
  - Linear Addressing of up to 8M Bytes of Code and up to 16M Bytes of Data
- Low-power Idle and Power-down Modes
- Bond Pad Locations Conforming to ISO 7816-2
- ESD Protection to ± 6000V
- Operating Ranges: from 2.7V to 5.5V
- Compliant with GSM, 3GPP and EMV 2000 Specifications; PC Industry Compatible
- Available in Wafers, Modules and Industry-standard Packages

### Memory

- 192K Bytes of ROM Program Memory
- 72K Bytes of EEPROM, Including 128-byte OTP Area and 384-byte Bit-addressable Area
  - 1 to 128-byte Program/Erase
  - 1 ms Program, 1 ms Erase
  - Typically More than 500,000 Write/Erase Cycles at a Temperature of 25°C
  - 10 Years Data Retention
- 4K Bytes of RAM

### Peripherals

- ISO 7816 Controller
  - Up to 625 kbps at 5 MHz
  - Compliant with T = 0 and T = 1 Protocols
- Programmable Internal Oscillator (Up to 20 MHz on ROM)
- Two 16-bit Timers
- Random Number Generator (RNG)
- 2-level, 8-vector Interrupt Controller
- Hardware DES and Triple DES DPA Resistant
- Checksum Accelerator
- CRC 16 Engine (Compliant with ISO/IEC 3309)
- 8-bit GF(2<sup>n</sup>) Multiplier
- Crypto-coprocessor (Pre-programmed Functions for Cryptography and Authentication Including RSA, DSA, Key Generation, ECC)

### Security

- Dedicated Hardware for Protection Against SPA/DPA Attacks
- Advanced Protection Against Physical Attack, Including Active Shield
- Environmental Protection Systems
- Voltage Monitor
- Frequency Monitor
- Temperature Monitor
- Light Protection
- Secure Memory Management/Access Protection (Supervisor Mode)

### Development Tools

- Voyager Emulation Platform (ATV2 Advanced) to Support Software Development
- IAR Systems C-Spy® Debugger or AVR Studio, Version 4.7 or Later
- Software Libraries and Application Notes



## Secure Microcontroller for Smart Cards

AT90SC  
19272RC

## Summary

Rev. 1592AS–SMIC–25Jun03



Note: This is a summary document. A complete document will be available under NDA. For more information, please contact your local Atmel sales office.

## Description

The AT90SC19272RC is a low-power, high-performance, 8-/16-bit microcontroller, based on the secureAVR RISC architecture, with ROM program memory, EEPROM data memory and a crypto-coprocessor. By executing powerful instructions in a single clock cycle, the AT90SC19272RC achieves throughputs close to 1 MIPS per MHz. Its Harvard architecture includes 32 general-purpose working registers directly connected to the ALU, allowing two independent registers to be accessed in one single instruction executed in one clock cycle.

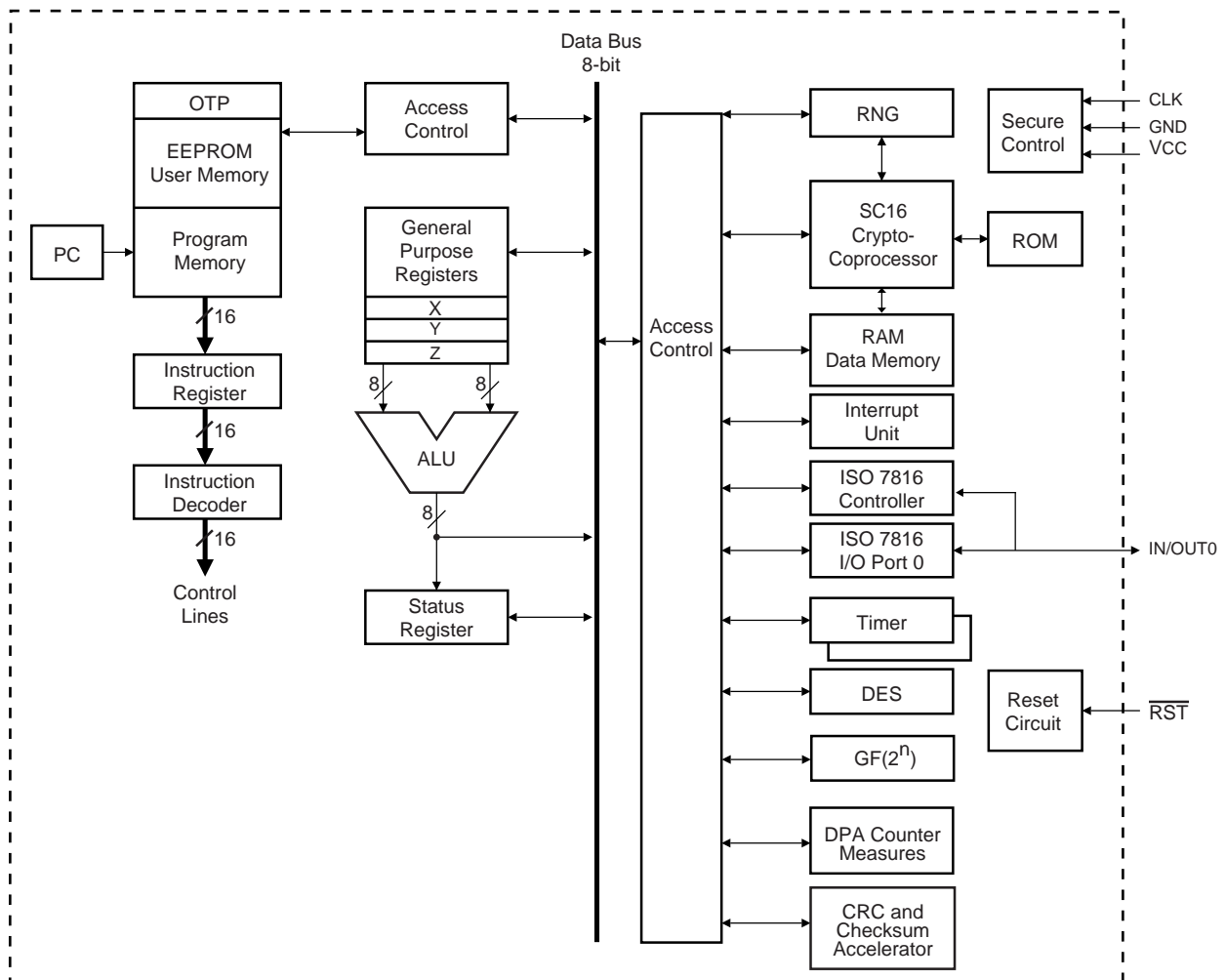
The AT90SC19272RC uses secureAVR architecture that allows the linear addressing of up to 8M bytes of code and up to 16M bytes of data, and also provides a number of new functional and security features.

The crypto engine featured in the AT90SC series is the SC16, a 16-bit processor dedicated to performing fast encryption and authentication functions.

Additional security features include power, frequency and temperature protection logic, logical scrambling on program data and addresses, power analysis countermeasures, and memory accesses controlled by a supervisor mode.

A block diagram of the AT90SC19272RC is shown in Figure 1.

**Figure 1.** AT90SC19272RC secureAVR Enhanced RISC Architecture





## Atmel Headquarters

### **Corporate Headquarters**

2325 Orchard Parkway  
San Jose, CA 95131  
TEL 1(408) 441-0311  
FAX 1(408) 487-2600

### **Europe**

Atmel Sarl  
Route des Arsenaux 41  
Case Postale 80  
CH-1705 Fribourg  
Switzerland  
TEL (41) 26-426-5555  
FAX (41) 26-426-5500

### **Asia**

Room 1219  
Chinachem Golden Plaza  
77 Mody Road Tsimhatsui  
East Kowloon  
Hong Kong  
TEL (852) 2721-9778  
FAX (852) 2722-1369

### **Japan**

9F, Tonetsu Shinkawa Bldg.  
1-24-8 Shinkawa  
Chuo-ku, Tokyo 104-0033  
Japan  
TEL (81) 3-3523-3551  
FAX (81) 3-3523-7581

## Atmel Operations

### **Memory**

2325 Orchard Parkway  
San Jose, CA 95131  
TEL 1(408) 441-0311  
FAX 1(408) 436-4314

### **Microcontrollers**

2325 Orchard Parkway  
San Jose, CA 95131  
TEL 1(408) 441-0311  
FAX 1(408) 436-4314

La Chantrerie  
BP 70602  
44306 Nantes Cedex 3, France  
TEL (33) 2-40-18-18-18  
FAX (33) 2-40-18-19-60

### **ASIC/ASSP/Smart Cards**

Zone Industrielle  
13106 Rousset Cedex, France  
TEL (33) 4-42-53-60-00  
FAX (33) 4-42-53-60-01

1150 East Cheyenne Mtn. Blvd.  
Colorado Springs, CO 80906  
TEL 1(719) 576-3300  
FAX 1(719) 540-1759

Scottish Enterprise Technology Park  
Maxwell Building  
East Kilbride G75 0QR, Scotland  
TEL (44) 1355-803-000  
FAX (44) 1355-242-743

### **RF/Automotive**

Theresienstrasse 2  
Postfach 3535  
74025 Heilbronn, Germany  
TEL (49) 71-31-67-0  
FAX (49) 71-31-67-2340

1150 East Cheyenne Mtn. Blvd.  
Colorado Springs, CO 80906  
TEL 1(719) 576-3300  
FAX 1(719) 540-1759

### **Biometrics/Imaging/Hi-Rel MPU/ High Speed Converters/RF Datacom**

Avenue de Rochepleine  
BP 123  
38521 Saint-Egreve Cedex, France  
TEL (33) 4-76-58-30-00  
FAX (33) 4-76-58-34-80

---

### **e-mail**

[literature@atmel.com](mailto:literature@atmel.com)

### **Web Site**

<http://www.atmel.com>

### **© Atmel Corporation 2003.**

Atmel Corporation makes no warranty for the use of its products, other than those expressly contained in the Company's standard warranty which is detailed in Atmel's Terms and Conditions located on the Company's web site. The Company assumes no responsibility for any errors which may appear in this document, reserves the right to change devices or specifications detailed herein at any time without notice, and does not make any commitment to update the information contained herein. No licenses to patents or other intellectual property of Atmel are granted by the Company in connection with the sale of Atmel products, expressly or by implication. Atmel's products are not authorized for use as critical components in life support devices or systems.

ATMEL® is a registered trademark of Atmel. secureAVR™ is a trademark of Atmel.

C-Spy® is a registered trademark of IAR Systems AB. Other terms and product names may be the trademark of others.



Printed on recycled paper.