

# DATA SHEET

## **CBT6820**

20-bit bus switch with precharged outputs  
and Schottky undershoot protection for  
live insertion

Product specification

1999 Apr 05

# 20-bit bus switch with precharged outputs and Schottky undershoot protection for live insertion

CBT6820

## FEATURES

- TTL compatible inputs and outputs
- $5\Omega$  switch connection between two port A and port B
- Thin shrink small outline (TSSOP)
- Undershoot protection included to prevent shoot through level changes
- Bias voltage pre-charges the outputs to minimize signal distortion during live insertion

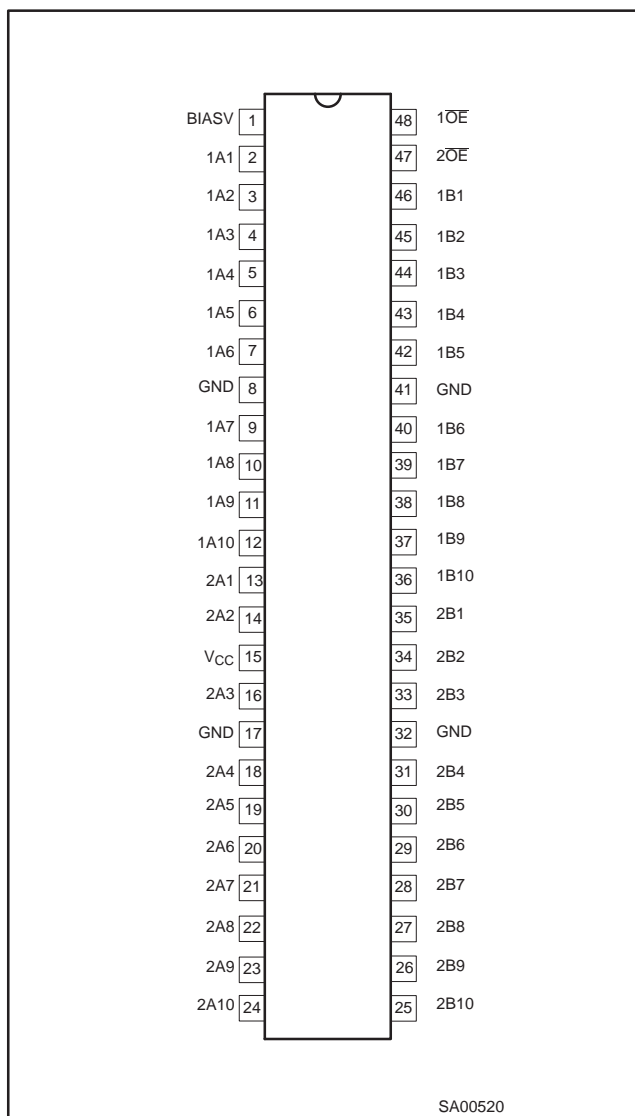
## DESCRIPTION

The CBT6820 provides twenty bits of high-speed TTL-compatible bus switching. The low on-state resistance of the switch allows bi-directional connections to be made while adding near-zero propagation delay. The device also precharges the B port to a user-selectable bias voltage (BIASV) to minimize live-insertion noise.

The device is organized as two 10-bit switch with individual enable (OE) input. When OE is low, the switch is on and port A is connected to port B. When OE is high, the switch between port A and port B is open and the B port is precharged to BIASV through the equivalent of a 10-k $\Omega$  resistor.

Special clamp circuitry and Schottky diode clamps to ground are used to prevent an under voltage on the A side ( $V_{in} < GND$ ) from causing the B side precharge voltage to drop below the "1" state.

## PIN CONFIGURATION



## QUICK REFERENCE DATA

SYMBOL	PARAMETER	CONDITIONS $T_{amb} = 25^{\circ}\text{C}$ ; GND = 0V	TYPICAL	UNIT
$t_{PLH}/t_{PHL}$	Propagation delay An to Bn or Bn to An	$C_L = 50\text{ pF}$ , $V_{CC} = 5\text{ V}$	0.25	ns
$C_{IN}$	Input capacitance		4.5	pF
$C_{I/O}$	Input/output capacitance	Outputs disabled; $V_O = 0\text{ V}$ or $V_{CC}$	9.5	pF

## ORDERING INFORMATION

PACKAGES	TEMPERATURE RANGE	OUTSIDE NORTH AMERICA	NORTH AMERICA	DWG NUMBER
48-Pin Plastic TSSOP Type II	$-40^{\circ}\text{C}$ to $+85^{\circ}\text{C}$	CBT6820 DGG	CBT6820 DGG	SOT362-1

20-bit bus switch with precharged outputs and  
Schottky undershoot protection for live insertion

CBT6820

PIN DESCRIPTION

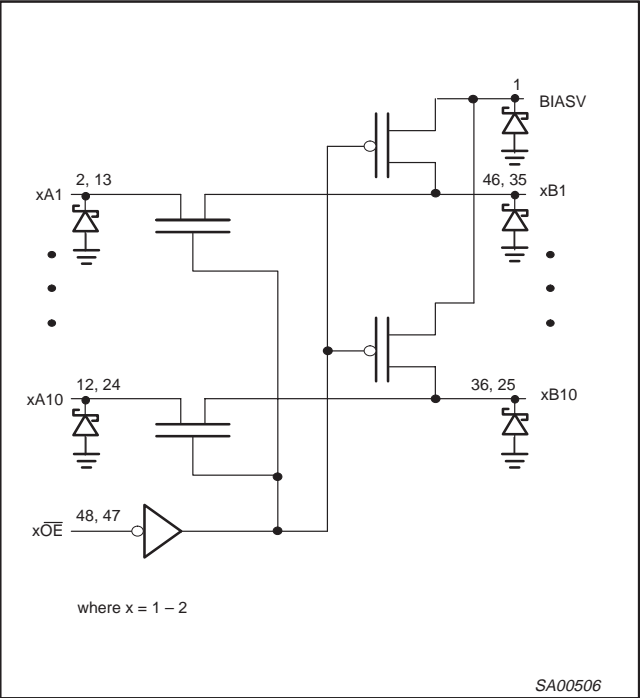
PIN NUMBER	SYMBOL	NAME AND FUNCTION
1	BIASV	Bias voltage
2, 3, 4, 5, 6, 7, 9, 10, 11, 12	1A1–1A10	Port 1A1 to Port 1A10
8, 17, 32, 41	GND	Ground (V)
13, 14, 16, 18, 19, 20, 21, 22, 23, 24	2A1–2A10	Port 2A1 to Port 2A10
15	V <sub>CC</sub>	Positive supply voltage
35, 34, 33, 31, 30, 29, 28, 27, 26, 25	2B1–2B10	Port 2B1 to Port 2B10
46, 45, 44, 43, 42, 40, 39, 38, 37, 36	1B1–1B10	Port 1B1 to Port 1B10
48, 47	1OE, 2OE	Switch enables

FUNCTION TABLE

OE	STATE
L	A Port = B Port
H	A Port = Z
H	B Port = BIASV

H = High voltage level  
L = Low voltage level  
Z = High impedance “off” state

LOGIC SYMBOL



ABSOLUTE MAXIMUM RATINGS

SYMBOL	PARAMETER	CONDITIONS	RATING	UNIT
V <sub>CC</sub>	DC supply voltage		−0.5 to +7.0	V
I <sub>IK</sub>	DC clamp diode current	V <sub>I</sub> < 0	−50	mA
V <sub>I</sub>	DC input voltage <sup>1</sup>		−0.5 to +7.0	V
I <sub>SW</sub>	DC continuous channel current	V <sub>O</sub> = 0 to V <sub>CC</sub>	±128	mA
V <sub>BIASV</sub>	DC bias voltage		−0.5 to +7.0	V
T <sub>stg</sub>	Storage temperature range		−65 to 150	°C
øJA	Plastic thin shrink small outline package (TSSOP)		104	°C/W

**NOTE:**  
1. The input and output voltage ratings may be exceeded if the input and output current ratings are observed.

RECOMMENDED OPERATING CONDITIONS

SYMBOL	PARAMETER	LIMITS		UNIT
		Min	Max	
V <sub>CC</sub>	DC supply voltage	4.0	5.5	V
BIASV	DC supply voltage	1.3	V <sub>CC</sub>	V
V <sub>IH</sub>	High-level input voltage (control pin)	2.0		V
V <sub>IL</sub>	Low-level Input voltage (control pin)		0.8	V
T <sub>amb</sub>	Operating free-air temperature range	−40	+85	°C

# 20-bit bus switch with precharged outputs and Schottky undershoot protection for live insertion

CBT6820

## DC ELECTRICAL CHARACTERISTICS

SYMBOL	PARAMETER	TEST CONDITIONS	LIMITS			UNIT
			T <sub>amb</sub> = −40°C to +85°C			
			Min	Typ <sup>1</sup>	Max	
V <sub>IK</sub>	Input clamp voltage	V <sub>CC</sub> = 4.5V; I <sub>I</sub> = −18mA			−1.2	V
I <sub>I</sub>	Input leakage current (control pin)	V <sub>CC</sub> = 5.5V; V <sub>I</sub> = GND or 5.5V			±5	μA
I <sub>O</sub>	Output bias current (B pins)	V <sub>CC</sub> = 4.5V; BiasV = 2.4V; V <sub>O</sub> = 0, $\overline{\text{OE}}$ = V <sub>CC</sub>			−0.25	mA
I <sub>CC</sub>	Quiescent supply current	V <sub>CC</sub> = 5.5V; I <sub>O</sub> = 0, V <sub>I</sub> = V <sub>CC</sub> or GND			2.5	mA
ΔI <sub>CC</sub>	Control pins <sup>2</sup>	V <sub>CC</sub> = 5.5V, one input at 3.4V, other inputs at V <sub>CC</sub> or GND			2.5	mA
C <sub>I</sub>	Input capacitance per $\overline{\text{OE}}$ pin	V <sub>I</sub> = 3V or 0		4.5		pF
C <sub>O(OFF)</sub>	Capacitance per port (OFF-state)	V <sub>O</sub> = 3V or 0; switch off		9.5		pF
r <sub>on</sub> <sup>3</sup>	On-resistance	V <sub>CC</sub> = 4.5V; V <sub>I</sub> = 0V; I <sub>I</sub> = 64mA		5	7	Ω
		V <sub>CC</sub> = 4.5V; V <sub>I</sub> = 0V; I <sub>I</sub> = 30mA		5	7	
		V <sub>CC</sub> = 4.5V; V <sub>I</sub> = 2.4V; I <sub>I</sub> = −15mA		10	15	
V <sub>P</sub>	Pass voltage	V <sub>IN</sub> = V <sub>CC</sub> = 4.5V; I <sub>out</sub> = −100μA	3.4	3.6	3.9	V
I <sub>USP</sub>	Undershoot static current protection <sup>4</sup>	V <sub>CC</sub> = 5.0V, V <sub>Bias</sub> = V <sub>CC</sub> I <sub>B</sub> = −5μA, V <sub>B</sub> ≥ 3.0V		−10		mA

### NOTES:

1. All typical values are at  $V_{\text{CC}} = 5\text{V}$ ,  $T_{\text{A}} = 25^{\circ}\text{C}$
2. This is the increase in supply current for each input that is at the specified TTL voltage level rather than  $V_{\text{CC}}$  or GND
3. Measured by the voltage drop between the A and the B terminals at the indicated current through the switch. On-state resistance is determined by the lowest voltage of the two (A or B) terminals.
4. Force  $I_{\text{USP}}$ , measure  $V_{\text{B}} \geq 3\text{V}$

20-bit bus switch with precharged outputs and Schottky undershoot protection for live insertion

CBT6820

AC CHARACTERISTICS FOR  $V_{CC} = 5.0V \pm 0.5V$  RANGE

GND = 0V;  $t_r = t_f \leq 2.5ns$ ;  $C_L = 50pF$ .

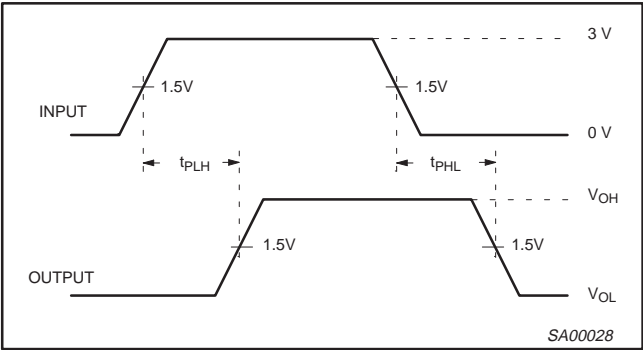
SYMBOL	PARAMETER	WAVEFORM	LIMITS			UNIT
			T <sub>amb</sub> = −40 to +85°C			
			MIN	TYP <sup>1</sup>	MAX	
t <sub>pd</sub>	Propagation delay; An to Bn; Bn to An <sup>2</sup>	1			0.25	ns
t <sub>PZH</sub>	3-State output enable time OE to An; OE to Bn; BIASV = GND	2	1.3	3.1	5.3	ns
t <sub>PZL</sub>	3-State output enable time OE to An; OE to Bn; BIASV = 3.0V	2	1.4	2.9	4.6	ns
t <sub>PHZ</sub>	3-State output enable time OE to An; OE to Bn; BIASV = GND	2	1.7	2.8	4.5	ns
t <sub>PLZ</sub>	3-State output enable time OE to An; OE to Bn; BIASV = 3.0V	2	2.8	4.4	6.6	ns

NOTE:

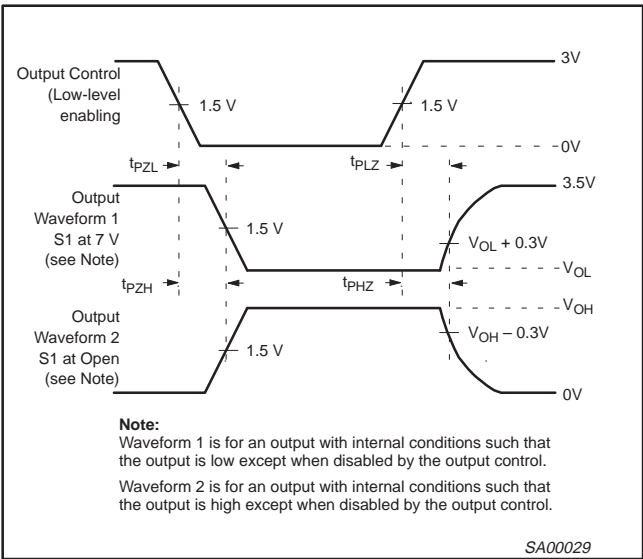
1. All typical values are measured at  $T_{amb} = 25^{\circ}C$  and  $V_{CC} = 5.0V$
2. Warranted but not production tested. The propagation delay is based on the RC time constant of the typical ON-state resistance of the switch and a load capacitance of 50pF, when driven by an ideal voltage source (zero output impedance)

AC WAVEFORMS

$V_M = 1.5V$ ,  $V_{IN} = GND \text{ to } 3.0V$



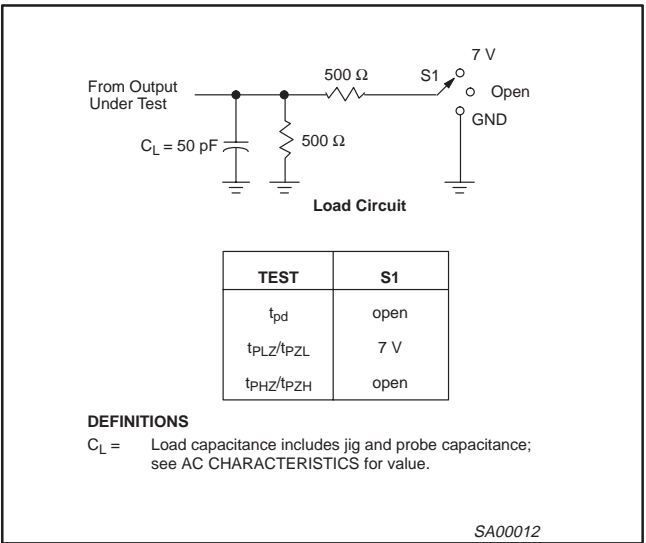
Waveform 1. Waveforms Showing the Input (An) to Output (Bn) Propagation Delays



**Note:**  
Waveform 1 is for an output with internal conditions such that the output is low except when disabled by the output control.  
Waveform 2 is for an output with internal conditions such that the output is high except when disabled by the output control.

Waveform 2. Waveforms Showing the 3-State Output Enable and Disable Times

TEST CIRCUIT AND WAVEFORMS



DEFINITIONS

$C_L$  = Load capacitance includes jig and probe capacitance; see AC CHARACTERISTICS for value.

NOTES:

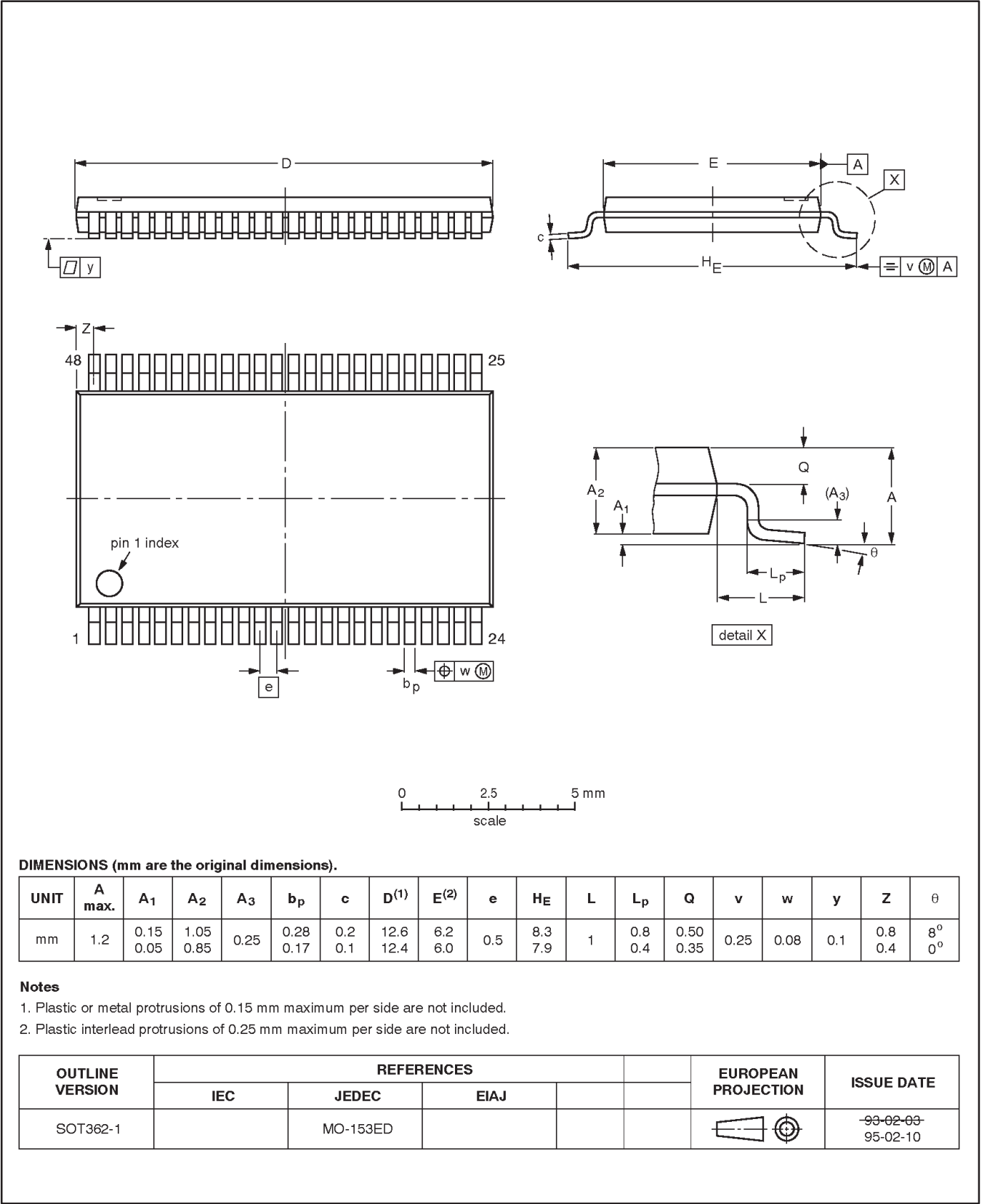
1. All input pulses are supplied by generators having the following characteristics:  $PRR \leq 10MHz$ ,  $Z_O = 50 \Omega$ ,  $t_r \leq 2.5 ns$ ,  $t_f \leq 2.5 ns$ .
2. The outputs are measured one at a time with one transition per measurement.

20-bit bus switch with precharged outputs and  
Schottky undershoot protection for live insertion

CBT6820

TSSOP48: plastic thin shrink small outline package; 48 leads; body width 6.1mm

SOT362-1



---

20-bit bus switch with precharged outputs and  
Schottky undershoot protection for live insertion

---

CBT6820

## NOTES

20-bit bus switch with precharged outputs and  
Schottky undershoot protection for live insertion

CBT6820

DEFINITIONS		
Data Sheet Identification	Product Status	Definition
Objective Specification	Formative or in Design	This data sheet contains the design target or goal specifications for product development. Specifications may change in any manner without notice.
Preliminary Specification	Preproduction Product	This data sheet contains preliminary data, and supplementary data will be published at a later date. Philips Semiconductors reserves the right to make changes at any time without notice in order to improve design and supply the best possible product.
Product Specification	Full Production	This data sheet contains Final Specifications. Philips Semiconductors reserves the right to make changes at any time without notice, in order to improve design and supply the best possible product.

Philips Semiconductors and Philips Electronics North America Corporation reserve the right to make changes, without notice, in the products, including circuits, standard cells, and/or software, described or contained herein in order to improve design and/or performance. Philips Semiconductors assumes no responsibility or liability for the use of any of these products, conveys no license or title under any patent, copyright, or mask work right to these products, and makes no representations or warranties that these products are free from patent, copyright, or mask work right infringement, unless otherwise specified. Applications that are described herein for any of these products are for illustrative purposes only. Philips Semiconductors makes no representation or warranty that such applications will be suitable for the specified use without further testing or modification.

**LIFE SUPPORT APPLICATIONS**  
Philips Semiconductors and Philips Electronics North America Corporation Products are not designed for use in life support appliances, devices, or systems where malfunction of a Philips Semiconductors and Philips Electronics North America Corporation Product can reasonably be expected to result in a personal injury. Philips Semiconductors and Philips Electronics North America Corporation customers using or selling Philips Semiconductors and Philips Electronics North America Corporation Products for use in such applications do so at their own risk and agree to fully indemnify Philips Semiconductors and Philips Electronics North America Corporation for any damages resulting from such improper use or sale.