

●Characteristics

Parameter	Symbol	Typical	Unit
Effective printing width	—	54.2	mm
Dot pitch	—	0.0847	mm
Total dot number	—	640	dots
Average resistance value	Rave	1250	Ω
Applied voltage	V _H	24	V
Applied power	P _O	0.42	W / dot
Print cycle	SLT	1.5	ms
Pulse width	T _{ON}	0.30	ms
Maximum number of dots energized simultaneously	—	640	dots
Maximum clock frequency	—	10	MHz
Maximum roller diameter	—	—	mm
Running life / pulse life	—	50 / 10 ⁸	km / pulses
Operating temperature	—	5~45	°C

●Pin assignments

HIROSE

No.	Circuit	No.	Circuit
1	V _{DD}	2	BEO
3	GND	4	DI
5	N.C.	6	CLK
7	LA	8	GND
9	GND	10	N.C.
11	N.C.	12	GND
13	V _{DD}	14	STB2
15	STB1	16	TM
17	TM	18	SENS1
19	SENS2	20	SENS3

JST

No.	Circuit
1	VH
2	VH
3	VH
4	GND
5	GND
6	GND

● Timing chart

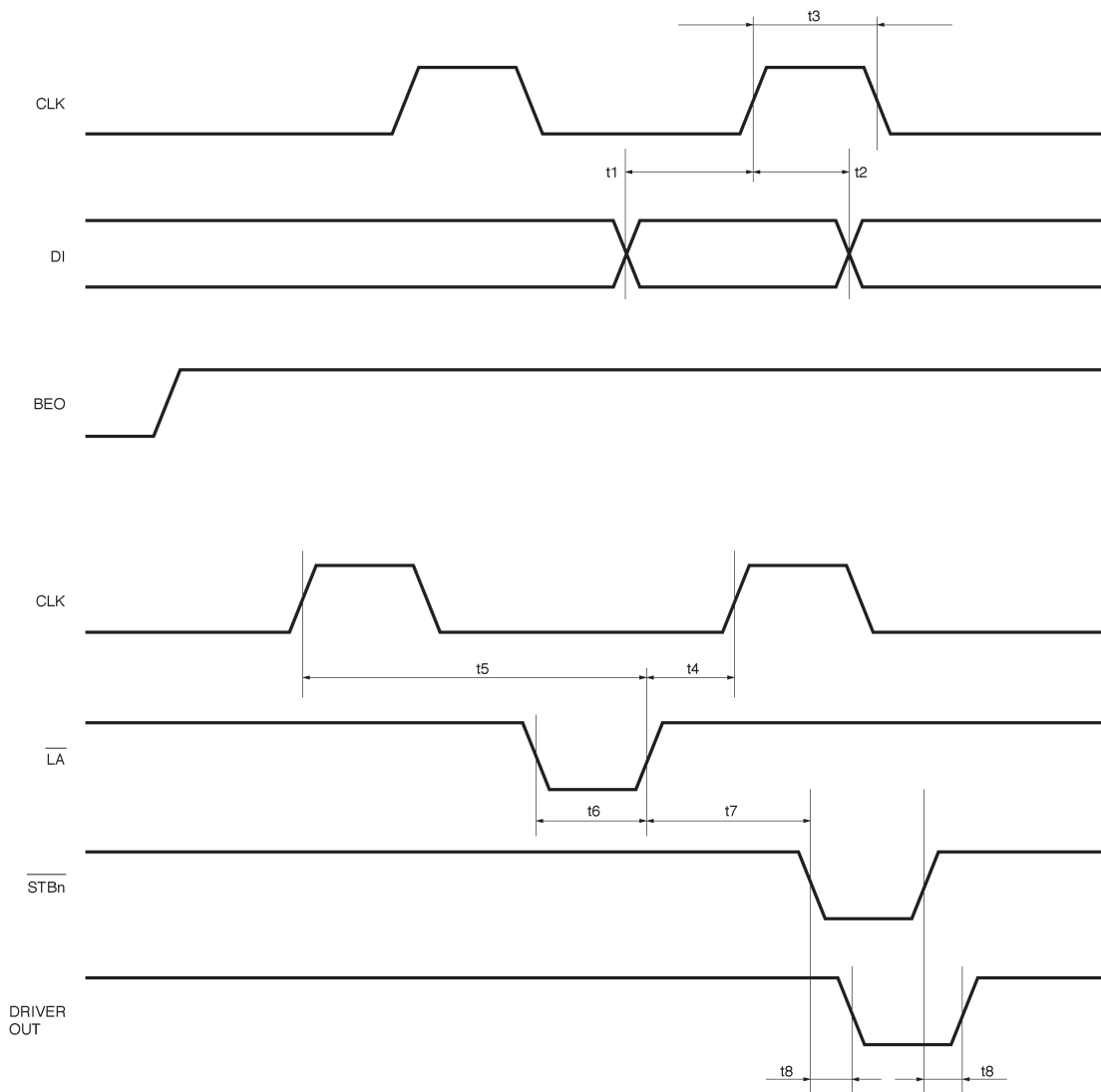
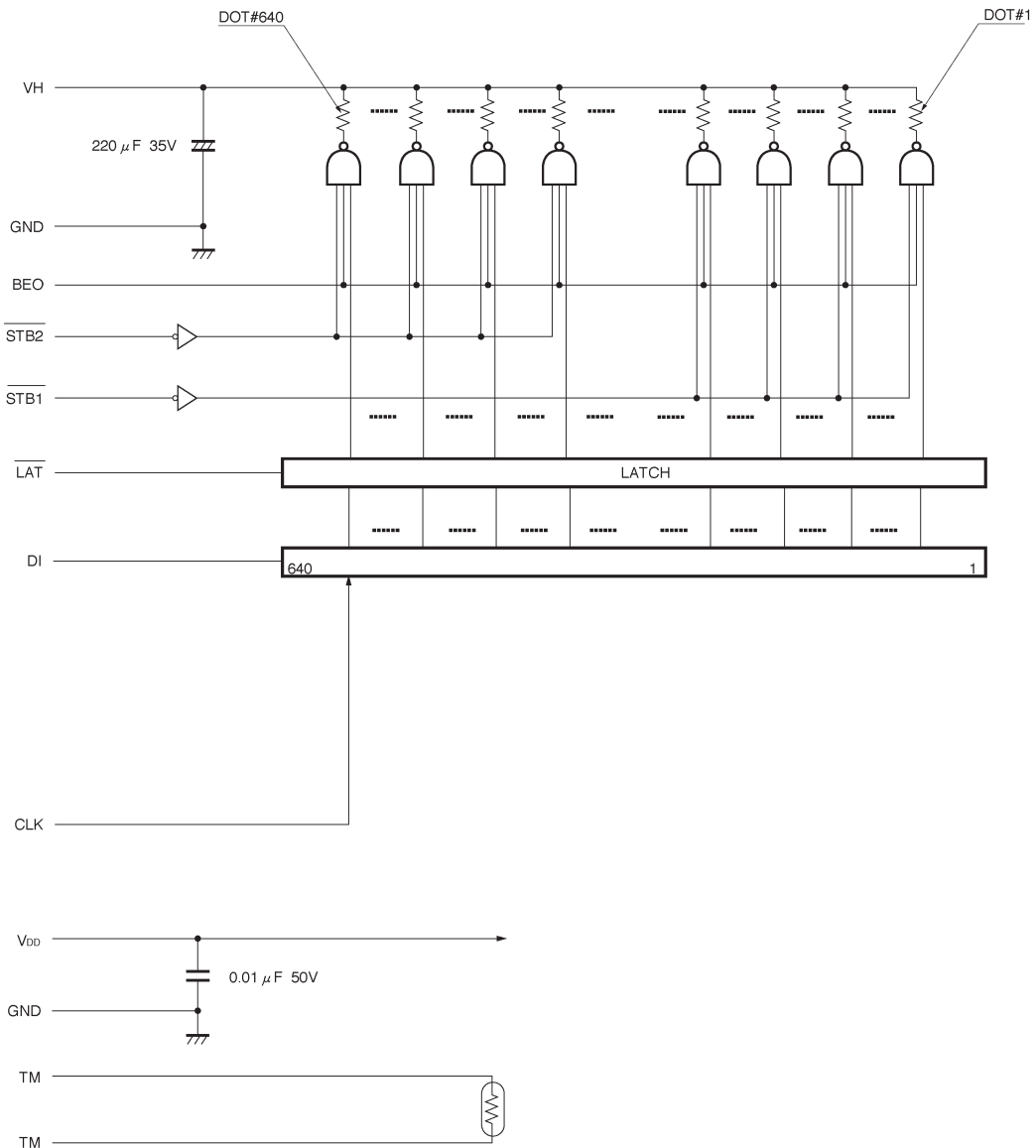


Fig.1

●Equivalent circuit



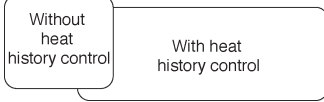
DI No.	DOT No.
DI	640~1

$\overline{\text{STB}}$ No.	DOT No.
$\overline{\text{STB 2}}$	640~321
$\overline{\text{STB 1}}$	320~ 1

Fig. 2

●Supported speeds chart

Inch / second										[IPS]	
0	1	2	3	4	5	6	7	8	9	10	OVER



●Electrical characteristic curves

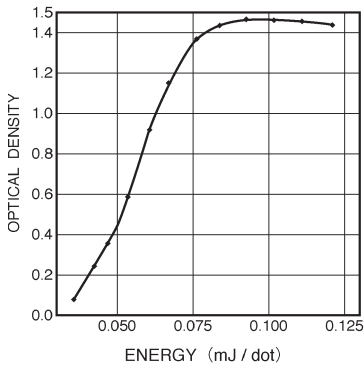


Fig. 3 Representative density curve

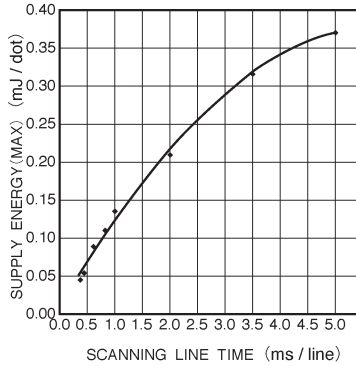


Fig. 4 Maximum energy curve

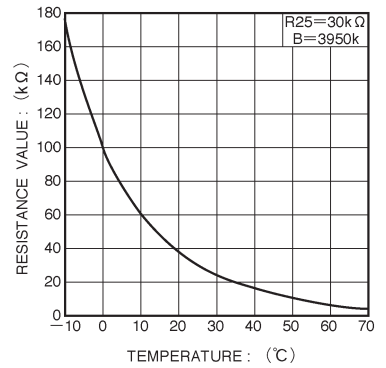


Fig. 5 Thermistor curve