

LA60Q Semiconductor Fuses

600 VAC ■ Very Fast-Acting ■ 5 – 40 Amperes

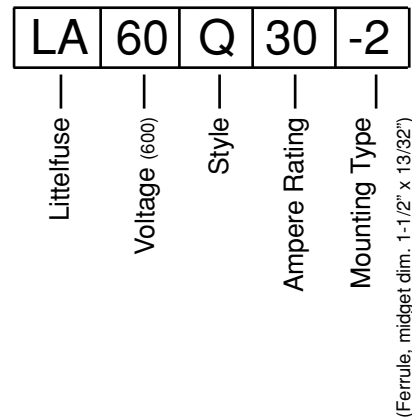
NEW



SPECIFICATIONS

- Voltage Rating:** AC: 600 volts
DC: 600 volts
- Interrupting Rating:** AC: 200,000 Amperes
DC: 100,000 Amperes
- Ampere Range:** 5 – 40 Amperes
- Approvals:** UL Recognized under the components program.

ORDERING INFORMATION



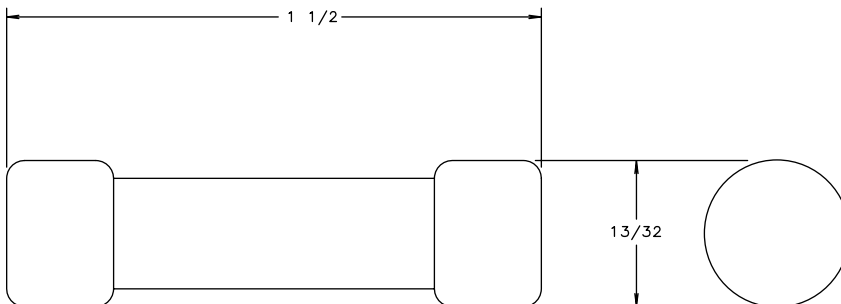
Littelfuse's LA60Q semiconductor protection fuses feature a 600 volt AC/DC rating in a compact size (1-1/2" x 13/32"). LA60Q also has the lowest I²t of all similar fuses and excellent cycling ability. Applications include inverters and small equipment requiring extremely fast response to faults, without the need to carry sustained heavy overloads..

Special Purpose Fuses

FEATURES

- **Lowest I²t** of any fuse this size for greater protection.
- **Excellent cycling ability** gives advantage in equipment design.

DIMENSIONS



Catalog Numbers & Technical Data

Ampere Rating	Littelfuse Catalog Number	Mounting Type	Maximum Clearing I ² t @ 600 VAC (A ² S x 10 ³)	Watts Loss @ Rated Current (W)
5	LA60Q5-2	2	60	0.7
8	LA60Q8-2	2	70	1.1
10	LA60Q10-2	2	110	1.6
12	LA60Q12-2	2	150	2
15	LA60Q15-2	2	180	3
20	LA60Q20-2	2	330	4.4
25	LA60Q25-2	2	440	5.5
30	LA60Q30-2	2	860	5.6
35	LA60Q35-2	2	1300	6.4
40	LA60Q40-2	2	1800	7

Contact Littelfuse for characteristic curves.