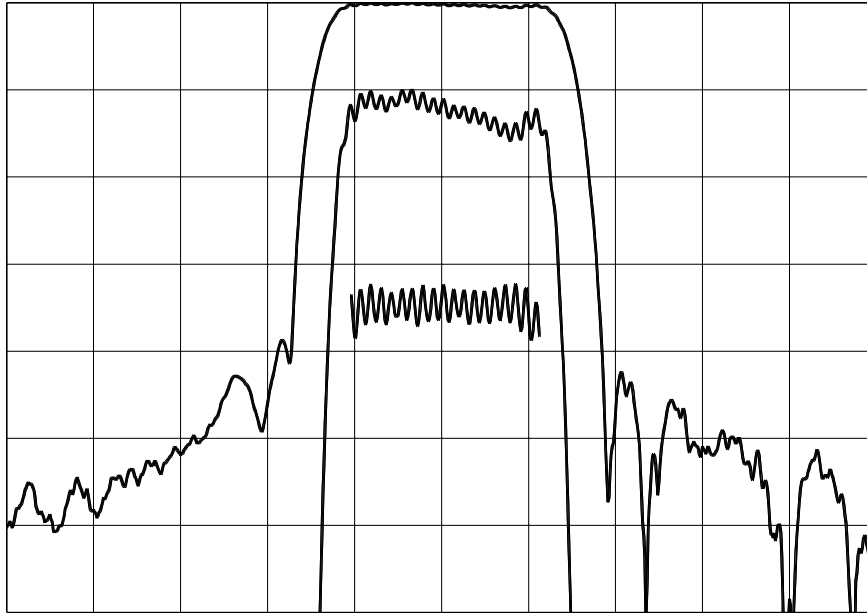


TYPICAL PERFORMANCE



Horizontal: 4.0 MHz/div Vertical (from top): Magnitude 10 dB/div
 Magnitude 1 dB/div
 Group Delay 100 ns/div

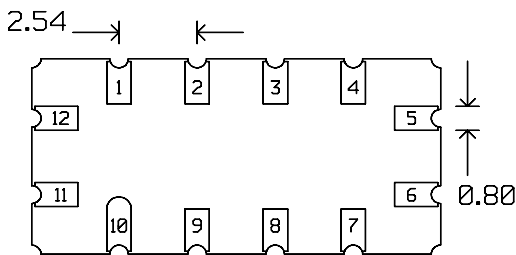
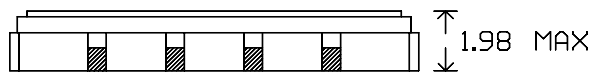
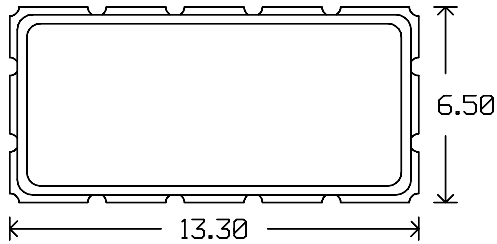
SPECIFICATION

Parameter	Min.	Typ.	Max.	Units.
Center Frequency (Fc) ¹	69.8	70.0	70.2	MHz
Insertion Loss		10.0	11.0	dB
1 dB Bandwidth ²	9.4	9.7		MHz
3 dB Bandwidth ²	10.0	10.8		MHz
40 dB Bandwidth ²		15.0	15.7	MHz
Passband Amplitude Ripple ³		0.6	1	dB p-p
Passband Phase Ripple ³		2.0	11.5	deg p-p
Group Delay Ripple ³		60	95	ns p-p
Absolute Delay		1.05		us
Rejection (20 - 62 MHz)	40			dB
Rejection (78 - 105 MHz)	40			dB
Substrate Material	YZ Lithium Niobate			
Temperature Coefficient		-90		ppm/° C
Ambient Temperature		25		° C

Notes:

1. Mean Value of 3 dB points
2. Relative to Insertion Loss
3. Measured over 80% of 3 dB Bandwidth

PACKAGE OUTLINE

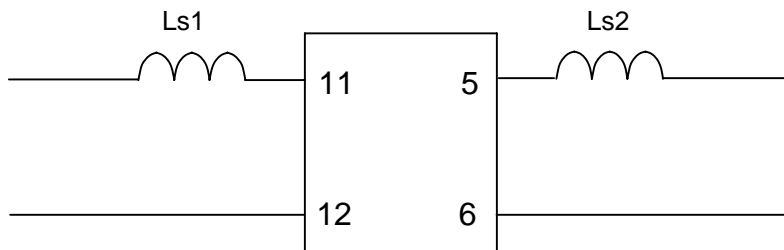


Units: mm

Pin Configuration:

Input:	11
Input Return:	12
Output:	5
Output Return:	6
Ground:	All other pins

MATCHING CIRCUIT



Component values:

$Ls1 = 180 \text{ nH}$ $Ls2 = 180 \text{ nH}$ (Minimum Q = 45)

Notes

1. Recommend use of 5% tolerance components.
2. Optimum values depend on board layout. Values intended as guide only.

ISO 9001
Registered