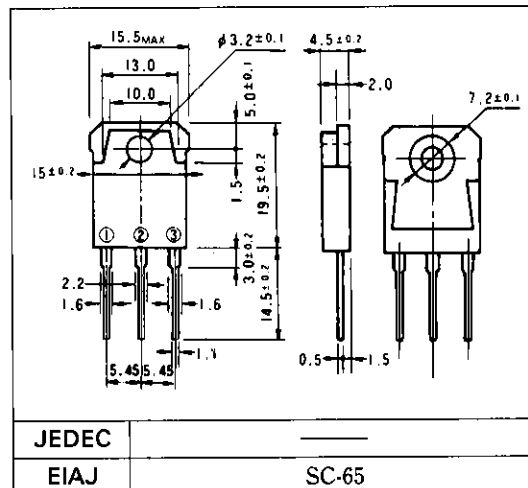


## ショットキーバリアダイオード

### SCHOTTKY BARRIER DIODE

## ■外形寸法：Outline Drawings



## ■特長：Features

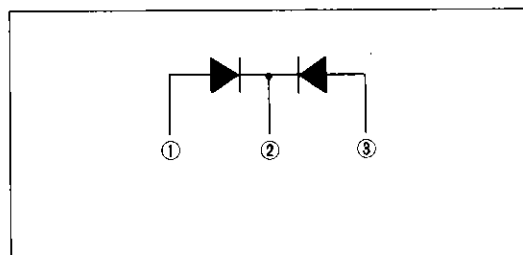
- 低 $V_F$   
Low  $V_F$
- スイッチングスピードが非常に速い  
Super high speed switching.
- プレーナー技術による高信頼性  
High reliability by planer design.

## ■用途：Applications

- 高速電力スイッチング  
High speed power switching.

## ■電極接続

### Connection Diagram



## ■定格と特性：Maximum Ratings and Characteristics

### ●絶対最大定格：Absolute Maximum Ratings

| Items  | Symbols   | Conditions   | Ratings    | Units            |
|--|-----------|--|------------|------------------|
| ピーク繰り返し逆電圧<br>Repetitive Peak Reverse Voltage      | $V_{RRM}$ |  | 40         | V                |
| ピーク非繰り返し逆電圧<br>Non-Repetitive Peak Reverse Voltage | $V_{RSM}$ | $t_w = 500\text{ns}$ duty = 1/10                         | 48         | V                |
| 平均出力電流<br>Average Output Current                   | $I_O$     | 方形波, duty = 1/2, $T_c = 95^\circ\text{C}$<br>Square wave | 20*        | A                |
| サージ電流<br>Surge Current                             | $I_{FSM}$ | 正弦波 Sine Wave<br>10ms                                    | 120        | A                |
| 接合温度<br>Operating Junction Temperature             | $T_j$     |  | -40 ~ +125 | $^\circ\text{C}$ |
| 保存温度<br>Storage Temperature                        | $T_{stg}$ |  | -40 ~ +125 | $^\circ\text{C}$ |

\*センタータップ平均出力電流

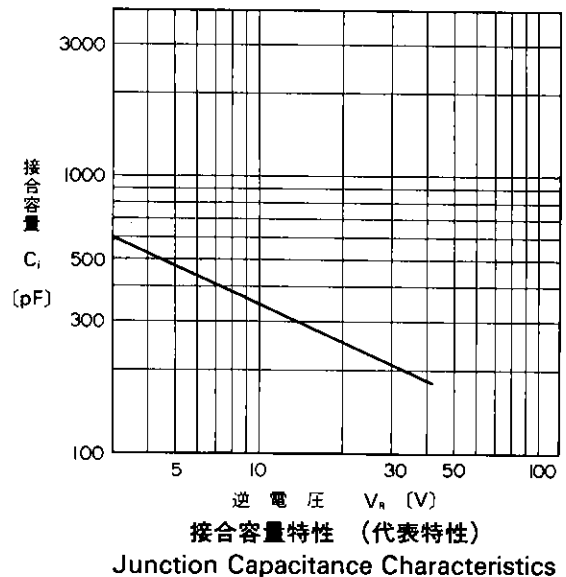
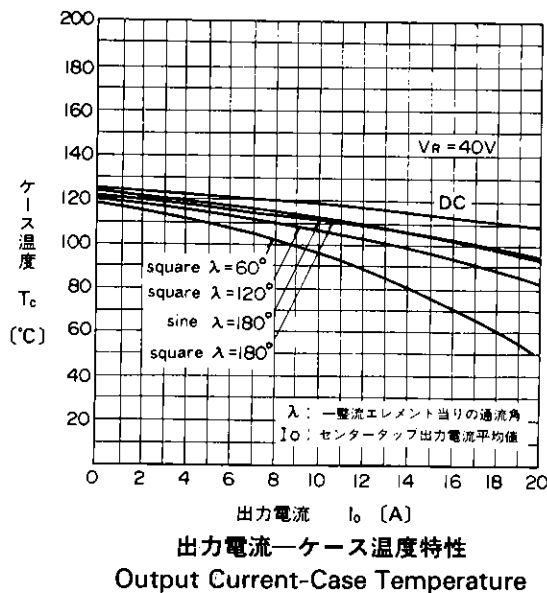
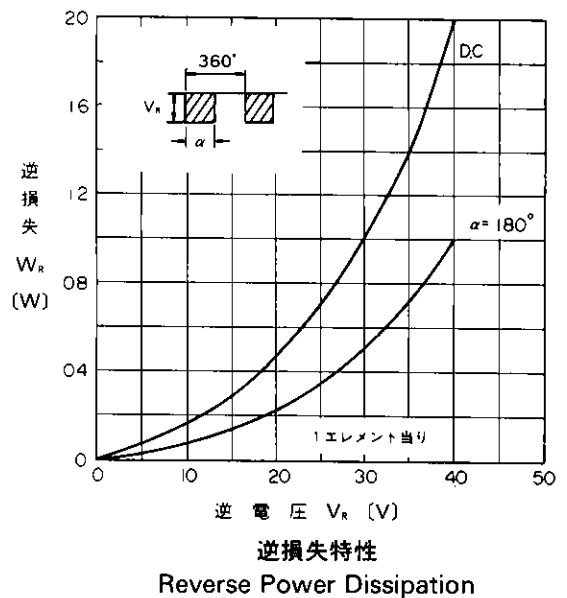
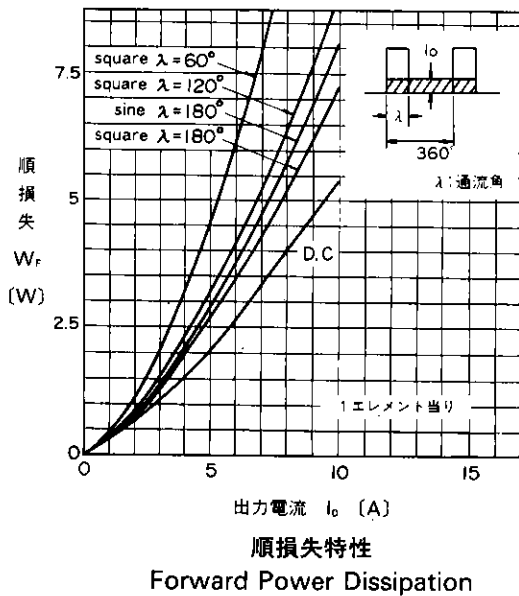
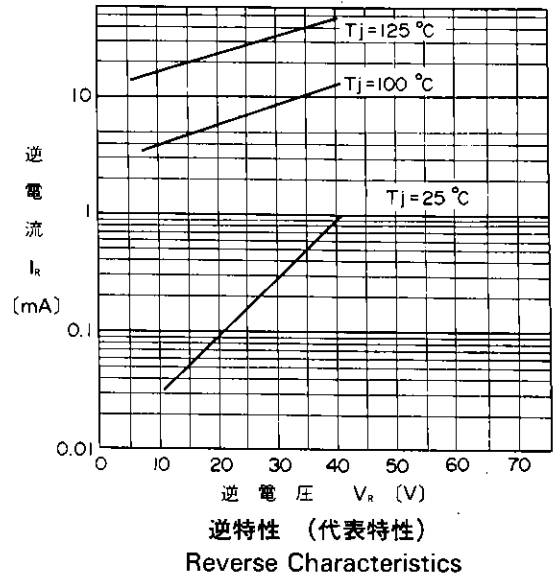
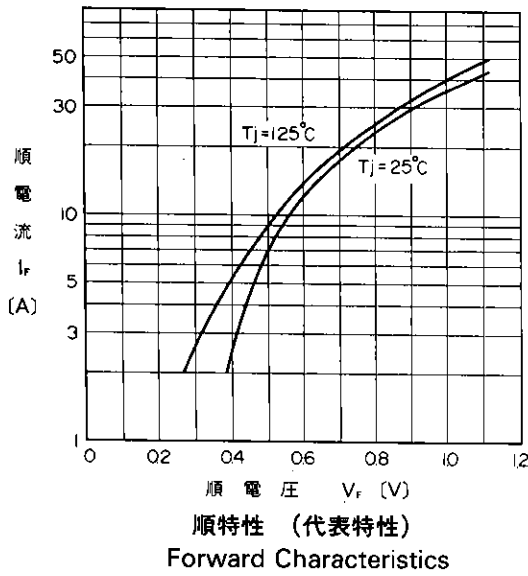
\* average forward current of centertap full wave connection

### ●電気的特性(特に指定がない限り周囲温度 $T_a = 25^\circ\text{C}$ とする)

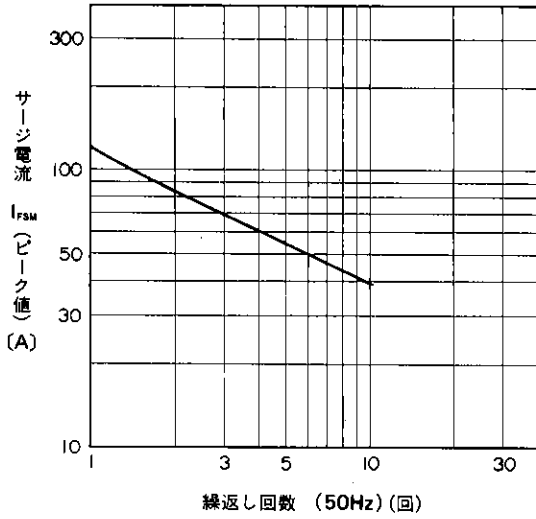
Electrical Characteristics ( $T_a = 25^\circ\text{C}$  Unless otherwise specified)

| Items                       | Symbols       | Conditions                  | Max. | Units              |
|-----------------------------|---------------|-----------------------------|------|--------------------|
| 順電圧<br>Forward Voltage Drop | $V_{FM}$      | $I_{FM} = 8\text{A}$        | 0.55 | V                  |
| 逆電流<br>Reverse Current      | $I_{RRM}$     | $V_R = V_{RRM}$             | 15   | mA                 |
| 熱抵抗<br>Thermal Resistance   | $R_{th(j-c)}$ | 接合・ケース間<br>Junction to case | 1.5  | $^\circ\text{C/W}$ |

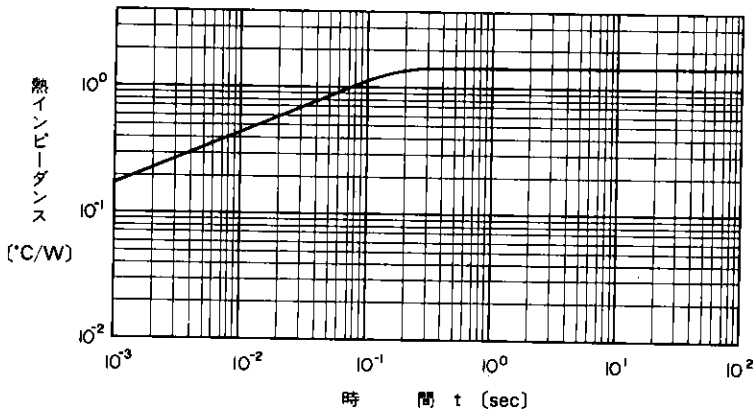
■特性曲線：Characteristics



A



サージ電流耐量  
Surge Capability



過渡熱インピーダンス  
Transient Thermal Impedance

For more information, contact:

**Collmer Semiconductor, Inc.**

P.O. Box 702708

Dallas, TX 75370

972-233-1589

972-233-0481 Fax

<http://www.collmer.com>