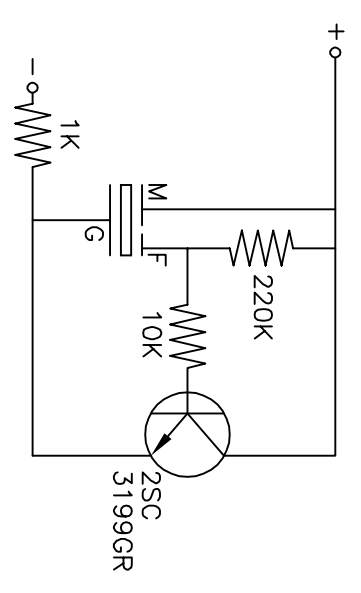


Recommended Driving Circuit for measuring current consumption and sound pressure level.



Test Condition: Temp= $25^{\circ}\text{C} \pm 2^{\circ}\text{C}$ Relative Humidity= $65 \pm 5\%$

No.	Item	Specification
1	Resonant Frequency	3.2 ± 0.5 KHZ
2	Operating Volt. Range	3-28 VDC
3	Current Consumption	Max 7 mA at 12VDC
4	Sound Pressure Level	Min 74 dB at 30cm/12VDC
5	Rated Voltage	12 VDC
6	Operation Temp.	$-30 \sim +85^{\circ}\text{C}$
7	Storage Temp.	$-40 \sim +95^{\circ}\text{C}$
8	Dimension	$\phi 24.0 \times \text{H}10.0$ mm
9	Weight	3.0 grams
10	Material	ABS UL-94 1/16"HB HIGH HEAT (BLACK)
11	Terminal	Pin Type

CUI INC

9615 SW Allen, Suite 103
Beaverton, OR 97005
Phone: (503) 643-4899
800-275-4899
Fax: (503) 372-1266
Website: www.cui.com

Piezo Audio Transducer

PART NO. CEP-1123 UNITS: Millimeters
DRAWN BY: Todd White APPROVED BY: SCALE: None

Tolerance: ± 0.5