

# 2SC3795, 2SC3795A

Silicon NPN triple diffusion planar type

For high breakdown voltage high-speed switching

## Features

- High-speed switching
- High collector to base voltage  $V_{CBO}$
- Low collector to emitter saturation voltage  $V_{CE(sat)}$
- Full-pack package which can be installed to the heat sink with one screw

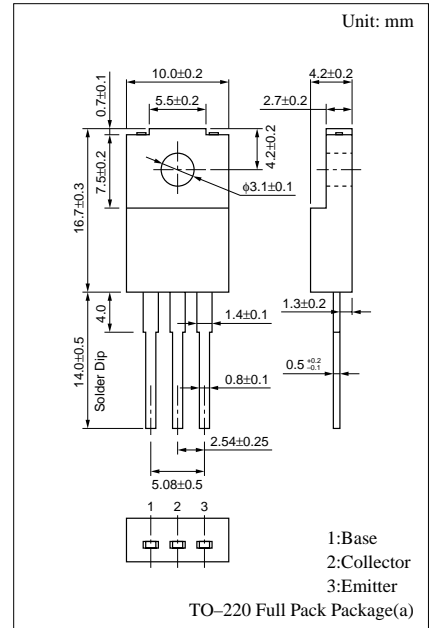
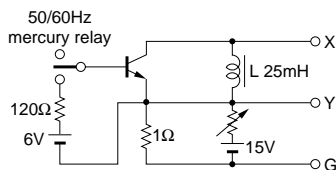
## Absolute Maximum Ratings ( $T_C=25^\circ\text{C}$ )

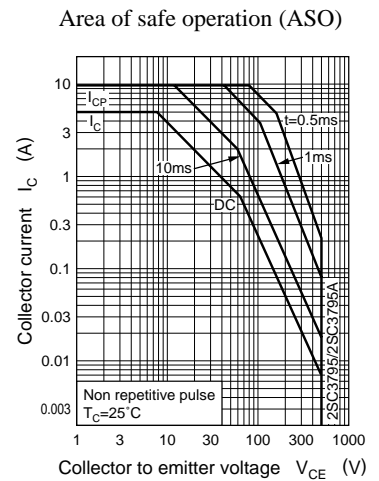
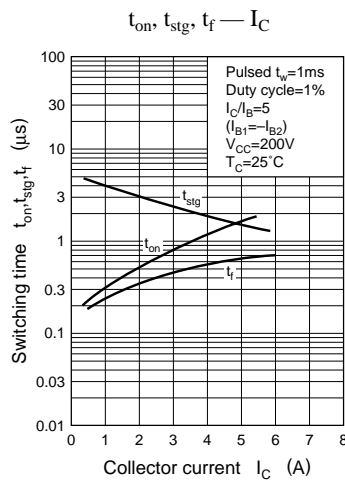
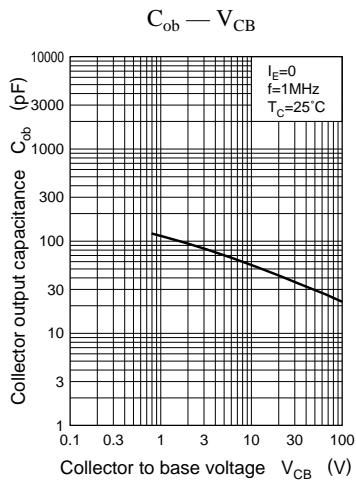
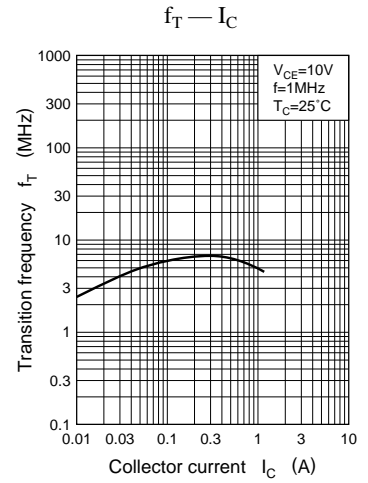
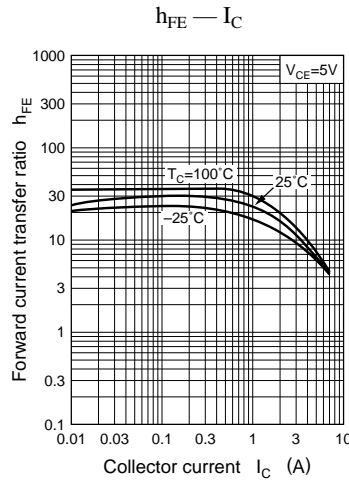
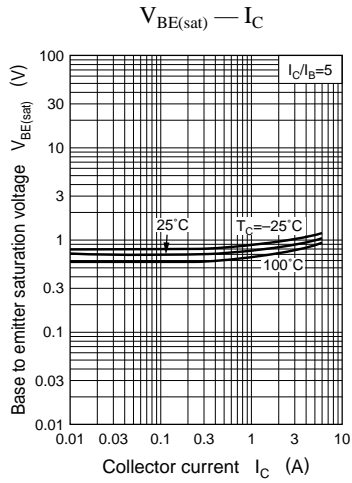
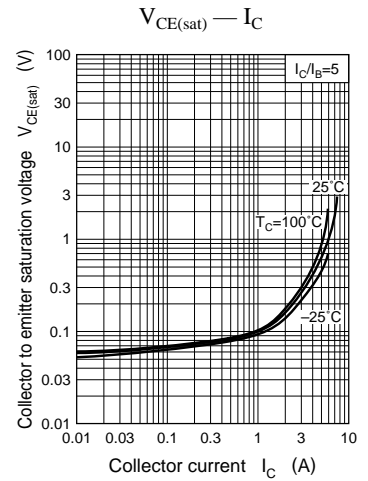
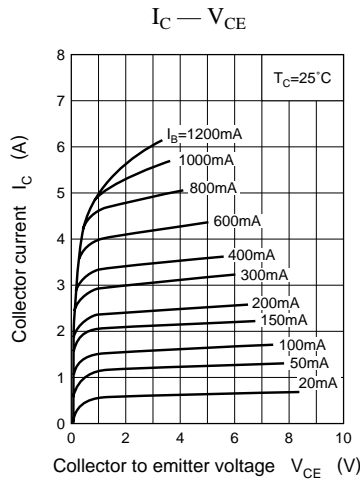
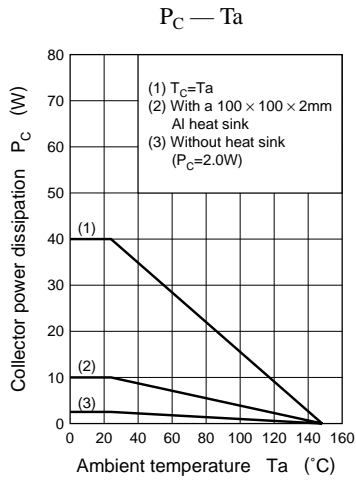
Parameter	Symbol	Rated	Unit	
Collector to base voltage	2SC3795	800	V	
	2SC3795A	900		
Collector to emitter voltage	2SC3795	800	V	
	2SC3795A	900		
Collector to emitter voltage	$V_{CEO}$	500	V	
Emitter to base voltage	$V_{EBO}$	8	V	
Peak collector current	$I_{CP}$	10	A	
Collector current	$I_C$	5	A	
Base current	$I_B$	3	A	
Collector power dissipation	$P_C$	$T_C=25^\circ\text{C}$	40	W
		$T_a=25^\circ\text{C}$	2	
Junction temperature	$T_j$	150	$^\circ\text{C}$	
Storage temperature	$T_{stg}$	-55 to +150	$^\circ\text{C}$	

## Electrical Characteristics ( $T_C=25^\circ\text{C}$ )

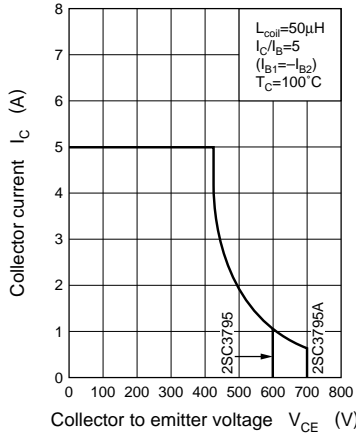
Parameter	Symbol	Conditions	min	typ	max	Unit
Collector cutoff current	2SC3795	$V_{CB} = 800\text{V}, I_E = 0$			100	$\mu\text{A}$
	2SC3795A				100	
Emitter cutoff current	$I_{EBO}$	$V_{EB} = 5\text{V}, I_C = 0$			100	$\mu\text{A}$
Collector to emitter voltage	$V_{CEO(sus)}^*$	$I_C = 0.2\text{A}, L = 25\text{mH}$	500			V
Forward current transfer ratio	$h_{FE1}$	$V_{CE} = 5\text{V}, I_C = 0.1\text{A}$	15			
	$h_{FE2}$	$V_{CE} = 5\text{V}, I_C = 3\text{A}$	8			
Collector to emitter saturation voltage	$V_{CE(sat)}$	$I_C = 3\text{A}, I_B = 0.6\text{A}$			1	V
Base to emitter saturation voltage	$V_{BE(sat)}$	$I_C = 3\text{A}, I_B = 0.6\text{A}$			1.5	V
Transition frequency	$f_T$	$V_{CE} = 10\text{V}, I_C = 0.5\text{A}, f = 1\text{MHz}$		8		MHz
Turn-on time	2SC3795	$I_C = 3\text{A}, I_{B1} = 0.6\text{A}, I_{B2} = -0.6\text{A}, V_{CC} = 200\text{V}$			1	$\mu\text{s}$
	2SC3795A				1.2	
Storage time	$t_{stg}$				3	
Fall time	2SC3795				1	
	2SC3795A	1.2				

\* $V_{CEO(sus)}$  Test circuit

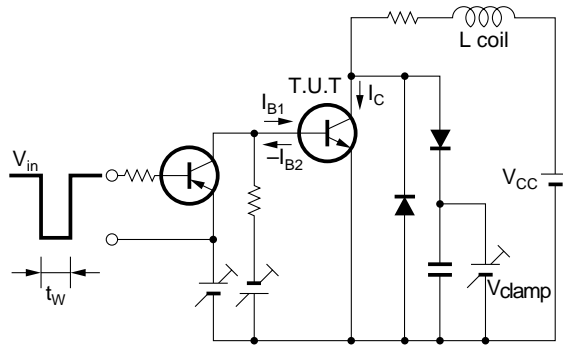




Area of safe operation, reverse bias ASO



Reverse bias ASO measuring circuit



$R_{th(t)} - t$

